



Title	Identification of immuno-inhibitory molecules in Mongolian native cattle and yak
Author(s)	Ochirkhuu, Nyamsuren; Konnai, Satoru; Odbileg, Raadan; Ganbaatar, Otgontuya; Okagawa, Tomohiro; Maekawa, Naoya; Murata, Shiro; Ohashi, Kazuhiko
Citation	Japanese Journal of Veterinary Research, 66(3), 177-192
Issue Date	2018-08
DOI	10.14943/jjvr.66.3.177
Doc URL	http://hdl.handle.net/2115/71338
Type	bulletin (article)
File Information	p177-192 Satoru_Konnai.pdf



[Instructions for use](#)

Identification of immuno-inhibitory molecules in Mongolian native cattle and yak

Nyamsuren Ochirkhoo¹⁾, Satoru Konnai^{1,*)}, Raadan Odbileg²⁾,
Otgontuya Ganbaatar¹⁾, Tomohiro Okagawa¹⁾, Naoya Maekawa¹⁾,
Shiro Murata¹⁾ and Kazuhiko Ohashi¹⁾

¹⁾Department of Disease Control, Graduate School of Veterinary Medicine, Hokkaido University, Sapporo 060-0818, Japan

²⁾Laboratory of Virology, Institute of Veterinary Medicine, Mongolia University of Life Science, Khan-Uul district, Zaisan 17042, Ulaanbaatar, Mongolia

Received for publication, January 12, 2018; accepted, March 24, 2018

Abstract

The immuno-inhibitory molecules PD-1, PD-L1, TIM-3, GAL-9, LAG-3, and CTLA-4 from blood samples of Mongolian native cattle and yak were characterized through cloning and sequencing. As these molecules are involved in cell-mediated immune responses, identifying the differences in their reactions against the pathogens found in bovine species may be beneficial. The amino acid sequences of these molecules were predicted for the purpose of characterizing their functional domains, such as the signal peptide, extracellular domain, transmembrane region, and intracellular domain. Amino acid alignment showed that the sequences of these immuno-inhibitory molecules from Mongolian native cattle and yak were highly homologous to those from other bovine species. As a preliminary application of the genetic information, we conducted expression analysis of PD-L1 in bovine viral diarrhoea virus (BVDV)-infected yak by using real-time polymerase chain reaction, and PD-L1 mRNA expression in peripheral blood mononuclear cells derived from BVDV-infected yak was significantly upregulated compared to that of uninfected-yak. Further studies are necessary to assess whether these molecules play roles in disease progression during chronic infection of Mongolian native cattle and yak.

Key Words: *Immuno-inhibitory molecule, Mongolian native cattle, Mongolian yak.*

Introduction

The maintenance of immune homeostasis is important for host survival, and over-reaction of immune responses to pathogens can result in inflammatory tissue damage¹⁰⁾. Therefore, the balance of immune responses is regulated by co-stimulatory and inhibitory signals¹¹⁾. The

inhibitory signals are mediated by immuno-inhibitory molecules such as programmed cell death 1 (PD-1), programmed cell death-ligand 1 (PD-L1), T-cell immunoglobulin and mucin domain 3 (TIM-3), galectin 9 (GAL-9), lymphocyte activation gene 3 (LAG-3), and cytotoxic T-lymphocyte-associated protein 4 (CTLA-4)³⁰⁾. These immuno-inhibitory molecules are expressed on various

*Corresponding author: Satoru Konnai, Department of Disease Control, Graduate School of Veterinary Medicine, Hokkaido University, Sapporo, Hokkaido 060-0818, Japan
Phone: +81-11-706-5216. Fax: +81-11-706-5217. E-mail: konnai@vetmed.hokudai.ac.jp
doi: 10.14943/jjvr.66.3.177

immune cells and negatively regulate immune function during chronic infection or cancer^{8,15,16}).

PD-1 is a member of the immunoglobulin (Ig) superfamily. This protein has been identified as a cell-surface receptor that interacts with the PD-L1 ligand and can inhibit the function of antigen-specific T cells⁶. PD-1 is mostly expressed on the surface of T cells, but it is also expressed on B cells, natural killer (NK) T cells, activated monocytes, and dendritic cells. In contrast, PD-L1 is constitutively expressed on a variety of cells including T and B cells, dendritic cells, macrophages, mesenchymal stem cells, and bone marrow-derived mast cells²⁴. The PD-1/PD-L1 pathway is involved in the immune dysfunction associated with the development of several tumor types and chronic infections through the transmission of an inhibitory signal that reduces cytokine production and suppresses T cell proliferation^{2,42}.

TIM-3 is a member of the TIM family and has been identified as a transmembrane protein composed of Ig and mucin-like domains¹. TIM-3 is mostly expressed in dysfunctional T cells and negatively regulates the immune responses occurring during chronic infection and the development of cancer¹². Therefore, it contains an intracellular tyrosine-kinase phosphorylation motif, which is a critical mediator of intracellular signaling and of intracellular responses to extracellular signaling^{28,34}.

GAL-9, a member of the galectin family (also called S-type lectins), is secreted by several cells and has been identified as the ligand for TIM-3⁵¹. GAL-9 consists of N- and C-terminal carbohydrate-binding domains connected by a link peptide and binds to TIM-3 *via* a carbohydrate chain^{47,51}. GAL-9-induced intracellular calcium flux, aggregation, inhibition of cell proliferation and cytokine production, and T cell death are known to be TIM-3-dependent^{18,41}. Therefore, the TIM-3/GAL-9 pathway is closely associated with immune exhaustion and disease progression in organisms experiencing chronic infections and tumors^{4,44}.

CTLA-4 and LAG-3 are members of the Ig

superfamily and have been identified as membrane proteins^{14,48}. CTLA-4 is expressed on activated effector cells and regulatory T cells that bind to CD80 (B7-1)/CD86 (B7-2) molecules of antigen-presenting cells, while LAG-3 is expressed on various immune cells, such as T lymphocytes, NK cells, eosinophils, monocytes, and dendritic cells^{49,50}. LAG-3 has 4 extracellular Ig-like domains, with conserved structural similarities between domains 1 and 3, as well as between domains 2 and 4²¹. CTLA-4 and LAG-3 play a role in the down-regulation of immune responses during the progression of chronic diseases and in facilitating immune evasion by several pathogens that cause chronic infections and tumors^{16,23,26}.

Mongolians have practiced animal husbandry for a long time. Mongolian livestock graze in free-range pastures, which is associated with a high risk of exposure to infectious agents transmitted by wildlife. In our previous field surveys, several pathogens were detected in Mongolian livestock, but none of the animals showed visible clinical signs of infection by the pathogens detected, which included bovine viral diarrhea virus (BVDV), bovine leukemia virus, *Mycobacterium avium* subsp. *paratuberculosis*, bovine gammaherpesvirus-2, and *Anaplasma ovis*³⁵⁻³⁹. However, there is no detailed information on the role of immunoinhibitory molecules during disease progression for Mongolian native animals. Thus, molecular identification of PD-1, PD-L1, TIM-3, GAL-9, LAG-3, and CTLA-4 from Mongolian native cattle and yak was performed through cloning and sequencing analysis in this study.

Materials and Methods

Sample collection and RNA extraction: A total of 108 blood samples, including 68 samples from yak (in Tsenkhersoum of Arkhangai province) and 40 samples from Mongolian native cattle (in Lunsoum of Tuv province), were collected in 2014 for RNA extraction. The RNA was isolated from whole blood by using TRIzol[®] reagent (Thermo

Table 1. Primer sets for detection and characterization of immunoinhibitory molecules in Mongolian native cattle and yak

Gene	Product size bp	Primers (5'-3')	Reference
PD-1	894	513 Forward: ATGGGGACCCCGCGGGCGCT Reverse: GATGACCAGGCTCTGCATCT	Mingala <i>et al.</i> , (2011)
		504 Forward: AATGACAGCGGGCTACTT Reverse: TCAGAGGGGCCAGGAGCAGT	
PD-L1	870	Forward: CGGCAGGTCATTCCAGAAA Reverse: CCAAACCACAGGCTGAGAA	This study
CTLA-4	666	Forward: ATGGCTTGCTCTGGATTCCA Reverse: TCAATTGATGGGAATAAAATAAGGC	Mingala <i>et al.</i> , (2011)
GAL-9	972	Forward: GGGAGAAGTGGCAGTGGCTACAGA Reverse: ATCCAGATAGCAGCACAGGGCAG	Okagawa <i>et al.</i> , (2012)
LAG-3	1551	1031 Forward: CCTGATCTGTCTGGCTTTCC Reverse: GAGAAGACTGGATCCCCACA	This study
		773 Forward: TGTGGGGATCCAGTCTTCTC Reverse: AGCTGAGGAGATGAGGATGG	
TIM-3	843	Forward: AAACGGCACCTAAACAGAGC Reverse: GACAACACCAAGCCCCTAGA	Okagawa <i>et al.</i> , (2012)

Fisher Scientific, Waltham, MA, USA) according to the manufacturer's instructions. The RNA samples were then stored at -80°C until analysis was performed.

Complementary DNA (cDNA) synthesis: The cDNA synthesis was performed using a cDNA synthesis kit (Takara Bio Inc., Otsu, Shiga, Japan) following the manufacturer's instructions. After cDNA synthesis, the housekeeping gene was confirmed using a primer set for the β -actin gene: forward 5'-TCT TCC AGC CTT CCT TCC TG-3' and reverse 5'-ACC GTG TTG GCG TAG AGG TC-3'⁴⁰. Only samples positive for the β -actin gene were subjected to polymerase chain reaction (PCR) for amplification of each immunoinhibitory molecule.

PCR amplification for immuno-inhibitory molecules: A total of 18 representative samples (3 samples for each molecule) were selected for the amplification of PD-1, PD-L1, TIM-3, GAL-9, LAG-3, and CTLA-4 molecules. The primer sets used for immuno-inhibitory molecule amplification are shown in Table 1. In the PCR reaction, 5 μl of a single cDNA sample was added to 45 μl of the

reaction mixture, which comprised 5 μl of $\times 10$ Ex Taq buffer (Takara Bio Inc.), 4 μl of deoxynucleotide solution (Takara Bio Inc.), 4 μl (10 μM concentration) of forward and reverse primers (Hokkaido System Science Company, Japan), 10 μl of 5 M betaine, 0.25 μl of Ex Taq polymerase (Takara Bio Inc.), and 17.75 μl of deuterium-depleted water. PCR amplification was performed under the following thermal cycle conditions: initial denaturation at 94°C for 5 min, followed by 40 cycles of denaturation at 94°C for 30 sec, annealing at the optimal temperature for 30 sec, extension at 72°C for 1 min, and a final synthesis at 72°C for 7 min, using the GeneAmp PCR System 9700 (Applied Biosystems, USA). The amplified PCR products were separated by electrophoresis and visualized under ultraviolet light.

DNA cloning and sequencing: A total of 18 PCR products (3 samples for each molecule) were extracted for sequencing by using the FastGene gel/PCR Extraction kit (Nippon Genetics Company, Japan). The extracted PCR products were ligated into the pGEM-T Easy vector (Promega Corporation, USA), and the plasmid

was transformed into the DH5a *Escherichia coli* strain, plated on a Luria-Bertani (LB) agar (Thermo Fisher Scientific, USA), and cultured in LB broth (Thermo Fisher Scientific, USA). Plasmid DNAs from the positive clones were extracted from the LB culture by using the FastGene Plasmid Mini kit (Nippon Genetics Company). The plasmids were amplified using the GeneAmp PCR System 9700 (Thermo Fisher Scientific, USA). The quality of the plasmid preparation for each gene of the bacterium was verified using NanoDrop 8000 analytic equipment (Thermo Fisher Scientific, USA), and sequencing analysis for the bacterium was carried out using the CEQ8000 DNA analysis system (Beckman Coulter Inc Company, USA).

Homology analyses: The obtained sequences were analyzed using the Bio-Edit software and basic local alignment search tool application. In addition, the signalP 4.1 server (Technical University of Denmark [DTU], Copenhagen, Denmark), TMHMM server version 2.0 (DTU), and NetNGlyc 1.0 server (DTU) were used to predict the cleavage sites, transmembrane helices, and possible N-linked glycosylation sites, respectively, in the deduced protein sequences of the PD-1, PD-L1, TIM-3, GAL-9, LAG-3, and CTLA-4 genes.

Real-time PCR: To evaluate *PD-L1* mRNA expression in response to infectious diseases, expression analysis was conducted for yak diagnosed with BVDV infection³⁷. Total RNA was extracted from fresh peripheral blood mononuclear cells (PBMCs) by using TRIzol[®] reagent, and cDNA was synthesized as described above. Quantitative real-time PCR for *PD-L1* mRNA was performed in the LightCycler 480 System II (Roche Diagnostics, Mannheim, Germany) using SYBR Premix Dimer Eraser (Takara Bio Inc.) following the manufacturer's instructions. The primers used were 5'-GGG GGT TTA CTG TTG CTT GA-3' and 5'-GCC ACC TCA GGA CTT GGT G AT-3' for *yak PD-L1* and 5'-CGC ACC ACT

GGC ATT GTC AT-3' and 5'-TCC AAG GCG ACG TAG CAG AG-3' for *bovine actin*. The cycling conditions consisted of initial template denaturing at 95°C for 30 s, followed by amplification of the template for 45 cycles of 95°C for 5 s, 55°C (*PD-L1*) or 60°C (*actin*) for 30 s, and 72°C for 30 s. A final melting curve analysis was performed from 65°C to 95°C at a rate of 0.1°C/s (continuous acquisition), with a final cooling to 40°C over 10 s. Each amplification procedure was performed in triplicate, and the values for *PD-L1* mRNA expression were expressed as a ratio obtained by dividing the concentration of *PD-L1* mRNA by that of *actin* mRNA. Data were analyzed by one-way analysis of variance followed by the Student's *t* test. Differences between groups were considered significant if probability values (*P*) < 0.05 were obtained.

Results

Amino acid (aa) alignments of the immuno-inhibitory molecules

In total, full-length of 6 immuno-inhibitory protein genes were cloned and identified from both Mongolian native cattle and yak (Fig. 1-6). The lengths of amplified proteins were 843 bp encoding 280 aa for TIM-3, 972 bp encoding 323 aa for GAL-9, 1551 bp encoding 516 aa for LAG-3, 666 bp encoding 221 aa for CTLA-4, 849 bp encoding 282 aa for PD-1, and 870 bp encoding 298 aa sequences for PD-L1.

The identities of the amino acid sequences were 71.6%–100% and 72.8%–99.6% for PD-1, 82.5%–100% and 82.9%–99.7% for PD-L1, 73.4%–100% and 72.0%–96.5% for TIM-3, 94.1%–100% and 94.1%–100% for GAL-9, 80.2%–99.6% and 70.8%–99.4% for LAG-3, and 95.9%–100% and 95.9%–99.5% for CTLA-4 from Mongolian native cattle and yak, respectively, compared to the corresponding sequences from other animal species.

Prediction for structure of the immuno-inhibitory molecules

The amino acid sequences of the immuno-inhibitory molecules from Mongolian native cattle and yak were passed through the protein-structure prediction server at the Center for Biological Sequence Analysis at DTU.

According to the predictions, the amino acid residues of PD-1 at positions 1–20, 21–170, 171–191, and 192–282 corresponded to the signal peptide, extracellular domain, transmembrane region, and intracellular domain, respectively (Fig. 1). Additionally, the amino acid residues of PD-L1 at positions 1–24, 25–238, 239–259, and 260–289 corresponded to the signal peptide, extracellular domain containing IgV and IgC domains, transmembrane region, and intracellular domain, respectively (Fig. 2). The amino acid residues of TIM-3 at positions 1–23, 24–191, 192–214, and 215–280 were found to correspond to the signal peptide, extracellular domain containing Ig and mucin domains, transmembrane region, and intracellular domain, respectively (Fig. 3). The amino acid residues of GAL-9 at positions 1–148, 149–197, and 198–323 were found to correspond to the N-terminal carbohydrate-recognition domain, a linker peptide, and the C-terminal carbohydrate-recognition domain, respectively (Fig. 4).

The amino acid residues of LAG-3 at positions 1–23, 24–433, 434–456, and 457–516 were found to correspond to the signal peptide, the extracellular domain containing 4 regions characterized as domains 1–4, the transmembrane domain, and the intracellular domain, respectively (Fig. 5). Finally, the amino acid residues of CTLA-4 at position 1–35, 36–161, 162–182, and 185–221 were found to correspond to the signal peptide, extracellular domain, transmembrane region, and intracellular domain, respectively (Fig. 6).

Predicted functional domains and motifs of the immuno-inhibitory molecules

All cysteine residues evaluated for both

Mongolian native cattle and yak, specifically 4 aa for GAL-9, 6 aa for PD-1, 8 aa for TIM-3, LAG-3, and CTLA-4, and 10 aa for PD-L1, were intact in their respective locations with the exception of 1 aa substitution at position 9 in TIM-3 for yak (Y). The potential N-linked glycosylation sites in all immuno-inhibitory molecules were entire such as, 2 aa for TIM-3, 1 aa for GAL-9, 2 aa for LAG-3, 3 aa for CTLA-4, 1 aa for PD-1, and 3 aa for PD-L1. A potential tyrosine-kinase phosphorylation motif (HPVENIY) was conserved in the intracellular domain of TIM-3 for all bovine species. In addition, a possible cleavage site for metalloproteases at position 404–413 with 10 aa and an immuno-inhibitory motif at position 473–478 with 6 aa containing “KTGELE” were found for LAG-3.

Amino acid substitutions in the immuno-inhibitory molecules

Amino acid alignment showed that immuno-inhibitory molecules among bovine species were highly homologous to one another. There was no amino acid substitution in PD-1, PD-L1, GAL-9, and CTLA-4 from Mongolian native cattle compared to the Holstein and Hereford breeds of cattle. For TIM-3 of Mongolian native cattle, 3 aa substitutions (1 for the extracellular domain and 2 for the intracellular domain) and no amino acid substitutions were found compared to those of Holstein and Hereford breeds of cattle, respectively. In addition, 2 aa substitutions (1 for the extracellular domain and 1 for the intracellular domain) were found in the amino acid residues of LAG-3 for Mongolian native cattle compared to those for Holstein and Hereford breeds of cattle.

Amino acid alignment of the immuno-inhibitory molecules from yak and cattle revealed 8 aa substitutions (one for the signal peptide, four for the extracellular domain, one for the transmembrane region, and two for the intracellular domain) for TIM-3, 2 aa substitutions for LAG-3 (both for the extracellular domain), 1 aa substitution for the intracellular domain of

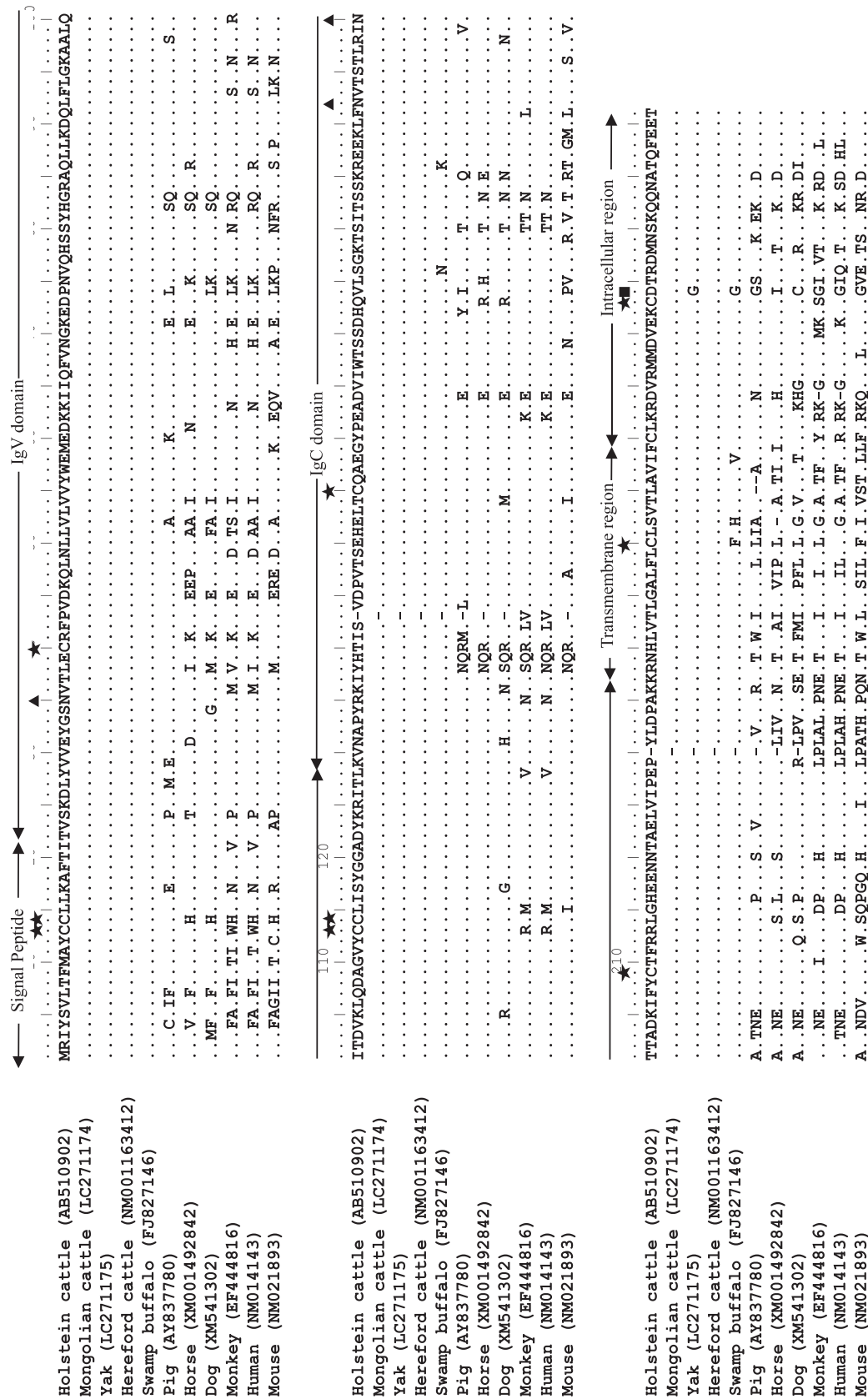


Fig. 2. Alignment of deduced amino acid sequences of PD-L1 from Mongolian native cattle and yak compared to other species. A solid star indicates a cysteine residue, and a solid square indicates a potential N-linked glycosylation site. A solid triangle indicates an amino acid difference between yak and cattle species.

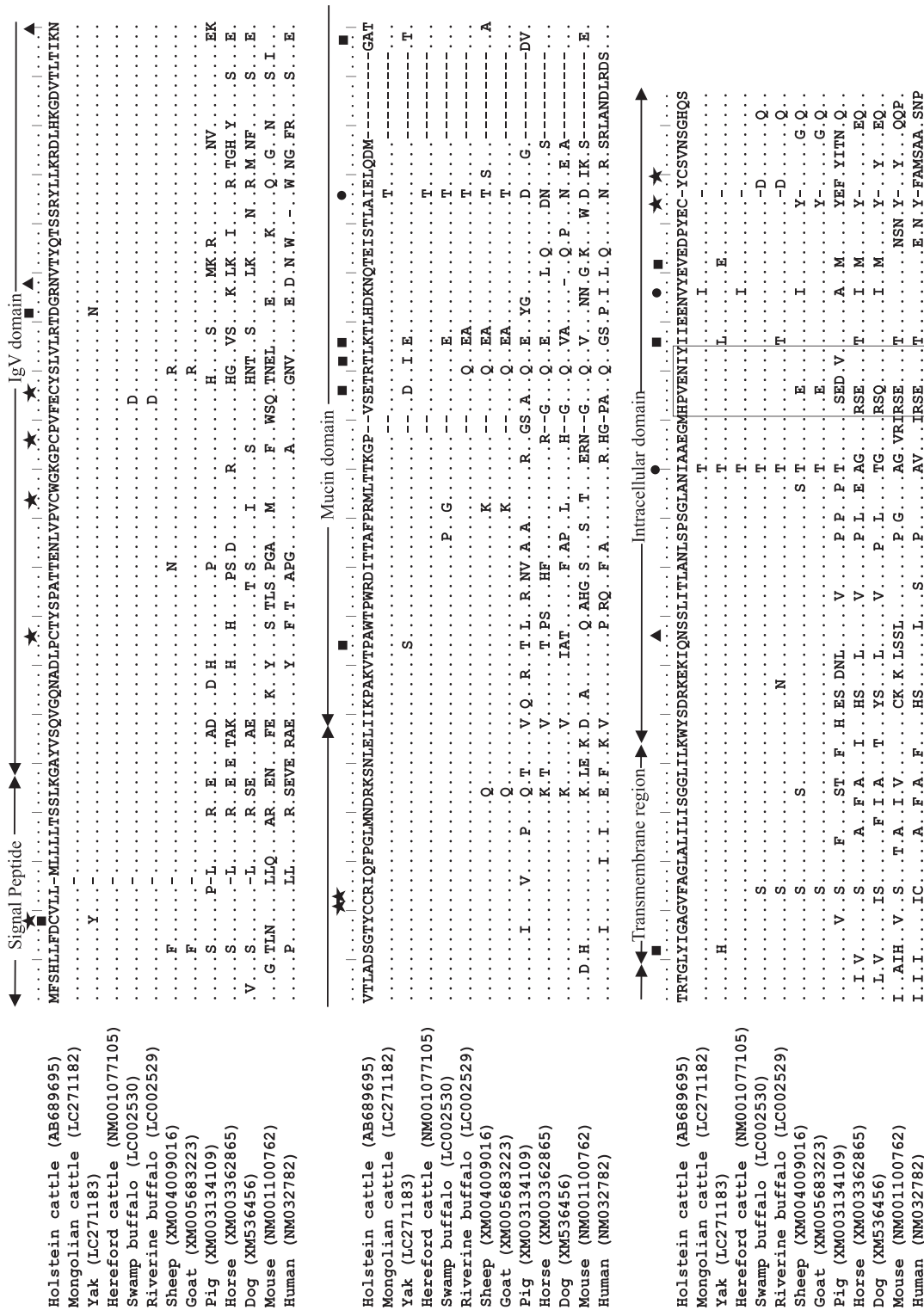


Fig. 3. Alignment of deduced amino acid sequences of TIM-3 from Mongolian native cattle and yak compared to other species. A solid star indicates a cysteine residue, and a solid triangle indicates a potential N-linked glycosylation site. A solid square indicates an amino acid difference between yak and cattle species. A solid circle indicates an amino acid substitution between Mongolian native cattle and other cattle species. The tyrosine-kinase phosphorylation motif is enclosed in a box.

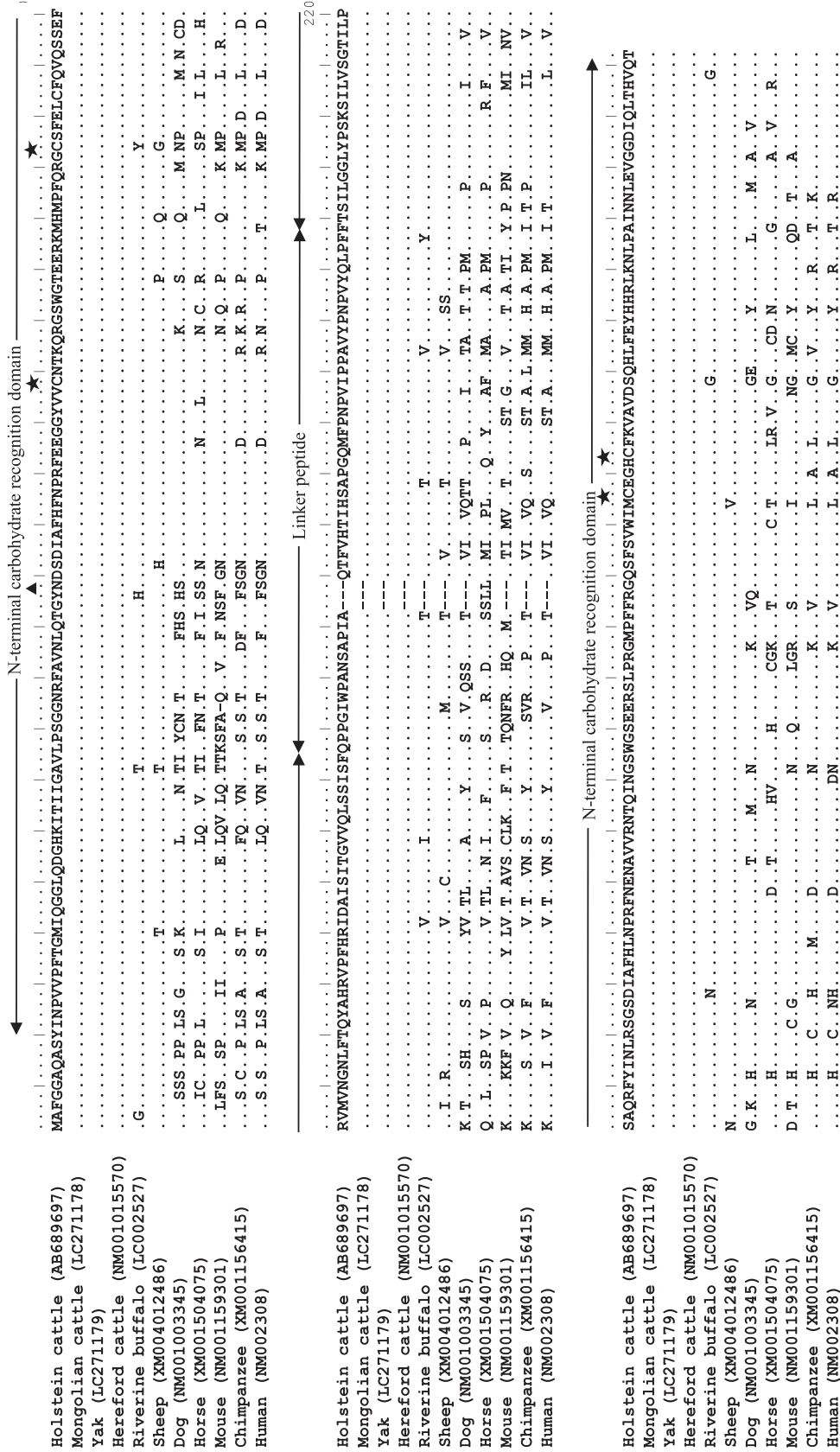


Fig. 4. Alignment of deduced amino acid sequences of GAL-9 from Mongolian native cattle and yak compared to other species. A solid star indicates a cysteine residue, and a solid triangle indicates a potential N-linked glycosylation site.

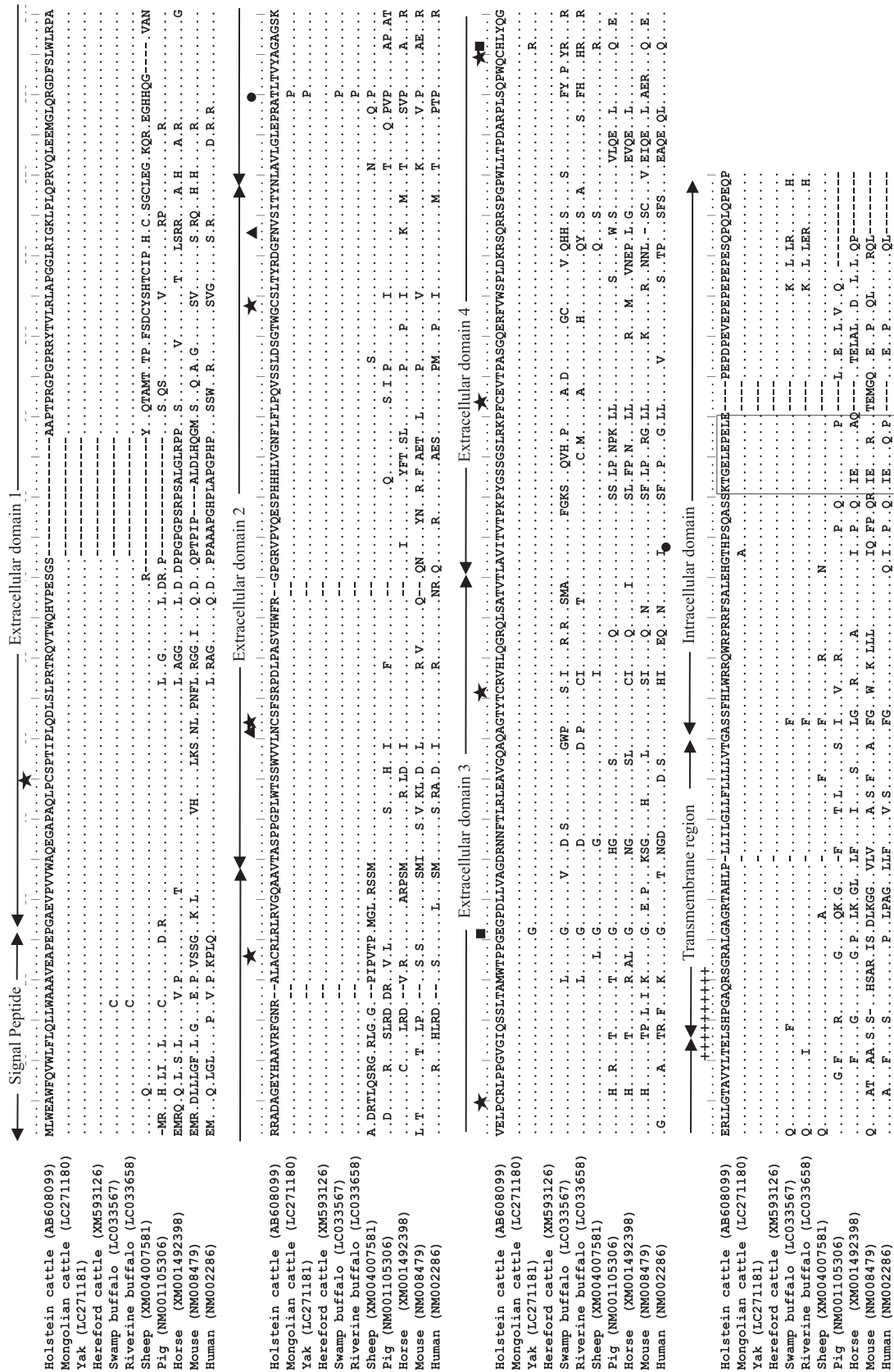


Fig. 5. Alignment of deduced amino acid sequences of LAG-3 from Mongolian native cattle and yak compared to other species. A solid star indicates a cysteine residue, and a solid square indicates an amino acid difference between yak and cattle species. A solid circle indicates an amino acid substitution between Mongolian native cattle and other cattle species. The amino acid residues at positions 404–413, indicated by a plus (+), are possible cleavage sites for metalloproteases. Enclosed in the box is the KTGELE inhibitory motif. A solid triangle indicates a potential N-linked glycosylation site.

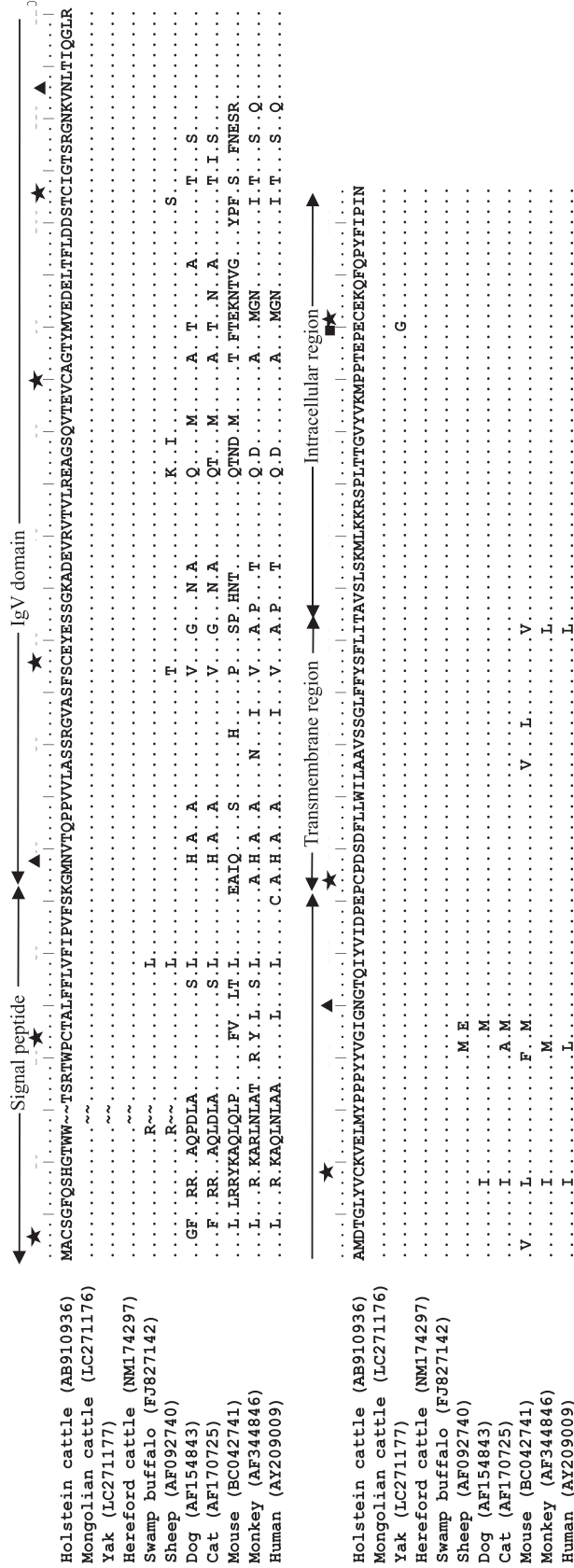


Fig. 6. Alignment of deduced amino acid sequences of CTLA-4 from Mongolian native cattle and yak compared to other species. A solid star indicates a cysteine residue, and a solid triangle indicates a potential N-linked glycosylation site. A solid square indicates an amino acid difference between yak and cattle species.

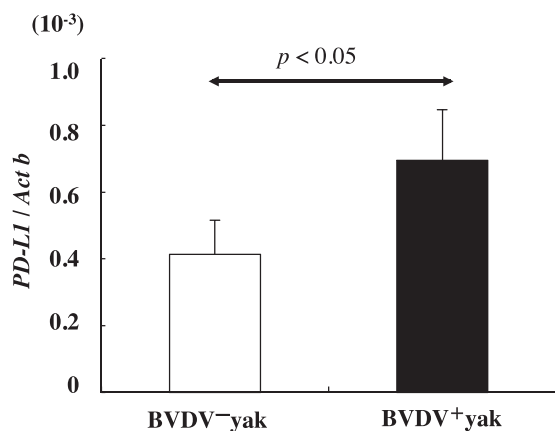


Fig. 7. Analysis of *PD-L1* mRNA expression by quantitative real-time PCR. *PD-L1* mRNA expression was determined in leukocytes from BVDV-infected and uninfected yak. The degree of *PD-L1* mRNA expression is shown as the ratio of the concentration of the PCR products from *PD-L1* mRNA to those from β -actin mRNA.

CTLA-4, 1 aa substitution for the extracellular domain of PD-1, and 1 aa substitution for the intracellular domain of PD-L1.

Expression analysis of PD-L1 in BVDV-infected yak

For preliminary application of the genetic information, we examined the PD-L1 mRNA expression levels in leukocytes freshly isolated from BVDV-infected and uninfected yak. Only a limited number of yaks were available for testing. As shown in Fig. 7, PD-L1 expression levels for the infected animals were statistically significantly higher than those for the control yak.

Discussion

Molecular characterization of the immuno-inhibitory molecules PD-1, PD-L1, TIM-3, GAL-9, LAG-3, and CTLA-4 from Mongolian native cattle and yak was performed in this study. The obtained sequences were compared to the corresponding sequences of various animal species including cattle, buffalo, sheep, dog, pig, and mouse. The amino acid sequences of the immuno-inhibitory molecules from the tested

animals showed high homologies to those of bovine species, indicating a close relationship between members of the species. The analyzed genes, with the exception of GAL-9, were predicted to encode signal peptides, extracellular domains, transmembrane regions, and intracellular domains. GAL-9 was structurally different and was predicted to consist of N- and C-terminal carbohydrate-binding domains connected by a link peptide, because GAL-9 is a soluble molecule secreted by several cells and was originally characterized as an eosinophil chemoattractant²⁹.

Cysteine residues are important for protein stability and function, because they are often involved in disulfide bonds that stabilize the protein structure, as well as in binding metallic ions for function³³. The cysteine residues in the analyzed genes were almost all conserved in their respective locations for all bovine species. However, single amino acid substitutions were found in TIM-3 from yak, GAL-9 and LAG-3 from riverine-type buffalo, PD-1 from both swamp- and riverine-type buffalo, and PD-L1 from swamp-type buffalo. In total, 2 substitutions were found only in LAG-3 from swamp-type buffalo.

N-linked glycosylation sites also play an essential role in folding and quality control for proteins in the endoplasmic reticulum, and a tightly controlled biosynthetic pathway ensures the correct assembly of the glycan^{9,20}. Numerous diseases associated with defects in the N-glycosylation pathway highlight its importance in humans^{17,19}. Potential N-linked glycosylation sites were found in the amino acid sequences of the immuno-inhibitory molecules identified from Mongolian native cattle and yak, 1 for GAL-9 and PD-1, 2 for TIM-3 and LAG-3, and 3 for CTLA-4 and PD-L1, and were all intact in their respective locations.

The tyrosine-kinase phosphorylation motif (HPVENIY) in the predicted intracellular domain of TIM-3 for Mongolian native cattle and yak was identical to those of other bovine species. In general, the motif for tyrosine-kinase phosphorylation transduces signals through the

phosphorylated tyrosine, by acting as a functional receptor in many important physiological processes including cellular growth, differentiation, and intracellular signaling^{25,29,34,45}). The inhibitory motif in the cytoplasmic region (KTGELE/KIEELE) of LAG-3 was conserved for both Mongolian native cattle and yak. This inhibitory motif is known to mediate intracellular signal transduction by down-regulating T cell expansion²²).

Alignment of the deduced amino acid sequences revealed 1 aa substitution for CTLA-4, PD-1, and PD-L1, 2 aa substitutions for LAG-3, and 8 aa substitutions for TIM-3 between the yak and cattle sequences, but no substitution for GAL-9. Immuno-inhibitory molecules and their ligands play a crucial role in the immune system, because they can inhibit communication between adjacent and distant cells, a mechanism that can facilitate disease progression during infection^{6,15,40}). Amino acid substitutions in these immuno-inhibitory molecules may alter their functions, but it remains to be determined whether the substitutions observed are functionally important.

Recent studies showed that over-expression of immuno-inhibitory molecules leads to immune dysfunction during chronic infections in animals and humans^{12,23,26,40,42,44}). However, there are no reports available on the role of these molecules in disease progression in yak. Thus, the expression level of PD-L1 for yak during natural BVDV infection was investigated using quantitative real-time PCR to obtain preliminary insights into the influence of PD-L1. BVDV has the ability to cause persistent infection in cattle, due to the involvement of immuno-regulatory host factors, including the expression of cytokines, but the exact mechanism of disease progression in infected animals is not well understood^{3,7,31}). Although the expression levels of other immuno-inhibitory molecules for yak were not investigated, because the number of BVDV-positive samples from yak was limited, the expression level of PD-L1 for BVDV-infected yak was higher than those of BVDV-uninfected control yak. According to

established reports, the negative regulatory PD-1/PD-L1 pathway has been implicated in the induction of effector lymphocyte exhaustion during chronic viral infection, such as infection with HIV, SIV, LCMV, and HTLV-1^{5,13,27,43,46}). These data might suggest that PD-L1 is involved in the inhibition of T cell function or immunological tolerance during BVDV infection. Further studies are necessary to determine the roles of immuno-inhibitory molecules for Mongolian native animals during the progression of diseases including BVDV.

This is the first report describing the genetic characteristics of immuno-inhibitory molecules from Mongolian native cattle and yak. This study demonstrates that the amino acid sequences of immuno-inhibitory molecules from Mongolian native cattle and yak are highly homologous to each other and to their counterparts in other bovine breeds. Thus, further detailed investigations of these molecules are necessary to elucidate the differences in the immune responses to chronic infection in these animal species.

Conflict of interest

The authors declare no conflict of interest.

Acknowledgments

This research was partially supported by JSPS KAKENHI, Research Project for Improving Animal Disease Prevention Technologies to Combat Antimicrobial Resistance 2017-2021 FY, and by grants from the Science and Technology Research Promotion Program for Agriculture, Forestry, Fisheries, and Food Industry, Japan (grant no. 26058BC to S.K.) and the NARO, Bio-oriented Technology Research Advancement Institution (a special scheme project on regional developing strategy; grant no. 16817557 to S.K.).

References

- 1) Anderson AC. TIM-3: an emerging target in the cancer immunotherapy landscape. *Can Immunol Res* 2, 393-398, 2014
- 2) Arasanz H, Gato-Cañas M, Zuazo M, Ibañez-Vea M, Breckpot K, Kochan G, Escors D. PD-1 signal transduction pathways in T cells. *Oncotarget* 17232, 10.18632, 2017
- 3) Baker JC. The clinical manifestations of bovine viral diarrhoea infection. *Vet Clin North Am Food Anim Pract* 11, 425-445, 1995
- 4) Barber DL, Wherry EJ, Masopust D, Zhu B, Allison JP, Sharpe AH, Freeman GJ, Ahmed R. Restoring function in exhausted CD8 T cells during chronic viral infection. *Nature* 439, 682-687, 2006
- 5) Blackburn SD, Shin H, Haining WN, Zou T, Workman CJ, Polley A, Betts MR, Freeman GJ, Vignali DA, Wherry EJ. Coregulation of CD8+ T cell exhaustion by multiple inhibitory receptors during chronic viral infection. *Nat Immunol* 10, 29-37, 2009
- 6) Blank C, Mackensen A. Contribution of the PD-L1/PD-1 pathway to T-cell exhaustion: an update on implications for chronic infections and tumor evasion. *Cancer Immunol Immunother* 56, 739-745, 2007
- 7) Brock KV. The persistence of bovine viral diarrhoea virus. *Biologicals* 31, 133-135, 2003
- 8) Buchbinder EI, Desai A. CTLA-4 and PD-1 pathways: similarities, differences, and implications of their inhibition. *Am J Clin Oncol* 39, 98-106, 2016
- 9) Burda P, Jakob CA, Beinhauer J, Hegemann JH, Aebi M. Ordered assembly of the asymmetrically branched lipid-linked oligosaccharide in the endoplasmic reticulum is ensured by the substrate specificity of the individual glycosyltransferases. *Glycobiology* 9, 617-625, 1999
- 10) Chaplin DD. Overview of the immune response. *J Allergy Clin Immunol* 125, 3-23, 2010
- 11) Chen L, Flies DB. Molecular mechanisms of T cell co-stimulation and co-inhibition. *Nat Rev Immunol* 13, 227-242, 2013
- 12) Das M, Zhu C, Kuchroo VK. TIM-3 and its role in regulating anti-tumor immunity. *Immunol Rev* 276, 97-111, 2017
- 13) Finnefrock AC, Tang AM, Li FS, Freed DC, Feng MZ, Cox KS, Sykes KJ, Guare JP, Miller MD, Olsen DB, Hazuda DJ, Shiver JW, Casimiro DR, Fu TM. PD-1 Blockade in rhesus macaques: impact on chronic infection and prophylactic vaccination. *J Immunol* 182, 980-987, 2009
- 14) Goldberg MV, Drake CG. LAG-3 in cancer immunotherapy. *Curr Top Microbiol Immunol* 344, 269-278, 2011
- 15) Gorman JV, Colgan JD. Regulation of T cell responses by the receptor molecule Tim-3. *Immunol Res* 59, 56-65, 2014
- 16) Grosso JF, Kelleher CC, Harris TJ, Maris CH, Hipkiss EL, De Marzo A, Anders R, Netto G, Getnet D, Bruno TC, Goldberg MV, Pardoll DM, Drake CG. LAG-3 regulates CD8+ T cell accumulation and effector function in murine self- and tumor-tolerance systems. *J Clin Invest* 117, 3383-3392, 2007
- 17) Haeuptle MA, Hennet T. Congenital disorders of glycosylation: An update on defects affecting the biosynthesis of dolichol-linked oligosaccharides. *Hum Mutat* 30, 1628-1641, 2009
- 18) Hastings WD, Anderson DE, Kassam N, Koguchi K, Greenfield EA, Kent SC, Zheng XX, Strom TB, Hafler DA, Kuchroo VK. TIM-3 is expressed on activated human CD4+ T cells and regulates Th1 and Th17 cytokines. *Eur J Immunol* 39, 2492-2501, 2009
- 19) Hennet T. Diseases of glycosylation beyond classical congenital disorders of glycosylation. *Biochim Biophys Acta* 1820, 1306-1317, 2012
- 20) Helenius A, Aebi M. Roles of N-linked glycans in the endoplasmic reticulum. *Annu Rev Biochem* 73, 1019-1049, 2004
- 21) Huard B, Gaulard P, Faure F, Hercend T, Triebel F. Cellular expression and tissue distribution of the human LAG-3-encoded protein, and MHC class II ligand. *J Immunogenet* 39, 213-217, 1994
- 22) Iouzalén N, Andrae S, Hannier S, Triebel F. LAP, a lymphocyte activation gene-3 (LAG-3)-associated protein that binds to a repeated EP motif in the intracellular region of LAG-3, may participate in the down-regulation of the CD3/TCR activation pathway. *Eur J Immunol* 31, 2885-2891, 2001
- 23) Kaufmann DE, Walker BD. PD-1 and CTLA-4 inhibitory cosignaling pathways in HIV infection and the potential for therapeutic intervention. *J Immunol* 182, 5891-5897, 2009
- 24) Keir ME, Butte MJ, Freeman GJ, Sharpe AH. PD-1 and its ligands in tolerance and immunity. *Annu Rev Immunol* 26, 677-704, 2008

- 25) Kiyokawa E, Takai S, Tanaka M, Iwase T, Suzuki M, Xiang YY, Naito Y, Yamada K, Sugimura H, Kino I. Over expression of ERK, an EPH family receptor protein tyrosine kinase, in various human tumors. *Can Res* 54, 3645-3650, 1994
- 26) Khaitan A, Unutmaz D. Revisiting immune exhaustion during HIV infection. *Curr HIV/AIDS Rep* 8, 4-11, 2011
- 27) Kozako T, Yoshimitsu M, Fujiwara H, Masamoto I, Horai S, White Y, Akimoto M, Suzuki S, Matsushita K, Uozumi K, Tei C, Arima N. PD-1/PD-L1 expression in human T-cell leukemia virus type 1 carriers and adult T-cell leukemia/lymphoma patients. *Leukemia* 23, 375-82, 2009
- 28) Kuchroo VK, Umetsu DT, DeKruyff RH, Freeman GJ. The TIM gene family: emerging roles in immunity and disease. *Nat Rev Immunol* 3, 454-462, 2003
- 29) Matsumoto R, Matsumoto H, Seki M, Hata M, Asano Y, Kanegasaki S, Stevens RL, Hirashima M. Human ecalectin, a variant of human galectin-9, is a novel eosinophil chemoattractant produced by T lymphocytes. *J Biol Chem*. 273, 16976-16984, 1998
- 30) La-Beck NM, Jean GW, Huynh C, Alzghari SK, Lowe DB. Immune checkpoint inhibitors: new insights and current place in cancer therapy. *Pharmacotherapy* 35, 963-976, 2015
- 31) Mingala CN, Konnai S, Cruz LC, Onuma M, Ohashi K. Comparative molecule-immunological analysis of swamp- and riverine-type water buffaloes responses. *Cytokine* 46, 273-282, 2009
- 32) Mingala CN, Konnai S, Ikebuchi R, Ohashi K. Characterization of CTLA-4, PD-1 and PDL-1 of swamp and riverine type water buffaloes. *Comp Immunol Microbiol Infect Dis* 34, 55-63, 2011
- 33) Miseta A, Csutora P. Relationship between the occurrence of cysteine in proteins and the complexity of organisms. *Mol Biol Evol* 17, 1232-1239, 2000
- 34) Monney L, Sabatos CA, Gaglia JL, Ryu A, Waldner H, Chernova T, Manning S, Greenfield EA, Coyle AJ, Sobel RA, Freeman GJ, Kuchroo VK. Th1-specific cell surface protein TIM-3 regulates macrophage activation and severity of an autoimmune disease. *Nature* 415, 536-541, 2002
- 35) Ochirkhuu N, Konnai S, Odbileg R, Murata S, and Ohashi K. A preliminary survey of the seroprevalence of *Mycobacterium avium* subspecies *paratuberculosis* in Mongolian cattle. *Jpn J Vet Res* 63, 191-194, 2015
- 36) Ochirkhuu N, Konnai S, Odbileg R, Nishimori A, Okagawa T, Murata S, and Ohashi K. Detection of bovine leukemia virus and identification of its genotype in Mongolian cattle. *Arch Virol* 161, 985-991, 2016
- 37) Ochirkhuu N, Konnai S, Odbileg R, Odzaya B, Gansukh S, Murata S, and Ohashi K. Molecular detection and characterization of bovine viral diarrhoea virus in Mongolian cattle and yaks. *Arch. Virol.*161, 2279-2283, 2016
- 38) Ochirkhuu N, Konnai S, Odbileg R, Murata S, and Ohashi K. Molecular epidemiological survey and genetic characterization of *Anaplasma* species in Mongolian livestock. *Vector Borne Zoonotic Dis* 17, 539-549, 2017
- 39) Ochirkhuu N, Konnai S, Odbileg R, Murata S, and Ohashi K. Molecular epidemiological survey and genetic characterization of ovine gammaherpesvirus-2 in Mongolian livestock. *J Vet Med Sci*10.1292, 2017
- 40) Okagawa T, Konnai S, Ikebuchi R, Suzuki S, Shirai T, Sunden Y, Onuma M, Murata S, Ohashi K. Increased bovine TIM-3 and its ligand expressions during bovine leukemia virus infection. *Vet Res* 43, 45, 2012
- 41) Sabatos CA, Chakravarti S, Cha E, Schubart A, Sánchez-Fueyo A, Zheng XX, Coyle AJ, Strom TB, Freeman GJ, Kuchroo VK. Interaction of TIM-3 and TIM-3 ligand regulates T helper type 1 responses and induction of peripheral tolerance. *Nat Immunol* 4, 1102-1110, 2003
- 42) Sharpe AH, Wherry EJ, Ahmed R, Freeman GJ. The function of programmed cell death 1 and its ligands in regulating autoimmunity and infection. *Nat Immunol* 8, 239-245, 2007
- 43) Shimauchi T, Kabashima K, Nakashima D, Sugita K, Yamada Y, Hino R, Tokura Y. Augmented expression of programmed death-1 in both neoplastic and non-neoplastic CD4+ T-cells in adult T-cell leukemia/lymphoma. *Int J Cancer* 121, 2585-2590, 2007
- 44) Tieu R, Amancha PK, Villinger F, Byrareddy SN. TIM-3, a possible target for immune therapy in cancer and chronic viral infections. *Austin Virol Retro Virol* 1, 6. 2014
- 45) Ullrich A, Schlessinger J. Signal transduction by receptors with tyrosine kinase activity. *Cell* 61, 203-212, 1990
- 46) Velu V, Titanji K, Zhu BG, Husain S, Pladevega A, Lai LL, Vanderford TH, Chennareddi L, Silvestri G, Freeman GJ,

- Ahmed R, Amara R. Enhancing SIV-specific immunity *in vivo* by PD-1 blockade. *Nature* 458, 206–210, 2009
- 47) Wada J, Kanwar YS. Identification and characterization of galectin-9, a novel beta-galactoside-binding mammalian lectin. *J Biol Chem* 272, 6078–6086, 1997
- 48) Walker LS, Sansom DM. The emerging role of CTLA4 as a cell-extrinsic regulator of T cell responses. *Nat Rev Immunol* 11, 852–863, 2011
- 49) Wing K, Yamaguchi T, Sakaguchi S. Cell-autonomous and -non-autonomous roles of CTLA-4 in immune regulation. *Trends Immunol* 32, 428–433, 2011
- 50) Workman CJ, Dugger KJ, Vignali DA. Cutting edge: molecular analysis of the negative regulatory function of lymphocyte activation gene-3. *J Immunol* 169, 5392–5395, 2002
- 51) Zhu C, Anderson AC, Schubart A, Xiong H, Imitola J, Khoury SJ, Zheng XX, Strom TB, Kuchroo VK. The TIM-3 ligand galectin-9 negatively regulates T helper type 1 immunity. *Nat. Immunol.* 6, 1245–1252, 2005