



Title	THE RELATIONSHIP BETWEEN GENERATION AND INSPECTION OF MENTAL IMAGERY: AN ERP STUDY
Author(s)	Yamazaki, Keiko; Katayama, Jun'ichi
Citation	The 46th Annual Meeting of the Society for Psychophysiological Research
Issue Date	2006-10
Doc URL	<a href="http://hdl.handle.net/2115/15863">http://hdl.handle.net/2115/15863</a>
Type	conference presentation
Note	10/25-29, 2006. The Hyatt Regency Hotel, Vancouver, BC, CANADA. Poster Session 2 • Friday, October 27, 2006 : 64
File Information	06SPR_Keiko.pdf



[Instructions for use](#)

# THE RELATIONSHIP BETWEEN GENERATION AND INSPECTION OF MENTAL IMAGERY: AN ERP STUDY

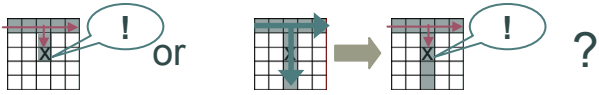
Keiko Yamazaki and Jun'ichi Katayama, Hokkaido University

E-mail: keiko115@edu.hokudai.ac.jp

## Introduction

Mental imagery process: **generation**, maintenance, **inspection**, and manipulation (Kosslyn 1994)

Whether does inspection occur during generation or after generation?



**Purpose**: to investigate the relationship between generating and inspecting images, using behavioral and brain activity related to these processes.

## Methods

### Participants:

12 students: Mean age 25.3 years.

### Procedure:

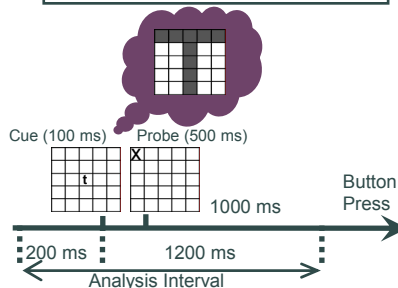
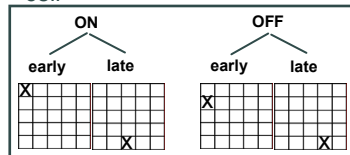
Participants visualized a corresponding uppercase letter to the cue stimulus on the probe grid and decided whether the mark fell on or off the visualized letter as quickly as possible.

Half of the trials were "**early trials**"; when the probes placed on a segment drawn early in the order if they would be drawn on paper, and the other half were "**late trials**".

### Stimulus:

**Cue stimulus:**  
 "simple trials" (T or L)  
 "complex trials" (G or S)  
 and intermediate (C or U).

**Probe stimulus:**  
 5 x 5 grid (visual angle 4.3°)  
 with an "X" mark probe in one cell



Imagery task and example of the stimulus

### Recording:

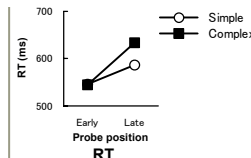
EEG from 25 scalp sites  
 reference: averaged earlobes  
 Sampling rate: 200 Hz  
 band-pass filter: 0.05-30 Hz  
 Analysis interval: 1200 ms  
 (with a 200-ms pre-cue baseline)

### Analysis:

ERPs were divided into early range (0-500 ms), and late range (500-1200 ms). Behavioral measure and ERP data were assessed with repeated measures ANOVA (Complexity of cue x probe position).

## Results & Discussion

### Behavior

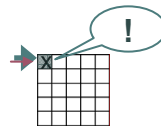


### Early trials

Simple = Complex trials  
 Late trials  
 Simple < Complex trials

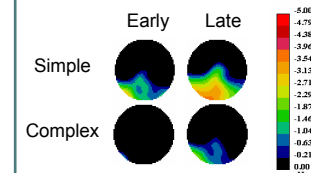
If participants inspected image after the generation was finished, there would have been difference between RT for simple and complex trials in the early trials.

Thus they inspected image during generation in this study.

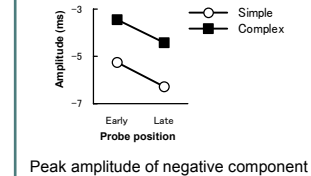
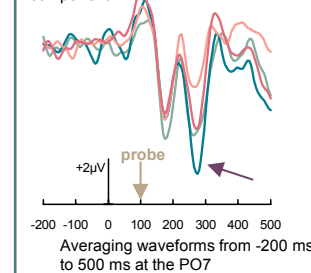


### ERP

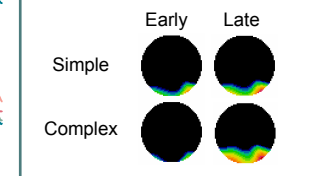
#### In the early latency range



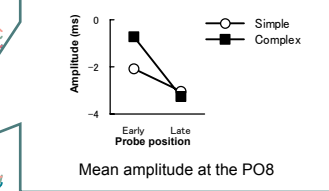
Topography of amplitude of the negative component



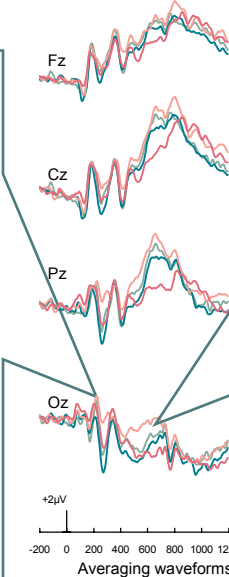
#### In the late latency range



Topography of mean amplitude from 400 to 800 ms



Mean amplitude at the PO8



#### In the late latency range

**Negative deflection** was observed from 400 ms to 800 ms.

Mean amplitude  
**Early trials: Simple > Complex trials**  
**Late trials: Simple = Complex trials**

### In the early latency range

**Negative component** was evoked about 250 ms after the stimulus presentation largest over the left parieto-occipital electrodes.

Peak amplitude  
**Late > Early trials**  
**Simple > Complex trials**

### Discussion

**The ERP effect in the early latency range** was not correspond to RT results. Because the cue was presented when attention window to generate and inspect image was staying around late probe position, visual ERP component was enhanced.

**The negative deflection in the late latency range** is considered to be generation-related brain activity (Farah, 1989). The effect of complexity may reflect vividness of visual representation.

## Conclusion

We could generate and inspect mental images simultaneously.



