



Title	Anomuran Decapod Fauna of Hokkaido, Japan (With 1 Text-figure)
Author(s)	MIYAKE, Sadayoshi
Citation	北海道大學理學部紀要, 13(1-4), 85-92
Issue Date	1957-08
Doc URL	http://hdl.handle.net/2115/27206
Type	bulletin (article)
File Information	13(1_4)_P85-92.pdf



[Instructions for use](#)

Anomuran Decapod Fauna of Hokkaido, Japan¹⁾

By

Sadayoshi Miyake

(Zoological Laboratory, Kyushu University)

(With 1 Text-figure)

The material here dealt with came from following sources: 1) the collections in the Zoological Laboratories and the Akkeshi Marine Biological Laboratory of the Hokkaido University, 2) the collection of the Shirikishinai Marine Biological Laboratory of the Hokkaido Gakugei University, 3) the collection of the National Science Museum, Tokyo, 4) some specimens of the Tokyo College of Fisheries.

The Anomuran Decapod fauna of Hokkaido was dealt with fragmentarily by several authors including Balss (1913), Bouvier (1898), Doflein (1902), Makarov (1934, 1935), Ortmann (1891, 1892), Parisi (1917, 1918), Rathbun (1902), Stimpson (1858, 1860, 1907), Terao (1913) and Yamaguchi & Yamada (1955). Twenty-six species are enumerated in these reports.

After my examination, seven more species, marked with an asterisk, are added in the list as new to the fauna. Detailed descriptions of the materials in this list, together with accounts on some new species, will be published later.

I am especially indebted to Prof. Y.K. Hiraiwa of the Kyushu University, who has provided me with facilities required for the pursuit of this work. I wish to express my sincere thanks to Prof. Tohru Uchida of the Hokkaido University, for his supervision and encouragement given me throughout my carcinological work and also to gentlemen, A. Ichikawa, M. Imazima, F. Iwata, I. Kubo, E. Niiyama, I. Taki, M. Yamada and E. Yamaguchi, for placing the materials in my hands for study.

I. Family CALLIANASSIDAE

1. *Callianassa (Trypaea) subterranea japonica* Ortmann
Japanese name: Sunamoguri

Callianassa subterranea var. *japonica* Ortmann 1891, p. 56, pl. 1, f. 10a — Tokiobai (Type locality); — Doflein 1902, p. 644 — Hakodate.

2. *Callianassa (Trypaea) californiensis* Dana, 1854 Type locality: California.

Callianassa (Trypaea) californiensis Parisi 1917, p. 23 — Nemuro.

1) Contributions from the Zoological Laboratory, Faculty of Agriculture, Kyushu University, No. 230.

Jour. Fac. Sci. Hokkaido Univ. Ser. VI, Zool. 13, 1957 (Prof. T. Uchida Jubilee Volume).

3. *Callianassa (Trypaea) harmandi* Bouvier, 1901
 Jap. name : Harumansunamoguri
 Type locality : Tokyo.

Callianassa (Trypaea) harmandi Parisi 1917, p.24 —Nemuro.

- *4. *Callianassa (Trypaea) gigas japonica* Makarov

Callianassa gigas var. *japonica* Makarov 1935, pp. 323-324, f.4 —Japanisches Meer, Meerbusen Peter der Große, Bucht Patrokl (Type locality).

Material examined: 1) Moheji, Hakodate Bay, 1 male (No. 3790), shore collecting, Niiyama, June 18, 1954. 2) Shirikishinai, 2 males (Nos. 4634-4635), shore collecting, Imazima, May 20, 1955.

5. *Upogebia (Upogebia) major* (de Haan) Jap. name : Anajako

Gebia major de Haan 1849, p.165, pl.35, f.7 —Japan (Type locality);—Oka 1941, p. 265—Akkeshi.

Upogebia major Yamaguchi & Yamada 1955, p.131 —North Japan;—Oguro 1957, p.31—Akkeshi.

II. Family GALATHEIDAE

6. *Galathea pubescens* Stimpson Jap. name : Kebuka-garatea

Galathea pubescens Stimpson 1858, p.90; 1907, p.233 —Hakodadi (=Hakodate); Ousima (=Amami-Ōshima), 20-30 fathoms (Type localities).

7. *Munida japonica* Stimpson, 1858 Jap. name : Yamato-munida
 Type locality : Kagoshima Bay, 20 fathoms deep.

Munida japonica Yamaguchi & Yamada 1955, p.133 —North Japan.

III. Family PORCELLANIDAE

8. *Pachycheles stevensii* Stimpson Jap. name : Kobu-kanidamashi

Pachycheles stevensii Stimpson 1858, p.80; 1907, p.187, pl. 23, f. 6 —West coast of Yesso (=Hokkaido, Type locality).

Material examined: Shirikishinai, 2 males, 15×15; 10.5×10 mm (Nos. 4622-4623), shore collecting, Imazima, Aug. 17, 1955.

IV. Family PAGURIDAE

9. *Paguristes digitalis* Stimpson New Jap. name : Yasuri-himeyokobasami

Paguristes digitalis Stimpson 1858, p.85; 1907, pp.212-213, pl.25, f.1 —Hakodadi (Type locality).

- *10. *Paguristes barbatus* Ortmann Jap. name : Kebuka-himeyokobasami

Paguristes barbatus Ortmann 1892, pp.279-281, pl. 12, f.7, 7p —Tokibai; Sagamibai, 100 Fd.

(Type localities).

Not *Clibanarius barbatus* Heller, 1862.

Material examined: Hariusu, Ishikari Bay, 2 ovigerous females (Nos. 4343-4344), shore collecting, Ichikawa, July 27, 1955.

11. *Clibanarius japonicus* Rathbun New Jap. name: Rasuban-yokobasami
Clibanarius japonicus Rathbun 1902, p.35, f.3-5 —Mororan (=Muroran, Type locality).

*12. *Pagurus brachiomatus* (Thallwitz) Jap. name: Ikubi-hon-yadokari
Eupagurus brachiomastus Thallwitz 1891, p.35 —Japan oder China (Type locality).

Material examined: 1) Hariusu, Ishikari Bay, 3 males 1. c. 11, 10, 9.5 mm (Nos. 4237-4239), shore collecting, Ichikawa, July 27, 1955. 2) Akkeshi, 2 males (Nos. 3005-3006), Niiyama, May 19, 1944. 3) Muroran, 1 male (No. 3798), Niiyama, June 30, 1954. 4) Shirikishinai, 2 mles, 15×11; 15.5×12 mm (Nos. 4623-4624), shore collecting, Imazima, May 24, 1955.

*13. *Pagurus cavimanus* (Miers) Jap. name: Gotō-hon-yadokari
Eupagurus cavimanus Miers 1879, pp.48-49, pl.3, f. 1 —41°40'N., 141°10'E. (Tsugaru Strait, Type locality); —Yamaguchi & Yamada 1955, p. 132 —North Japan (Common species).

Material examined: 1) Off Shirikishinai, 1 male, 25×21 mm (No. 4625), collected by a long line at a depth of 180 fathoms, Imazima, Feb. 2, 1956. 2) Aomori, 1 male, 37×32 mm, holotype of *Eupagurus gotoi* Terao (1913), deposited in the National Science Museum, Tokyo.

14. *Pagurus constans* (Stimpson) Jap. name: Igaguri-hon-yadokari
Eupagurus constans Stimpson 1858, p. 86; 1907, pp.218-220, pl.24, f.3. Hakodadi Bay (Type locality); —Yamaguchi & Yamada 1955, p.132 —North Japan (Common species).

*15. *Pagurus dubius* (Ortmann) Jap. name: Yubinaga-hon-yadokari
Eupagurus dubius Ortmann 1892, pp. 307-308, pl.12, f.14, 14k —Tokiobai; Sagamibai (Type localities).

Material examined: 1) Oshoro, 1 male, 10×6.5 mm (No. 3797), shore collecting, Niiyama, Aug. 1954. 2) Hokkaido, 2 mles, 11×6.8; 6.8×4 mm (Nos. 3944-3945), deposited in the National Science Museum, Tokyo.

16. *Pagurus gracilipes* (Stimpson) Jap. name: Hadaka-hon-yadokari
Eupagurus gracilipes Stimpson 1858, p.86; 1907, pp.217-128 —Off the coast of Nippon, 38°N., at a depth of 30 fathoms; Hakodadi Bay (Type localities); —Terao 1913, pp.368-369 —Takashima; Otaru Bay; Okujiri Island; —Yamaguchi & Yamada 1955, p.132 —North Japan (Common species).

17. *Pagurus hirsutiusculus* (Dana), 1851 Type locality : Puget Sound.

Eupagurus hirsutiusculus Stimpson 1858, p.88; 1907, pp.223-224 —Hakodadi.

18. *Pagurus hirtimanus* White

Pagurus hirtimanus White 1847, p. 60 —Philippine Islands (Type locality).

Eupagurus hirtimanus Terao 1913, p. 369 —Takashima, Otaru Bay.

*19. *Pagurus lanuginosus* de Haan Jap. name : Kebuka-hon-yadokari

Pagurus lanuginosus de Haan 1849, p.207, pl.49, f.5 —Japan (Type locality).

Material examined : 1) Oshoro, 1 male, 9×6 mm (No. 3789), shore collecting, Niiyama, Aug. 20, 1954. 2) Ishikari, 1 male, 10.1×6.8 mm (No. 3963), Ichikawa, Oct. 13–15, 1954. 3) Moheji, Hakodate Bay, 2 males, 9×11; 6×6 mm (Nos. 3787–3788), shore collecting, Niiyama, Aug. 1954. 4) Shirikishinai, 2 males, 15×11; 15.5×12 mm (Nos. 4623–4624), shore collecting, Imazima, May 24, 1955.

20. *Pagurus middendorffii* Brandt Jap. name : Tenaga-hon-yadokari

Pagurus (Eupagurus) middendorffii Brandt 1851, pp.108–110, pl.5, f.1–16 —Ochotskisches Meer (Type locality).

Eupagurus middendorffii Stimpson 1858, p.88; 1907, p.226 —Hakodadi Bay;—Doflein 1902, p.646 —Jesso; —Rathbun 1902, p.35 —Hakodate; —Balss 1913, p.58 —Todohokke, Hakodate; —Yamaguchi & Yamada 1955, p.132 —Hokkaido (Common species).

Material examined : 1) Akkeshi, 1 male (No. 3007), Niiyama, May 19, 1944; 6 males, deposited in the National Science Museum, Tokyo, Iwasa, May 19, 1944. 2) Aikappu, Akkeshi Bay, 3 males (Nos. 3638–3640), Iwata, Apr. 22, 1954. 3) Atsuta, Ishikari Bay, 1 male, 6×6.8 mm, 1 female, 8.5×7 mm (Nos. 4166–4169), Ichikawa, June 19, 1955. 4) Moheji, Hakodate Bay, 3 males (Nos. 3799–3801), shore collecting, Niiyama, July 1, 1954. 5) Shirikishinai, 1 male, 14×10 mm (No. 4629), Imazima, Aug. 5, 1955.

Habitat : It is very common on the shore of Akkeshi inhabiting weedy and stony shore between tide-marks.

Colour in life : Body and legs greenish grey.

21. *Pagurus ochotensis* Brandt Jap. name : Ohotsuku-hon-yadokari

Pagurus (Eupagurus) Bernhardus var. *ochotensis* Brandt 1851, p.108 —Ochotskisches Meer (Type locality).

Eupagurus ochotensis Stimpson 1858, p.86; 1907, p.218—Hakodadi Bay; —Parisi 1918, p.113 —Hakodate; —Yamaguchi & Yamada 1955, p.132 —Hokkaido (Common species).

Eupagurus spinimanus Terao 1913, p.372 —Takashima, Siribeshi.

Material examined : 1) Otaru, 1 male (No. 3043), Kubo, 1943. 2) Akkeshi Bay, 2 males (Nos. 3008–3009), Niiyama, May 7, 1944. 3) Shiriha-misaki, Akkeshi

Bay, 1 male, 45×40 mm (No. 3644), Iwata, May 13, 1956.

Habitat: It is common in the Akkeshi Bay, living on rock or sand bottoms at a depth of five meters below the tide-marks. It is often collected by the trap net of the plaice-fishing.

22. *Pagurus pectinatus* (Stimpson) Jap. name: Tsumabeni-hon-yadokari

Eupagurus pectinatus Stimpson 1858, p.87; 1907, pp.220-221 —Hakadadi (Type locality);— Yamaguchi & Yamada 1955, p.132 —North Japan (Common species).

Material examined: 1) Aikappu, Akkeshi Bay, 1 male (No. 3641), obtained among weed on a stony bottom between tide-marks, Iwata, Apr. 22, 1954. 2) Oshoro, Ishikari Bay, 1 male (No. 3058), Niiyama, June 15, 1944; 2 males, 18×15; 20.5×18 mm (Nos. 4636-4637), inhabited in a sponge *Suberites* sp., collected by a gill net of the plaice-fishing, Ichikawa, May 5, 1956.

23. *Pagurus samuelis* (Stimpson), 1857 Jap. name: Honyadokari.

Type locality: Tomales Bay, California.

Eupagurus samuelis Stimpson 1858, p.88; 1907, pp.224-225 —Hakodadi; —Doflein 1902, p. 646 —Nemuro, Hakodate.

Material examined: 1) Oshoro, 4 males (Nos. 3794-3796), Niiyama, Aug. 1954. 2) Atsuta, Ishikari Bay, 1 female, 8.5×5.8 mm (No. 4171), Ichikawa, June 19, 1955. 3) Shirikishinai, 3 males, 9.5×8.5; 8×5.5; 7×5 mm (Nos. 4626-4628), Imazima, May 24, 1955.

V. Family LITHODIDAE

24. *Hapalogaster dentata* (de Haan) Jap. name: Ibotoge-gani

Lomis dentata de Haan 1849, pp. 219-220, pl.48, f.2, pl. Q —Japan (Type locality).

Hapalogaster dentatus Stimpson 1858, p.83 —Hakodadi Bai;—Yamaguchi & Yamada 1955, p.132 —Oshoro, Hakodate.

Material examined: 1) Moheji, 1 male, 6.2×6.8 mm (No. 3792), Niiyama, July 1, 1954. 2) Shirikishinai, 1 female, 19×21.3 mm (No. 4621), shore collecting Imazima, May 3, 1955.

25. *Hapalogaster grebnitzkii* Schalfeew, 1892 Text-fig. 1

Jap. name: Shōjō-gani

Type localities: Bering Islands and Kadiak, Alaska.

Hapalogaster grebnitzkii Yamaguchi & Yamada 1955, p.132 —Akkeshi.

Material examined: Tomata, Akkeshi Bay, 2 males, 19×22; 20×23 mm (Nos. 3642-3643), Iwata, May 16, 1954.

Habitat: Seldom seen at the depth of three to four meters on sandy bottom. It is collected by the trap net of the plaice-fishing.

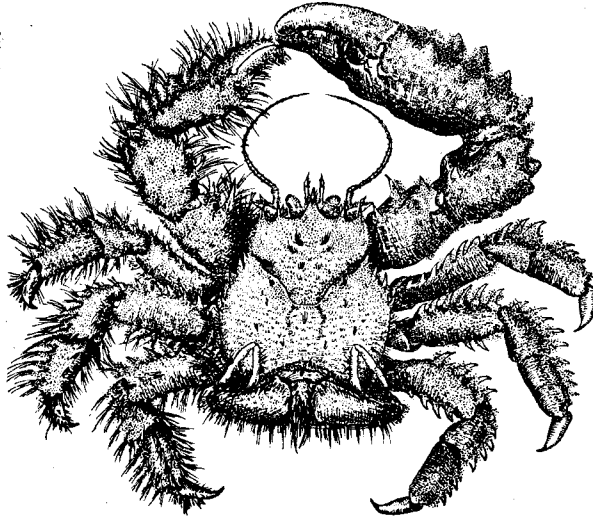


Fig. 1 *Hapalogaster grebnitzkii* Schalfeew, $\times 1$.

*26. *Dermaturus mandtii* Brandt, 1850 Jap. name: Shiwa-gani

Dermaturus mandtii Urita 1942, pp. 47-49, f.15 —Saghalien.

Material examined: Shiriha-misaki, Akkeshi Bay, 3 males, 18×19.2 ; 17.8×18.2 ; 11.2×11.5 mm, 2 females, 11×9.8 ; 8.5×8.8 mm (Nos. 3645-3649), Iwata, Apr. 24, 1954.

Habitat. It is common, but not easy to catch in the shore of the Akkeshi Bay. It is found on rock or sand bottoms at a depth of five meters below the tide-mark, living with *Pagurus ochotensis* and *Pagurus middendorffii*.

27. *Oedignathus inermis* (Stimpson), 1860 Jap. name: Ibo-gani

Type locality: Puget Sound.

Dermaturus inermis Balss 1913, p. 71 —Shiramaki.

Oedignathus inermis Yamaguchi & Yamada 1955, p.131 —Hokkaido.

Material examined: 1) Off Oshoro, 50 meters deeps, 1 male, 20×18.8 mm (No. 3847), collected by a gill net of the turbot-fishing, Yamada, July 6, 1954. 2) Shirikishinai, 1 ovigerous female, 17.5×18 mm (No. 4620). Imazima, Apr. 23, 1955.

28. *Paralithodes camtschaticus* (Tilesius), 1812 Jap. name: Taraba-gani

Paralithodes camtschatica Yamaguchi & Yamada 1955, p.132 —Hokkaido.

29. *Paralithodes brevipes* (H. Milne-Edwards et Lucas), 1841

Jap. name. : Hanasaki-gani

Paralithodes brevipes Yamaguchi & Yamada 1955, p. 132 —From Akkeshi to Nemuro.

30. *Cryptolithodes expansus* Miers Jap. name : Menko-gani

Cryptolithodes expansus Miers 1879, pp.47-48 —North Japan (Type locality);—Yamaguchi & Yamada 1955, p.133 —North Japan.

31. *Sculptolithodes derjugini* Makarov

Sculptolithodes derjugini Makarov 1934, pp.251-254, f.1-2 —49°14'N., 140°28'E., 25 m deep; 47°41'N., 139°15'E., 35 m deep (Type localities).

VI. Family ALBUNEIDAE

32. *Lophomastix brevirostris* Urita Jap. name : Urita-kudahigegani

Lophomastix brevirostris Urita 1934, pp.149-154, f.1-2 —Enoura, Nagahama, Aniwa Bay; Tôbusi, Honto; Rakuma, Randomari; west coast of Saghalien (Type localities). The genus name *Lophomastix* is erroneous spelling of *Lophomastix* Benedict, 1904; — Yamaguchi & Yamada 1955, p. 133 —North Japan.

Material examined : 1) Off Oshoro, at a depth of 50 meters, collected by a gill net of the turbot-fishing, 1 female, 26×25 mm (No. 2846), Yamada, July 6, 1954. 2) Aomori, 1 female, 24.5×22.5 mm (No. 2304), Tanabe, Oct. 1943. 3) Odomari, Saghalien, 1 male, 22.5×20.5 mm (No. 3302), 1 ovigerous female, 30×28 mm (No. 3303), metatypes identified by late Mr. Urita.

33. *Blepharipoda fauriana* Bouvier New Jap. name : Fushime-higegani

Blepharopoda fauriana Bouvier 1898, pp. 566-567 —Hakodate (Type locality). The genus name *Blepharopoda* is erroneous spelling of *Blepharipoda* Randall, 1839.

Literature

- Balss, H. 1913. Ostasiatische Decapoden. I. Die Galatheiden und Paguriden. Abh. Ak. Wiss. math.-phys. Kl. Suppl. 2(9) : 1-85, pls.1-2.
- Bouvier, E.-L. 1898. Sur le *Blepharopoda fauriana*, Crustacé anomoure de la famille de des Hippidés. C.R. Ac. Sci. Paris 127(16): 556-567.
- Brandt, F. 1851. Krebse. In : Middendorff's Reise in den äusersten Norden und Osten Siberiens. 2, Zool. 78-112, pls.5-6.
- Doflein, F. 1902. Ostasiatische Dekapoden. Abh. Ak. Wiss. München Cl. 2, 21(3): 613-670, pls.1-3.
- Haan, W. de 1833-1850. Crustacea. In : P. F. de Siebold, Fauna Japonica, 1-244, pls. 1-55, A-Q, 1, 2.
- Makarov, W.W. 1934. Eine neue Gattung der Familie Lithodidae aus dem Japanischen Meer. Zool. Anz. Leipzig 108: 251-252.
- 1935. Beschreibung neuer Dekapoden-Formen aus den Meeren des Fernen Ostens. Ibid. 109: 319-324.
- Marukawa, H. 1933. Biological and fishing research on Japanese king-crab, *Paralithodes camtschatica* (Tilesius). J. Imp. Fish. Exp. Stat. (4), 1-153, pls.1-9.

- Miers, E. J. 1879. On a collection of Crustacea made by Capt. H. C. St. John, R. N., in the Korean and Japanese Seas. Proc. zool. Soc. London 1879: 18-61, pls. 1-3.
- Nakazawa, K. 1927. Anomura. In: Illustrated Encyclopedia of the fauna of Japan. Hokuryukan, Tokyo, pp. 1035-1051. f. 1993-2025.
- Nakazawa, K., Kubo, I. & S. Miyake 1947. Macrura and Anomura. Ibid. Revised 1st edition, pp. 731-756, f. 2115-2178.
- 1949. Anomura. In: Ibid. Revised 2nd edition, pp. 731-753, f. 2155-2177.
- Oguro, C. 1957. Note on *Upogebia major* infected with an Epicaridean Parasite. Annot. Zool. Jap. Tokyo, 30 (1): 31-32.
- Oka, T. B. 1941. Oocyte-like cells in the ovarian part of testis of *Gebia major*. J. Fac. Sci. Imp. Univ. Tokyo, Sec. 4, Zool. 5(3): 265-289, pl. 10.
- Ortmann, A. 1891. Die Decapoden-Krebse des Strassburger Museums. III. Homaridea, Loricata und Thalassinidea. Zool. Jb. Syst. 6: 1-58, pl. 1.
- 1892. Ditto. IV. Galatheidea und Paguridea. Ibid. 6: 241-326, pls. 11-12.
- Parisi, B. 1917. I Decapodi Giapponensi de Museo di Milano. V. Galatheidea e Reptantia. Atti Soc. ital. Soc. nat. Milano 56: 1-24.
- 1918. Ditto. VI. Catometopa e Paguridea. Ibid. 57: 90-115.
- Rathbun, M. J. 1902. Japanese Stalk-eyed Crustaceans. Proc. U.S. nat. Mus. Washington 26: 23-55.
- Stimpson, W. 1858. Prodromus Descriptionis Animalium evertibratorum, quae in Expeditione ad Oceanum Pacificum Septentrionalem. VII. Crustacea Anomura. Proc. Ac. nat. Sci. Philadelphia 1858: 63-91.
- 1860. Ditto. VIII. Crustacea Macrura. Ibid. 1860: 91-116.
- 1907. Report on the Crustacea (Brachyura and Anomura) collected by the North Pacific Exploring Expedition, 1853-1856. Smithsonian. Misc. Coll. 49: 1-240, pls. 1-26.
- Terao, A. 1913. A catalogue of hermit-crabs found in Japan (Paguridea excluding Lithodidae), with description of four new species. Annot. Zool. Jap. Tokyo 8(3): 355-391.
- Thallwitz, J. 1891. Decapoden-Studien. Abh. Zool. Anthr.-Ethn. Mus. Dresden. 1890-1891 (3): 1-55, pl. 1.
- Urita, T. 1934. A new crab of the family Albuneidae from Saghalien. Zool. Mag. Tokyo 46: 149-154.
- 1942. Decapod Crustaceans from Saghalien, Japan. Bull. biogeogr. Soc. Jap. 12(1): 1-78.
- White, A. 1847. List of the specimens of Crustacea in the collection of the British Museum, London pp. i-viii, 1-143.
- Yamaguchi, E. & M. Yamada 1955. Marine Invertebrates of North Japan. Hokkai-kyoiku-hyoronsha, Sapporo. 189 pp.