



Title	The Subfamily Staphylininae (Coleoptera, Staphylinidae) in the Kuril Archipelago
Author(s)	Shibata, Yasutoshi; Maruyama, Munetoshi; Ôhara, Masahiro
Citation	北海道大学総合博物館研究報告, 3, 151-159
Issue Date	2006-03
Doc URL	<a href="http://hdl.handle.net/2115/47805">http://hdl.handle.net/2115/47805</a>
Type	bulletin (article)
Note	Biodiversity and Biogeography of the Kuril Islands and Sakhalin vol.2
File Information	v. 2-8.pdf



[Instructions for use](#)

## The Subfamily Staphylininae (Coleoptera, Staphylinidae) in the Kuril Archipelago

Yasutoshi Shibata<sup>1</sup>, Munetoshi Maruyama<sup>2</sup> and Masahiro Ôhara<sup>3</sup>

<sup>1</sup>Tsurukawa 3-8-13, Machida-shi, Tokyo, 195-0061 Japan; <sup>2</sup>Department of Zoology, National Science Museum, Hyakunin-chô 3-23-1, Shinjuku-ku, Tokyo, 169-0073 Japan; <sup>3</sup>The Hokkaido University Museum, Hokkaido University, N10, W8, Sapporo, 060-0810 Japan.

**Abstract** A species list of the subfamily Staphylininae of the family Staphylinidae in the Kuril Archipelago is given. Twenty four species are recognized in the Kuril Archipelago based on literature records and the specimens collected during field surveys of the International Kuril Island Project. Of those, *Medhiana paupera*, *Philonthus (Onychophilonthus) tarsalis*, *P. (P.) cf. azabuensis*, *P. (P.) oberti*, *P. (P.) succicola*, *P. (P.) wuesthoffi*, *Ocybus (Pseudocybus) nigroaeneus*, *Liusus humeralis*, *Quedius (Microsaurus) mesomelinus*, *Q. (Raphirus) sublimbatus* and *Q. (R.) fulvicollis* are new to Kuril Archipelago, *Othius rosti* is new to Kunashir and Urup, *P. (P.) nudus* is new to Urup, Chirpoi, Simushir, Ushishir, Matua, Shiashkotan, Kharimkotan, Onekotan, Paramushir, Alaid and Shumshu, and *Hadropinus fossor* is new to Urup, Chirpoi and Simushir. Two species, *Othius rufipennis* and *Liusus hilleri*, are excluded from the fauna of the Kuril Archipelago.

**Key words:** Staphylininae, Kuril, new record.

### Introduction

The fauna of staphylinid beetles of the Kuril Archipelago is poorly known. Only fourteen species of the subfamily Staphylininae are known from the islands (70 species are known from Hokkaido, Japan).

A biotic expedition to the Kuril Archipelago (International Kuril Island Project: IKIP), jointly organized by researchers from Japan, USA and Russia, were held from 1994 to 2000. Insect survey and staphylinid beetles collecting were carried out predominantly by the third author (M.Ô.).

Most specimens were identified by the senior author (Y.S.). The staphylinid specimens were deposited in the Hokkaido University Museum, Sapporo, Japan, the Institute of Biology and Soil Science, Russian Academy of Science, Far Eastern Branch, Vladivostok, Russia and the California Academy of Science, San Francisco, USA.

### Results: List of Species

Asterisk in species name indicates new record from the Kuril Archipelago.

#### *Zeteotomus maximus* (Bernhauer)

*Metoponcus maximus* Bernhauer, 1907, Verh. zool.-bot.

Ges. Wien 57: 384 (original description).

*Zeteotomus maximus*: Smetana, 1982, Coleopt. Bull. 36: 309 (record from Kunashir).

*IKIP material*. Not examined.

*Distribution*. Japan (Hokkaido, Honshu, Shikoku, Kyushu), Kuril Archipelago (Kunashir), China.

*Comments*. This species has not been collected during the IKIP expeditions.

#### *Zeteotomus dilatipennis* (Kirschenblatt)

*Metoponcus dilatipennis* Kirschenblatt, 1948, Ent. Obozr. 30: 48 (original description).

*Zeteotomus dilatipennis*: Smetana, 1982, Coleopt. Bull. 36: 310 (record from Kunashir).

*IKIP material*. Not examined.

*Distribution*. Kuril Archipelago (Kunashir), Ussuri Province, Primorskij Krai.

*Comments*. This species has not been collected during the IKIP expeditions.

#### *Nudobius lentus* (Gravenhorst)

*Staphylinus lentus* Gravenhorst, 1806, Mon. Col. Micr., p. 101 (original description).

*Nudobius lentus*: Smetana, 1982, Coleopt. Bull. 36: 310 (record from Kunashir).

*IKIP material*. Not examined.

*Distribution*. Japan (Hokkaido), Kuril Archipelago (Kunashir), Amur, China, Turkey, Europe.

*Comments*. This species has not been collected during the IKIP expeditions.

**\**Medhiama paupera* (Sharp)**

*Xantholinus paupera* Sharp, 1889, Ann. Mag. nat. Hist., (6) III: 250 (original description).

*Medhiama paupera*: Bordoni, 2002, Museo regionale Sci. nat. Trino, Monografie, 23: 666 (change in combination).

*IKIP material*. KUNASHIR: 1 ♀ [KU97NM004]. ITURUP: 3 ♀♀ [IT97NM015]. BRAT-CHIRPOEV: 1 ♂ [BC97MO-039B].

*Distribution*. Japan (Hokkaido, Honshu, Shikoku), Kuril Archipelago (Kunashir, Iturup, Brat-Chirpoev), China, Nepal, India.

*Comments*. New record from the Kuril Archipelago.

***Othius rosti* Bernhauer**

*Othius rosti* Bernhauer, 1907, Verh. zool.-bot. Ges. Wien, 57: 385.

*Othius rosti*: Assing, 1999, Beitr. Ent., 49: 16 (Iturup).

*IKIP material*. ITURUP: 2 ♂♂, 2 ♀♀ [IT96NM-020]. URUP: 1 ♀ [UR95MO-002]; 1 ♀ [UR95MO-006]; 1 ♂, 1 ♀ [UR95MO-007]; 1 ♂ [UR95VR-035A]; 6 ♂♂, 1 ♀ [UR96MO-048B].

*Non-IKIP material*. KUNASHIR: 4 ♂♂, 2 ♀♀, 16–20 VIII 1993 (no other data).

*Distribution*. Japan (Hokkaido, Honshu), Kuril Archipelago (Kunashir, Iturup, Urup), Sakhalin, Ussuri, Amur.

*Comments*. New record from Kunashir and Urup.

***Gabrius ophion* Smetana**

*Gabrius ophion*: Smetana, 1984, Pan-Pacific Entomologist 60: 146 (record from Kunashir).

*IKIP material*. Not examined.

*Distribution*. Japan (Hokkaido, Honshu, Shikoku), Kuril Archipelago (Kunashir), Korea.

*Comments*. This species has not been collected during the IKIP expeditions.

**\**Philonthus (Onychophilonthus) tarsalis* Smetana**

*Philonthus (Onychophilonthus) tarsalis* Smetana, 1963, Acta ent. Mus. natn. Pragae, 35: 412 (Primorskij Kray).

*IKIP material*. KUNASHIR: 1 ♂, 25 VIII 1996, A. Lelej leg. PARAMUSHIR: 3 ♀♀ [PA97MO-006C]; 1 ♂ [PA97MO-020A]. SHUMSHU: 1 ♀ [SU97MO-

013F].

*Non-IKIP material*. KUNASHIR: 2 ♂♂, 4 ♀♀, 16–20 VIII 1993 (no other data).

*Distribution*. Japan (Honshu), Kuril Archipelago (Kunashir, Paramushir, Shumshu), Southern Ussuri Province, Primorskij Kray.

*Comments*. New record from the Kuril Archipelago (Kunashir, Paramushir, Shumshu).

**\**Philonthus (Philonthus) cf. azabuensis* Dvořák**

*IKIP material*. URUP: 1 ♀ [UR95MO-008].

*Comments*. This species is most similar to *P. azabuensis*, however, it may be an undescribed species.

***Philonthus (Philonthus) caeruleipennis* Mannerheim**

*Philonthus caeruleipennis* Mannerheim, 1830, Mem. Acad. Sci. St. Petersburg. I: 441.

*Philonthus caeruleipennis*: Schillhammer, 1998, Koleopt. Runds. 68: 105 (Kunashir, Iturup).

*IKIP material*. Not examined.

*Distribution*. Japan (Hokkaido, Honshu, Shikoku, Kyushu), Kuril Archipelago (Kunashir, Iturup), Korea.

*Comments*. This species has not been collected during the IKIP expeditions.

***Philonthus (Philonthus) japonicus* Sharp**

*Philonthus japonicus* Sharp, 1874, Trans. ent. Soc. Lond., p. 40 (original description).

*Philonthus binderi* Roubal, 1910, Verh. zool.-bot. Ges. Wien, 60: 263 (records from Iturup).

*Philonthus japonicus bernhaueri* Roubal: Kôno, 1944, Chishima Gakujutsu Chosa Kenkyutai Hokoku I: 82 (records from Kunashir, Urup, Paramushir).

*IKIP material*. Not examined.

*Distribution*. Japan (Hokkaido, Honshu, Shikoku, Kyushu), Kuril Archipelago (Kunashir, Urup, Paramushir), Sakhalin, Siberia, China, Korea.

*Comments*. This species has not been collected during the IKIP expeditions.

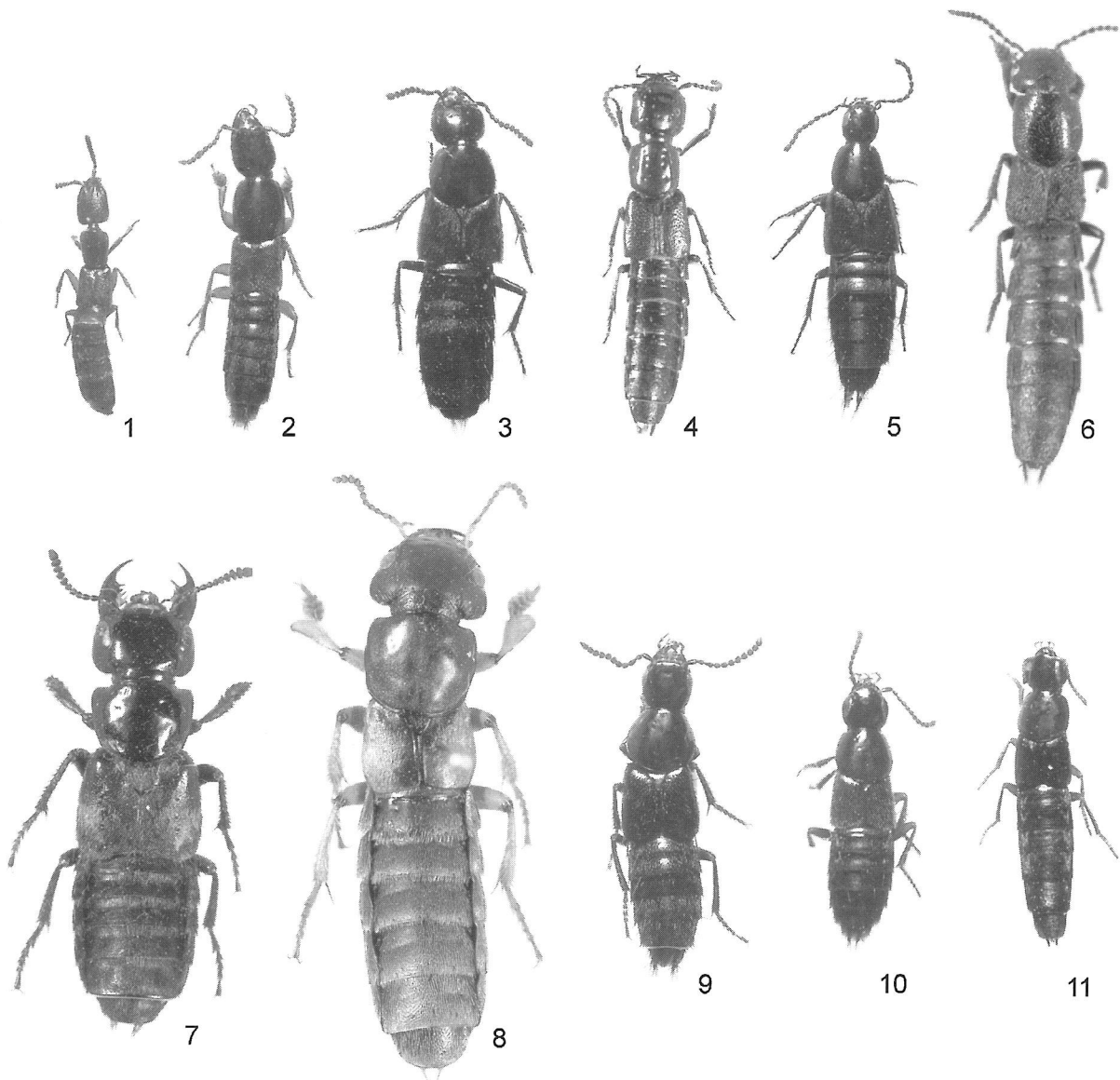
***Philonthus (Philonthus) nudus* Sharp**

*Philonthus nudus* Sharp, 1874, Trans. ent. Soc. Lond., p. 36 (original description).

*Philonthus nudus*: Naomi, Kuranishi, Saito, Maruyama, 2000, Nat. Hist. Res., Special Issue 7: 109 (record from Paramushir).

*Cafius nudus*: Kryvolutskaja, 1973, Entomof. Kuril Archipelago., p. 231 (record from Kuril Archipelago).

*IKIP material*. URUP: 3 exs. [UR95MO-002]; 2 ♀♀ [UR95MO-005]; 2 ♂♂, 3 ♀♀ [UR95MO-008]; 96 exs. [UR95MO-066]; 3 exs. [UR95MO-070]; 2 exs. [UR95PO-028]; 1 ex. [UR95PO-029]; 42 exs. [UR96MO-048B]; 1 ex. [UR96MO-051]; 1 ex.



Figures 1 – 11. Staphylinines collected in the IKIP expeditions. 1. *Medhiama paupera*, 2. *Othius rosti*, 3. *Philonthus tarsalis*, 4. *P. nudus*, 5. *P. wuesthoffi*, 6. *Ocyopus nigroaeneus*, 7. *Creophilus maxillosus*, 8. *Hadropinus fossor*, 9. *Quedius mesomelinus*, 10. *Q. sublimbatus*, 11. *Q. fulvicollis*.

[UR95TWP-049]; 9 exs. [UR95VR-016F]; 5 exs. [UR95VR-017A]; 4 exs. [UR95BKU-014]. CHIRPOI: 24 exs. [CH95MO-048]; 4 exs. [CH95VR-028C]; 2 exs. [CH95BKU-048]. SIMUSHIR: 2 ♂, 8 ♀, 18 exs. [SI95MO-032]; 1 ex. [SI95VR-027C]. USHISHIR: 55 exs. [US95MO-018]; 1 ♂, 1 ♀, 2 exs. [US95MO-021]; 14 exs. [US95BKU-038]; 31 exs. [US95VR-022]. MATUA: 57 exs. [MA96MO-044A]. SHIASHKOTAN: 11 exs. [SA96MO-033D]. KHARIMKOTAN: 112 exs. [KH96MO-022B]. ONEKOTAN: 17 exs. [ON96MO-010B]; 1 ex. [ON96MO-019]. PARAMUSHIR: 10 exs. [PA96MO-001A]; 1 ex. [PA97MO-025C]; 1 ex. [PA97MO-031A]. ALAID: 3 exs. [AL97MO-024A]. SHUMSHU: 32 exs. [SU97MO-010A]; 2 exs. [SU97MO-015C].

*Distribution.* Japan (Hokkaido, Honshu, Shikoku, Kyushu), Kuril Archipelago (Urup, Chirpoi, Simushir, Ushishir, Matua, Shiashkotan, Kharimkotan, Onekotan, Paramushir, Alaid, Shumshu), Sakhalin, Ussuri, Korea, China, North America.

*Comments.* Halophilous species. All specimens were collected under seaweed accumulated on the coastal margin.

New record from Urup, Chirpoi, Simushir, Ushishir, Matua, Shiashkotan, Kharimkotan, Onekotan, Paramushir, Alaid and Shumshu.

**\**Philonthus (Philonthus) oberti* Eppelsheim**

*Philonthus (Philonthus) oberti* Eppelsheim, 1889, Horae Soc. Ent. Rossa., 23: 174 (original description).

*Non-IKIP material.* KUNASHIR: 3 ♂♂, 2 ♀♀, 16–20 VIII 1993 (no other data).

*Distribution.* Japan (Hokkaido, Honshu, Shikoku, Kyushu), Kuril Archipelago (Kunashir), Siberia, Mongolia, China, Korea.

*Comments.* New record from the Kuril Archipelago.

### ***Philonthus (Philonthus) rutiliventris* Sharp**

*Philonthus rutiliventris* Sharp, 1874, Trans. ent. Soc. Lond., p. 47 (original description).

*Philonthus (Bisnius) rutiliventris:* Kuwayama, 1967, Ins. Fau. South. Kuril Isls., p. 136. (records from Kunashir, Shikotan)

*IKIP specimen.* Not examined.

*Distribution.* Japan (Hokkaido, Honshu, Shikoku, Kyushu), Kuril Archipelago (Kunashir, Shikotan), Sakhalin, Siberia, Korea, China.

*Comments.* This species has not been collected during the IKIP expeditions.

### **\**Philonthus (Philonthus) succicola* Thomson**

*Philonthus succicola* Thomson, 1860, Skand. Col. II, p. 157 (original description).

*IKIP material.* PARAMUSHIR: 1 ♂ [PA97MO-006C].

*Distribution.* Kuril Archipelago (Paramushir), Siberia, Tunisia, Europe, Iran, Kazakhstan.

*Comments.* New record from the Kuril Archipelago (Paramushir).

### **\**Philonthus (Philonthus) wuesthoffi* Bernhauer**

*Philonthus wuesthoffi* Bernhauer, 1939, Ent. Nachrbl. 12: 98 (original description).

*IKIP material.* URUP: 1 ♂, 2 ♀♀ [UR95MO-008]; 1 ♂, 3 ♀♀ [UR95MO-009]. PARAMUSHIR: 1 ♂, 2 ♀♀ [PA97MO-006C].

*Distribution.* Japan (Hokkaido, Honshu, Shikoku, Kyushu), Kuril Archipelago (Urup, Paramushir), Sakhalin, Ussuri, Korea, China.

*Comments.* New record from the Kuril Archipelago (Urup, Paramushir).

### ***Phucobius simulator* Sharp**

*Phucobius simulator* Sharp, 1874, Trans. ent. Soc. Lond., p. 35 (original description).

*Phucobius simulator:* Kuwayama, 1967, Ins. Fau. South. Kuril Isls., p. 137. (record from Kunashir).

*IKIP material.* Not examined.

*Distribution.* Japan (Hokkaido, Honshu, Shikoku, Kyushu), Kuril Archipelago (Kunashir), Korea, China.

*Comments.* This species has not been collected during the IKIP expeditions.

### **\**Ocybus (Pseudocybus) nigroaeneus* Sharp**

*Ocybus nigroaeneus* Sharp, 1889, Ann. Mag. nat. Hist., (6) III: 109 (original description).

*IKIP material.* KUNASHIR: 1 ex. [KU95VR-038].

*Distribution.* Japan (Hokkaido, Honshu, Shikoku), Kuril Archipelago (Kunashir), Korea, China, Mongolia.

*Comments.* New record from the Kuril Archipelago (Kunashir)

### ***Creophilus maxillosus* (Linnaeus)**

*Staphylinus maxillosus* Linnaeus, 1758, Syst. Nat., ed. X, p. 421 (original description).

*Staphylinus maxillosus:* Kuwayama, 1967, Ins. Fau. South. Kuril Isls., p. 137 (records from Kunashir, Shikotan, Iturup, Urup).

*Creophilus maxillosus:* Kano, 1933, Bull. biogeogr. Soc. Japan, 4: 98 (record from Alaid).

*Creophilus maxillosus:* Kôno, 1944, Chishima Gakujutsu Chosa Kenkyutai Hokoku, I: 83 (records from Kunashir, Shikotan, Iturup, Urup, Paramushir, Alaid, Shumshu).

*Creophilus maxillosus:* Naomi, Kuranishi, Saito, Maruyama, 2000, Nat. Hist. Res., Special Issue 7: 110 (record from Paramushir).

*IKIP material.* ITURUP: 1 ♂ (on the ship). URUP: 1 ♀ [UR95MO-008]. PARAMUSHIR: 1 ♀ [PA97MO-006C]; 1 ♀ [PA97MO-020A]. SHUMSHU: 10 exs. [SU97MO-010A]; 2 exs. [SU97MO-013F]

*Distribution.* Japan (Hokkaido, Honshu, Shikoku, Kyushu), Kuril Archipelago (Kunashir, Shikotan, Iturup, Urup, Paramushir, Alaid, Shumshu), Sakhalin, Kamchatka, Siberia, Europe, Cosmopolitan.

*Comments.* This species is known to be a predator of maggots, and is often observed on carcasses of vertebrate animals.

### **\**Liusus humeralis* (Matsumura)**

*Staphylinus (Ocybus) humeralis* Matsumura, 1911, J. Agr. Tohoku Imp. Univ., 4: 113.

*Liusus humeralis:* Watanabe, 1983, Kontyû, 51: 217. (Hokkaido; Southern Sakhalin).

*IKIP material.* ITURUP: 1 ex. [IT96NM-020]. URUP: 1 ♂ [UR95MO-002]; 3 ♂♂, 3 ♀♀ [UR95MO-005]; 1 ♀ [UR95MO-007]; 3 exs. [UR95MO-069]; 20 exs. [UR96MO-048B]; 1 ex. [UR96MO-051]; 1 ex. [UR95VR-029B]; 2 exs. [UR95VR-035A]; 1 ex. [UR95PO-028]. SIMUSHIR: 3 ♂♂, 1 ♀ [SI95BKU-046A]; 1 ♀ [SI95MO-032]; 1 ♀ [SI95MO-042]; 1 ♀ [SI95MO-045]; 1 ex. [SI95VR-024B].

*Distribution.* Japan (Hokkaido, Honshu), Kuril Archipelago (Iturup, Urup, Simushir), Southern Sakhalin, Korea, China.

*Comments.* Halophilous species, often collected together with *Philonthus (Philonthus) nudus*.

New record from the Kuril Archipelago (Iturup, Urup, Simushir).

### ***Hadropinus fossor* Sharp**

*Hadropinus fossor* Sharp, 1889, Ann. Mag. nat. Hist., (6) III: 116.

*Hadropinus fossor*: Kuwayama, 1967, Ins. Fau. South. Kuril Isls., p. 137 (record from Kunashir).

**IKIP material.** KUNASHIR: 1 ex. [KU96NM-030]. URUP: 3 ♂♂, 3 ♀♀ [UR95MO-001]; 1 ex. [UR95MO-005]; 3 ♀♀ [UR95MO-058]; 3 exs. [UR95MO-066]; 1 ex. [UR95VR-029A]; 2 exs. [UR95VR-029B]; 4 exs. [UR95YMM-036]; 1 ex. [UR95BKU-014]; 6 exs. [UR95BKU-061]; 1 ex. [UR95PO-028]. CHIRPOI: 3 ♀♀ [CH95MO-048]. SIMUSHIR: 3 ♂♂, 3 ♀♀ [SI95MO-032]; 1 ex. [SI95PO-060]; 1 ex. [SI95BKU-046A].

**Distribution.** Japan (Hokkaido, Honshu), Kuril Archipelago (Kunashir, Urup, Chirpoi, Simushir), Sakhalin, Ussuri, China.

**Comments.** Large and distinct halophilous species, known to be a predator of gammarus and other halophilous insects. New records from Urup, Chirpoi and Simushir.

### ***Quedius (Quedionuchus) armipes* (Sharp)**

*Quedionuchus armipes* Sharp, 1889, Ann. Mag. nat. Hist., (6) III: 34.

*Quedius (Quedionuchus) armipes*: Smetana, 1995, Elytra, 23: 80. (Kunashir Is.)

**IKIP material.** Not examined.

**Distribution.** Japan (Honshu, Kyushu), Kuril Archipelago (Kunashir).

**Comments.** This species has not been collected during the IKIP expeditions.

### **\**Quedius (Microsaurus) mesomelinus* (Marsham)**

*Staphylinus mesomelinus* Marsham, 1802, Ent. Brit.: 510 (original description).

**IKIP material.** URUP: 1 ♀ [UR95MO-064]. MATUA: 3 ♂♂ [MA96MO-042A]

**Distribution.** Kuril Archipelago (Urup, Matua), Europe, Iceland, Greenland, North America, South America, Australia, New Zealand.

**Comments.** New record from Kuril Archipelago (Urup, Matua).

### **\**Quedius (Raphirus) sublimbatus* Mäklin**

*Quedius sublimbatus* Mäklin, 1853, Bull. Soc. Natur. Moscow 26, 3: 190.

**IKIP material.** ONEKOTAN: 3 ♂♂ [ON96MO-

010B]. PARAMUSHIR: 2 ♂♂ [PA97MO-025C].

**Distribution.** Kuril Archipelago (Onekotan, Paramushir), Kamtschatka, Siberia, Mongolia, Europe, North America.

**Comments.** New record from the Kuril Archipelago (Onekotan, Paramushir).

### **\**Quedius (Raphirus) fulvicollis* (Stephens)**

*Raphirus fulvicollis* Stephens, 1833, Ill. Brit. Ent. 5: 244.

**IKIP material.** URUP: 1 ♀ [UR95BKU-059A]. SIMUSHIR: 1 ♂ [SI95MO-011]; 1 ♂ [SI95MO-043]. KETOI: 1 ♂ [KE95MO-036]; 1 ♂ [KE95VR-025B]. RASSHUA: 1 ♂ [RAS95VR-019A]; 1 ♂ [RAS95MO-014]. SHASHIKOTAN: 1 ♂ [SA96MO-033D]. CHIRINKOTAN: 3 ♂♂, 2 ♀♀ [CR96MO-031D]. PARAMUSHIR: 1 ♂ [PA97YK-010].

**Distribution.** Kuril Archipelago (Urup, Simushir, Ketoi, Rasshua, Shashikotan, Chirinkotan, Paramushir), Kamtschatka, Siberia, Europe, Iceland, North America.

**Comments.** New record from the Kuril Archipelago (Urup, Simushir, Ketoi, Rasshua, Shashikotan, Chirinkotan, Paramushir).

## **Species that should be excluded from the fauna of the Kuril Archipelago**

### ***Othius rufipennis* Sharp**

*Othius rufipennis* Sharp, 1874, Trans. ent. Soc. Lond., p. 49.

*Othiellus rufipennis*: Kuwayama, 1967, Ins. Fau. South. Kuril Isls., p.136. (Kunashir Is.)

**Distribution.** Japan (Kyushu), Korea, China.

**Comments.** This species has not been collected in IKIP, and does not occur on Hokkaido. It is confined to Temperate Zones of East Asia. It is possible that Kuwayama's (1967) record is a misidentification of *Othius rosti*.

### ***Liusus hilleri* (Weise)**

*Hadrotes hilleri* Weise, 1877, Deuts. ent. Z., 21: 93.

*Liusus hilleri*: Kuwayama, 1967, Ins. Fau. South. Kuril Isls., p. 137. (Kunashir Is.)

*Liusus hilleri*: Kryvolutskaja, 1973, Entomof. Kuril Iss., p. 231. (Kuril Islands)

**Distribution.** Japan (Hokkaido, Honshu, Kyushu), Korea. Questionable: Kuril Iss. (Kunashir Is.) .

**Comments.** This species has not been collected during IKIP. Despite examining a number of specimens of the genus *Liusus*, no specimen belonging to the *L. hilleri* was found in the present study. The previous records of this species from Kuril Islands (Kuwayama, 1967; Kryvolutskaja, 1973) are most

probably misidentification of *Liusus humeralis*.

## Acknowledgements

We wish to express our cordial thanks to Prof. Y. Watanabe of the Tokyo University of Agriculture, Kanagawa, for his kind advice. This work was supported in part by the Japan Society for the Promotion of Science, grant number BSAR-401, Kunio Amaoka, principal investigator; by the Biological Sciences Directorate (Biotic Surveys and Inventories Program) and the International Program Division of the U.S. National Science Foundation, grant numbers DEB-9400821, DEB-9505031, DEB-0071655, and DEB-0202175, Theodore W. Pietsch, principal investigator; and by the Russian Federal Science and Technology Program for "Biological Diversity", state contract number 504-1(00)- II , Viktor V. Bogatov, principal investigator.

## References

- ASSING, V., 1999. A revision of *Othius* Stephens, 1829. VII. The species of the eastern palaearctic region east of the Himalayas (Coleoptera: Staphylinidae). *Beitr. Ent.* 49, 3–96.
- COIFFAIT, H., 1974. Staphylinides récoltés en Ussuri (Asie Orientale). *Nouv. Rev. Ent.* 4, 197–204.
- COIFFAIT, H., 1975. Staphylinides nouveaux d'U.R.S.S. récoltés par S. M. Khmzorian-lablokoff. *Nouv. Rev. Ent.* 5, 31–37.
- COIFFAIT, H., 1978. Coléoptères Staphylinidae de la région paléarctique occidentale III. Sous famille Staphylininae, Tribu Quediini. Sous famille Paederinae, Tribu Pinophilini. *Suppl. Nouv. Rev. Ent.* Tome VIII, fasc. 4. Toulouse, 364 pp.
- KANO, T., 1933. Coleopterous insects from the northern Kuriles, with some considerations on the insect fauna of the Kuril Archipelago. *Bull. biogeogr. Soc. Japan* 4, 91–121. (In Japanese.)
- KÔNO, H., 1944. Die Käfer-Fauna der Nord-Kurilen (XI. Beitrag zur Kenntnis der Käferfauna der Kurilen). *Report of the Scientific Expedition of the Kuril Archipelago, Tokyo*, I, 74–92. (In Japanese.)
- KIRSCHENBLATT, J. D., 1938. On some Far Eastern staphylinid beetles. *Trudy Gidrobiologicheskoy Ekspeditsii (Zool. Ins. Akad. Nauk SSSR 1934 g. na Yaponskoye More)* I, 527–536. (In Russian with English summary.)
- KORGE, H., 1961. Die mit *Quedius mesonelinus* Marsh. verwandten Arten Europas (Col. Staphylinidae). *Ent. Bl. Biol. Syst. Käfer* 57, 43–53.
- KRYVOLUTSKAJA, G. O., 1973. *Entomofauna of the Kuril Islands, principal features and origin*. Leningrad: Nauka. (In Russian with English summary.)
- KUWAYANA, S., 1967. *Insect Fauna of the Southern Kurile Islands*. Sapporo: Hokunôkai. (In Japanese.)
- ROUBAL, J., 1910. *Philonthus binderi* spec. nov. *Verh. zool.-bot. Ges. Wien* 60, 263–264.
- SCHILLHAMMER, H., 1998. Revision of the East Palaearctic and Oriental species of *Philonthus* Stephens - Part 1. The *cyanipennis* group (Coleoptera: Staphylinidae, Staphylininae). *Koleopt. Rdsch.* 68, 101–118.
- SCHILLHAMMER, H., 2000. Revision of the East Palaearctic and Oriental species of *Philonthus* Stephens - Part 3. The *politus* complex (Coleoptera: Staphylinidae, Staphylininae). *Koleopt. Rdsch.* 70, 113–176.
- SMETANA, A., 1971. Revision of the tribe Quediini of America north of Mexico (Coleoptera: Staphylinidae). *Mem. ent. Soc. Can.* No. 79, VI + 303 pp.
- SMETANA, A., 1976. New species and remarks on Siberian *Quedius* (Coleoptera: Staphylinidae). *Notul. ent.* 56, 21–28.
- SMETANA, A., 1982. Remarks on some Xantholininae from the Kuril Archipelago (Coleoptera, Staphylinidae). *Coleopt. Bull.* 36, 309–313.
- SMETANA, A., 1995. Taxonomic and faunistic contributions to the knowledge of palaearctic Quediina (Coleoptera, Staphylinidae). *Elytra, Tokyo* 23, 77–88.
- WATANABE, Y., 1983. The Japanese species of the Genus *Liusus* Sharp (Coleoptera, Staphylininae). *Kontyû* 51, 214–220.

## Appendix

### KUNASHIR

- KU97NM-004: 44°00.34' N, 145°40.99' E, N. Minakawa, 7/27/1997, 70 m upstream from goby "hot spring", soil and litter under Fuki and Sasa, riparian VEG along small stream (1-1.5 m in width); dense forest w/ large fir, hand picked
- KU96NM-030: N. Minakawa, 8/24/1996, north side of Yuzhno-kurilsky cape, under decaying seaweed on the sandy beach, large rocks on the beach
- KU95VR-038: 44°03.13' N, 145°44.68' E, V. Roth, 9/1/1995, environs of lake Aliger and Lagunnoye, in moss under reeds and grasses in marshland, by hand

### ITURUP

- IT97NM-015: 45°20.04' N, 147°59.80' E, N. Minakawa, 7/30/1997, eastern side of Chirip peninsula; inland coastal margin of Kondrtvnaya Bay, in litter 1 m from bank of creek running into Bay; stream dried up 300 m upstream from shore; 0.5-1 m wide; pool and riffles; litter includes Fuki, Sasa, alder, willow, hand picked
- IT96NM-020: 45°19.79' N, 147°59.75' E, N. Minakawa, 8/19/1996, inland coastal margin of Konservnaya Bay, under rocks and seaweed along coastline, hand picked

### URUP

- UR95MO-001: 45°51.49' N, 149°46.95' E, M. Ôhara, 8/4/1995, inland coastal margin of Otkryti Bay; environs of Shabalina river, under logs and rocks along shoreline, by hand with aspirator
- UR95MO-002: 45°51.49' N, 149°46.95' E, M. Ôhara, 8/4/1995, inland coastal margin of Otkryti Bay; environs of Shabalina river, under logs and rocks along shoreline, by hand with aspirator
- UR95MO-005: 45°51.04' N, 149°46.12' E, M. Ôhara, 8/5/1995, Inland coastal margin of Otkryti Bay; Environs of Shabalina river valley, under seaweeds, kelp, and rocks along shoreline, by hand with aspirator
- UR95MO-006: 46°05.38' N, 150°08.33' E, M. Ôhara, 8/6/1995, 0930-1600, Inland coastal margin of Natalie Bay; Environs of Vesolaya river mouth, under logs and rocks along river banks and coastal shoreline, by hand with aspirator, sweep net
- UR95MO-007: 46°05.38' N, 150°08.33' E, M. Ôhara, 8/7/1995, 0900-1300, Inland coastal margin of Natalie Bay; Environs of Obzhitaya river valley, sandy bars along the river and in adjacent riparian forest, pit fall traps, bait trap, aspirator
- UR95MO-008: 46°12.84' N, 150°18.69' E, M. Ôhara, 8/8/1995, 1300-1830, Inland coastal margin of Novo-kurilskaya Bay; Environs of Bystraya river valley, under logs in grassland with adjacent forest, pit fall traps, bait trap, aspirator
- UR95MO-009: 46°12.84' N, 150°18.69' E, M. Ôhara, 8/9/1995, 0900-1130, Inland coastal margin of Novo-kurilskaya Bay; Environs of Bystraya river valley, under logs; grassland; forest next to wetland, sweep net
- UR95MO-058: 46°01.00' N, 149°58.24' E, M. Ôhara, 8/25/1995, inland coastal margin of Smuglyi Bay; environs of Rybnaya river mouth, under rocks and logs along coastline, by hand with aspirator
- UR95MO-064: 45°34.67' N, 149°24.33' E, M. Ôhara, 8/27/1995, Inland coastal margin of Katayeva Bay; Environs of Van-der-linda point Lighthouse, under faces of cows and pigs, by hand with aspirator
- UR95MO-066: 45°48.14' N, 149°54.44' E, M. Ôhara, 8/28/1995, Inland coastal margin of Barkhatny Bay; Environs of Lopukhovaya river valley, under seaweeds and logs along sandy coastline, by hand with aspirator
- UR95MO-069: 45°56.63' N, 150°10.52' E, M. Ôhara, 8/29/1995, Inland coastal margin of Negodnaya Bay; Environs of Vestrechnyi river valley, under rocks at base of cliff, by hand with aspirator
- UR95MO-070: 45°56.63' N, 150°10.52' E, M. Ôhara, 8/29/1995, 1430-1630, Inland coastal margin of Negodnaya Bay; Environs of Vestrechnyi river valley, under seaweeds along sandy coastline, by hand with aspirator
- UR96MO-048B: 45°35.20' N, 149°32.30' E, M. Ôhara, 8/20/1996, Ukromnaya Bay, under stone and piece of wood on shore, hand picked, forceps
- UR96MO-051: 45°38.81' N, 149°27.87' E, M. Ôhara, 8/21/1996, inland from Tetyava Bay, under seaweed, by hand and forceps
- UR95VR-016F: 46°05.85' N, 150°09.91' E, V. Roth, 8/7/1995, inland coastal margin of Natalie Bay; environs of Obzhitaya river, along sandy beach, by hand and forceps
- UR95VR-017A: 46°12.84' N, 150°19.04' E, V. Roth, 8/9/1995, inland coastal margin of Novokurilskaya Bay; environs of Bystraya river, along sandy coast, by hand and forceps
- UR95VR-029A: 46°01.15' N, 150°58.42' E, V. Roth, 8/24/1995, inland coastal margin of Smuglyi Bay; environs of Rybnaya river, traps set in vegetation around a logpile, 30 can traps
- UR95VR-029B: 46°01.15' N, 150°58.42' E, V. Roth, 8/24/1995, inland coastal margin of Smuglyi Bay; environs of Rybnaya river, riparian vegetation of petasites, by hand and forceps
- UR95VR-035A: 45°56.60' N, 150°10.44' E, V. Roth, 8/29/1995, inland coastal margin of Negodnaya Bay; environs of Vstrechnyi river, by hand and forceps
- UR95PO-028: 46°05.75' N, 150°09.84' E, N. Minakawa, 8/7/1995, inland coastal margin of Natalie Bay; environs of Obzhitaya river; at rockface near river mouth at east end of cove, picked from wall of rockface wet with fresh water, by hand and forceps
- UR95PO-029: 46°05.75' N, 150°09.84' E, N. Minakawa, 8/7/1995, inland coastal margin of Natalie Bay; environs of Obzhitaya river; along beach near river mouth, picked from under woody debris along sandy beach, by hand and forceps
- UR95TWP-049: 45°47.71' N, 49°54.33' E, T.W. Pietsch, 8/28/1995, inland coastal margin of Barkhatny Bay; environs of Lopukhovaya river, under dead grass mats, under woody debris along riparian margin, among tall broad-leafed grass and yellow-flowering herbs, aspirator & sifting by hand
- UR95BKU-014: 45°51.51' N, 149°46.99' E, B.K. Urbain, 8/4/1995, inland coastal margin of Otkryti Bay; environs of Shabalina river mouth, under logs (sand temperature = 15°C) along coastal beach with fine sand, by hand



UR95BKU-059A: 45°35.00' N, 149°24.50' E, B.K. Urbain, 8/26/1995, inland coastal margin of Katayeva Bay, under rocks, in vegetative litter, from lower vegetative layer, and in sphagnum moss of coastal slope meadow dominated by flowering herbs and short grasses with some patches of mosses, by hand with aspirator

UR95BKU-061: 45°47.76' N, 149°54.35' E, B.K. Urbain, 8/28/1995, inland coastal margin of Barkhatny Bay; environs of Lopukhovaya river, under logs at vegetated margin of coast, by hand with aspirator

UR95YMM-036: 46°05.85' N, 150°09.91' E, Y.M. Marusik, 8/7/1995, inland coastal margin of Natalie Bay; environs of Obzhitaya river mouth, in matted herb (*Artemisia* sp.) along vegetated, sandy beach, by hand with aspirator

#### **CHIRPOI**

CH95MO-048: 46°32.53' N, 150°54.22' E, M. Ôhara, 8/23/1995, Inland coastal margin of Peschanaya Bay, under seaweeds along sandy coastline, by hand with aspirator

CH95VR-028C: 46°32.28' N, 150°53.62' E, V. Roth, 8/23/1995, inland coastal margin of Peschanaya Bay, vegetation thick with peas and grass, by hand and forceps

CH95BKU-048: 46°32.54' N, 150°54.18' E, B.K. Urbain, 8/23/1995, inland coastal margin of Peschanaya Bay; within sandy alcove cut out from upper beach meadow, under logs and IN sand from unvegetated sandy alcove, by hand with aspirator

#### **BRAT-CHIRPOEV**

BC97MO-039B: 46°28.28' N, 150°47'88' E, M. Ôhara, 8/20/1997, inland from near cape Garovnikova and lev rock, under stones, hand picked

#### **SIMUSHIR**

SI95MO-011: 46°51.36' N, 151°47.19' E, M. Ôhara, 8/11/1995, Inland coastal margin of Kitoboynaya Bay, coastal grassland on the hills close to shoreline, by hand with aspirator, sweep net

SI95MO-032: 47°05.14' N, 152°07.51' E, M. Ôhara, 8/18/1995, inland coastal margin of Malaya Bay, under dry seaweeds along sandy coastline, by hand with aspirator

SI95MO-042: 46°59.05' N, 152°01.30' E, M. Ôhara, 8/22/1995, inland coastal margin of Srednaya Bay, vegetation of *Konkenya peplodes*, *Stellaria aquatica*, *Senecio pseudo arnica* along upper sandy coastline, by hand with aspirator

SI95MO-045: 46°59.16' N, 152°01.21' E, M. Ôhara, 8/22/1995, Inland coastal margin of Srednaya Bay, under seaweeds along sandy coastline, by hand with aspirator

SI95VR-024B: 47°05.36' N, 152°08.00' E, V. Roth, 8/18/1995, inland coastal margin of Malaya Bay, from intertidal zone of vegetated margin along coast, by hand and forcep

SI95VR-027C: 46°58.98' N, 152°01.28' E, V. Roth, 8/22/1995, inland coastal margin of Srednaya Bay under boards along coarse grained sandy coast, from intertidal to edge of vegetated margin, by hand and forcep

SI95BKU-046A: 46°58.92' N, 152°01.11' E, B.K. Urbain, 8/22/1995, inland coastal margin of Srednaya Bay; along coast, under logs and within coarse sand from upper beach zone vegetated with sparse, low-lying, sand specific plants, by hand with aspirator

SI95PO-060: 46°51' N, 151°47' E, N. Minakawa, 8/11/1995, inland coastal margin of Kitoboynaya Bay, under log on coast, by hand

#### **KETOI**

KE95MO-036: 47°18.02' N, 152°29.90' E, M. Ôhara, 8/19/1995, inland coastal margin in the environs of Stochnyi river, from soil under a stand of dwarf pine (*Pinus pumila*) within a grassland meadow, by hand with aspirator

KE95VR-025B: 47°17.93' N, 152°30.07' E, V. Roth, 8/19/1995, inland coastal margin in the environs of Stochnyi river, meadow on top of cliff with vegetation of grasses, herbs and mosses with some birch and pine, sifter

#### **USHISHIR**

US95MO-018: 47°30.55' N, 152°48.99' E, M. Ôhara, 8/14/1995, Yankicha Island; inland environs of Kraternaya Bay, under large rocks along sandy beach, by hand

US95MO-021: 47°30.54' N, 152°49.00' E, M. Ôhara, 8/14/1995, Yankicha Island; inland environs of Kraternaya Bay, under decaying seabird carcass, by hand with aspirator

US95BKU-038: 47°30.63' N, 152°48.82' E, B.K. Urbain, 8/14/1995, Yankicha Island; inland environs of Kraternaya Bay, under birds carrion, logs and other debris along sandy shoreline, by hand with aspirator

US95VR-022: 47°30.55' N, 152°48.98' E, V. Roth, 8/14/1995, Yankicha Island; inland environs of Kraternaya Bay, along sandy beach, under debris, by hand and forceps

#### **RASSHUA**

RAS95MO-014: 47°43.19' N, 152°58.80' E, M. Ôhara, 8/13/1995, inland from southwest section of island near arches, along rocky shoreline, by hand with aspirator

RAS95VR-019A: 47°43.15' N, 152°58.27' E, V. Roth, 8/12/1995, inland from southwest section of island near the arches, in cavity under rotting wood, by hand and forceps

#### **MATUA**

MA96MO-042A: 48°04.00' N, 153°15.62' E, M. Ôhara, 8/14/1996, Inland from Dvoynaya Bay, under cow dung, by hand pickup with forceps

MA96MO-044A: 48°02.46' N, 153°13.65' E, M. Ôhara, 8/15/1996, Ainu Bay, under log and stone on shore

**SHIASHKOTAN**

SA96MO-033D: 48°46.84' N, 154°02.23' E, M. Ôhara, 8/11/1996, inland from Zakatnaya Bay, under pieces of wood on beach, hand picked

**CHIRINKOTAN**

CR96MO-031D: 48°59.29' N, 153°28.42' E, M. Ôhara, 8/10/1996, small inlet just to the east of Cape Ptichy (northern corner of Island), under pebbles on sea shore, hand picked

**KHARIMKOTAN**

KH96MO-022B: 49°10.51' N, 154°27.59' E, M. Ôhara, 8/8/1996, Severgina Bay, northern end of Island, under stones and wood pieces on sandy beach, hand picked

**ONEKOTAN**

ON96MO-010B: 49°36.71' N, 154°48.86' E, M. Ôhara, 8/4/1996, Nemo Bay; northern part of Island, inland 50 m from river mouth, under stones and wood pieces, hand picked

ON96MO-019: 49°22.91' N, 154°49.16' E, M. Ôhara, 8/7/1997, Mussel Bay, under seaweed and stone on sea shore, hand picked

**ALAUD**

AL97MO-024A: 50°49.68' N, 155°40.35' E, M. Ôhara, 8/12/1997, Inland from Alaidskaya Bay; near abandoned settlement of Atlasova, under seaweed and wood, hand picked

**PARAMUSHIR**

PA96MO-001A: 50°37.73' N, 156°08.21' E, M. Ôhara, 8/1/1996, environs of Utesny reiver, Laminalia, swept, hand picked

PA97MO-006C: 50°40.35' N, 156°08.47' E, M. Ôhara, 8/4/1997, near center of town of Severo-kurilsk, under cow dung hand picked

PA97MO-020A: 50°37.73' N, 156°08.05' E, M. Ôhara, 8/11/1997, inland from Utyosnaya Bay; environs of Utyosnaya river valley, under stones, hand picked

PA97MO-025C: 50°22.50' N, 155°35.50' E, M. Ôhara, 8/13/1997, inland from Shelekhova Bay; near Shelekhova river and Shelekhovo settlement, under stones and wood, hand picked

PA97MO-031A: 50°01.19' N, 155°24.00' E, M. Ôhara, 8/16/1997, inland from western base of Vasil'yeva peninsula, under seaweed on shore, hand picked

PA97YK-010: 50°44.22' N, 156°08.61' E, Y. Kuwahara, 8/4/1997, northeast corner of island; environs of unnamed lake fed by Savushkina river; near Putyatino settlement on coast, BOG, hand picked

**SHUMSHU**

SU97MO-013F: 50°46.24' N, 156°15.57' E, M. Ôhara, 8/9/1997, inland from eastern side of cape Chibuynyi; environs of Bol'shoie lake, under sea bird carcass, hand picked

SU97MO-010A: 50°49.19' N, 156°30.07' E, M. Ôhara, 8/8/1997, about 2 Kilometers south of Pochtareva cape; Environs of first river north of Koshkina river, on shore; under seaweed, hand picked

SU97MO-015C: 50°39.51' N, 156°25.32' E, M. Ôhara, 8/10/1997, inland from Babushkina Bay; environs of Luzhnanka river, under seaweed, hand picked