



Title	Stimulation with the <i>Aureobasidium pullulans</i> -produced β -glucan effectively induces interferon stimulated genes in macrophage-like cell lines
Author(s)	Muramatsu, Daisuke; Kawata, Koji; Aoki, Shiho; Uchiyama, Hirofumi; Okabe, Mitsuyasu; Miyazaki, Tadaaki; Kida, Hiroshi; Iwai, Atsushi
Citation	Scientific Reports, 4, 4777 https://doi.org/10.1038/srep04777
Issue Date	2014-04-24
Doc URL	http://hdl.handle.net/2115/63432
Rights(URL)	https://creativecommons.org/licenses/by-nc-nd/3.0/
Type	article
Additional Information	There are other files related to this item in HUSCAP. Check the above URL.
File Information	srep04777-s1.pdf (Supplementary Information)



[Instructions for use](#)

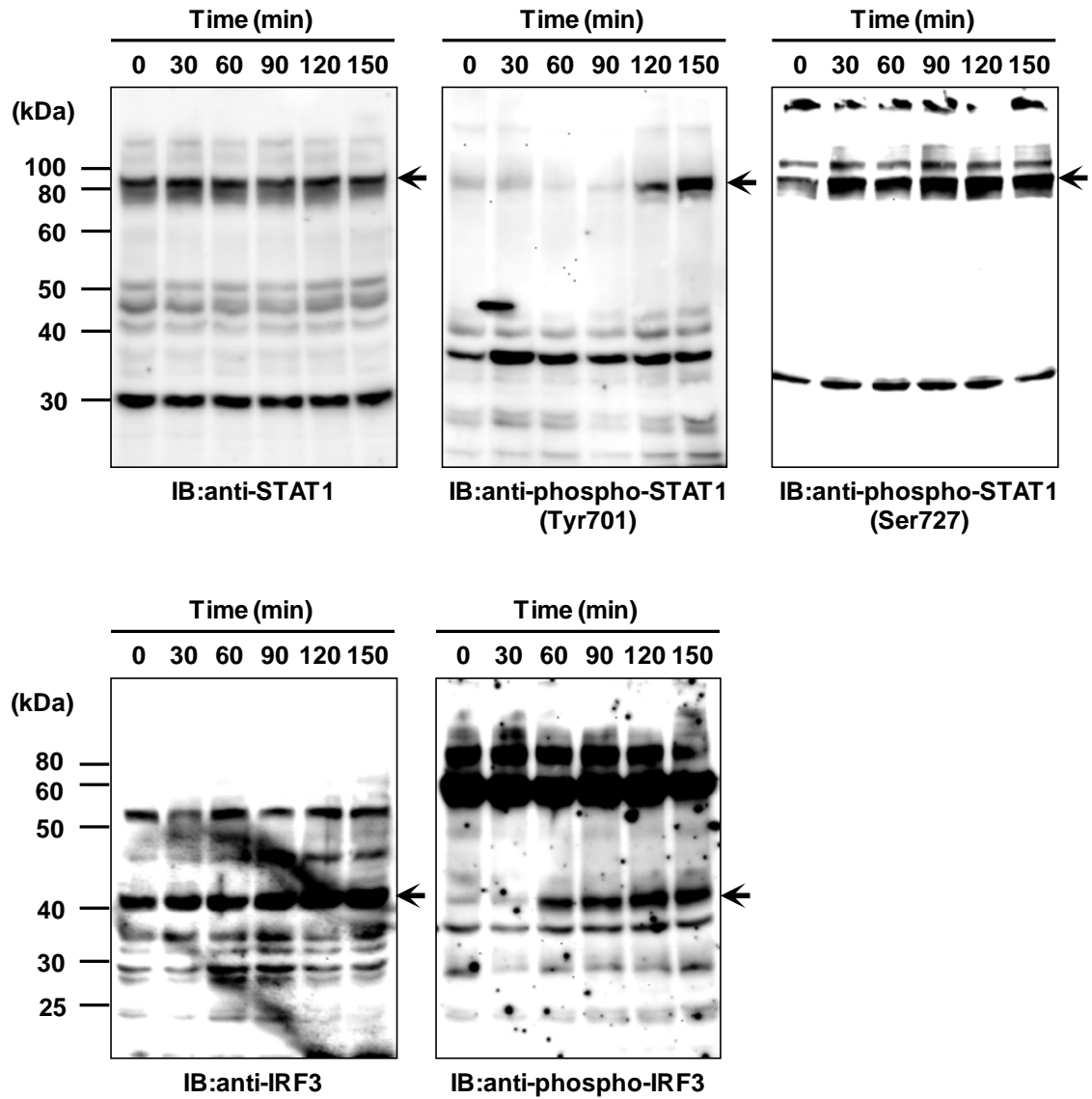
Supplementary Information

Stimulation with the *Aureobasidium pullulans*-produced β -glucan effectively induces interferon stimulated genes in macrophage-like cell lines.

Daisuke Muramatsu ¹, Koji Kawata ^{1, 2}, Shiho Aoki ¹, Hirofumi Uchiyama ², Mitsuyasu Okabe ², Tadaaki Miyazaki ³, Hiroshi Kida ⁴⁻⁶, and Atsushi Iwai ^{1, 2*}

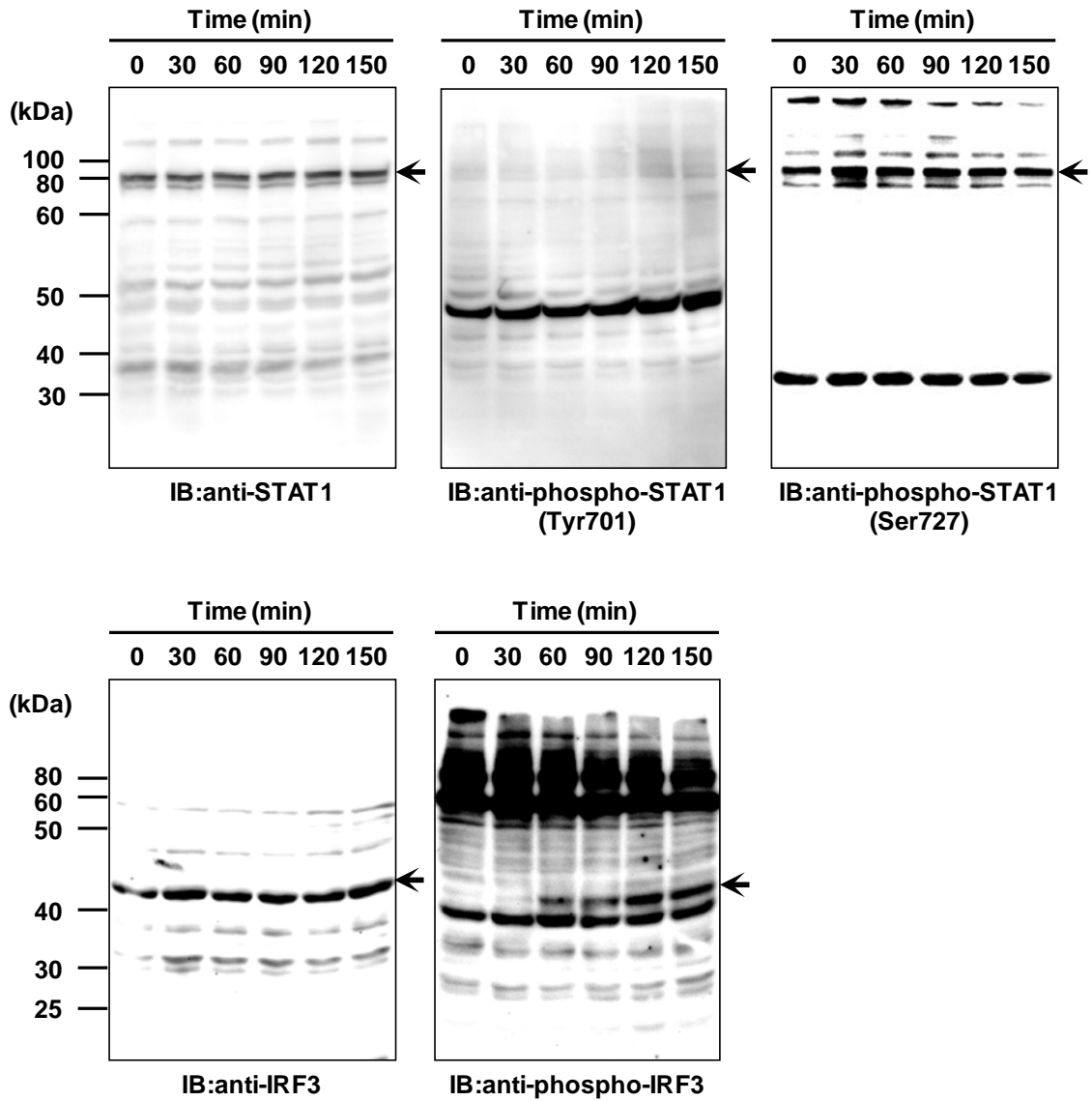
¹ Aureo Science Co., Ltd., Hokudai Business Spring, North 21, West 12, Kita-ku, Sapporo, Hokkaido, 001-0021 Japan; ² Aureo Co., Ltd., 54-1 Kazusakoito, Kimitsu, Chiba, 292-1149 Japan; ³ Department of Probiotics Immunology, Institute for Genetic Medicine, Hokkaido University, North 15, West 7, Kita-ku, Sapporo, Hokkaido, 060-0815 Japan; ⁴ Laboratory of Microbiology, Department of Disease Control, Graduate School of Veterinary Medicine, Hokkaido University, North 18, West 9, Kita-ku, Sapporo, Hokkaido, 060-0818, Japan; ⁵ Hokkaido University Research Center for Zoonosis Control, North 20, West 10, Kita-ku, Sapporo, Hokkaido, 001-0020, Japan; ⁶ OIE Reference Laboratory for Highly Pathogenic Avian Influenza, Sapporo, Hokkaido, Japan.

* Correspondence should be addressed to Atsushi Iwai, Aureo Science Co., Ltd., Hokudai Business Spring, North 21, West 12, Kita-ku, Sapporo, Hokkaido, 001-0021, Japan; Phone: +81-11-757-1316; Fax: +81-11-738-1317; E-Mail: iwai-atsushi@aureo.co.jp



Supplementary Figure S1: Full length pictures of the cropped blots presented in Figure 5A

Arrowheads indicate the bands corresponding to STAT1 and IRF3.



Supplementary Figure S2: Full length pictures of the cropped blots presented in Figure 5B

Arrowheads indicate the bands corresponding to STAT1 and IRF3.