



Title	二新種を含む故高橋定衛氏採集蜘蛛
Author(s)	齋藤, 三郎
Citation	札幌博物学会会報, 14(4), 249-254
Issue Date	1936-12-30
Doc URL	http://hdl.handle.net/2115/64196
Type	article
File Information	Vol.14No.4_006.pdf



[Instructions for use](#)

The Spiders Collected by the Late Mr. Sadae TAKAHASHI, with Descriptions of Two New Species¹⁾

By

Saburo SAITO

(齋藤三郎)

With two text-figures

The *Araneina* in the collection of the late Mr. Sadae TAKAHASHI was examined by the writer at the kind request of Dr. Yaichiro OKADA, Dr. Taku KOMAI and the younger brother of the deceased, Mr. Shin TAKAHASHI. The specimens are about thirty in number and identified as the following eight known and two new species.

1. *Heteropoda venatoria* (LINNAEUS) No. 602, 609

One male and two females. Male and one female collected from the South Sea Islands on December, 1936 represented by the cast-off skin of the part of cephalothorax. Another female without label shows the following dimensions (cm):—total length, 2.50; length of abdomen, 1.35; leg I, 4.70; leg II, 5.15; leg III, 4.20; leg IV, 4.85.

2. *Thomisus onustoides* BÖS. et STRAND No. 610

A single female specimen collected on December 31, 1930 at the residential land in front of the primary school of Kwarenko(花蓮港), Formosa. The measurements(cm) are as follows:—total length, 0.85; length of abdomen, 0.45; leg I, 1.20; leg II, 1.20; leg III, 0.75; leg IV, 0.85.

3. *Plexippus Paykulli* (AUDOUIN) No. 608

Only one female specimen collected on August 22–25. The locality missed. This cosmopolitan species common to the Old and New Worlds. The measurements(cm) are as follows:—total length, 0.90; length of abdomen, 0.60; leg I, 0.90; leg II, 0.85; leg III, 1.00; leg IV, 1.05.

¹⁾ A part of the Memorial Edition for the late Mr. Sadae TAKAHASHI.
Trans. Sapporo Nat. Hist. Soc., Vol. XIV, Pt. 4, 1936.

4. *Nephila maculata* (FABRICIUS) No. 598, 599

Four adult females collected at Formosa. According to the note of the collector this spider lives specially at the damp region in the mountain.

No.	Sex	Locality	Date	Measurements (cm)					
				Total length	Length of abdomen	Leg I	Leg II	Leg III	Leg IV
598	♀	Formosa	August, 1934	4.30	3.05	9.35	7.95	5.10	8.45
598	"	"	"	4.20	3.05	8.90	7.30	4.75	7.45
599	"	On the way to Botansha (ボタン社) from Shijuke (四重溪)	March 3, 1930	3.85	2.75	9.00	7.38	4.75	7.75
599	"	"	"	4.58	3.10	9.67	7.60	5.05	8.20

5. *Argiope amoena* L. KOCH No. 607

An adult female specimen without locality collected on July, 1929. The measurements (cm) are as follows:—total length, 1.45; length of abdomen, 0.95; leg I, 3.30; leg II, 3.20; leg III, 2.05; leg IV, 3.15.

6. *Araneus sia* STRAND No. 608

A single subadult male specimen judging from the black characteristic markings of the abdomen. Without locality. Collected on August 22–25. The measurements (cm) are as follows:—total length, 0.85; length of abdomen, 0.50; leg I, 1.10; leg II, 1.10; leg III, 0.70; leg IV, 1.05.

7. *Araneus ventricosus* L. KOCH No. 605

One subadult female collected on July, 1932 at Taihoku. The measurements (cm) are as follows:—total length, 2.60; length of abdomen, 1.65; leg I, 3.80; leg II, 3.65; leg III, 2.65; leg IV, 3.65.

8. *Atypus Karschi* DÖNITZ No. 611

A single female collected on August, 1930 at Kwarenko. The measurements (cm) are as follows:—total length, 1.20; length of abdomen, 0.55; leg I, 1.00; leg II, 0.80; leg III, 0.75; leg IV, 1.00.

9. *Lycosa Takahashii* sp. nov. No. 604

Jap. name. *Sunawara-Dokugumo*.

(Fig. A)

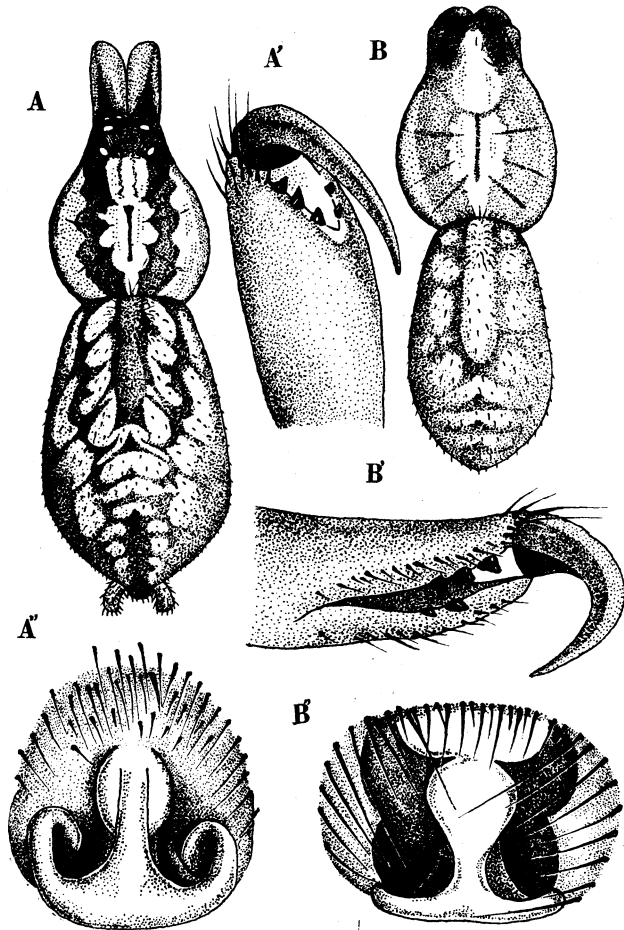
Two females collected on August 21, 1930 at the sea-shore of Kwarenko.

Cephalothorax convex; caput high, lowers posteriorly. Cervical groove indefinite and median groove obvious. Anterior row of eyes almost straight and somewhat shorter than median row. Posterior median eyes largest, anterior lateral eyes smallest and posterior lateral eyes larger than anterior median eyes. Eye-ratio 5:4:3:1. Four anterior eyes nearly equidistant, separated from each other by the diameter of its lateral eye. Distance of two posterior median eyes somewhat larger than the diameter. Posterior lateral eyes separated from each other by five times, from median eyes by two times their diameters. Clypeus nearly equal to the diameter of anterior median eye. Chelicerae with black long hairs, comparatively slender and furnished with three teeth at lower margin. Labium as long as wide, pointed bluntly in front and rounded behind. Maxillae wider in front than at base in ratio 3:2; both outer and anterior margins diverging slightly and both inner margins converging strongly. Sternum egg-shaped, convex, with convex anterior margin and posterior blunt end; the widest part between the second legs equals to two-thirds of length, sparsely clothed with long black hairs. Each leg furnished with three pairs of spine at the under side of femur and tibia respectively.

Colour in alcohol: Cephalothorax dull yellow, with black caput and sepial marginal, median lines and submarginal band. Chelicerae brown, furnished with black teeth and fangs. Labium and maxilla dull yellow, discoloured to light yellow at anterior parts. Sternum darker than the maxilla. Legs blight yellow, annulated with sepial bands as follows: trochanter with 1, femur with 2, patella with 1, tibia with 2, metatarsus with 3. Abdomen beneath bright yellow, and above yellow ornamented with light black markings (Fig. A). The measurements (cm) are as follows:—

Sex	Total length	Length of abdomen	Leg I	Leg II	Leg III	Leg IV
♀	1.15	0.65	1.70	1.70	1.70	2.05
♀ (immature)	0.90	0.55	1.15	1.15	1.15	1.45

Remarks: This species is closely allied to *Lycosa dilatata* O. P. CAMBRIDGE, but it is easily distinguished by the following distinct characteristics:—the stem of the central process of epigynum is short and the cross-piece is large (Fig. A''). The venter is pale yellow and there is no any markings, while *L. dilatata*, according to the original descriptions, has a narrow central-dusky band running from the epigynum to the spinnerets, and the central process of epigynum is much longer than the breadth of the crosspiece.



Lycosa Takahashii
 A : Female removed the legs and palpi.
 A' : Right chelicera from beneath.
 A'' : Epigynum.

Lycosa formosana
 B : Female removed the legs and palpi.
 B' : Right chelicera from beneath.
 B'' : Epigynum.

[Original]

10. *Lycosa formosana* sp. nov. No. 600

Jap. name. *Akane-Dokugumo*.

(Fig. B)

Three females collected on November 4, 1930 at Kwarenko. Cephalothorax circular with high caput: cervical groove very faint, three pairs of radial, and a median grooves obviously distinguishable. Eight eyes in three rows black; posterior median eyes most largest, anterior lateral eyes smallest, and posterior lateral ones larger than anterior median ones: their ratio in diameter, 2:3:6:8;

four anterior eyes equidistant, separating from each other by the radius of its lateral eye; quadrangle of four posterior eyes trapezoid, height and anterior margin of which equal to three times and posterior margin to four times the diameter of posterior median eye. Clypeus narrow, nearly equal with radius of anterior lateral eye. Chelicerae strong, furnishing with long brown hairs and armed with three teeth at lower margin. Labium triangular with obtuse vertex and rounded base and furnished with black long hairs at vertex. Maxillae hairly, the length attaining three times height of labium; outer margins of both maxillae nearly parallel, inner margin converging and anterior margins diverging. Sternum convex, nearly circular and furnished thinly with short brown hairs. Each leg armed with spines as follows:—underside of tibia and metatarsus with 3 pairs respectively, and above 4 at femur, 3 at patella, 4 at tibia, 3 pairs at metatarsus. Abdomen oblong oval and nearly equal with the cephalothorax in length.

Colour in alcohol: Cephalothorax bright yellowish brown with deep brown median groove and pale black slender marginal and broad submarginal bands. Chelicera, labium, maxilla and sternum yellow, but sternum somewhat darker than others, and fangs deep brown. Legs beneath light yellow, above dull yellow, annulated indistinctly with pale black colour. Abdomen beneath light yellow, above dull yellow with a heart marking and pale black transverse lines (Fig. B). The measurements(cm) are as follows:—

Sex	Total length	Length of abdomen	Leg I	Leg II	Leg III	Leg IV
♀	1.00	0.48	1.65	1.65	1.60	2.30
„	0.93	0.50	1.60	1.60	1.60	2.05
„	0.90	0.50	1.65	1.65	1.60	2.13

Remarks: This species is very allied to *Lycosa constricta* O. P. CAMBRIDGE, but differs in the body-colour and the form of epigynum. *L. constricta* has a distinct marking on abdomen, namely according to the original paper “abdomen usually olive-brown, with a darker shoulder-spot and a dark, anterior, central, lanceolate, dorsal bar, followed by a series of indistinct yellow chevrons, the anterior ones disconnected in the middle”. Epigynum is broader than long in both species, but in the present species not so large in proportion as in *L. constricta* (Fig. B”).

摘 要

二新種を含む故高橋定衛氏採集蜘蛛

故高橋定衛氏が主として臺灣で採集された蜘蛛約 30 個體の査定結果を岡田彌一郎博士、駒井卓博士並に故人令弟高橋憲、三氏の計畫なる故人紀念出版の一部として茲に記す。査定種は次の 8 既知種及び 2 新種である。

1. *Atypus Karschi* DÖNITZ
2. *Heteropoda venatoria* (LINNAEUS)
3. *Thomisus onustoides* BÖS. et STRAND
4. *Plexippus Paykulli* (AUDOUIN)
5. *Nephila maculata* (FABRICIUS)
6. *Argiope amoena* L. KOCH
7. *Araneus sia* STRAND
8. *Araneus ventricosus* L. KOCH
9. *Lycosa Takahashii* sp. nov. スナハラドクグモ (新稱)
10. *Lycosa formosana* sp. nov. アカネドクグモ (新稱)