



Title	邦産桑類の分類學的知見（五）
Author(s)	堀田, 禎吉
Citation	札幌博物学会会報, 15(1), 23-28
Issue Date	1937-07-30
Doc URL	http://hdl.handle.net/2115/64207
Type	article
File Information	Vol.15No.1_003.pdf



[Instructions for use](#)

8. Margin is crenato-denticulate, base is cordate.f. *Uneme* HOTTA
 Margin is dentato-serrulate or crenato-denticulate, base is truncate or shallowly cordate.f. *Suguwa* HOTTA
9. Petiole of the leaf greenish-blue. 10
 Petiole of the leaf dark-purple.var. *Takaseana* HOTTA
10. Teeth of the leaf argute or arguto-serrulate. 11
 Teeth of the leaf usually obtuse or rarely dentato-serrate.
 var. *typica* HOTTA 12
11. Teeth of the leaf is argute, upper surface of the leaf is asperate.
 var. *argutidens* KOIDZ.
 Teeth of the leaf is arguto-serrulate, upper surface of the leaf rather smooth, base truncate.var. *Okubo* HOTTA
12. Apex of the lateral lobes, when present is usually acute or obtuse.
 f. *normalis* HOTTA
 Apex of the lateral lobes is rounded.f. *Daruma* HOTTA

Macromorus KOIDZUMI

Imp. Sericult. Exp. Stat., II, 1, p. 4 (1923).

(1). *Morus latifolia* POIRET

Morus latifolia POIRET in LAMARCK, Encycl. Bot., IV, p. 381 (1796).

Nom. Jap. *Roso*: *Ibikuwa* (*Iwase-guwa*), *Ishida-guwa*, *Izuwase*, *Juunsen*, *Kagamime*, *Kairyookameroso*, *Kairyokita* (*Kumakuwa*), *Kairyokirebaroso*, *Kairyokumonryu*, *Kairyomikameroso*, *Kairyooharoso*, *Kairyoyomozaki* (*Kyuichi*, *Kyuichiwase*, *Obayomozaki*), *Kakukasuga*, *Kakumesan*, *Kanraoba*, *Kanroso* (*Asahinishiki*, *Azamiroso*, *Iwafuku*, *Kanra*, *Mikikakushi*, *Wakafuku*, *Yamatonishiki*), *Kantonkeiso*, *Kashiwawase*, *Kawaura*, *Keiso*, *Kikawakoso*, *Kiko-guwa*, *Kinmeroso*, *Kinnotama*, *Kinroso*, *Kinryu* (*Itaria*, *Itaria No. 2*, *Kyohai*, *Ugonishiki*), *Kohairoso*, *Kokoku*, *Kokuka*, *Kokuko*, *Kokuniwase*, *Kokura*, *Kokuso A*, *B*, *C*, *D*, *E*, *Kokuso No. 7*, *Kokuso No. 17*, *Kokuso No. 70*, *Koryu*, *Koso Kotakuginryu*, *Kumonryu* (*Chosen*, *Koryu*, *Kumo*, *Sekitori*, *Shirakumo*, *Shiromeryu*, *Toryu*), *Karanishi*, *Kurijumonji*, *Kurimoto*, *Kurimotowase*, *Kurome*, *Kyuan*, *Masushin-guwa*, *Matsujirowase*, *Mayezawa*, *Meguwa* (*Fuji-guwa*, *Natsume-guwa*), *Midoriwase*, *Migakida*, *Mikadoroso*, *Mikawakanraso*, *Mikuniroso*, *Mikuniso* (*Moriwaki*, *Seihaku No. 2*, *Sekaiichi*, *Tenguroso*), *Misatonishiki*, *Misonoroso*, *Miyanohomare*, *Monsaku-guwa*, *Murasakiwase*.

* The Japanese names written in italic are of the cultivated races.

** The Japanese names written in parenthesis are synonyms or vernacular names of the cultivated races.

var. **Aburagi** HOTTA, var. nov.

Folium varie lobatum rare non lobatum, supra valde nitidum, apice acuminato vel subito acuminato leviter incurvo, petiolo circ. 2.5–3 cm. longo.

Nom. Jap. *Aburagi*.

Hab. Japonia: in hortis culta.

Remarks. Leaf is variously lobate or rarely not lobate, upper surface of the leaf has a deep green colour, apex is abruptly acuminate or acuminate, petiole is 2.5–3 cm. in length.

var. **Daikoku** HOTTA, var. nov.

Folium subcordatum, dextre sinistrique dissimile, serris magnis obtusis, basi inaequaliter auriculata.

Nom. Jap. *Daikoku*.

Hab. Japonica: in hortis culta.

Remarks. Leaf is subcordate and unequal, teeth are large and rounded, base is unequally auriculate.

Place of the origin of *Daikoku* is Niso village, Kodama district, Prov. Musashi.

Betsuko and *Kensakiroso* are rather closely related to this variety.

var. **Ryugan** HOTTA, var. nov.

Folium ovatum vel ovato-ellipticum, venis supra insigniter pubescentibus, margine fere argutidentata, basi truncata vel fere rotundata rarius aperte cordata.

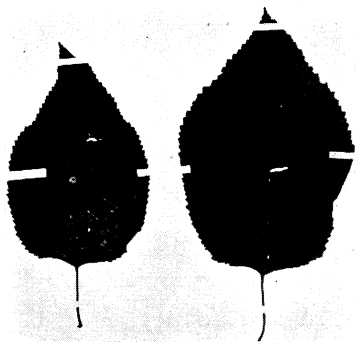


Fig. 2. *M. latifolia* POIRET,
var. *Ryugan* HOTTA

Nom. Jap. *Ryugan*.

Hab. Japonia: in hortis culta.

Remarks. Leaf is ovate or ovato-elliptical, margin is argutidentato-serrate, on the veins of both upper and lower surfaces conspicuously pubescent, base is truncate or rounded or rarely shallowly cordate.

var. **subpalmata** HOTTA, var. nov.

Folium fere cordatum vel palmatum, apice longiacuminato fere incurvo, petiolus circ. 3 cm. longus.

Nom. Jap. *Azumaya*, *Mitsugi-roso*.

Hab. Japonia: in hortis culta.

Remarks. Leaf is subpalmate, apex of the leaf is long acuminate. Petiole



Fig. 1. *M. latifolia* POIRET,
var. *Daikoku* HOTTA

3 cm. in length.

Sakaiwase is closely related to this variety.

form. **Uneme** HOTTA, f. nov.

Folium ovatum vel ovato-ellipticum, supra valde nitidum, insigniter viride, margine crenato-denticulata.

Nom. Jap. *Uneme-guwa*.

Hab. Japonia: in hortis culta.

Remarks. Leaf is ovate or ovato-elliptical, upper surface of the leaf has a strong luster and deep green colour, margin crenato-denticulate, and the base is cordate.

Shinteiroso is closely related to this variety.

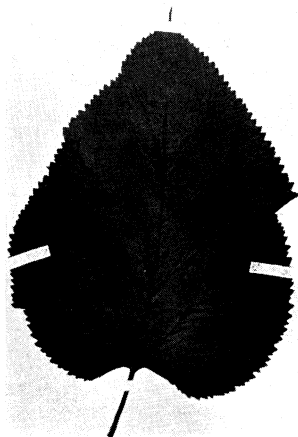


Fig. 3. *M. latifolia* POIRET,
form. *subulata* HOTTA

form. **subulata** HOTTA, f. nov.

Folium ovatum vel elliptico-ovatum, apice subulato, margine dentato-serrata.

Nom. Jap. *Mino-guwa*.

Hab. Japonia: in hortis culta.

Remarks. Leaf is ovate or elliptical-ovate, apex of the leaf is subulate, margin dentato-serrate.

form. **Sugawa** HOTTA, f. nov.

Folium oblongiovatum, valde pendulum, margine dentato-serrulata vel crenato-denticulata, basi truncata vel aperte cordata, petiolo 2.5-3 cm. longo.

Nom. Jap. *Suguwa*.

Hab. Japonia: in hortis culta.

Remarks. Leaf is oblongo-ovate, pendulate, margin is dentato-serrulate or rather crenato-denticulate, base is truncate or shallowly cordate, petiole 2.5-3 cm. in length.

(2) **Morus alba** LINN.

Morus alba LINN., Sp. Pl. ed. 1, p. 986 (1753).

Nom. Jap. *Karayama guwa*: *Aoichi*, *Fukushimaoha*, *Ibaragioha*, *Maguwa*, *Marubajumonji* (*Ishiokajumonji*, *Ishiokasaburo*), *Marubanezumigayeshi*, *Mayesima-guwa*, *Midare-guwa*, *Mikawaawomerokuro*, *Nagashinju*, *Nagase*, *Naganokairyojumonji*, *Nakamagi* (*Tanbagi*), *Nakata*, *Nakayama*, *Nashiji*, *Nemurasaki*, *Obanezumigayeshi*, *Obataro*, *Obawase* (*Akameaoichi*, *Aoichi*, *Fukushimaoha*, *Ibaragioha*, *Nagashinju*, *Obaichibei*, *Obarokuro*, *Obataro*, *Oha*, *Shimamura*, *Unehitsukan-guwa*), *Ochii* (*Jirohachi*, *Kakikomi*), *Oha*, *Ohatajumonji*, *Okutejumonji*, *Onibanto*, *Oshyuoha*, *Riso* (*Fuyeiso*), *Risojumonji*, *Risowase*, *Risowasejumonji*, *Roshiya-guwa*, *Senmatsu* (*Ayanishiki*, *Kojima-guwa*), *Shidarekunitomi*, *Shima-*

mura (*Shimamurawase*), *Shimamurawase* (*Aoichi*, *Aokiichibei*, *Jyoshuichibei*), *Shimoshirazu*, *Shironezumigayeshi*, *Shiroshidare*, *Shirowase*, *Shukakuichi* (*Fueiso*, *Futagawawase*, *Kinenwase*, *Osumi-guwa*, *Seihaku No. 2*, *Taishyo-guwa*, *Taishoroso*, *Umedawase*, *Yatsubusa*), *Shoji*, *Sononishiki*, *Sujikuwa*, *Taguchi-guwa*, *Taishyowase*, *Tajimashidare*, *Takedajumonji* (*Ichikojumonji*, *Toyookajumonji*, *Tsukasajumonji*, *Wasukeoha*), *Takaradajumonji*, *Takara-guwa*, *Tamajumonji*, *Tamanishiki*, *Tanba*, *Tanbagi* (*Akitsumaru*, *Nakamagi*, *Tanba*, *Tanbamaru*), *Tanbahamagoro*, *Tanbaichibei*, *Tanbataro*, *Tanbawase*, *Tanbawasemishyo*, *Tarekuwa*, *Toyotajumonji*, *Wada-guwa*, *Wadajumonji*, *Wasejumonji*, *Unehitsukan-guwa*, *Yaguwa*, *Yamano*, *Yamato* (*Aoyagiyamato*, *Mukashiyamato*, *Oyamato*), *Yamanakatakasuke* (*Oshutakasuke*), *Yatsubusa* (*Kairyohosoe*, *Obanezumigayeshi*, *Shukakuichi*, *Yamanishiki*), *Yahei*, *Yotsume*.

var. ***Takaseana*** HOTTA, var. nov.

Frutex fere multicaulis, ramulis breviinternodis, foliis congregatis. Petiolus atropurpurescens, margine folii fere arguta.

Nom. Jap. *Takase-guwa* (nov.).

Hab. Japonia: in hortis culta.

Remarks. Shoots with short internodes and dense leaves are profusely branched. Petiole is dark-purple. Teeth of the leaf is more or less argute.

This variety was originated in the Sericultural Experiment Station in Nagahama, Prov. Omi.

var. ***argutidens*** KOIDZUMI, Bot. Mag. (Tokyo), XXX, p. 40 (1917); Bull. Imp. Sericult. Exp. Stat., II, 1, p. 30 (1923)—MAKINO et NEMOTO, Fl. Jap., p. 219 (1931).

Folium supra valde asperatum varie lobatum. Apex laterisegmenti rotundatus vel acutus vel subito acuminatus; margine plerumque argutidentata, apice incurvo.

Nom. Jap. *Zarabakarayama-guwa* (nov.); *Aichiichibei-guwa*, *Akagiichibei-guwa* (*Akaichi*, *Akaichibei*, *Akameichibei*, *Dateichibei*, *Ichibei*, *Jyoshuichibei* et *Kireichi*), *Dateichibei*, *Fukushimaichibei-guwa* (*Banto*, *Kuroshodo*, *Sakamoto*, *Sekaiichi*, *Tanikaze* et *Tsuruta*), *Ichibei* (*Akaichi*, *Dateichibei*, *Hirakiriichibei*, *Kurokiichibei*, *Oshyuichibei*), *Marubaichibei*.

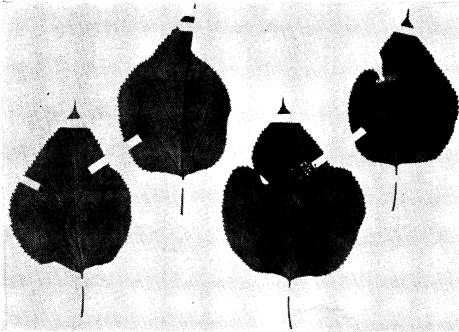
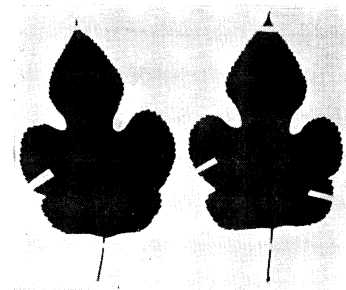
Hab. Japonia: in hortis culta.

Remarks. *Ichibei* was originated in 1880 (the era of Genroku) by I. SATO of Fushiguro village, Date district, Prov. Iwashiro.

Oshyu is closely related to this variety.

var. ***Okubo*** HOTTA, var. nov.

Folium dextre sinistrique dissimile, margine argutiserrulata, apice leviter incurvo, basi truncata.

Fig. 4. *M. alba* LINN., var. *Okubo* HOTTAFig. 5. *M. alba* LINN.,
form. *Daruma* HOTTA

Nom. Jap. *Okubo*.

Hab. Japonia: in hortis culta.

Remarks. Leaf is unequal in shape, margin arguto-serrulate, base is truncate.

form. *Daruma* HOTTA, f. nov.

Ramulus fere erectus, folio plerumque 2-4 lobato, supra laeve, apice lateri-segmenti rotundo, basi truncata vel aperte cordata.

Nom. Jap. *Daruma*.

Hab. Japonia: in hortis culta.

Remarks. Branch is rather erect. Leaf is usually 2-4 lobate, apex of the lateral lobes rounded, upper surface of the leaf is smooth, base is truncate or shallowly cordate.

Kairyodaruma is closely related to this form, but the young shoot of the former is rather bluish-white.

Botanical Institute, Faculty of Agriculture,
Hokkaido Imperial University, Sapporo, Japan.

摘 要

邦産桑屬ノ分類學的知見(五)

Morus latifolia POIRET, var. *Aburagi*, var. *Daikoku*, var. *Ryugan*, var. *subpalmata* ノ四新變種竝ニ f. *Uneme*, f. *subulata*, f. *suguwa* ノ三新品種ヲ創定シ又 *Morus alba* LINN. = var. *Takaseana*, var. *Okubo* ノ二新變種及 f. *Daruma* ノ一新品種ヲ創定シタ。又 var. *argutidens* = 新シク二三ノ栽培種ヲ加ヘタ。即栽培種ニ六新變種、四新品種竝ニ新シク栽培種ヲ加ヘター變種ヲ合シ七變種四品種ヲ記載シタ。

尙 *Morus Latifolia* POIRET = 包含スベキ栽培種六十五種、*Morus alba* LINN. = 包含スベキ栽培種七十一種ヲ確認シタ。