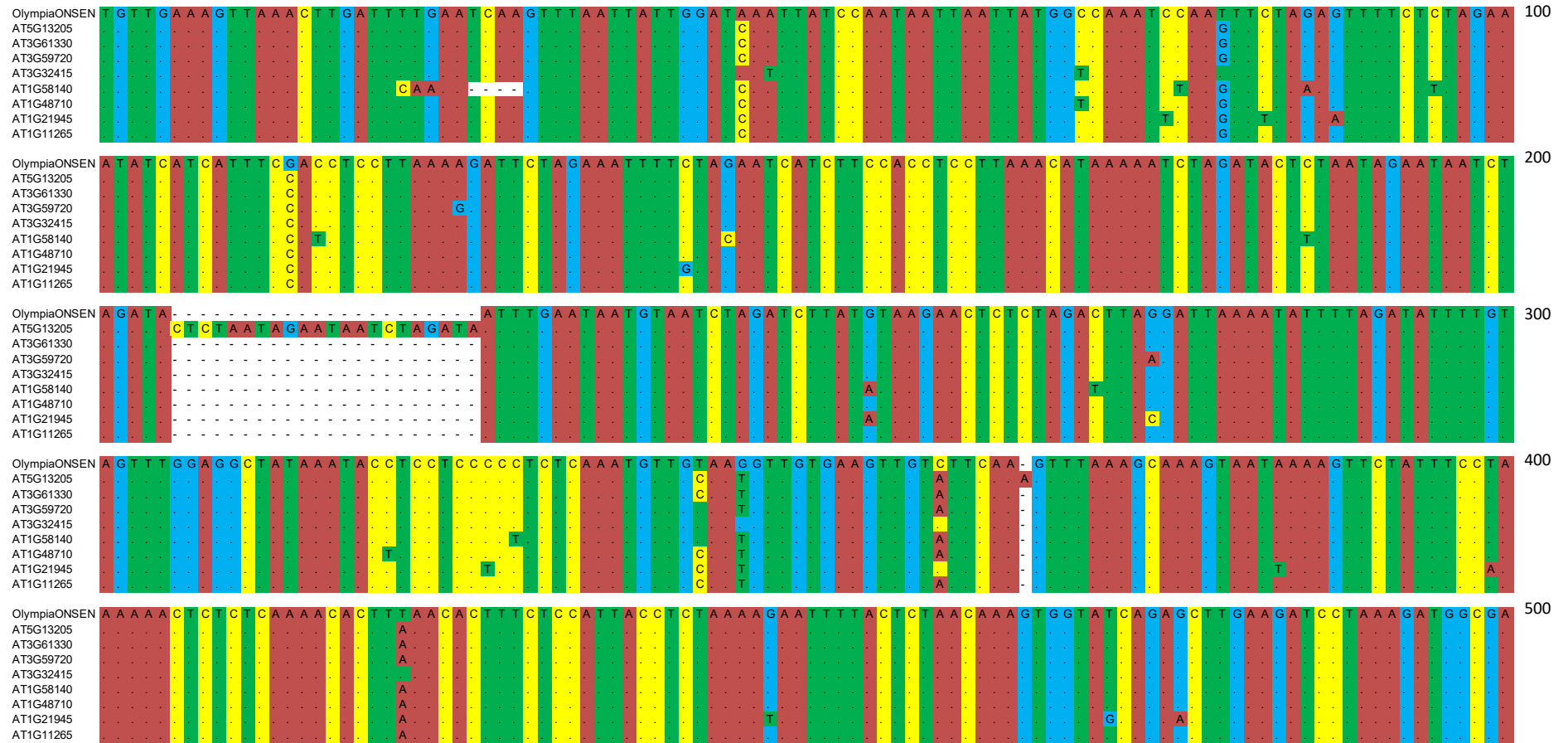
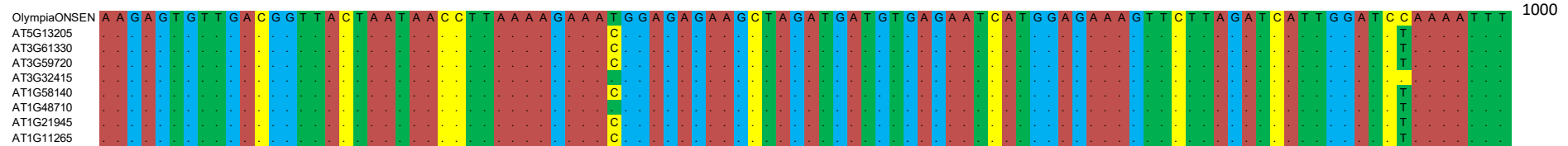
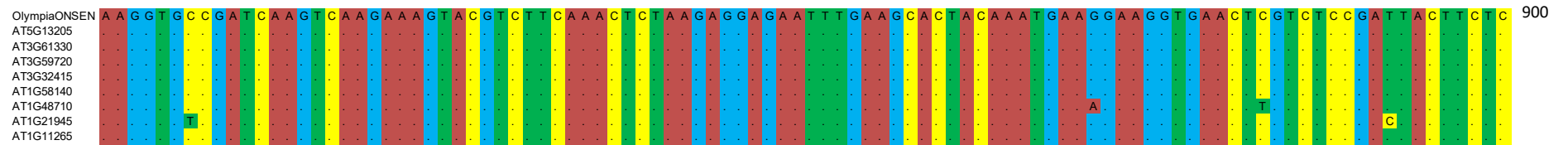
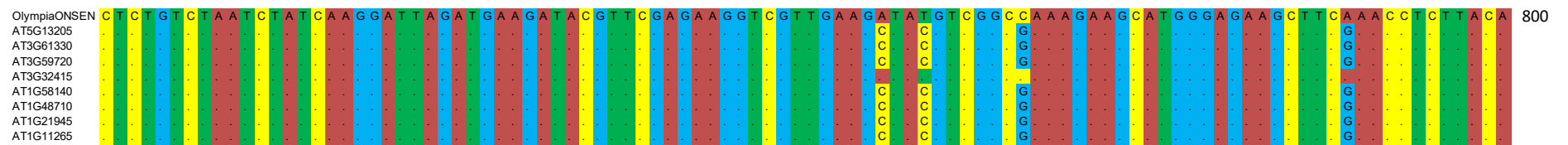
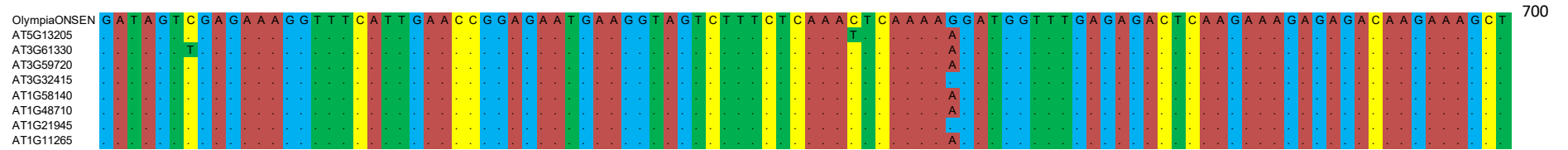
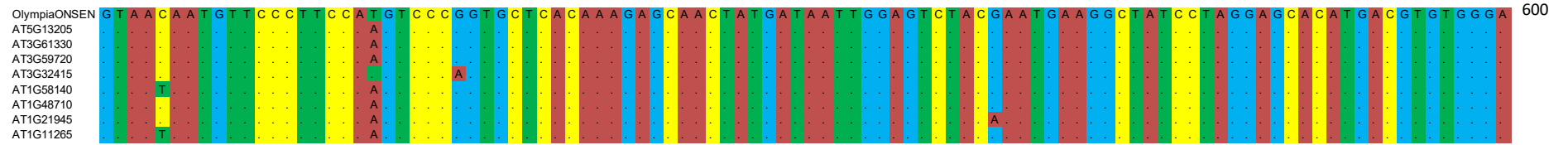


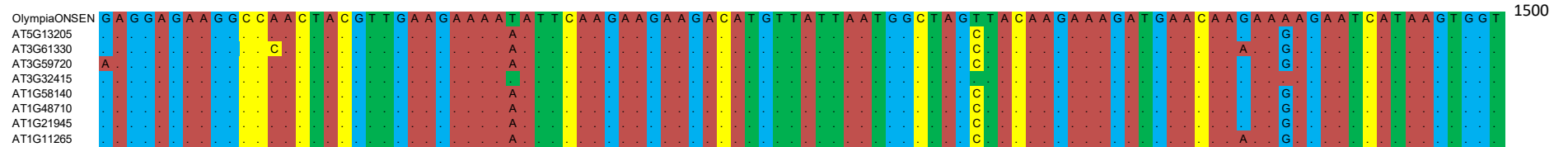
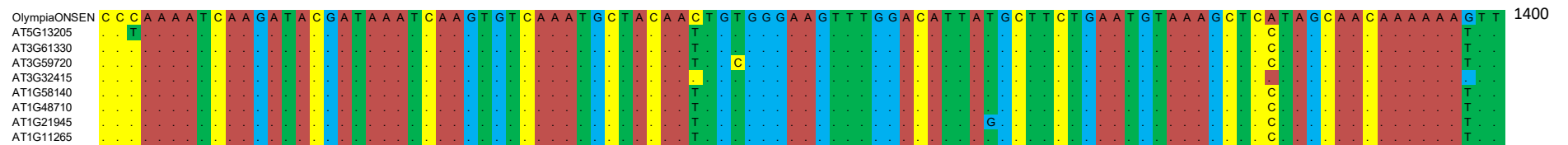
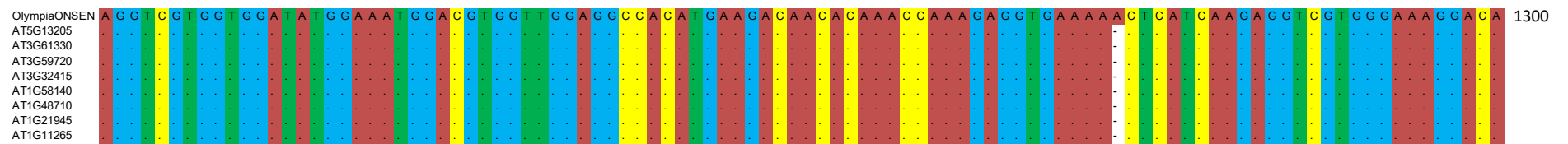
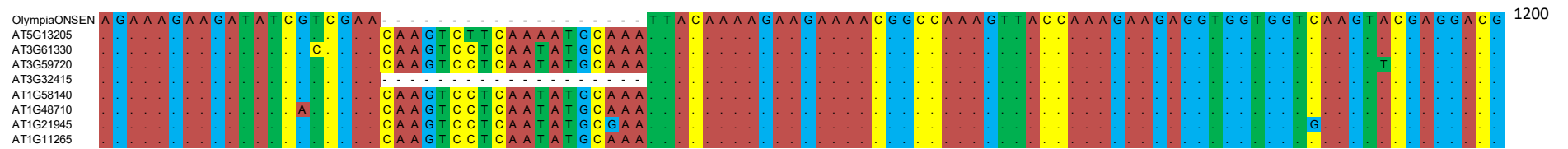
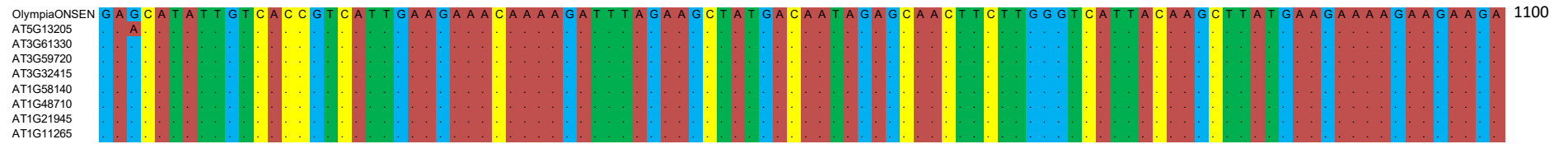
Supplementary Table S1. Primer sequences.

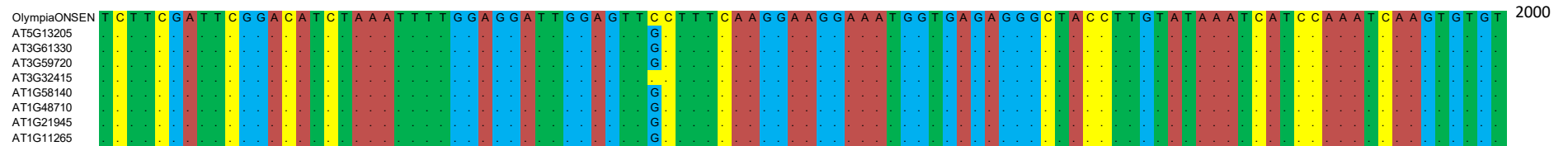
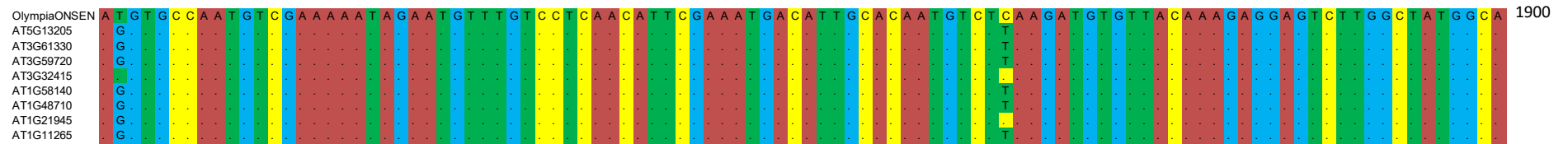
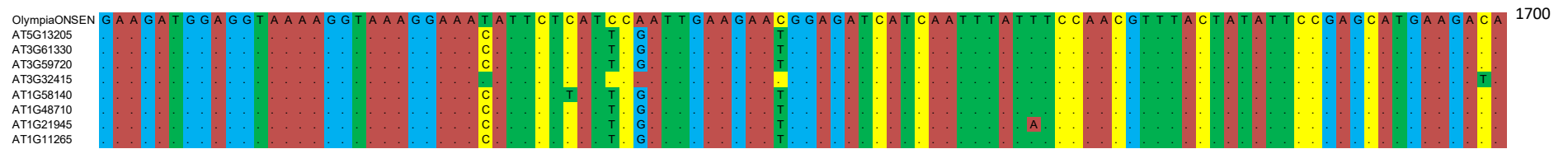
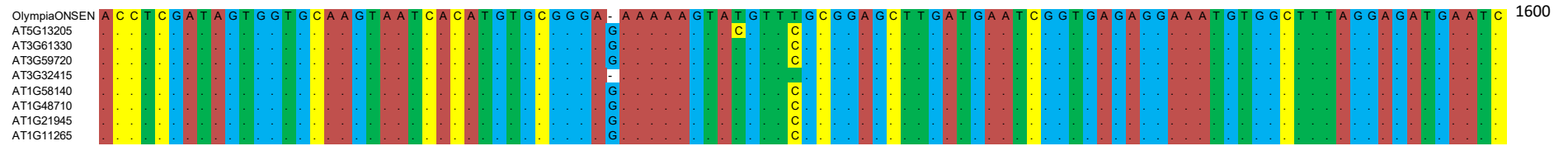
Target/Purpose	Name	Primer	
Southern probe	ONSEN-F	TAA TGT TCC CTT CCA AGT CCC	
	ONSEN-R	GCT TGT AAT GAC CCA AGA AGT	
q-RT-PCR	COPIA78_4129F_RT	CCA CAA GAG GAA CCA ACG AA	
	COPIA_4300R_RT	TTC GAT CAT GGA AGA CCG G	
	HsfA2_qPCR_F	TGG GAT TCT CAT AAG TTC TCA ACA	
	HsfA2_qPCR_R	TGG ATC AAT CTT TCT GAA TCC AT	
	HSP90.1-qRT-PCR-F	CAA CAA AGA AAT CTT CCT CCG TGA G	
	HSP90.1-qRT-PCR-R	CAT CGA GCT TGC TCT TAT CCG TTA	
	18Sr_FW	CGT CCC TGC CCT TTG TAC AC	
	18Sr-RV	CGA ACA CTT CAC CGG ATC ATT	
	PCR of 8 copies of <i>ONSEN</i>	AT1G48710-F	ACA TTC TTC GCG GGA AAT GT
		AT1G21945-F	ATG GCG AGA GAT TCT TGC AG
	AT1G58140-F	ATG GAG GCG GAG ATG TTG A	
	AT1G11265-F	ATA TAT CAC CCG ATG TCC CCA	
	AT3G32415-F	CAG AGG CAA GCT TTT TAC CA	
	AT3G61330-F	TAA CTG GCT TCC TGA CCC AAA	
	AT3G59720-F	CTT CAT TTT CCG CTT CAC GT	
	AT5G13205-F	ACA CAA AAG TCC AGC TCT GGT	
	8copies-REVERSE	CCT TCA TTC TCC GGT TCA AT	
	Maseq-351	GTG AAG TTG TCT TCA AGT	
	Maseq-701	CTC TGT CTA ATC TAT CAA	
	Maseq-1051	AAT AGA GCA ACT TCT TGG	
	Maseq-1411	ATT CAA GAA GAA GAC ATG	
	Maseq-1751	AAG AGA CCA AGA AAG CAA	
	Maseq-2109	AGT AAT TAC TTC CTT CTC	
	Maseq-2453	GGT AGC GTG TGC GGT TTA	
	Maseq-2804	GGA GCC AAC AAG AGA GGA	
	Maseq-3151	AAG GAG AAG TGG AAA GAT	
	Maseq-3501	CCA TAT GAG CAT GCA CTC	
	Maseq-3851	GAG CTT GGT TGG AAG CTT	

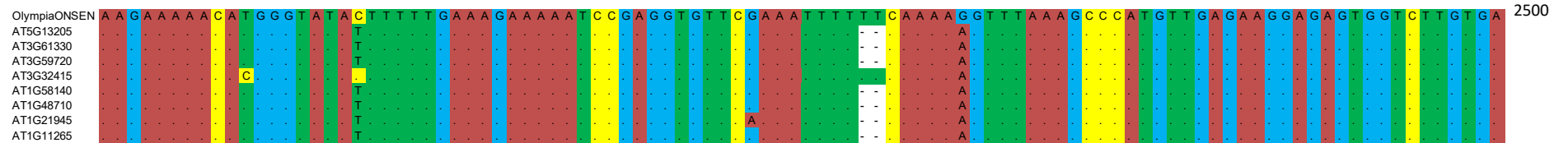
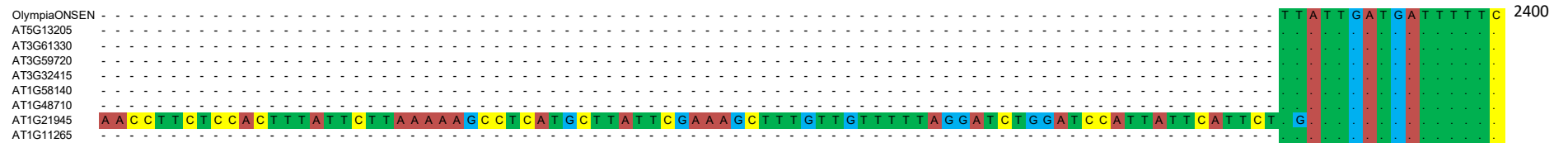
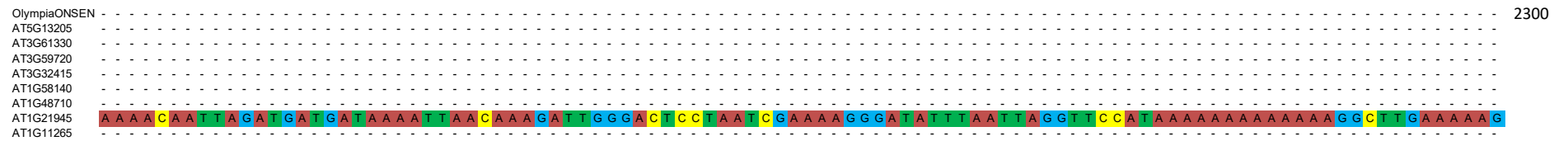
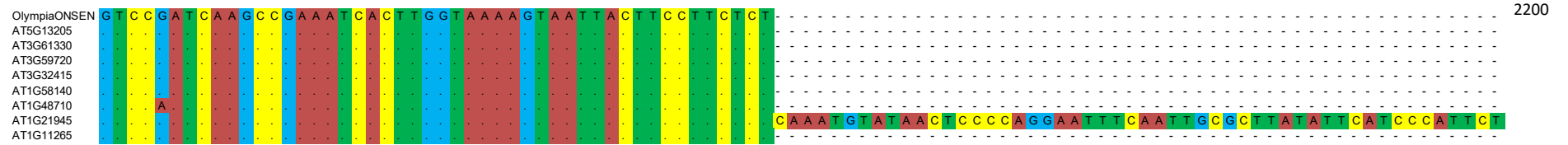
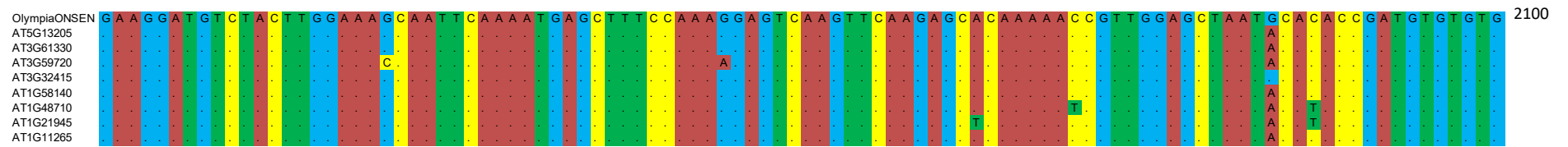
	Maseq-4201	CAT GTG TAT GCC ATG CTA
	Maseq-4553	TTA TTG GAT AAA TTA TCC
	Maseq-4911	CAT TTT AAC ACT TTC TCC
Cloning of <i>ONSEN</i>	AT3G32415full-F	AGG CAA GCT TTT TAC CAG CA
in <i>Olympia-1</i>	AT3G32415full-R	TTT CCA AGT CCA GAG AGG AGT
	<i>Olympia-seq-R</i>	TAG GCT CTT CAC TTG GTG GCT
	M13 (-21)	TGT AAA ACG ACG GCC AGT
	M13 Reverse	CAG GAA ACA GCT ATG ACC
Genotype of <i>ONSEN</i>	AT1G11265-F	ATA TAT CAC CCG ATG TCC CA
in Col-0/ <i>Olympia-1</i>	at1g11265-R	CCG AGG TCC TGA TGT TCT TGT
hybrid	AT1G21945part4-F	TGT AAG CAT CGT CGA TGG TCT
	AT1G21945part4-R	TCT GTT TCT TTG GCT TGG GA
	AT1G21945-F	ATG GCG AGA GAT TCT TGC AG
	AT1G48710-part2F	GAA ACG TGG CTG CAA GAA AA
	AT1G48710-part2R	GTT AAA GGG CAA ATT GGT CC
	AT1G48710-F	ACA TTC TTC GCG GGA AAT GT
	AT1G58140-F	ATG GAG GCG GAG ATG TTG A
	at1g58140F	TTC CAT GGT TTT GTT CAT TTG
	AT3G59720part4-F	CAT GGT TTG CAC ATT GTG CT
	AT3G59720part4-R	TCA GCA ATC GGT TTC GTC TT
	AT3G59720-F	CTT CAT TTT CCG CTT CAC GT

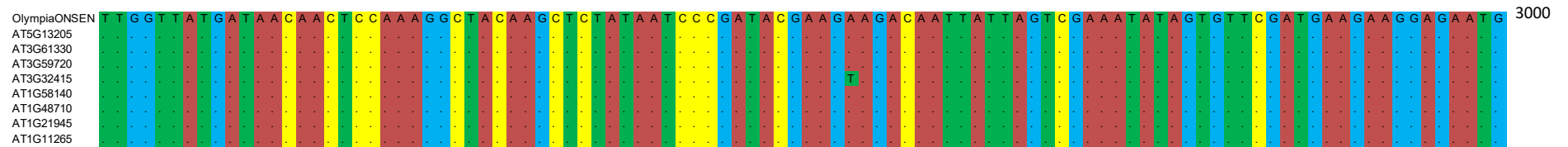
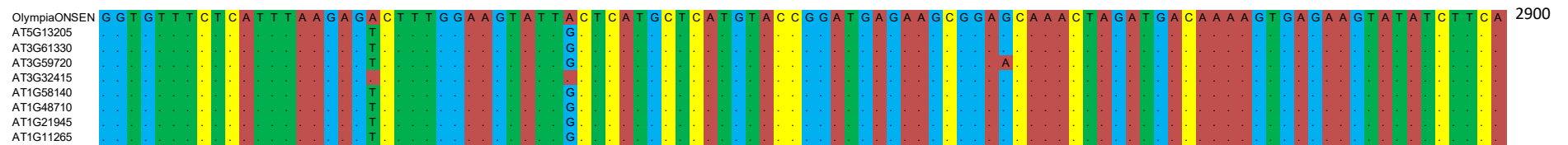
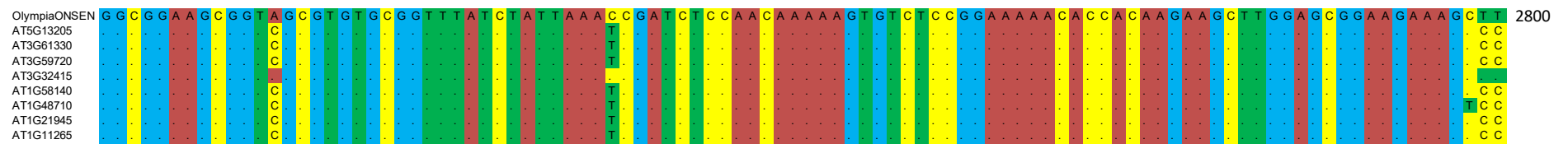
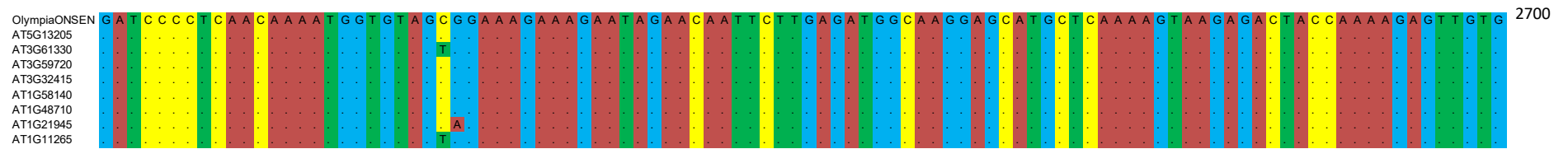
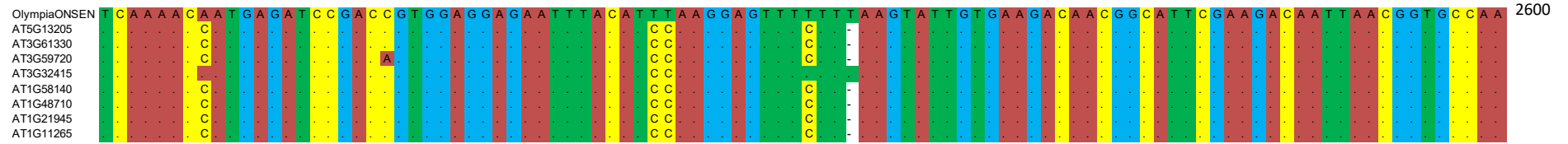


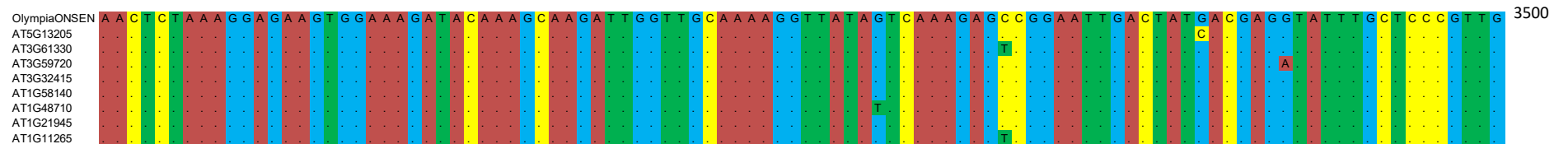
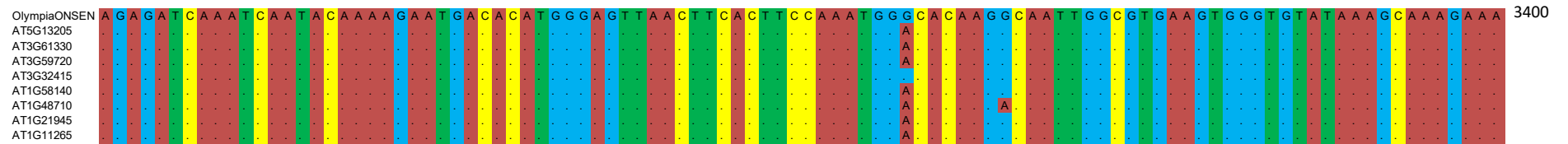
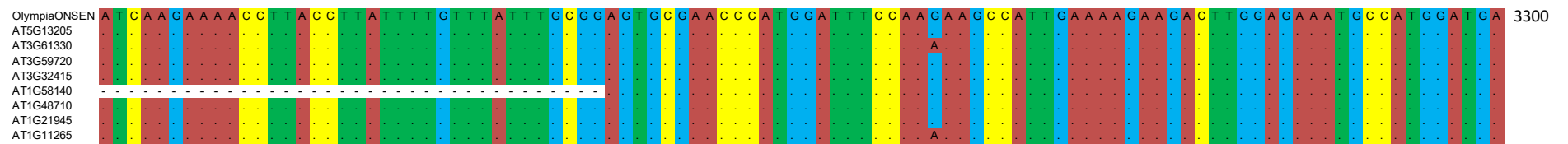
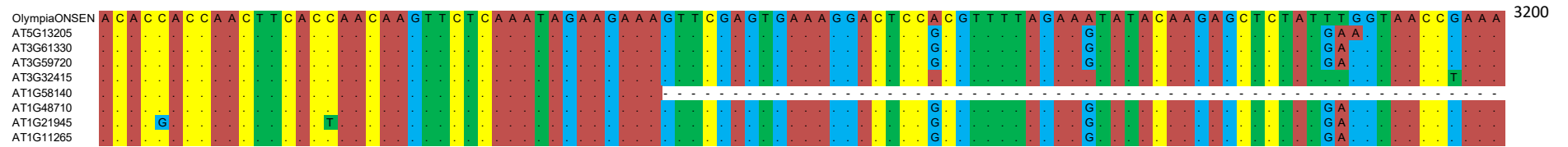
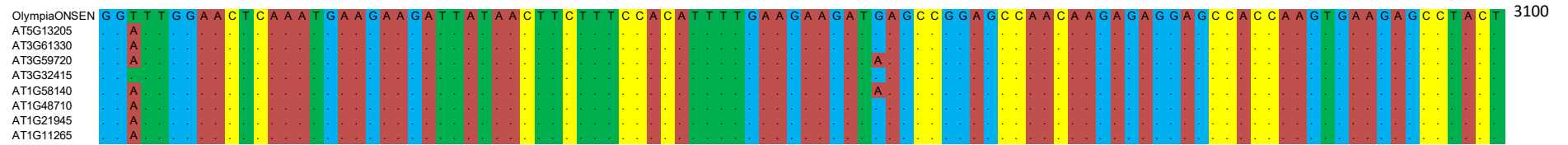


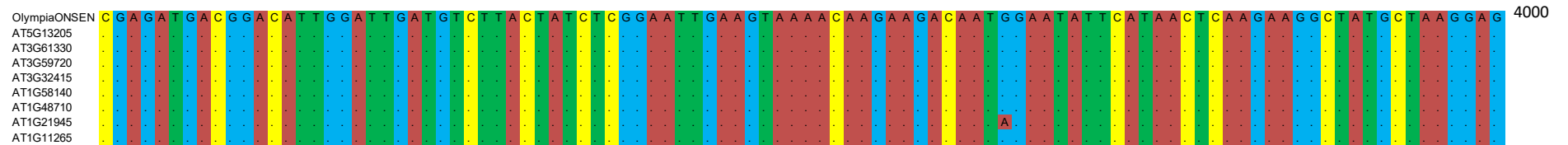
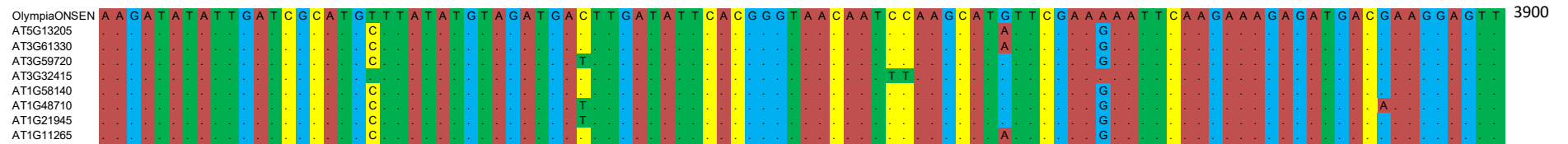
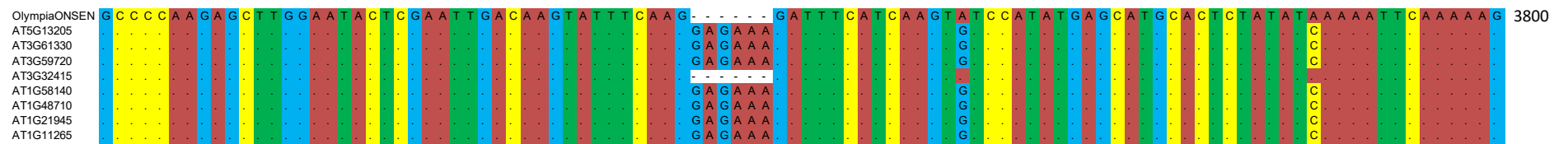
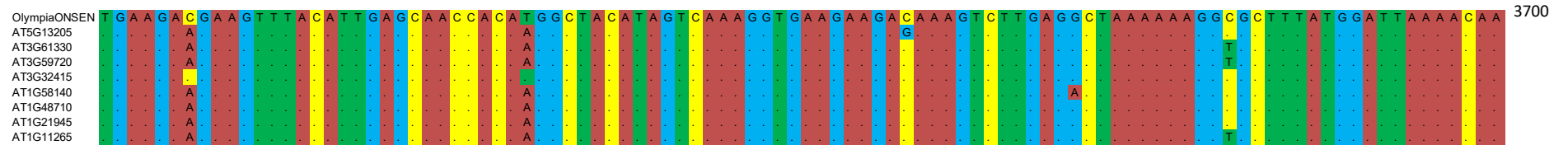
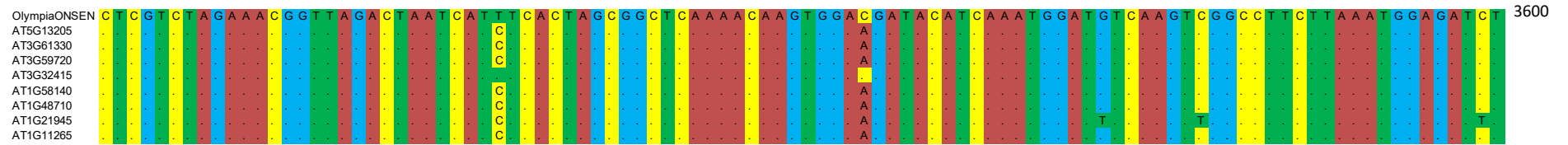


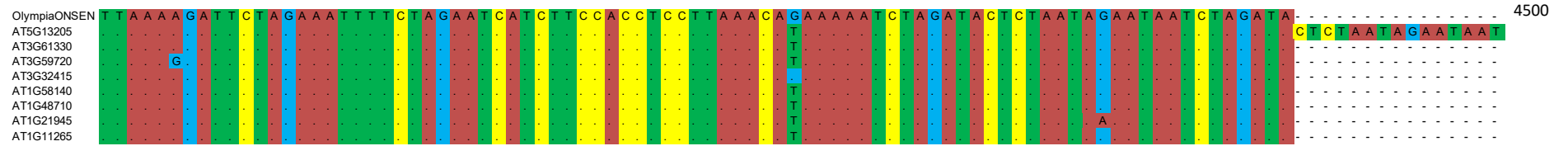
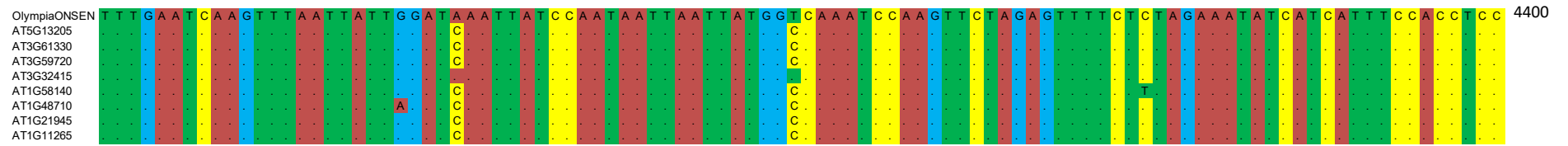
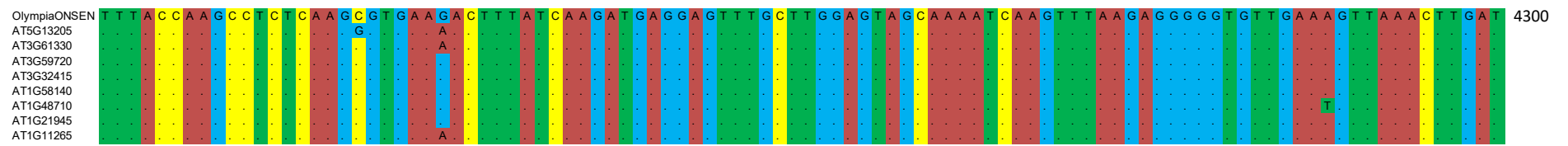
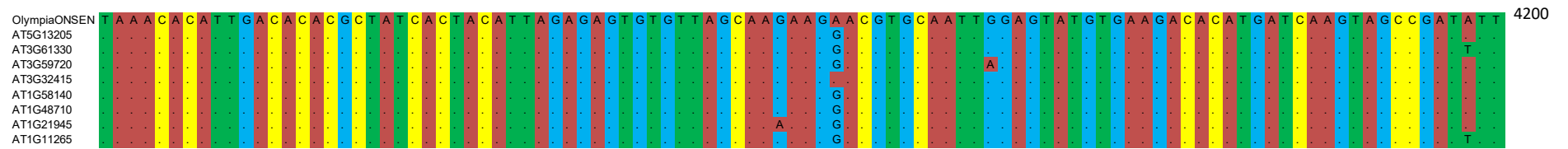
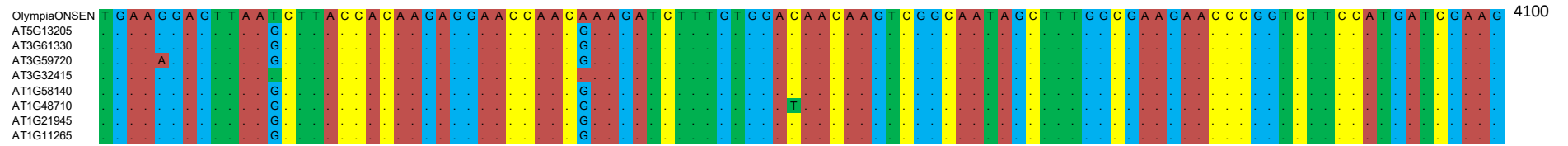












OlympiaONSEN	- - - - -	A T T T G A A T A A T G T A A T C T A G A C T T A T G T A A G A A C C T C T A G A C T T A G G A T T A A A A T A T T T T A G A T A T T T T G T A G T T T A G A G G C T A T A A A T A C	4600
AT5G13205	C T A G A T A		
AT3G61330			
AT3G59720			
AT3G32415			
AT1G58140			
AT1G48710			
AT1G21945		A	
AT1G11265			

OlympiaONSEN	C T C C T C C C C C T C C A A A T G T T G T C A G G T T G T G A A G T T G T C T T C A A - G T T T A A A G C A A A G T A A T A A A A G T T C T A T T T C C T A A A A A G - C T C T C T C A A A A C A T	4700	
AT5G13205		A	A
AT3G61330		C	A
AT3G59720		A	A
AT3G32415		A	A
AT1G58140		A	A
AT1G48710	T	C	A
AT1G21945		C	A
AT1G11265		C	A

OlympiaONSEN	T T T A A C A C T T T C T C C A T T A C C T C T A A A A G A A T T T T A C T C T A A C A
AT5G13205	A
AT3G61330	A
AT3G59720	A
AT3G32415	
AT1G58140	A
AT1G48710	A
AT1G21945	A
AT1G11265	A

Supplementary Fig. 1. Multiple sequence alignment of full-length *ONSENs*. The gene IDs refer to the eight *ONSEN* copies in Col-0. Olympia-1 represents the sequence of an *ONSEN* copy in the natural accession Olympia-1. Nucleotides identical to those in Olympia-1 *ONSEN* are indicated as dots.