



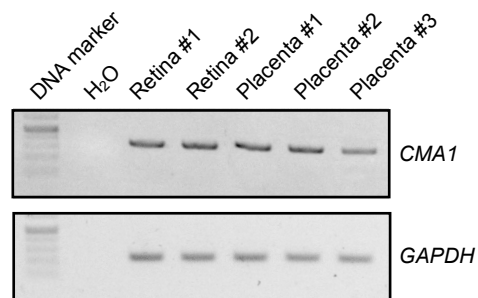
Title	Pathologic Roles of Receptor-Associated Prorenin System in Idiopathic Epiretinal Membrane
Author(s)	Dong, Yoko; Kanda, Atsuhiko; Noda, Kousuke; Saito, Wataru; Ishida, Susumu
Citation	Scientific reports, 7, 44266 https://doi.org/10.1038/srep44266
Issue Date	2017-03-09
Doc URL	http://hdl.handle.net/2115/65771
Rights(URL)	http://creativecommons.org/licenses/by/4.0/
Type	article
Additional Information	There are other files related to this item in HUSCAP. Check the above URL.
File Information	srep44266-s1.pdf (Supplementary Figures)



[Instructions for use](#)

Pathologic Roles of Receptor-Associated Prorenin System in Idiopathic Epiretinal Membrane

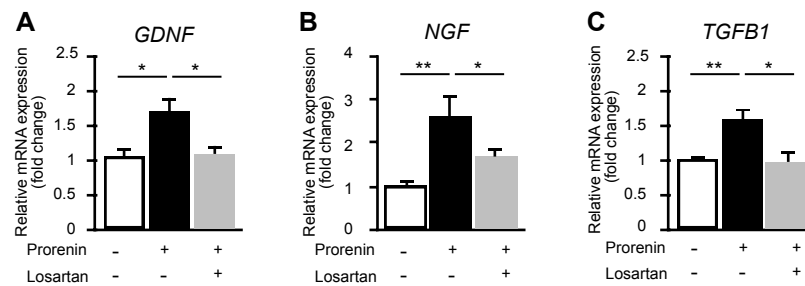
Yoko Dong, Atsuhiko Kanda, Kousuke Noda, Wataru Saito and Susumu Ishida



Supplementary Figure S1. Gene expression of *CMA1* in human retinas and placentas. RT-PCR analysis was performed to check the expression of *CMA1* in two retinas and three placentas.

Pathologic Roles of Receptor-Associated Prorenin System in Idiopathic Epiretinal Membrane

Yoko Dong, Atsuhiko Kanda, Kousuke Noda, Wataru Saito and Susumu Ishida



Supplementary Figure S2. (P)RR-mediated upregulation of *GDNF*, *NGF* and *TGFB1* in MIO-M1 cells. A, Relative mRNA expression levels of *GDNF* in prorenin-stimulated MIO-M1 cells with/without losartan for 24h (n = 8 per group). B-C, Relative mRNA expression levels of *NGF* and *TGFB1* in MIO-M1 cells stimulated by prorenin with/without losartan for 48h (n = 8 per group). * $p < 0.05$, ** $p < 0.01$.