



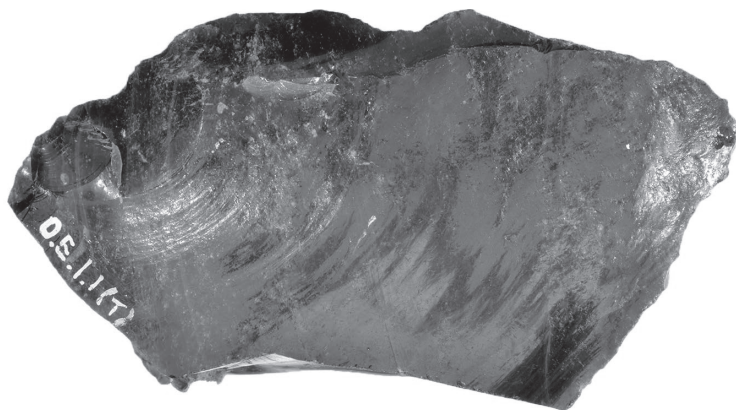
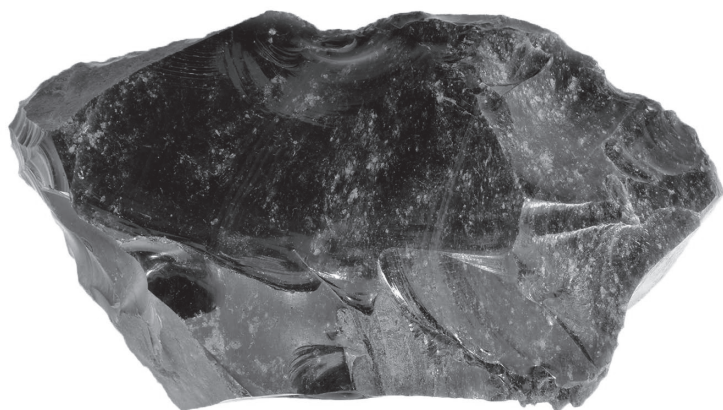
Title	2. 図版
Author(s)	矢原, 史希; 中沢, 祐一; 松谷, 美穂
Citation	9-164 北海道大学所蔵中里遺跡(置戸町)収集考古資料 = A Catalogue of the Prehistoric Artifacts from the Nakazato Site, Oketo Town, Hokkaido, Japan / 中沢祐一, 矢原史希編集・執筆
Issue Date	2017-09-30
Doc URL	http://hdl.handle.net/2115/67621
Type	bookchapter
Additional Information	There are other files related to this item in HUSCAP. Check the above URL.
File Information	05ArtifactsNakazato_59-67.pdf (第二地区 E地点 (PLATE 50-58))



[Instructions for use](#)

PLATE 50

第二地区 E地点



1101-2-3-5-1-2436



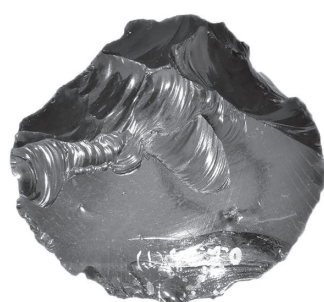
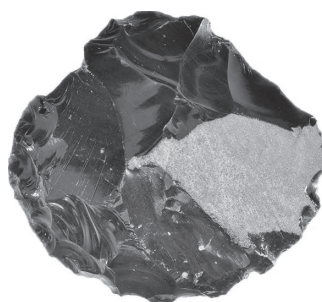
1101-2-3-5-1-2439



1101-2-3-5-1-2442



1101-2-3-5-1-2440



1101-2-3-5-1-2450



1101-2-3-5-1-2456



PLATE 51

第二地区 E地点



1101-2-3-5-1-2443

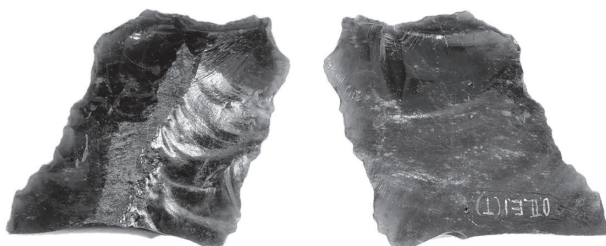


PLATE 52

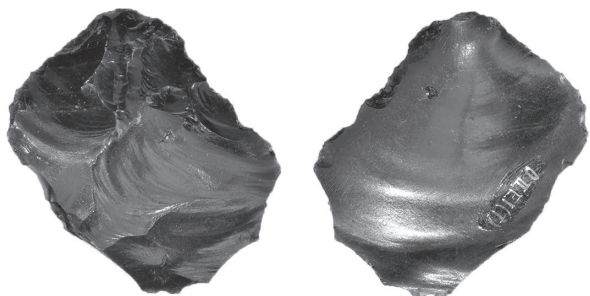
第二地区 E地点



1101-2-3-5-1-2467



1101-2-3-5-1-2469



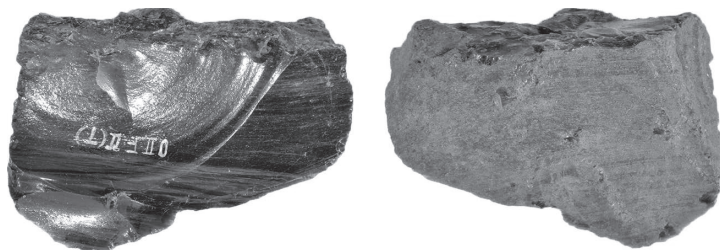
1101-2-3-5-1-2471



1101-2-3-5-1-2472



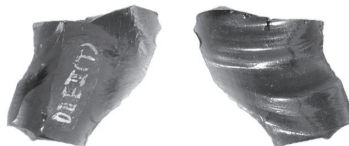
1101-2-3-5-1-2523



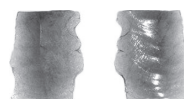
1101-2-3-5-1-2536



1101-2-3-5-1-2541



1101-2-3-5-1-2544



1101-2-3-5-1-2559

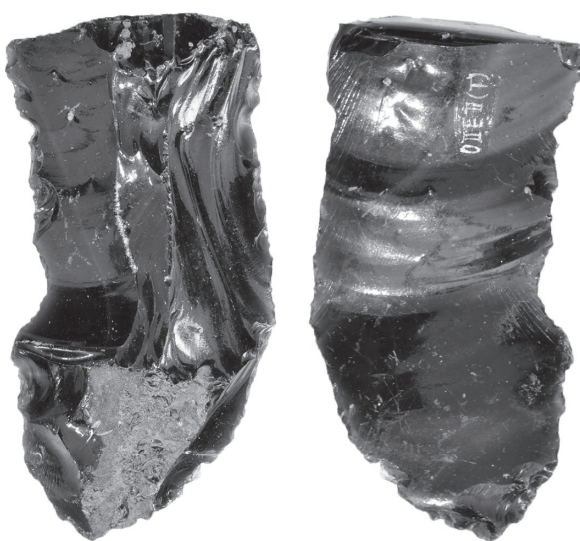


PLATE 53

第二地区 E地点



1101-2-3-5-1-2561



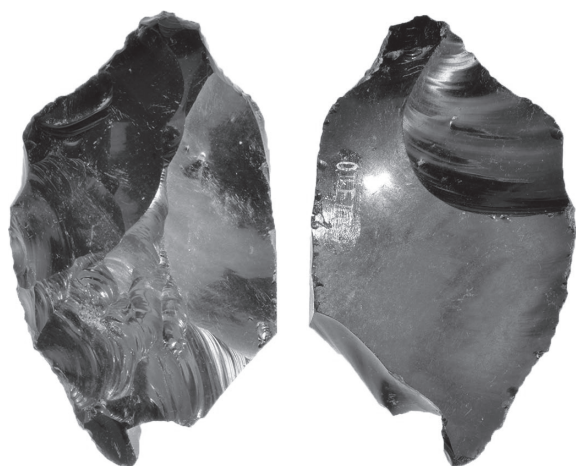
1101-2-3-5-1-2562



1101-2-3-5-1-2563



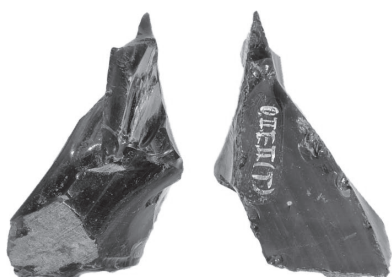
1101-2-3-5-1-2568



1101-2-3-5-1-2575



1101-2-3-5-1-2590



1101-2-3-5-1-2579

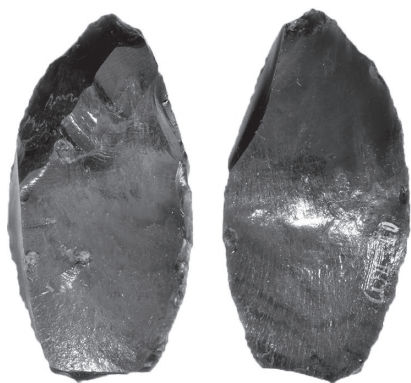


1101-2-3-5-1-2592

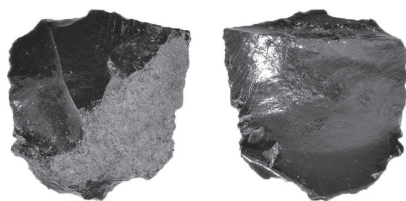


PLATE 54

第二地区 E地点



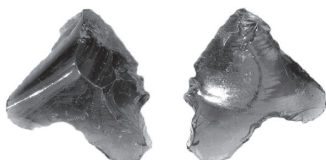
1101-2-3-5-1-2619



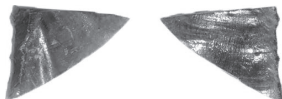
1101-2-3-5-1-2643



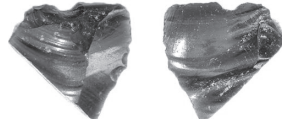
1101-2-3-5-1-2661



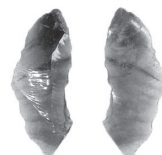
1101-2-3-5-1-2687



1101-2-3-5-1-2701



1101-2-3-5-1-2732



1101-2-3-5-1-2759



1101-2-3-5-1-2765



1101-2-3-5-1-2766

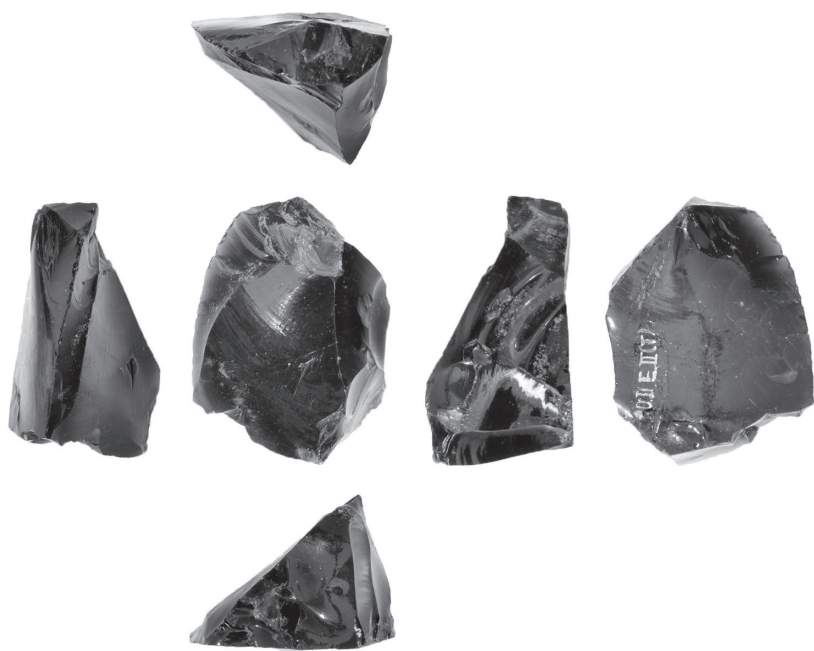


1101-2-3-5-1-2772

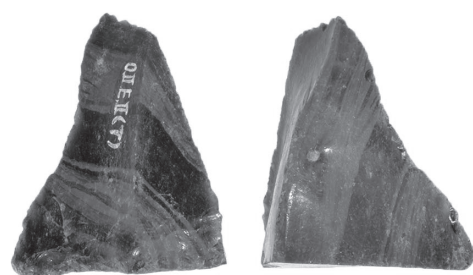


PLATE 55

第二地区 E地点



1101-2-3-5-1-2778

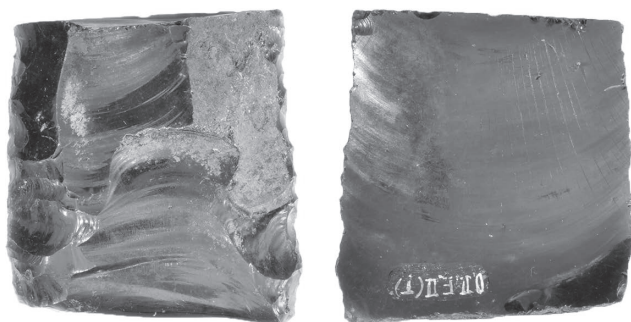


1101-2-3-5-1-2783

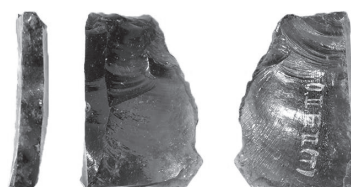


1101-2-3-5-1-2789

1101-2-3-5-1-2796



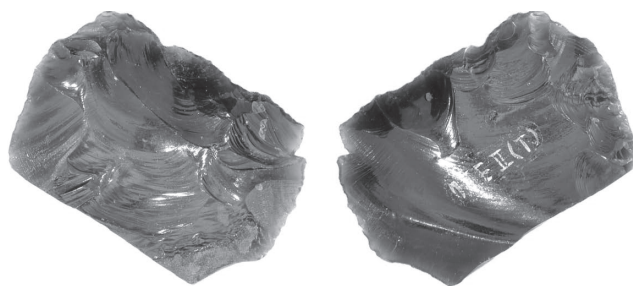
1101-2-3-5-1-2781



1101-2-3-5-1-2797



1101-2-3-5-1-2798

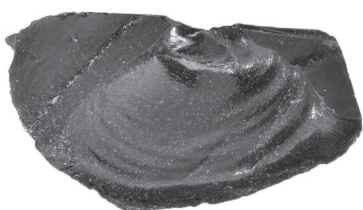
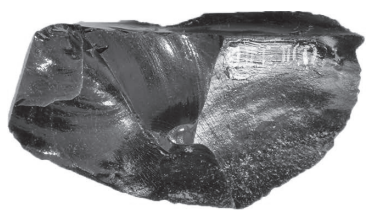


1101-2-3-5-1-2799

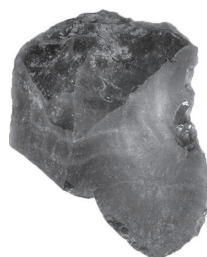


PLATE 56

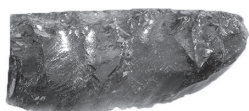
第二地区 E地点



1101-2-3-5-1-2811



1101-2-3-5-1-2813



1101-2-3-5-1-2827



1101-2-3-5-1-2830



1101-2-3-5-1-2907

1101-2-3-5-1-2910



1101-2-3-5-1-3037

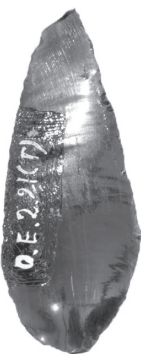


1101-2-3-5-1-2856



1101-2-3-5-1-2912

1101-2-3-5-1-3012



1101-2-3-5-1-3038



1101-2-3-5-1-3039



1101-2-3-5-1-3040



PLATE 57

第二地区 E地点



1101-2-3-5-1-3042



1101-2-3-5-1-3043



1101-2-3-5-1-3044



1101-2-3-5-1-3045



1101-2-3-5-1-3046



1101-2-3-5-1-3051



1101-2-3-5-1-3052



1101-2-3-5-1-3053



1101-2-3-5-1-3054



1101-2-3-5-1-3055



1101-2-3-5-1-3056



1101-2-3-5-1-3057



PLATE 58

第二地区 E地点



1101-2-3-5-1-3059



1101-2-3-5-1-3060



1101-2-3-5-1-3061



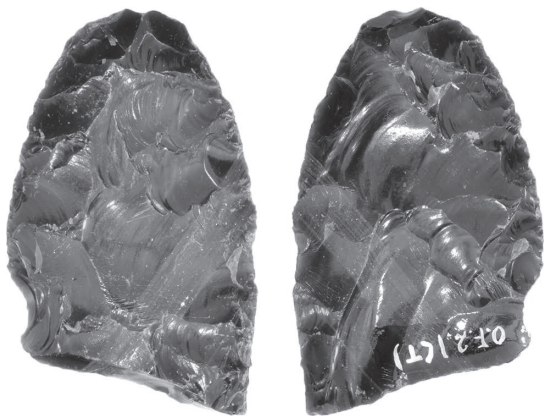
1101-2-3-5-1-3062



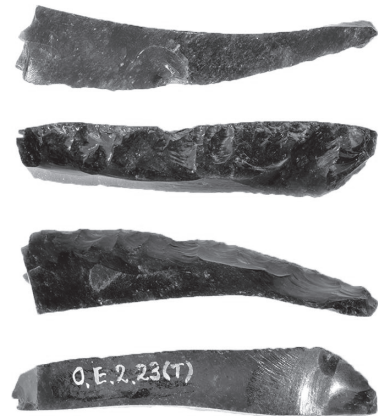
1101-2-3-5-1-3063



1101-2-3-5-1-3064



1101-2-3-5-1-3068



1101-2-3-5-1-3069

