



Title	Sulfurivermis fontis gen. nov., sp nov., a sulfur-oxidizing autotroph, and proposal of Thioprofundaceae fam. nov
Author(s)	Kojima, Hisaya; Watanabe, Miho; Fukui, Manabu
Citation	International journal of systematic and evolutionary microbiology, 67(9), 3458-3461 <a href="https://doi.org/10.1099/ijsem.0.002137">https://doi.org/10.1099/ijsem.0.002137</a>
Issue Date	2017-09-01
Doc URL	<a href="http://hdl.handle.net/2115/71400">http://hdl.handle.net/2115/71400</a>
Type	article (author version)
Additional Information	There are other files related to this item in HUSCAP. Check the above URL.
File Information	Supplementary_3.pdf



[Instructions for use](#)

Supplementary material

*Sulfurivermis fontis* gen. nov., sp. nov., a novel sulfur-oxidizing autotroph, and proposal of *Thioprofundaceae* fam. nov.

Hisaya Kojima\*<sup>1</sup>, Miho Watanabe<sup>1,2</sup> and Manabu Fukui<sup>1</sup>

1. The Institute of Low Temperature Science, Hokkaido University. Kita-19, Nishi-8, Kita-ku, Sapporo 060-0819, Japan

2. Postdoctoral Research Fellow of the Japan Society for the Promotion of Science, Chiyoda-ku, Tokyo 102-8471, Japan

\*Corresponding author. E-mail: kojimah@pop.lowtem.hokudai.ac.jp

---

Fig. S1. Phase-contrast micrograph of strain JG42<sup>T</sup>. Bar, 5 μm.

Fig. S2. Maximum-likelihood tree showing the phylogenetic position of JG42<sup>T</sup> within the order *Chromatiales* based on the 16S rRNA gene sequence analysis. Bootstrap values based on 1,000 resampling (%) are shown at nodes.

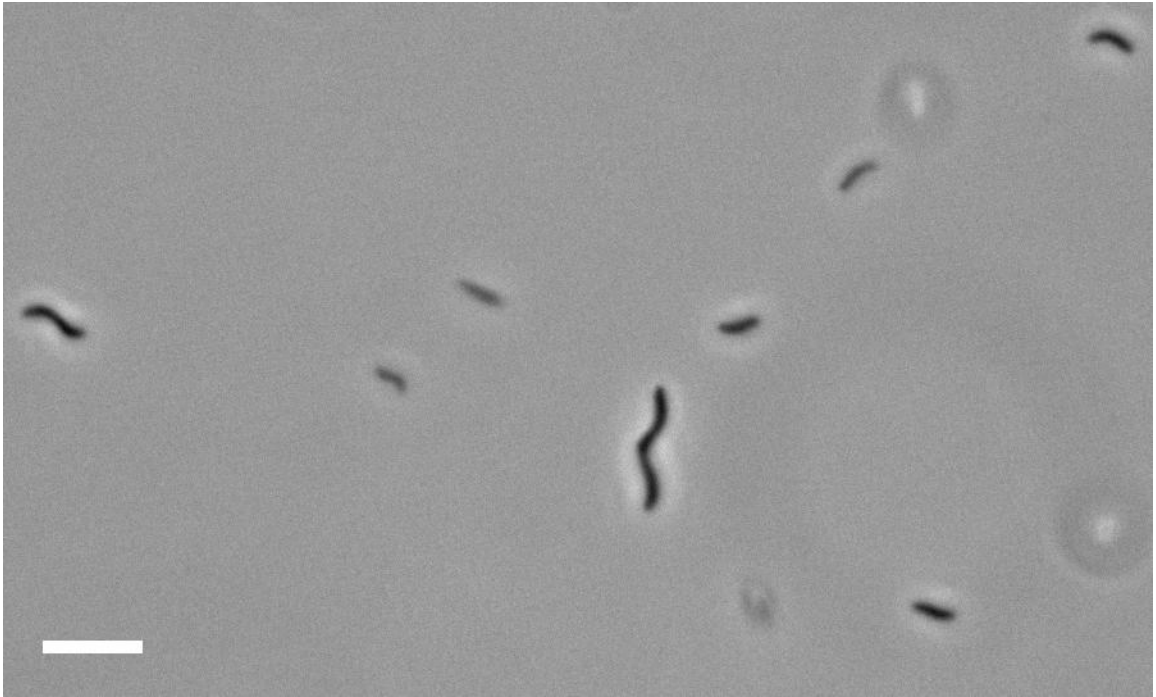
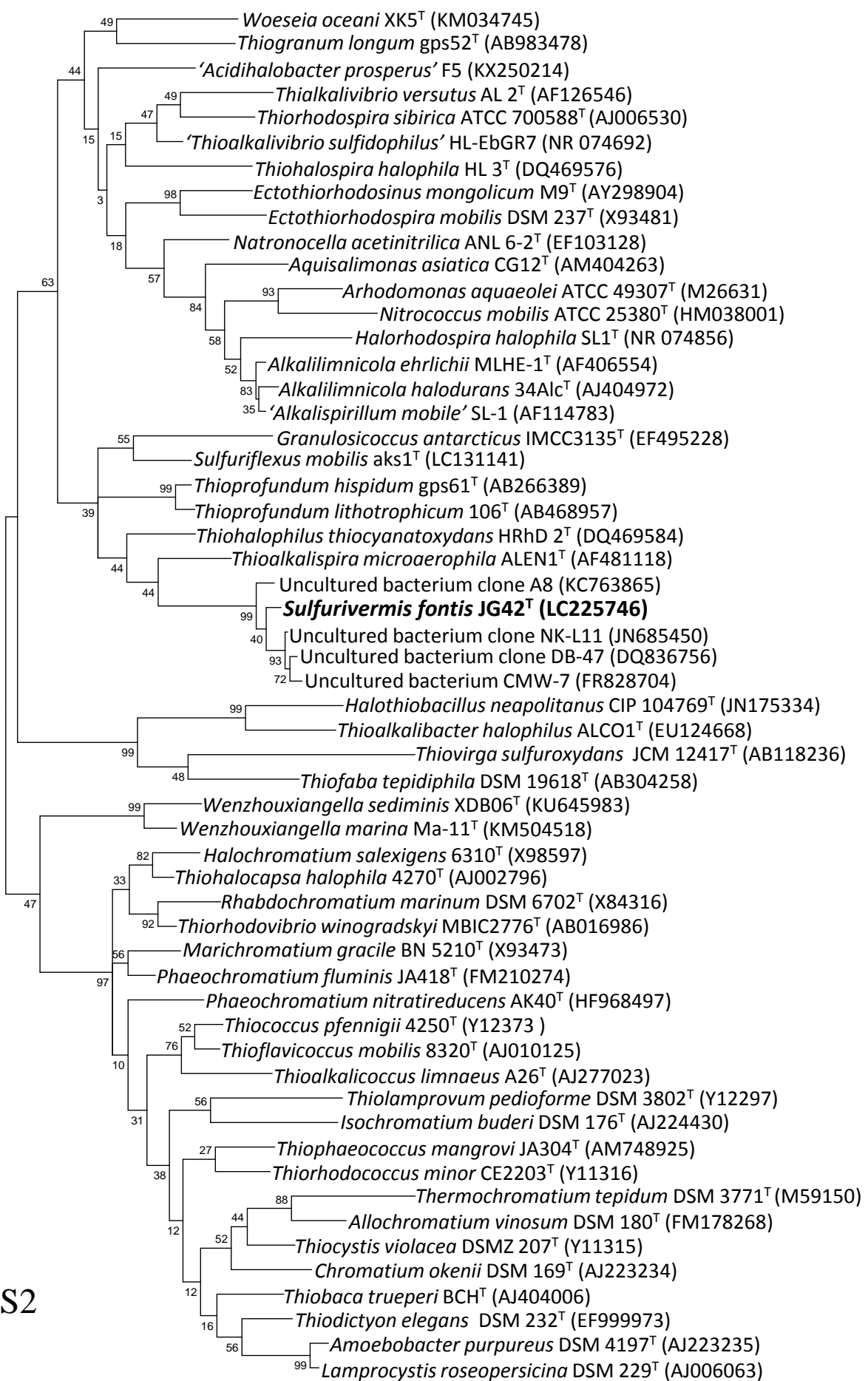


Fig. S1



0.02

Fig. S2