

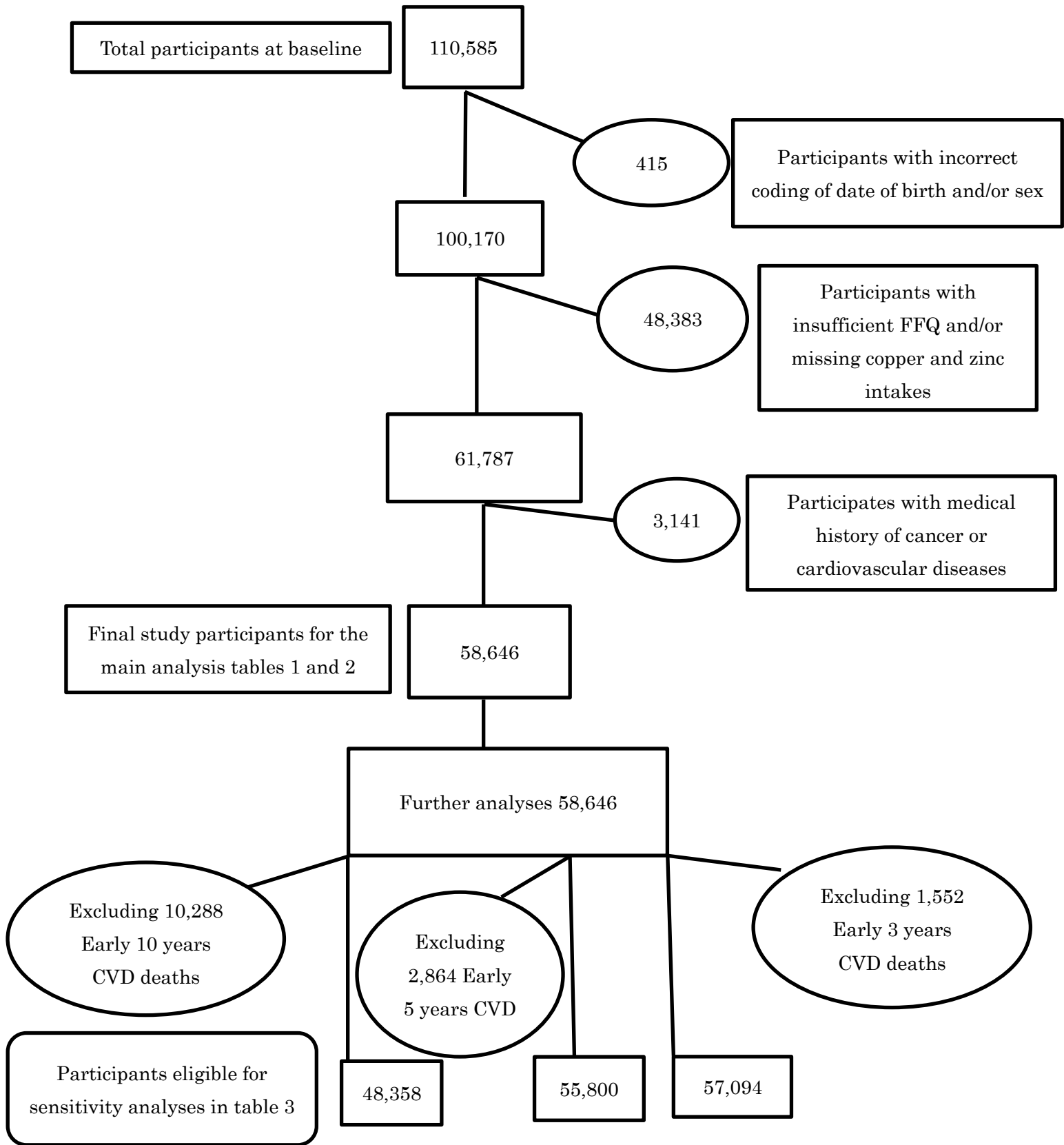


<b>Title</b>	Dietary intakes of fat soluble vitamins as predictors of mortality from heart failure in a large prospective cohort study
<b>Author(s)</b>	Eshak, Ehab S.; Iso, Hiroyasu; Yamagishi, Kazumasa; Cui, Renzhe; Tamakoshi, Akiko
<b>Citation</b>	Nutrition, 47, 50-55 <a href="https://doi.org/10.1016/j.nut.2017.09.009">https://doi.org/10.1016/j.nut.2017.09.009</a>
<b>Issue Date</b>	2018-03
<b>Doc URL</b>	<a href="http://hdl.handle.net/2115/72728">http://hdl.handle.net/2115/72728</a>
<b>Rights</b>	© 2018. This manuscript version is made available under the CC-BY-NC-ND 4.0 license <a href="http://creativecommons.org/licenses/by-nc-nd/4.0/">http://creativecommons.org/licenses/by-nc-nd/4.0/</a>
<b>Rights(URL)</b>	<a href="http://creativecommons.org/licenses/by-nc-nd/4.0/">http://creativecommons.org/licenses/by-nc-nd/4.0/</a>
<b>Type</b>	article (author version)
<b>Additional Information</b>	There are other files related to this item in HUSCAP. Check the above URL.
<b>File Information</b>	1-s2.0-S0899900717302101-mmc1.pdf (Supplemental material)



[Instructions for use](#)

Supplemental Figure I. Participants' flow chart



**Supplemental Table 1. Sex-specific associations between dietary intakes of fat soluble vitamins and risk of heart failure mortality after excluding mortality within the first 3, 5 and 10 years of follow-up.**

	Men						Women					
	1(low)	2	3	4	5(high)	P-trend	1(low)	2	3	4	5(high)	P-trend
<b>Vitamin A</b> , cases, n	39	34	49	67	51		66	76	70	53	62	
HR (95% CI) <sup>a</sup>	1.00	0.83 (0.51-1.36)	1.14 (0.70-1.85)	1.40 (0.85-2.32)	0.96 (0.60-1.62)	0.16	1.00	1.11 (0.77-1.60)	1.05 (0.71-1.55)	0.83 (0.54-1.29)	1.23 (0.80-1.89)	0.33
3-y exclusion, cases, n	31	27	42	54	43		60	70	65	47	58	
HR (95% CI) <sup>a</sup>	1.00	0.88 (0.50-1.53)	1.31 (0.76-2.27)	1.53 (0.85-2.76)	1.01 (0.55-1.83)	0.28	1.00	1.32 (0.89-1.96)	1.26 (0.82-1.95)	1.01 (0.62-1.65)	1.32 (0.74-2.43)	0.21
5-y exclusion, cases, n	25	21	37	45	36		54	59	62	44	51	
HR (95% CI) <sup>a</sup>	1.00	0.80 (0.43-1.49)	1.29 (0.70-2.36)	1.35 (0.70-2.61)	0.93 (0.48-1.83)	0.59	1.00	1.37 (0.88-2.06)	1.34 (0.81-2.18)	1.08 (0.66-1.89)	1.36 (0.79-2.57)	0.15
10-y exclusion, cases, n	21	18	28	36	24		43	48	50	37	40	
HR (95% CI) <sup>a</sup>	1.00	0.88 (0.44-1.74)	1.38 (0.69-2.74)	1.58 (0.75-3.30)	0.89 (0.41-1.93)	0.79	1.00	1.18 (0.73-1.91)	1.24 (0.74-2.08)	0.99 (0.55-1.79)	1.30 (0.74-2.30)	0.42
<b>Vitamin K</b> , cases, n	35	42	53	46	64		70	60	67	55	75	
HR (95% CI) <sup>a</sup>	1.00	1.04 (0.62-1.74)	1.11 (0.67-2.11)	1.06 (0.58-1.94)	1.14 (0.59-2.23)	0.90	1.00	0.68 (0.46-1.00)	0.68 (0.44-1.04)	0.54 (0.33-0.86)	0.63 (0.38-0.94)	0.02
3-y exclusion, cases, n	29	29	42	39	58		66	53	62	52	67	
HR (95% CI) <sup>a</sup>	1.00	0.88 (0.43-1.45)	1.05 (0.55-2.03)	1.00 (0.49-2.06)	1.10 (0.49-2.47)	0.93	1.00	0.63 (0.41-0.96)	0.64 (0.40-1.03)	0.50 (0.29-0.86)	0.55 (0.30-0.91)	0.02
5-y exclusion, cases, n	24	21	34	35	50		62	47	51	46	64	
HR (95% CI) <sup>a</sup>	1.00	0.58 (0.29-1.17)	0.81 (0.39-1.70)	0.81 (0.36-1.82)	0.82 (0.34-2.00)	0.83	1.00	0.62 (0.39-0.96)	0.58 (0.35-0.97)	0.48 (0.27-0.84)	0.56 (0.30-0.94)	0.01
10-y exclusion, cases, n	23	18	22	26	38		48	35	44	42	49	
HR (95% CI) <sup>a</sup>	1.00	0.52 (0.25-1.09)	0.54 (0.23-1.24)	0.62 (0.25-1.53)	0.67 (0.24-1.82)	0.64	1.00	0.62 (0.37-1.03)	0.65 (0.36-1.02)	0.53 (0.28-0.90)	0.50 (0.24-0.90)	0.03
<b>Vitamin E</b> , cases, n	32	47	50	43	68		76	54	62	76	59	
HR (95% CI) <sup>a</sup>	1.00	1.35 (0.74-2.45)	1.11 (0.63-2.34)	0.87 (0.49-1.68)	0.99 (0.64-1.62)	0.20	1.00	0.65 (0.41-1.02)	0.65 (0.39-1.04)	0.76 (0.47-1.04)	0.57 (0.29-0.98)	0.04
3-y exclusion, cases, n	25	35	41	34	62		71	46	59	70	54	

HR (95% CI) <sup>a</sup>	1.00	1.31 (0.64-2.68)	1.02 (0.41-2.53)	0.53 (0.18-1.58)	0.56 (0.16-1.97)	0.11	1.00	0.61 (0.37-1.00)	0.69 (0.37-1.03)	0.80 (0.38-1.07)	0.60 (0.24-0.97)	0.05
5-y exclusion, cases, n	17	29	34	28	56		67	39	50	64	50	
HR (95% CI) <sup>a</sup>	1.00	1.90 (0.87-4.59)	1.72 (0.60-4.95)	0.95 (0.27-3.33)	1.31 (0.32-5.42)	0.61	1.00	0.57 (0.34-0.97)	0.68 (0.35-1.01)	0.86 (0.39-1.09)	0.65 (0.25-0.96)	0.05
10-y exclusion, cases, n	17	22	25	20	43		50	29	43	54	42	
HR (95% CI) <sup>a</sup>	1.00	1.77 (0.72-4.33)	1.74 (0.54-5.57)	0.93 (0.22-3.86)	1.39 (0.028-7.02)	0.70	1.00	0.62 (0.37-1.03)	0.64 (0.36-1.05)	0.53 (0.28-0.98)	0.50 (0.24-0.97)	0.04
<b>Vitamin D</b> , cases, n	47	36	39	46	72		78	67	65	54	63	
HR (95% CI) <sup>a</sup>	1.00	0.67 (0.42-1.08)	0.62 (0.36-1.06)	0.67 (0.37-1.22)	0.85 (0.44-1.65)	0.92	1.00	0.78 (0.55-1.09)	0.83 (0.49-1.17)	0.63 (0.33-0.92)	0.69 (0.39-0.99)	0.05
3-y exclusion, cases, n	34	30	31	37	65		71	62	61	49	57	
HR (95% CI) <sup>a</sup>	1.00	0.80 (0.46-1.37)	0.73 (0.39-1.34)	0.79 (0.40-1.56)	1.11 (0.52-2.34)	0.44	1.00	0.84 (0.57-1.12)	0.85 (0.56-1.21)	0.59 (0.36-0.97)	0.70 (0.40-0.98)	0.05
5-y exclusion, cases, n	28	25	27	29	55		67	53	57	42	51	
HR (95% CI) <sup>a</sup>	1.00	0.82 (0.45-1.48)	0.76 (0.39-1.48)	0.74 (0.35-1.58)	1.09 (0.48-2.48)	0.50	1.00	0.75 (0.51-1.06)	0.83 (0.53-1.18)	0.53 (0.31-0.90)	0.70 (0.37-0.95)	0.04
10-y exclusion, cases, n	24	19	19	22	43		48	44	49	34	43	
HR (95% CI) <sup>a</sup>	1.00	0.76 (0.39-1.47)	0.67 (0.31-1.45)	0.70 (0.30-1.64)	1.06 (0.42-2.68)	0.52	1.00	0.74 (0.26-1.14)	0.88 (0.56-1.14)	0.50 (0.27-0.94)	0.72 (0.32-0.91)	0.03

<sup>a</sup> Adjusted for age, histories of hypertension and diabetes, smoking status, body mass index, hours of walking, hours of sports, educational status, perceived mental stress and alcohol intake, multivitamin supplementation, quintiles of energy-adjusted sodium, calcium, potassium, saturated fatty acids, n-3 fatty acids, dietary fiber, vitamin C, total energy intakes and mutually for the other 3 fat soluble vitamins.