



Title	Host selection and ovipositor length in eight sympatric species of sculpins that deposit their eggs into tunicates or sponges
Author(s)	Awata, Satoshi; Sasaki, Haruka; Goto, Tomohito; Koya, Yasunori; Takeshima, Hirohiko; Yamazaki, Aya; Munehara, Hiroyuki
Citation	Marine biology, 166(5), 59 https://doi.org/10.1007/s00227-019-3506-4
Issue Date	2019-05
Doc URL	http://hdl.handle.net/2115/78389
Rights	The final publication is available at link.springer.com
Type	article (author version)
Additional Information	There are other files related to this item in HUSCAP. Check the above URL.
File Information	02_Figs & Tables.pdf



[Instructions for use](#)

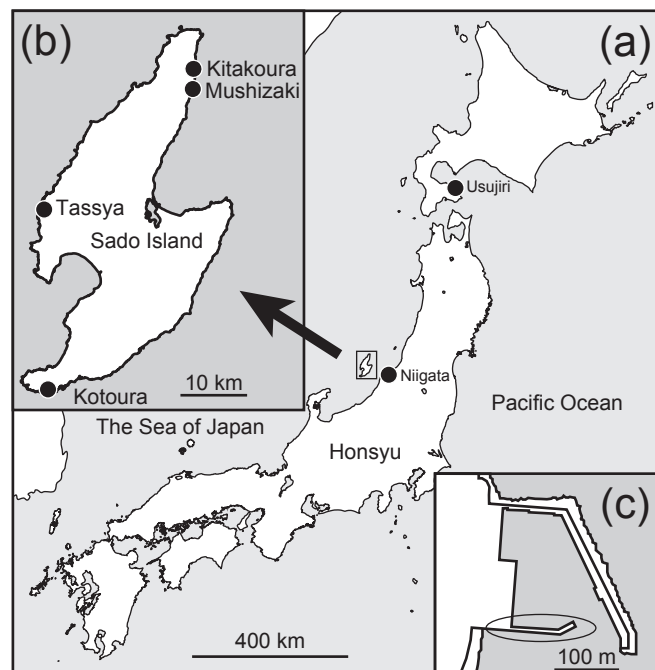


Figure 1

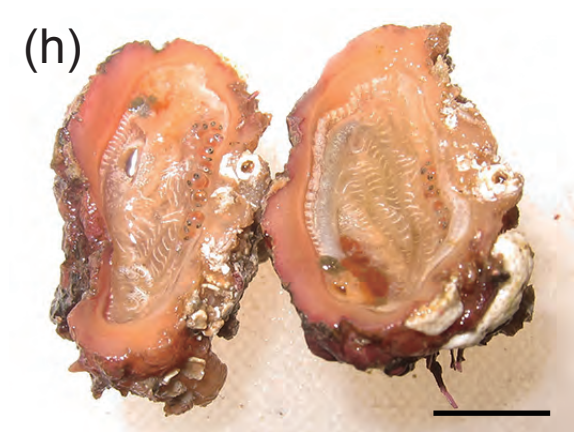
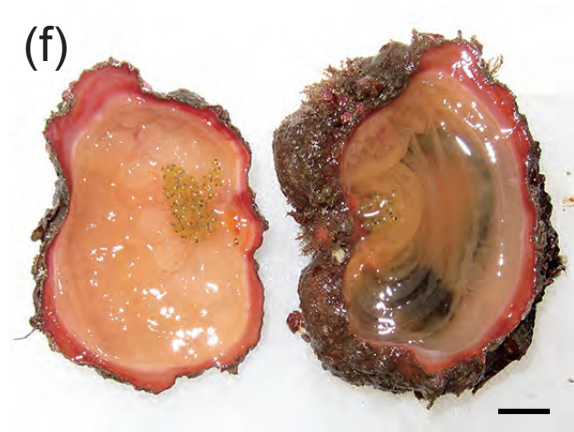
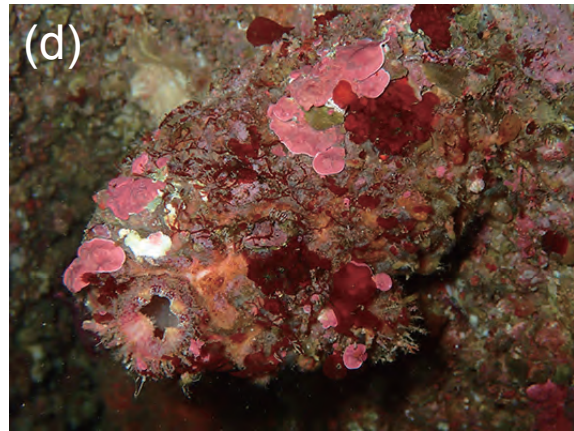
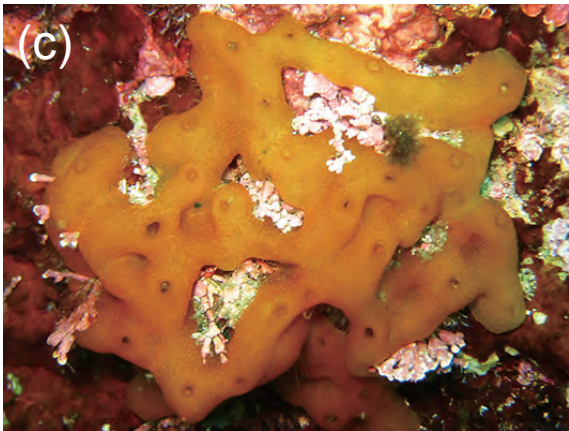
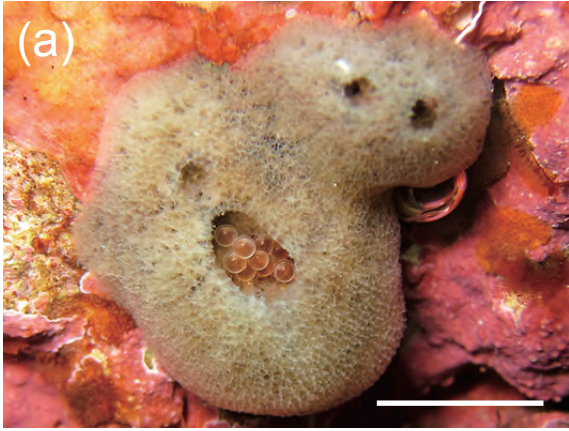


Figure 2

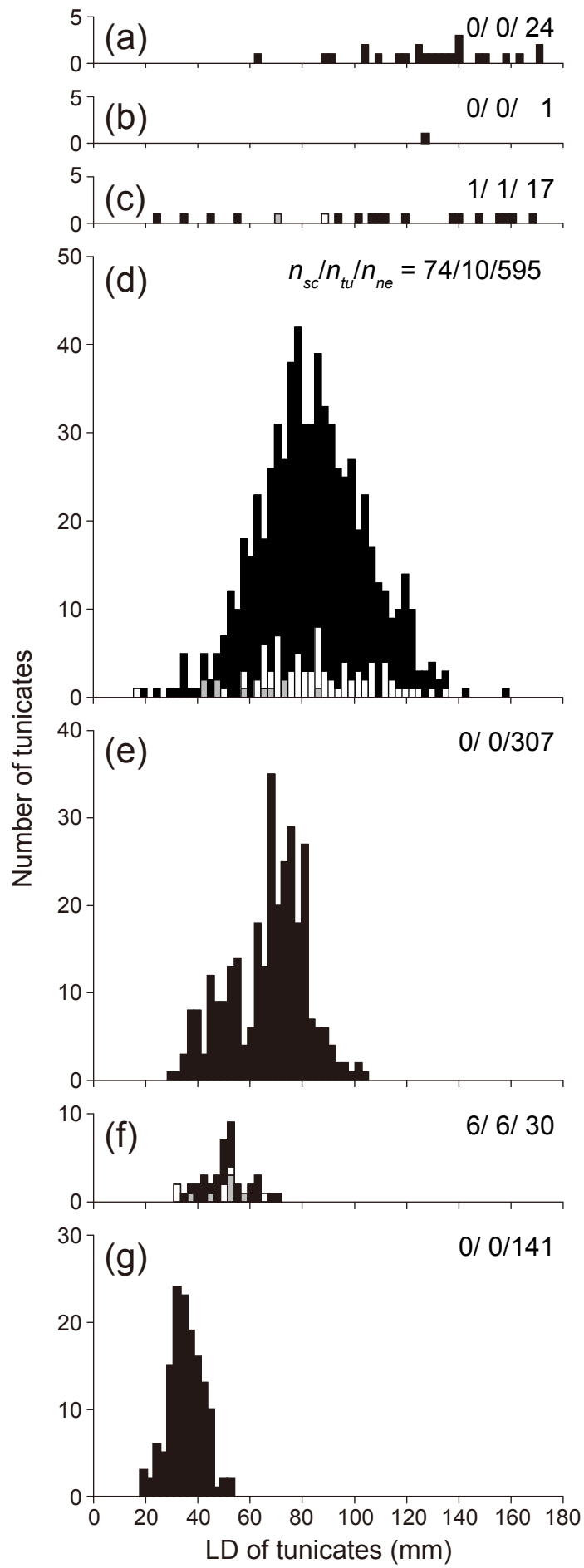


Figure 3

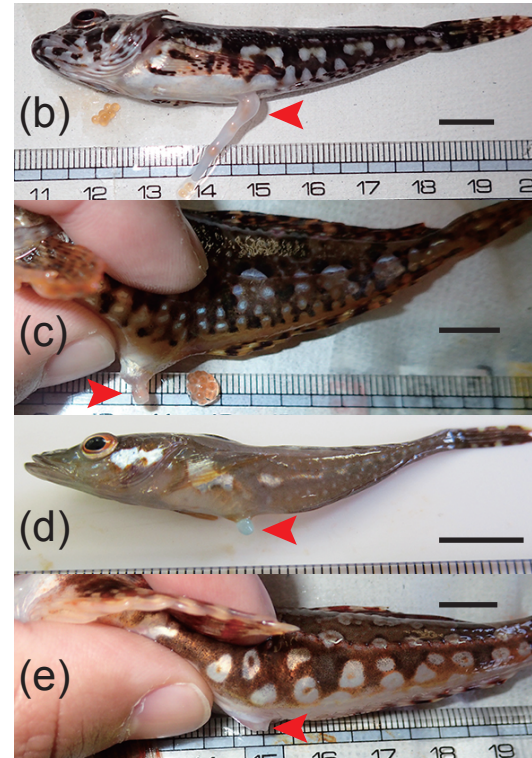
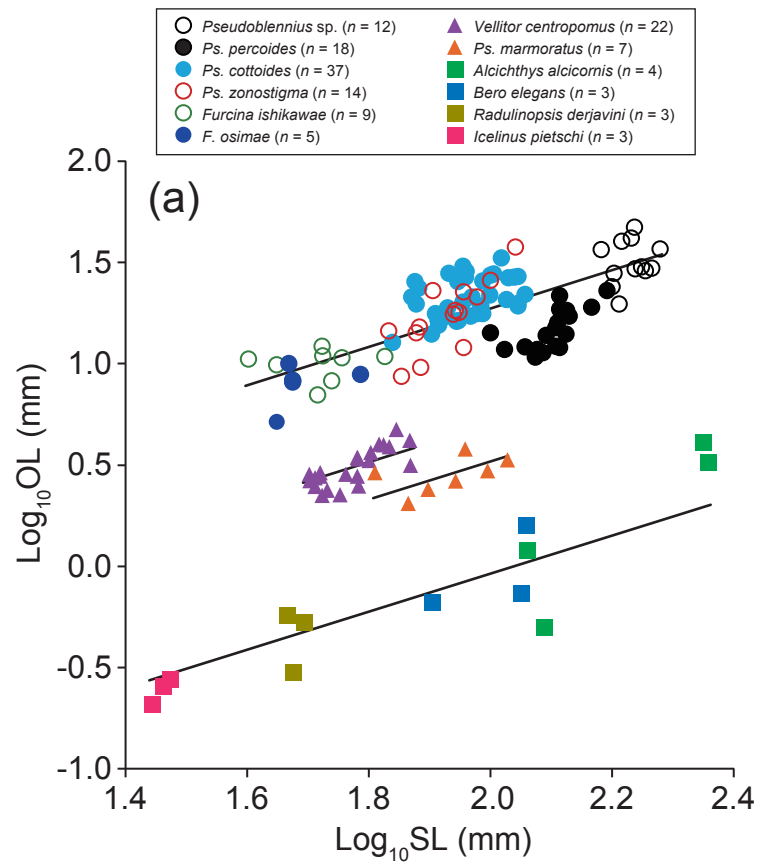


Figure 4

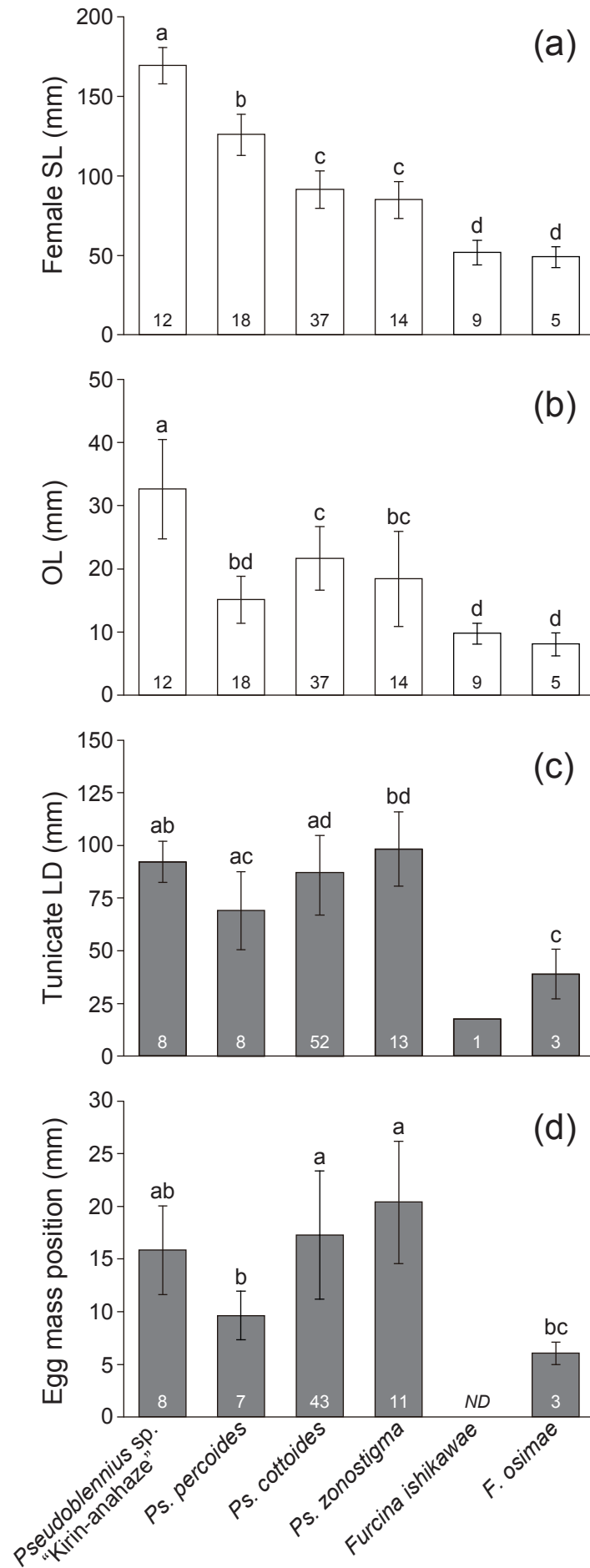


Figure 5

Table 1 Host (solitary tunicates) use by sculpins and Japanese tubesnout. The number of tunicates where single, double and triple clutches of fish were found is shown in parenthesis.

Host tunicate species	Total number of tunicates	Total number of tunicates with sculpin egg masses	Number of tunicates used by sculpins							Number of tunicates used by <i>Aulichthys japonicus</i>
			<i>Pseudoblennius cottoides</i>	<i>Ps. zonostigma</i>	<i>Pseudoblennius</i> sp. "Kirin-anahaze"	<i>Ps. percoides</i>	<i>Furcina osimae</i>	<i>F. ishikawae</i>	Unidentified	
<i>Halocynthia Ritteri</i>	678	75 (69, 5, 1)	46 (42, 3, 1)	11 (9, 2, 0)	8	6	0	1	3	10 (9, 1, 0)
<i>Polycarpa cryptocarpa kroboja</i>	307	0	0	0	0	0	0	0	0	0
<i>Cnemidocarpa irene</i>	141	0	0	0	0	0	0	0	0	0
<i>Pyura sacciformis</i>	42	6	1	0	0	2	3	0	0	6 (5, 0, 1)
<i>Microcosmus hartmeyeri</i>	24	0	0	0	0	0	0	0	0	0
<i>Halocynthia roretzi</i>	19	1	0	0	1	0	0	0	0	1
<i>Herdmania japonica</i>	1	0	0	0	0	0	0	0	0	0
Total	1212	82 (76, 5, 1)	47 (43, 3, 1)	11 (9, 2, 0)	9	8	3	1	3	17 (15, 1, 1)