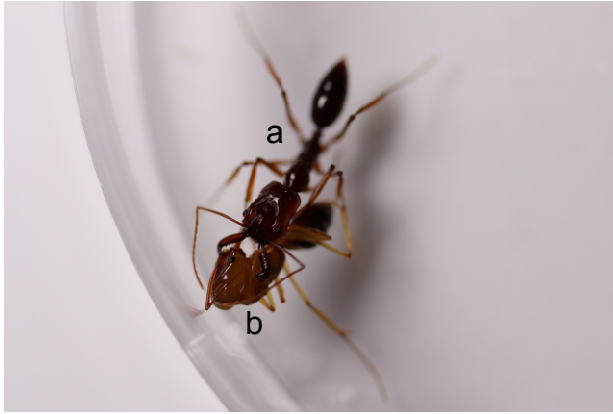




| | |
|------------------------|--|
| Title | Serotonergic control in initiating defensive responses to unexpected tactile stimuli in the trap-jaw ant <i>Odontomachus kuroiwae</i> |
| Author(s) | Aonuma, Hitoshi |
| Citation | Journal of experimental biology, 223(19), jeb228874 https://doi.org/10.1242/jeb.228874 |
| Issue Date | 2020-10 |
| Doc URL | http://hdl.handle.net/2115/82905 |
| Type | article (author version) |
| Additional Information | There are other files related to this item in HUSCAP. Check the above URL. |
| File Information | S3_Newly hatched.pdf (Supplementary Information (Fig S1)) |



[Instructions for use](#)

A**B**

S3. Aged worker and newly emerged worker. **A:** An aged worker (a) hold a newly emerged worker (b) using mandibles. **B:** The body color of aged worker (a) is much darker than that of newly emerged worker (b).