



Title	Selection of nuclear genotypes associated with the thermo-sensitivity of Owen-type cytoplasmic male sterility in sugar beet (<i>Beta vulgaris</i> L.)
Author(s)	Matsuhira, Hiroaki; Kitazaki, Kazuyoshi; Matsui, Katsunori; Kubota, Keisi; Kuroda, Yosuke; Kubo, Tomohiko
Citation	Theoretical and Applied Genetics, 135, 1457-1466 https://doi.org/10.1007/s00122-022-04046-7
Issue Date	2022-02-11
Doc URL	http://hdl.handle.net/2115/84069
Rights	The final publication is available at link.springer.com .
Type	article (author version)
Note	メタデータ先行公開
Additional Information	There are other files related to this item in HUSCAP. Check the above URL.
File Information	Fig_S1.pdf



[Instructions for use](#)

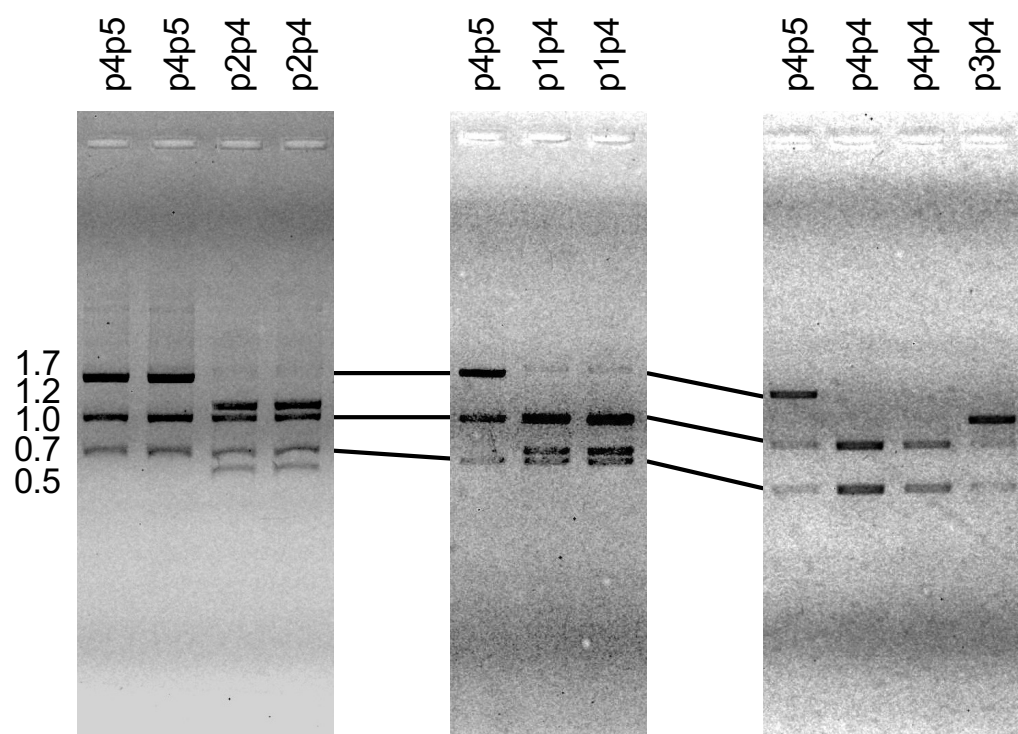


Fig. S1 DNA fragment patterns of the s17 DNA marker. Pattern names are denoted at the top of the gel images. Size markers are shown on the left.