



Title	Four new Species of Necydalis from Japan
Author(s)	Matsumura, S.; Tamanuki, K.
Citation	Insecta matsumurana, 1(4), 175-177
Issue Date	1927-05
Doc URL	<a href="http://hdl.handle.net/2115/9121">http://hdl.handle.net/2115/9121</a>
Type	bulletin (article)
File Information	1(4)_p175-177.pdf



[Instructions for use](#)

FOUR NEW SPECIES OF NECYDALIS  
FROM JAPAN.

By

PROF. DR. S. MATSUMURA and K. TAMANUKI.

In the Entomological Museum of the Hokkaido Imperial University, the following 8 species are preserved, of which 4 are new to science:

<i>Necydalis solida</i>	BATES	(Hokkaido)
<i>N. nikkoensis</i>	n. sp.	(Honshu)
<i>N. towadensis</i>	n. sp.	(Honshu)
<i>N. pennata</i>	LEWIS	(Hokkaido, Honshu)
<i>N. ebenina</i>	BATES	(Hokkaido)
<i>N. harmandi</i>	PIC	(Honshu)
<i>N. galloisi</i>	n. sp.	(Honshu)
<i>N. sachalinensis</i>	n. sp.	(Saghalien)

1. *Necydalis nikkoensis* n. sp.

Closely allied to *N. ulmi* CHEVR., but differs from it as follows:

♀. Elytron at the apex with a fuscous patch; clypeus and labrum reddish yellow; antennae, except the basal 4 joints and the basal  $\frac{3}{4}$  of the 5th, which are reddish yellow, fuscous; the middle tibia entirely reddish yellow, lacking the black ring, the hind tibia not infuscated at the apex; abdomen at the venter reddish yellow, only the last segment on the sides and the hind margin being fuscous.

Length:—♀ 24 mm.

Hab.—Honshu (Nikko); one female specimen was collected on July 21, 1917, by E. GALLOIS at Chuzenji.

2. *Necydalis towadensis* n. sp.

Closely allied to *N. nikkoensis* MATS. et TAMAN., but differs from it as follows:

♀. Body much slenderer, with finer punctation on the head and thorax; eyes reddish brown; antennae, except the basal 4 joints and the basal half of the 5th which are yellowish, fuscous; elytron yellowish, lacking the fuscous patch at the apex, with short yellow-

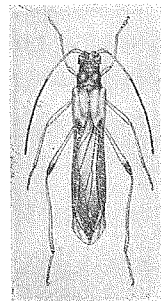


Fig. 1.

*Necydalis nikkoensis*  
MATS. et  
TAMAN. (♀)

ish hair, towards the innerside with a fine longitudinal keel from the base to before the middle, and being less densely punctated; clypeus, labrum and legs yellow; the black part of the hind femur at the apex larger, the hind tibia at the apex with a fuscous patch; abdomen at the venter largely fuscous, a basal patch on each side and a medial band on each of the first 2 basal segments reddish yellow.

Length.—♀ 20 mm.

Hab.—Honshu (Towada); one female specimen was collected on the latter part of July, 1905, by S. MATSUMURA.

### 3. *Necydalis galloisi* n. sp.

Closely allied to *N. pennata* LEWIS, but differs from it as follows:

♂. Eyes reddish brown; the first 4 joints and the basal part of the 5th joint of the antenna largely reddish yellow on the outside; palpi, clypeus and labrum largely reddish yellow; scapus, head and prothorax less densely and finer punctated; elytron infuscated at the apex, much narrower towards the apex and where the punctation is much finer, with short yellowish hair; abdomen at the venter preponderately reddish yellow, only the last 2 segments on each side, the hind margin of the penultimate segment and a middle stripe of the ultimate being fuscous; the hind femur at the apical  $\frac{1}{3}$  black.

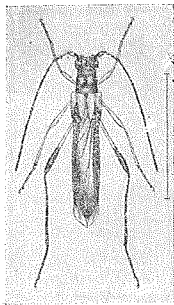


Fig. 2.

*Necydalis galloisi*  
MATS. et

TAMAN. (♂)

Length:—♂ 6-14 mm.

Hab.—Honshu (Nikko); 4 male specimens were collected on July 23, 1915, by E. Gallois at Chuzenji.

### 4. *Necydalis sachalinensis* n. sp.

Closely allied to *N. galloisi* MATS. et TAMAN.

♀. Black, antennae fuscous, each scapus at the apex reddish brown; palpi yellowish, clypeus and labrum reddish yellow; head and scapus moderately punctated; thorax shining, on each side with a low protuberance, on the anterior border only scarcely punctated; scutellum fuscous, very fine punctated; elytron dark yellow, with some fuscous shadows on the shoulder, rugosely and shallowly punctated, at the apex infuscated and where is very fine punctated; abdomen at the venter shining, fine punctated, the last segment as long as the penultimate segment; legs reddish brown, the coxae and the middle as well as the hind tibiae, except both ends, fuscous, the hind tarsi being yellowish.

Length:—♀ 16-17 mm.

Hab.—Saghalien; 3 female specimens were collected in July at Ichinosawa, Furumaki and Higashisakotan by T. ADACHI, S. ISSHIKI and S. MATSUMURA.

摘 要

本邦に産するホソコバネカミキリ属の天牛は従来四種知られありたれども、茲に更に四の新種を加へて八種となりたり。之等の學名、和名及び其の分布を示せば次の如し。

- |    |                               |                     |           |
|----|-------------------------------|---------------------|-----------|
| 1. | <i>Necydalis solida</i> BATES | オホホソコバネ(カミキリ)       | 樺太、北海道、本州 |
| 2. | <i>N. nikkoensis</i> MATS.    |                     |           |
|    | et TAMAN. (n. sp.)            | ニツコウホソコバネ(カミキリ)(新稱) | 本州        |
| 3. | <i>N. towadensis</i> MATS.    |                     |           |
|    | et TAMAN. (n. sp.)            | トツダホソコバネ(カミキリ)(新稱)  | 本州        |
| 4. | <i>N. pennata</i> LEWIS       | ホソコバネカミキリ           | 北海道、本州    |
| 5. | <i>N. ebenina</i> BATES       | ツヤホソコバネ(カミキリ)       | 北海道       |
| 6. | <i>N. harmandi</i> PIC        | クロホソコバネ(カミキリ)(新稱)   | 本州        |
| 7. | <i>N. galloisi</i> MATS.      |                     |           |
|    | et TAMAN. (n. sp.)            | ガロアホソコバネ(カミキリ)(新稱)  | 本州        |
| 8. | <i>N. sachalinensis</i> MATS. |                     |           |
|    | et TAMAN. (n. sp.)            | カラフトホソコバネ(カミキリ)(新稱) | 樺太        |

BEITRAG ZU DEN  
RHIPIPHORIDEN-ARTEN VON JAPAN.

VON

HIROMICHI KÔNO.

In Japan sind bis jetzt nur 6 Rhipiphoriden-Arten bekannt, die von den Herren S. A. DE MARSEUL<sup>1)</sup>, E. v. HAROLD<sup>2)</sup>, S. MATSUMURA<sup>3)</sup> und M. PIC<sup>4)</sup> beschrieben wurden. Ausserdem habe ich in dieser Zeit eine Art *Metoecus paradoxus* LINNAEUS, die für Japan neu ist, und zwei neue Arten, welche in dieser Gelegenheit veröffentlichen wollen, gefunden.

1) Ann. Soc. Ent. Fr., 5, VI (1876).

2) Deut. Ent. Zeit., XXII (1878).

3) Thous. Ins. Jap., IV (1906); Schäd. Ins. Jap., II (1915).

4) Échange, XXVI (1910).