



Title	Three new Lasiocampid-Moths
Author(s)	Matsumura, S.
Citation	Insecta matsumurana, 2(3), 119-121
Issue Date	1928-02
Doc URL	<a href="http://hdl.handle.net/2115/9140">http://hdl.handle.net/2115/9140</a>
Type	bulletin (article)
File Information	2(3)_p119-121.pdf



[Instructions for use](#)

## THREE NEW *LASIOCAMPID*-MOTHS

By

PROF. DR. S. MATSUMURA

### *Metanastria takamukuana* n. sp.

Closely allied to *M. subpurpurea* BTLR., but differs from it as follows:

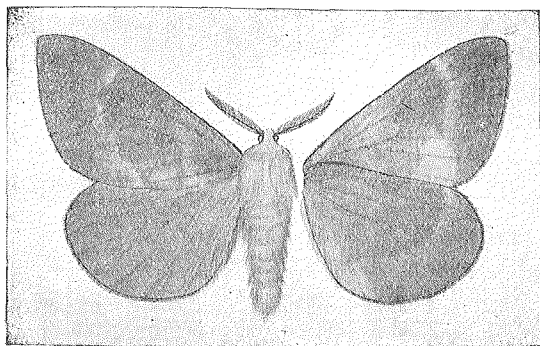


Fig. 1.

*Metanastria takamukuana* MATS. (♂)

with the ground colour; at the dorsum near the base with only a few yellowish hair. Underside paler in colour, postmedial line somewhat nearer to termen than as in *subpurpurea*; transparent patch near the tornus to primaries distinctly larger than that of *subpurpurea*. Head and thorax mostly covered with yellowish hair, mixing a few brownish hair. Exp. 66 mm.

Hab.—Honshu; one male specimen was collected on the 29th of July, 1916, by T. TAKAMUKU at Mt. Yatsugadake in the Prov. Shinano.

### *Trichiura tamanukii* n. sp.

♂. Upperside—Primaries dark brown, with pale grayish ante- and post-medial lines; antemedial line defined outwardly by a darker line and nearly straight; postmedial line minutely wavy; terminal region beyond the postmedial line paler, being somewhat darker towards the named line; fringe checkered with gray and black. Secondaries concolorous with the primaries, with a pale postmedial line which is defined internally by an obsolete fuscous line; fringe checkered with white and black.

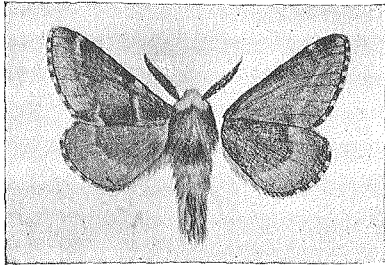


Fig. 2.

*Trichiura tamanukii* MATS. (♂)

by K. TAMANUKI at Konuma.

This resembles somewhat *T. crataegi* L.***Konokareha* (n. g.) *daisetsuzana* n. sp.**

♀. Upperside—Primaries dark gray with fuscous lines, at the base below the median vein with a short line; antemedial line somewhat wavy, on both ends becoming narrower; the discocellular spot very small and of a fuscous colour; postmedial line ex-curved at vein 4 and incurved strongly at the submedian fold, defined externally by a pale grayish line; at the dorsum with a large fuscous patch, defined outwardly by a pale grayish line which becomes a branch of the postmedial outer lining; submarginal line wavy, whitish gray, defined inwardly by a broad fuscous band; termen with the fringe black, checkered by white at the end of each longitudinal vein. Secondaries grayish, at the margin broadly infuscated.

Underside—Dark gray, primaries at the apex paler, defined inwardly by fuscous; fringe fuscous, mixing some whitish scales. Secondaries semi-opaque, near the termen with a broad fuscous band; fringe concolorous with the ground colour. Exp. 40 mm.

Hab.—Hokkaido; one female specimen was collected on the first part of July, 1927, by H. KÔNO at Mt. Daisetsu.

***Konokareha* n. g.**—♀. Eyes naked. Antennae with short branches which become gradually shorter towards the apices. Palpi short, densely pubescent, with the 3rd joint very short. Vertex simple. Primaries at the termen gently ex-curved, not crenulated, on both margins (costal and dorsal) straight;

Underside—Both wings nearly concolorous with the upperside, with each a paler postmedial line, that of the primaries at vein 6 angularly, and that of the secondaries broadly, ex-curved; fringes similar to those of the upperside. Body concolorous with the wings, being somewhat darker on the notum, with some long yellowish hair at the collum. Exp. 38 mm.

Hab.—Saghalien; one male specimen was collected on the 20th of September, 1927,

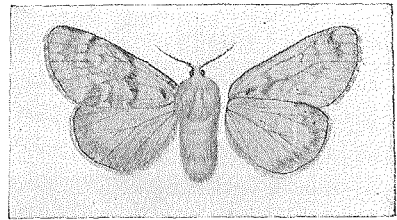


Fig. 3.

*Konokareha daisetsuzana* MATS. (♀)

with a large areole, from its apex veins 7 and 8 arising; 9 branches from 8; 10 from the middle of the areole, running closely with 8; 11 and 12 free and run nearly parallel to each other towards the termen; frenulum 2 and long. Secondaries at the termen not crenulated, at the costa being straight; vein 8 connected with 7 by a short bar near the middle of cell; 6 and 7 very short branched; 5 near the angle of cell, 3 and 4 short branched, 2 far apart from the angle; discocellulars obsolete especially on the upper half. Legs with long woolly hair, the middle tibia with one long erected spur. Abdomen at the tip with a bushy hair.

Genotype—*Konokareha daisetsuzana* MATS.

---

摘 要

*Metanastria takamukuana* MATS. タカ ムクスカシカレハ。これは嘗て鈴木元治郎氏の信州八ヶ嶽にて採集せる珍種なるが、今は高椋梯吉氏の所有せるものなり。

*Trichiura tamanukii* Mats. タマネキカレハ。これは昨年九月 玉貫光一氏が樺太小沼にて採集せる珍種なり。

*Konokareha daisetsuzana* MATS. コウノカレハ。これは昨年七月上旬大雪山にて河野廣道氏が採集せるものなり。

---

DESCRIPTIONS OF ONE NEW GENUS  
AND ONE NEW SPECIES, WITH  
FOUR UNRECORDED SPECIES OF *PHYCITINÆ*  
FROM JAPAN (LEPID.)

By

J. SHIBUYA, F. E. S.

---

Genus *Etielloides* gen. nov.

Labial palpus porrect, projecting about twice the length of head, the 3rd joint downcurved, moderately scaled; maxillary palpus of the male brush-like tufted, as long as the basal two joints of labial palpus, in the female being triangularly