



Title	A new Moth from Hokkaido
Author(s)	Matsumura, S.
Citation	Insecta matsumurana, 3(1), 35-35
Issue Date	1928-10
Doc URL	http://hdl.handle.net/2115/9158
Type	bulletin (article)
File Information	3(1)_p35-35.pdf



[Instructions for use](#)

drying of the timber in the forests or in their immediate neighbourhood.

摘 要

レンゲチナガキクヒムシ *Crossotarsus rengetensis* は臺灣の此屬中最大被害をなすものなるが、其被害樹種と状況を知る爲めに蓮華地森林に於て六十種の樹種を用ひて試験を行ひたり。其結果は樟科と山茶科のもの最も多くして同屬の虫が九州にて主として被害を及ぼす山毛櫨科に最少なるは奇と云べし。場所に關しては開放地よりは林内を好む、即ち陽光の強くして樹幹の乾燥し易きときは穿孔すること少なきが如し。此虫の穿孔の形は先づ髓線の方に進みそれより水平に曲り更に垂直に纖維の方向に柳の垂枝の如き状態をなして分枝す。穿孔の内面は黑色をなす。此聲は二層より成り、外層は所謂「アムプロシヤ」菌にして、内層は其菌糸の集合せるものなり。幼虫の食道は全く黑色の物質にて充たさる。之は生活の時に採りたる「アムプロシヤ」を其菌糸に由るものなり。故に此虫の被害を防がんとせば伐採せる木材を可及的速かに乾燥して材中の水分を除き、「アムプロシヤ」菌の繁殖を防止するを一良法とす。

A NEW MOTH FROM HOKKAIDO

By

PROF. DR. S. MATSUMURA

Brachionycha nebeculosa jezoensis n. subsp.

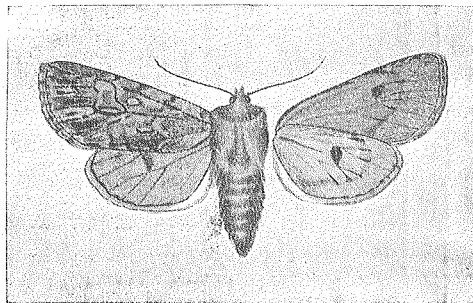
♀. From the typical *B. nebeculosa* Esp. differs in the following points:

Upperside—Primaries at the base with an excurved black subbasal line; antemedial line serrated, defined by whitly gray at the innerside; claviform at the outer end with a whitly speck; dorsum in the middle broadly infuscated; orbicular smaller; reniform larger, at its base with a downwardly curved black arc; interspaces 2, 4 and 6 filled in with each a black patch, leaving the ground colour at the termen.

♂. Paler in colour and the marking in the interspaces being smaller.

Exp.—♂ 52—♀ 54 mm.

Hab.—Hokkaido (Sapporo); 3 (1 ♂, 2 ♀) specimens were collected on the 2nd of May, 1927, at the park MARUYAMA by T. UCHIDA.



Brachionycha nebeculosa jezoensis MATS.