



Title	An Enumeration of the Coprophagid-Coleoptera from Formosa, with a Table of the geographical Distribution
Author(s)	Miwa, Yushiro
Citation	Insecta matsumurana, 4(4), 163-180
Issue Date	1930-08
Doc URL	http://hdl.handle.net/2115/9200
Type	bulletin (article)
File Information	4(4)_p163-180.pdf



[Instructions for use](#)

AN ENUMERATION OF
THE COPROPHAGID-COLEOPTERA FROM FORMOSA,
WITH A TABLE OF
THE GEOGRAPHICAL DISTRIBUTION

By

YUSHIRO MIWA
(With 3 Text Figures)

SCARABAEIDÆ
COPROPHAGIDES

Subfamily *OCHODAEINÆ* ARROW

Genus *Ochodaeus* SERVILLE

maculatus WATERHOUSE

Trans. Ent. Soc. Lond., p. 95 (1875).

Hab.—Suisharyo, Kosenpo, Arisan, Koshun, Taito.

Japanese Name—*Aka-madara-senchikogane*.

Subfamily *GEOTRUPINÆ* ERICHSON

Tribe: *BOLBOCERINI* CASTERNAU

Genus *Bolboceras* KIRBY

**quadridens* KOLBE

Stett. Ent. Zeit., LV, p. 171 (1894).

Hab.—Rokkiri.

J. N.—*Togemune-senchikogane*.

**calanus* WESTWOOD

Ann. Nat. Hist., p. 354 (1848).

Hab.—Kiirun.

J. N.—*Ô-kuriiro-senchikogane*.

Genus *Bolbocerosoma* SCHAEFFER

**nigroplagiatum* WATERHOUSE

Trans. Ent. Soc. Lond., p. 96 (1875).

Hab.—Taihoku.

J. N.—*Muneaka-senchikogane*.

* New to Formosa.

[Ins. Mats., Vol. IV, No. 4, July, 1930]

Genus *Kolbeus* BOUCOMONT*coreanus* KOLBE

Arch. Naturg., LII, p. 188, t. 11, f. 27 (1886).

Hab.—Kosenpo, Horisha.

J. N.—*Chosen-kolbekogane*.Genus *Bolbotrypes* D'OLSOUFIEFF**davidi* FAIRMAIRE

C. R. Soc. Ent. Belg., XXXV, p. 6 (1891).

Hab.—Nanto, Hoozan.

J. N.—*Eguri-senchikogane*.Tribe: *GEOTRUPINI* JEKELGenus *Geotrupes* LATREILLE*substriatellus* FAIRMAIRENotes Leyden Mus., p. 242 (Subgen. *Phelotrupes*) (1897).

Hab.—Arisan, Noko, Karenko.

J. N.—*Kuro-senchikogane*.**laevistriatus formosanus* subsp. nov. (Fig. 1)

G. laevistriatus MOTSCHULSKY is commonly found in Japan proper and distributed to South Saghalien. It was also collected from tropical Asia, and

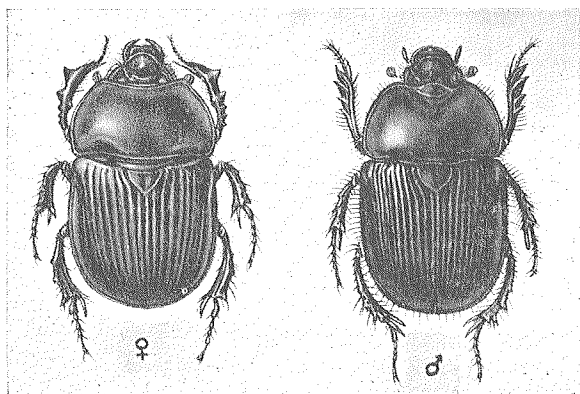


Fig. 1.

Geotrupes laevistriatus formosanus MIWA

Hab.—Arisan, Horisha, Taikokan, Rakuraku.

J. N.—*Taiwan-senchi-kogane*.

C. O. WATERHOUSE reported this species from Celebes in "Trans. Ent. Soc. Lond., p. 97 (1875)". Formosan specimens agree with those of the Japan proper in typical characteristics but the body is mostly black with purple blue shining; rather depressed and relatively wider; prothorax not wider than elytra like that of the typical *laevistriatus*. This is treated under the subgenus *Phelotrupes*.

Subfamily *COPRINÆ* PÉRINGUEY
Tribe : *SCARABAEINI* CASTERNAU
Genus *Gymnopleurus* ILLIGER

**granulatus* FABRICIUS

Ent. Syst., I, p. 65 (*Scarabaeus*) (1792).

Hab.—Rokkiri.

J. N.—*Kobu-hiratakogane*.

assamensis WATERHOUSE

Ann. Mag. Nat. Hist., (6) V, p. 411 (1890).

Hab.—Rokkiri.

J. N.—*Akagane-hiratakogane*.

sinuatus OLIVIER

Ent. I, Scarab., p. 16c, pl. 21, f. 189 (*Scarabaeus*) (1789).

Hab.—Nanto, Horisha, Musha, Koshun, Karenko, Kotosho.

J. N.—*Kuro-hiratakogane*.

**melanarius* HAROLD

Col. Heft I, p. 76 (1867).

Hab.—Nanto.

J. N.—*Tsuya-hiratakogane*.

Genus *Sisypus* LATREILLE

**indicus* HOPE

Zool. Misc., p. 22 (1831).

Hab.—Horisha.

J. N.—*Indo-ashinagakogane*.

**bowringi* WHITE

Ann. Mag. Nat. Hist., XIV, p. 423 (1844).

Hab.—Koshun.

J. N.—*Bowring-ashinagakogane*.

**longipes* OLIVIER

Ent. I, Scarab., p. 164, pl. 19, f. 177 (*Scarabaeus*) (1789).

Hab.—Ako.

J. N.—*Ashinaga-kogane*.

Genus *Panelus* LEWIS

**parvulus* WATERHOUSE

Ent. Monthl. Mag., X, p. 175 (*Tennoplectron*) (1874).

Hab.—Kankau.

J. N.—*Mamegamushi-gata-kogane*.

Tribe : *COPRINI* BURMEISTERGenus *Paraphytus* HAROLD***dentifrons** LEWIS

Ann. Mag. Nat. Hist., (6) XVI, p. 376, f. 3, 4 (1895).

Hab.—Kotosho.

J. N.—*Tsutsugata-kogane*.Genus *Synopsis* BATES***davidi** FAIRMAIRE

Ann. Soc. Ent. Fr., (5) VIII, p. 95, pl. 4, f. 5 (1878).

Hab.—Koshun.

J. N.—*David-daikoku*.Genus *Heliocopris* HOPE***midas** FABRICIUSSyst. Ent., I, p. 21 (*Copris*) (1775).

Hab.—Koshun.

J. N.—*Midas-daikoku*.Genus *Catharsius* HOPE**molossus** LINNAEUSSyst. Nat., ed. X, I, p. 347 (*Copris*) (1758).

Hab.—Taihoku, Taihorin, Horisha, Anping, Koshun.

J. N.—*Taiwan-daikoku*.***javanus** LANSBERG

Tijdschr. Ent., XXIX, p. 7 (1886).

Hab.—Gyochi, Tainan, Anping.

J. N.—*Java-daikoku*.***pithecus** FABRICIUSSyst. Ent., p. 21 (*Copris*) (1775).

Hab.—Arisan.

J. N.—*Pithecus-daikoku*.Genus *Copris* GEOFFROY***confucius** HAROLD

Ann. Mus. Civ. Genova, X, p. 48 (1877).

Hab.—Baibara, Anping, Koshun.

J. N.—*Taiwan-ko-daikoku*.

***acutidens** MOTSCHULSKY

Etud. Ent., p. 13 (1860).

Hab.—Taihoku, Shichiseiton, Kosenpo.

J. N.—*Gohon-daikoku*.

tripartitus WATERHOUSE

Trans. Ent. Soc. Lond., p. 74 (1875).

Hab.—Hoozan.

J. N.—*Ko-daikoku*.

***reflexus** FABRICIUS

Mant. Ins., I, p. 16 (*Scarabaeus*) (1787).

Hab.—Kotosho.

J. N.—*Koto-mame-daikoku*.

cariniceps FELSCHÉ

Deutsch. Ent. Zeitschr., p. 348 (1910).

Hab.—Sokutsu.

J. N.—*Sujiashi-daikoku*.

propinquus FELSCHÉ

Deutsch. Ent. Zeitschr., p. 347 (1910).

Hab.—Kosenpo, Sokutsu, Hoozan, Musha, Taiheizan.

J. N.—*Mame-daikoku*.

Tribe: *ONITINI* BURMEISTER

Genus *Onitis* FABRICIUS

***falcatus** WULFEN

Descr. Capens. Ins., p. 14, t. 2, f. 17 (*Scarabaeus*) (1786).

Hab.—Horisha.

J. N.—*Horisha-hiratadaikoku*.

***philemon** FABRICIUS

Syst. Eleuth., I, p. 30 (1801).

Hab.—Takao.

J. N.—*Philemon-hiratadaikoku*.

Tribe: *ONITICELLINI* D'ORBIGNY

Genus *Oniticellus* SERVILLE

***pallipes** FABRICIUS

Spec. Ins., I, p. 33 (*Scarabaeus*) (1781).

Hab.—Koshun.

J. N.—*Gomafu-tsunokogane*.

***sagittarius** FABRICIUS

Syst. Ent., p. 24 (*Scarabaeus*) (1775).

Hab.—Koshun.

J. N.—*Koshun-tsunokogane*.

***vertagus** FABRICIUS

Suppl. Ent. Syst., p. 30 (*Copris*) (1798).

Hab.—Horisha.

J. N.—*Kuriiro-tsunokogane*.

phanaeoides WESTWOOD

Roy. Himal. Ent., p. 55, pl. 9, f. 3 (1839).

Hab.—Sokutsu, Kankau, Kosenpo, Shinchiku, Kanshirei, Kobayashi, Rokkiri, Taito.

J. N.—*Tsuno-kogane*.

Tribe: *ONTHOPHAGINI* BOUCOMONT et GILLET

Genus **Caccobius** THOMSON

gonoderus FAIRMAIRE

Ann. Soc. Ent. Belg., XXXII, p. 17 (1888).

Hab.—Kankau, Kuraru.

J. N.—*Kiberi-emmakogane*.

Genus **Onthophagus** LATREILLE

ater WATERHOUSE

Trans. Ent. Soc. Lond., p. 76 (1875).

Hab.—Hoozan, Arisan, Horisha.

J. N.—*Kuro maru-emmakogane*.

anguicornis BOUCOMONT

Ann. Mus. Civ. Genova, XLVI, p. 211 (1914).

Hab.—Taihorin, Kosenpo.

J. N.—*Rosen-emmakogane*.

***lenzi** HAROLD

Abh. Nat. Ver. Bremen, p. 290 (1874).

Hab.—Tainan, Horisha.

J. N.—*Lenz-emmakogane*.

anguliceps BOUCOMONT

Ann. Mus. Civ. Genova, XLVI, p. 210 (1914).

Hab.—Kosenpo, Taihorin, Sokutsu, Raisha.

J. N.—*Kadoashi-emmakogane*.

angulatus REDTENBACHER

Hüger Kaschmir, p. 522, t. 24, f. 6 (1848).

Hab.—Kankau, Arisan, Rantaizan.

J. N.—*Kakumune-emmakogane*.

***nitidus** WATERHOUSE

Trans. Ent. Soc. Lond., p. 78 (1875).

Hab.—Taihoku.

J. N.—*Tsuya-emmakogane* (*Tsumamaru-maguso-kogane*).

armatus BLANCHARD

Voy. Pôle Sud., p. 98, t. 7, f. 9, 10 (1853).

Hab.—Anping, Tainan, Taihoku, Nanto.

J. N.—*Shizu-no-emmakogane*.

formosanus GILLET

Ann. Soc. Ent. Brux., XLIV, p. 67 (1924).

Hab.—Taihorin, Hoozan, Kankau, Naifunpo, Jugofunsho.

J. N.—*Taiwan-emmakogane*.

tragus FABRICIUS

Ent. Syst., I, p. 56 (*Scarabaeus*) (1792).

Hab.—Nanto, Anping, Tainan, Pilam, Taihorin.

J. N.—*Tsunobuto-emmakogane*.

turmaris GILLET

Ann. Soc. Ent. Brux., XLIV, p. 66 (1924).

Hab.—Tainan.

J. N.—*Akagane-emmakogane*.

mendicus GILLET

Ann. Soc. Ent. Brux., XLIV, p. 67 (1924).

Hab.—Taihorin, Tainan.

J. N.—*Hime-tsuya-emmakogane*.

sauteri GILLET

Ann. Soc. Ent. Brux., XLIV, p. 68 (1924).

Hab.—Sokutsu, Kosenpo, Kuraru, Kankau.

J. N.—*Sauter-emmakogane*.

nitidiceps FAIRMAIRE

Ann. Soc. Ent. Belg., XXXVII, p. 304 (1893).

Hab.—Taihorin, Tainan, Kuraru, Kankau.

J. N.—*Tsuyaashi-emmakogane*.

taurus WHITE

Ann. Mag. Nat. Hist., XIV, p. 424 (1844).

Hab.—Taihoku, Horisha, Kagi, Taihorin, Kosenpo, Tainan.

J. N.—*Semadara-emmakogane*.

***dapcauensis** BOUCOMONT

Vitalis Faune Indoch., IV, p. 30, 58, ♂ (1921).

Hab.—Tainan.

J. N.—*Chibi-emmakogane*.

trituber WIEDEMANN

Zool. Mag., II, 1, p. 17 (1823).

Hab.—Taihorin, Kosenpo, Tainan, Anping, Heito, Kankau, Horisha, Makazayazaya.

J. N.—*Mitsutoge-emmakogane*.***seniculus** FABRICIUSSpec. Ins., I, p. 23 (*Copris*) (1781).

Hab.—Koshun.

J. N.—*Akaboshi-midori-emmakogane*.***tricornis** WIEDEMANN

Zool. Mag., II, 1, p. 10 (1823).

Hab.—Taihoku, Nanto, Horisha, Rokkiri.

J. N.—*Ô-mitsuno-emmakogane*.**hirsutulus** LANSBERG

Notes Leyden Mus., V, p. 67, 70 (1883).

Hab.—Hoozan, Noko.

J. N.—*Zuguro-emmakogane*.***orientalis** HAROLD

Col., Heft IV, p. 83 (1868).

Hab.—Koshun.

J. N.—*Koshun-tsunokogane*.***proletarius** HAROLD

Col., Heft XIII, p. 89 (1875).

Hab.—Sozan.

J. N.—*Yotsumon-emmakogane*.***dama** FABRICIUSSuppl. Ent. Syst., p. 32 (*Copris*) (1798).

Hab.—Tainan.

J. N.—*Ruri-emma-kogane*.***luridipennis** BOHEMAN

Resa Eugen., p. 45 (1858).

Hab.—Horisha.

J. N.—*Aomune-emmakogane*.***lunatus** HAROLD

Col., Heft IV, p. 84 (1868).

Hab.—Horisha.


J. N.—*Hime-emmakogane*.***lutospectus** FAIRMAIRE

Bul. Soc. Ent. Fr., p. 69 (1897).

Hab.—Koshun.

J. N.—*Akamadara-emmaogane*.

sonani sp. nov. (Fig. 2)

Black, shining. Head flat, semicircularly rounded in front, with a transverse distinct carina just in the middle and a -shaped carina at the base; the space between both the carinae feebly and unevenly punctured, somewhat obliquely furrowed between each end of the anterior carina and the lateral margin; forehead very thickly and markedly rugose; anterior margin slightly reflexed and feebly emarginated at the middle. Prothorax convex and very shining, nearly as broad as long; with a transverse carina in the anterior part; carina interrupted in the centre by a faint longitudinal impression which is running in the middle of pronotum; very thickly and finely granulose-punctate, with a fovea on each hind corner along the lateral margin. Elytra rather shorter than broad, the sides gently rounded to the apex; striae not very deeply impressed and mostly impunctate; the interstices flat, rather rugosely punctured; the punctures forming irregular lines bordering the striae. Pygidium moderately convex, rather sparsely and not coarsely punctured. Legs pitchy-black; the anterior tibiae quadridentate on the outer edge. Antennae ferruginous.

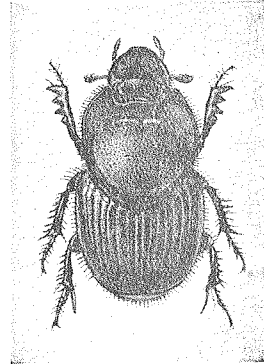


Fig. 2.

Onthophagus sonani MIWA

Length: 13 mm. Width: 7 mm.

Hab.—Funkiko 26-VIII, 1927; Rantaizan 20-V, 1928; Sikikun X, 1928 (collected by Mr. J. SONAN).

J. N.—*Sonan-emmaogane*.

This species is named in honour of its discoverer.

Genus *Trox* FABRICIUS

***obscurus** WATERHOUSE

Trans. Ent. Soc. Lond., p. 98 (1875).

Hab.—Horisha.

J. N.—*Ô-kobusujikogane*.

***opacotuberculatus** MOTSCHULSKY

Etud. Ent., IX, p. 14 (1860).

Hab.—Horisha, Arisan.

J. N.—*Hime-kobusujikogane*.

***scaber** LINNAEUS

Syst. Nat., ed. XII, p. 573 (*Scarabaeus*) (1767).

Hab.—Rokkiri, Hokko.

J. N.—*Chibi-kobusujikogane*.

chinensis BOHEMAN

Resa Eugen., p. 52 (1858).

Hab.—Pilam, Kankau.

J. N.—*Shima-kobusujikogane*.

Subfamily *APHODIINÆ* MULSANT

Group: *APHODIINA* SCHMIDT

Genus **Aphodius** ILLIGER

lewisii WATERHOUSE

Trans. Ent. Soc. Lond., p. 92 (1875).

Hab.—Kagi, Taihorin, Tainan.

J. N.—*Lewis-magusokogane*.

pilosus HAROLD

Berl. Ent. Zeitschr., XVIII, p. 183, 190 (1874).

Hab.—Musha, Baibara, Taihorin, Suisharyo, Kosenpo, Tainan.

J. N.—*Ô-magusokogane*.

***rugosostriatus** WATERHOUSE

Trans. Ent. Soc. Lond., p. 92 (1875).

Hab.—Arisan.

J. N.—*Suji-magusokogane*.

urostigma HAROLD

Berl. Ent. Zeitschr., VI, p. 170 (1862).

Hab.—Taihoku, Toihorin, Tainan, Anping, Hoozan, Kosenpo,
Kankau.

J. N.—*Magusokogane*.

lividus OLIVIER

Ent. I, 3, p. 86, pl. 26, f. 222 (*Scarabaeus*) (1789).

Hab.—Taihorin, Tainan, Pilam.

J. N.—*Usuiro-magusokogane*.

***obsoletus** WATERHOUSE

Trans. Ent. Soc. Lond., p. 88 (1875).

Hab.—Horisha.

J. N.—*Kibane-magusokogane*.

reichei HAROLD

Berl. Ent. Zeitschr., III, p. 210 (1859).

Hab.—Kosenpo, Chikutoki.

J. N.—*Reiche-magusokogane*.

moestus FABRICIUS

Syst. Eleuth., I, p. 78 (1801).

Hab.—Suisharyo, Kankau, Ako.

J. N.—*Kiberi-magusokogane*.

sinuatus HAROLD

Ann. Soc. Ent. Fr., (3) VIII, p. 614 (1860).

Hab.—Kosenpo, Koshun.

J. N.—*Chairo-magusokogane*.

australasiae BOHEMAN

Resa Eugen., p. 50 (1858).

Hab.—Horisha, Kankau.

J. N.—*Ko-kuro-magusokogane*.

carinulatus MOTSCHULSKY

Bul. Mosc., XXXVI, 2, p. 461 (1863).

Hab.—Tainan, Kotosho.

J. N.—*Mame-magusokogane*.

pallidicinctus WATERHOUSE

Trans. Ent. Soc. Lond., p. 85 (1875).

Hab.—Taihorin, Tainan, Kosenpo.

J. N.—*Chibi-magusokogane*.

marginellus FABRICIUS

Spec. Ins., I, p. 21 (*Copris*) (1781).

Hab.—Taihorin, Tainan, Anping, Kankau, Kosenpo, Kwashoto.

J. N.—*Taiwan-magusokogane*.

marginellus var. **priseus** MOTSCHULSKY

Etud. Ent., VII, p. 56 (1858).

Hab.—Taihoku, Taihorin, Kosenpo, Koshun.

***segmentaroides** SCHMIDT

Soc. Ent., XXIV, p. 11 (1909).

Hab.—Koshun.

J. N.—*Usumon-magusokogane*.

***russatus** ERICHSON

Doubl. Verz. Seneg. Ins., p. 7 (1842).

Hab.—Koshun.

J. N.—*Kisuji-magusokogane*.

***orientalis** HAROLD

Berl. Ent. Zeitschr., VI, p. 147 (1862).

Hab.—Hoozan.

J. N.—*Tsuyahada-magusokogane*.

***costatulus** SCHMIDTEntomol. Wochenbl., XXV, p. 47 (*Melinopterus*) (1908).

Hab.—Rokkiri.

J. N.—*Hime-suji-magusokogane*.***chinensis** HAROLD

Berl. Ent. Zeitschr., V, p. 105 (1861).

Hab.—Koshun.

J. N.—*Shina-magusokogane*.***elongatulus** FABRICIUS

Syst. Eleuth., I, p. 68 (1801).

Hab.—Koshun.

J. N.—*Kuriiro-magusokogane*.***crenatus** HAROLD

Berl. Ent. Zeitschr., VI, p. 141 (1862).

Hab.—Heito.

J. N.—*Kuro-magusokogane*.**globulus** HAROLD

Berl. Ent. Zeitschr., III, p. 207 (1859).

Hab.—Anping, Kotosho.

J. N.—*Semaru-magusokogane*.***sorex** FABRICIUSEnt. Syst., I, p. 23 (*Scarabaeus*) (1792).

Hab.—Arisan.

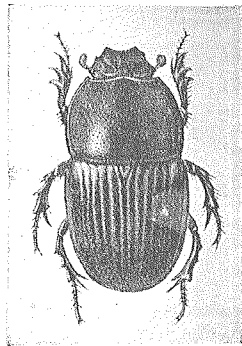
J. N.—*Ô-kibane-magusokogane*.

Fig. 3.

Aphodius kotoensis MIWA

Convex, black and shining, with somewhat piceous tinge on the elytra and more or less opalescent on the head and pronotum. Head convex, very finely and evenly punctured, with an acute projection in the middle; anterior margin depressed in the middle and slightly arcuate downwards, distinctly angulated in front of each eye. Prothorax nearly twice longer than wide; very finely, unevenly and rather irregularly punctured. Elytra rather spherically convex; the sides slightly rounded to the apex; striae rather deeply impressed, indistinctly and remotely punctured; interstices gently convex, somewhat sparingly punctured; punctures forming irregular lines along the striae. Legs pitchy-brown; anterior tibiae tridentate on the outer edge. Antennae fuscous; basal joints yellowish.

Length: $3\frac{1}{2}$ mm. Width: $2\frac{1}{4}$ mm.***kotoensis** sp. nov. (Fig. 3)

Hab.—Kotosho IV, 1920 (J. SONAN).

J. N.—*Koto-magusokogane*.

***cameratus** SCHMIDT

Entomol. Wochenbl., XXV, p. 47 (1908).

Hab.—Kotosho.

J. N.—*Maru-magusokogane*.

Group: *EUPARIINA* SCHMIDT

Genus **Saprosites** REDTENBACHER

japonicus WATERHOUSE

Trans. Ent. Soc. Lond., p. 93 (1875).

Hab.—Kosenpo, Arisan, Musha.

J. N.—*Yamato-hime-magusokogane*.

***narae** LEWIS

Ann. Mag. Nat. Hist., (6) XVI, p. 382 (1895).

Hab.—Horisha.

J. N.—*Nara-hime-magusokogane*.

Group: *PSAMMOBIINA* SCHMIDT

Genus **Psammobius** HEER

***convexus** WATERHOUSE

Trans. Ent. Soc. Lond., p. 94 (1875).

Hab.—Horisha.

J. N.—*Semaru-keshi-magusokogane*.

indicus HAROLD

Ann. Mus. Genova, X, p. 100 (1877).

Hab.—Tainan.

J. N.—*Indo-keshi-magusokogane*.

Genus **Rhyssemus** MULSANT

inscitus WALKER

Ann. Mag. Nat. Hist., (3) II, p. 207 (1858).

Hab.—Anping, Tainan, Kosenpo, Kankau.

J. N.—*Kogashira-tsutsu-magusokogane*.

Genus **Trichiorhyssemus** CLOUET

hirsutus CLOUET

Mem. Soc. Ent. Belg., VIII, p. 28, 35 (1901).

MIWA: AN ENUMERATION OF THE COPROPHAGID-COLEOPTERA FROM FORMOSA. 177

Species	Localities								Other localities	
	Japan proper	Korea	North China	South China	India	Burma	Malay	Indo-China		Sunda Islands
Subfamily <i>COPRINAE</i>										
<i>Gymnopleurus granulatus</i> FABRICIUS					x					
<i>G. assamensis</i> WATERHOUSE	x				x	x				
<i>G. sinuatus</i> OLIVIER				x	x			x	x	
<i>G. melanarius</i> HAROLD									x	
<i>Sisyphus indicus</i> HOPE					x					
<i>S. bowringi</i> WHITE				x						
<i>S. longipes</i> OLIVIER					x					
<i>S. thoracicus</i> SHARP							x		x	
<i>Panelus parvulus</i> WATERHOUSE	x									
<i>Paraphytus dentifrons</i> LEWIS										Loo-Choo (Oshima)
<i>Synopsis davidi</i> FAIRMAIRE			x	x						
<i>Helicoprís midas</i> FABRICIUS					x					Persia
<i>Catharsius molossus</i> LINNAEUS				x	x	x	x	x	x	Central Africa
<i>C. javanus</i> HAROLD								x		
<i>C. pithecius</i> FABRICIUS				x	x					
<i>Copris confucius</i> HAROLD				x						
<i>C. acutitens</i> MOISCHULSKY	x	x								
<i>C. tripartitus</i> WATERHOUSE	x									
<i>C. reflexus</i> FABRICIUS				x	x	x	x	x	x	x
<i>C. cariniceps</i> FELSCHÉ				x						
<i>C. propinquus</i> FELSCHÉ				x	x					
<i>Onitis falcatus</i> WULFEN	x	x	x	x						Nepal
<i>O. philemon</i> FABRICIUS				x	x	x	x	x	x	
<i>Oniticellus pallipes</i> FABRICIUS	x	x	x	x	x	x	x	x	x	Europe
<i>O. sagittarius</i> FABRICIUS				x	x	x	x	x	x	
<i>O. veriazus</i> FABRICIUS				x	x			x		

Species	Localities								Other localities	
	Japan proper	Korea	North China	South China	India	Burma	Malay	Indo-China		Sunda Islands
<i>Oniticellus phanaeoides</i> WESTWOOD	x				x			x		
<i>Caccobius gonoderus</i> FAIRMAIRE				x				x		
<i>Onthophagus ater</i> WATERHOUSE	x		x						x	
<i>O. anguicornis</i> BOUCOMONT								x		
<i>O. lenzi</i> HAROLD	x	x	x	x			x			
<i>O. anguiceps</i> BOUCOMONT					x					
<i>O. angulatus</i> REDTENBACHER				x	x			x		
<i>O. nitidus</i> WATERHOUSE	x							x	x	
<i>O. armatus</i> BLANCHARD										
<i>O. formosanus</i> GILLET										
<i>O. tragus</i> FABRICIUS				x	x		x	x		
<i>O. turmaris</i> GILLET										
<i>O. mendicus</i> GILLET										
<i>O. sauteri</i> GILLET										
<i>O. nitidiceps</i> FAIRMAIRE								x	x	
<i>O. taurinus</i> WHITE				x				x		
<i>O. dapecauensis</i> BOUCOMONT								x		
<i>O. trituber</i> WIEDEMANN								x	x	
<i>O. seniculus</i> FABRICIUS				x	x	x	x	x		
<i>O. tricornis</i> WIEDERMAN				x	x	x	x	x	x	
<i>O. hirsutulus</i> LANSBERG									x	
<i>O. centricornis</i> FABRICIUS				x	x			x	x	
<i>O. orientalis</i> HAROLD				x	x	x	x		x	
<i>O. proletarius</i> HAROLD				x						
<i>O. dama</i> FABRICIUS					x	x	x			
<i>O. luridipennis</i> BOHEMANN	x	x	x	x	x	x	x	x	x	x
<i>O. lunatus</i> HAROLD				x				x		

Species	Localities								Other localities
	Japan proper	Korea	North China	South China	India	Burma	Malay	Indo-China	
<i>Onthophagus lutosopictus</i> FAIRMAIRE									Loo-Choo (Ishigaki)
<i>O. sonani</i> MIWA									
Subfamily TROGINAE									
<i>Trox obscurus</i> WATERHOUSE	x		x	x				x	
<i>T. opacotuberculatus</i> MOTSCHULSKY	x				x			x	
<i>T. scaber</i> LINNAEUS	x	x	x	x	x	x	x	x	Cosmopolite
<i>T. chinensis</i> BOHEMANN				x					
Subfamily APHODIINAE									
<i>Aphodius lewisi</i> WATERHOUSE	x				x				x
<i>A. pilosus</i> HAROLD	x				x				
<i>A. rugosostriatus</i> WATERHOUSE	x	x							
<i>A. urostigma</i> HAROLD	x			x	x		x	x	
<i>A. lividus</i> OLIVIER				x	x			x	Abyssinia, Australia, Hawaii, Mexico
<i>A. obsoletus</i> WATERHOUSE	x		x						
<i>A. reichei</i> HAROLD				x	x			x	x
<i>A. moestus</i> FABRICIUS				x	x		x		Arabia, Africa
<i>A. sinuatus</i> HAROLD					x			x	x
<i>A. australasiae</i> BOHEMANN								x	Sidney
<i>A. carinulatus</i> MOTSCHULSKY					x				
<i>A. pallidicinctus</i> WATERHOUSE	x		x						
<i>A. marginellus</i> FABRICIUS				x	x	x	x	x	Africa
<i>A. marginellus</i> var. <i>priseus</i> MOTSCHULSKY					x			x	
<i>A. segmentaroides</i> SCHMIDT				x	x	x		x	x
<i>A. russatus</i> ERICHSON					x			x	Senegal
<i>A. orientalis</i> HAROLD				x				x	
<i>A. costatulus</i> SCHMIDT				x					
<i>A. chinensis</i> HAROLD				x					

Species	Localities								Other localities	
	Japan proper	Korea	North China	South China	India	Burma	Malay	Indo-China		Sunda Islands
<i>Aphodius elongatulus</i> FABRICIUS				X						
<i>A. crenatus</i> HAROLD					X	X	X	X	X	X
<i>A. globulus</i> HAROLD				X	X					
<i>A. sorex</i> FABRICIUS	X		X	X	X					Australia, Africa
<i>A. kotoensis</i> MIWA										
<i>Oxonomus camuratus</i> SCHMIDT					X					
<i>Saprosites japonicus</i> WATERHOUSE	X									
<i>S. narae</i> LEWIS	X				X		X	X	X	
<i>Psammodius convexus</i> WATERHOUSE	X				X					
<i>P. indicus</i> HAROLD					X			X		Madagascar
<i>Rhyssenus inscius</i> WALKER					X					
<i>Trichiorhyssenus hirsutus</i> CLOUET								X		
<i>Rhyparus philippinensis</i> ARROW									X	
<i>R. peninsularis</i> ARROW							X			
<i>R. telephoroides</i> FAIRMAIRE								X		

摘 要

臺灣産ダイコクコガネ類目録並びに其分布表

本篇は著者の調査を了せる臺灣産ダイコクコガネ類の總目録にして、發表せる種類は總て臺灣總督府中央研究所農業部應用動物科の標本館に藏せり。從來 ARROW, BOUCOMONT, GILLET 及び SCHMIDT 等の諸氏に依りて報告せられたる SAUTER 氏の採集個所は現在の呼稱と異れども、是等の諸氏の報告より引用せるもの、或は SAUTER 氏の採集品に依るものは其のままの呼稱にて掲げたり。本篇に枚擧せる總數百一種の内五拾六種は臺灣より未記録なりき、其の内二新種一新亞種を含む。猶未記録種には * 印を附せり。分布表に於て South China とあるは主として雲南、香港、海南島を包含し、Indo-China には佛領印度支那及びシヤムを含ましめ、Sunda Islands は東南洋諸島即ちジャバ、スマトラ、ボルネオ、セレベス等の總括なり。而して Japan proper には北海道、本州、四國、九州を代表せしむ。本報告は臺北帝大教授素木博士が伯林ダーレムの博物館にて調査せられし結果に負ふ所非常に多かりき、謹んで同教授に深謝の意を表すると共に挿圖に健筆を振はれし佐久間文吾翁の御助力を深謝す。