



Title	A new Species and a new Genus of Noctuidae from Japan
Author(s)	Matsumura, S.
Citation	Insecta matsumurana, 5(4), 210-211
Issue Date	1931-07
Doc URL	<a href="http://hdl.handle.net/2115/9223">http://hdl.handle.net/2115/9223</a>
Type	bulletin (article)
File Information	5(4)_p210-211.pdf



[Instructions for use](#)

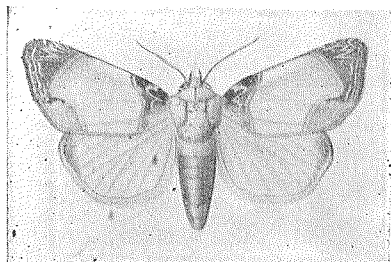
A NEW SPECIES AND A NEW GENUS  
OF NOCTUIDÆ FROM JAPAN

By

PROF. DR. S. MATSUMURA

*Noshimea* (n. g.) *fulgularis* n. sp.

Primaries grayish white, opaque, at the base and apex broadly dark brown, the latter with 3 red brownish patches in it, at the termen with 2 wavy bluish white lines, the inner one of which near the costa with a lightning-line, at the innerside of the apical patch, at the lower part of the basal patch, and at the tornus broadly, dark grayish, in the basal patch with also a lightning-line as at the apex. Secondaries silky white, at the apex narrowly fuscous; both



*Noshimea* (n. g.) *fulgularis* n. sp.

Exp.: 42 mm.

Hab.: Honshu (Aomori); one female specimen was collected at the end of July, 1930, by A. TOYOSHIMA on a branch of the willow-tree.

N. J.: *Noshime-yaga*.

*Noshimea* n. g.

Closely allied to *Sphragifera* STGR., but differs from the latter in the following points:

Thorax densely covered with very large scales, recalling somewhat the neck-feathers of a fowl, with only very few tiny hairs at the inner side of the tegula; the first abdominal segment at the dorsum with no hairy-bundle. Prima-

ries with a large areole, from the apex of it emitting veins 7+8+9, the stalk of which being quite short; at the termen in the interspaces 4 and 5 to the primaries and in the interspace 4 to the secondaries somewhat excavated; veins 4 and 5 to the secondaries distinctly stalked. Legs slender, each tibia at the hind part being less and shorter pubescent, the hind tarsus with numerous longer and robuster spines.

**Genotype:** *Noshimea fulgurialis* MATS.

## NEW SPECIES OF INSECTS FROM JAPAN DESCRIBED DURING THE YEAR 1930

### HYMENOPTERA

GUSSAKOVSKIJ, B. B.: Revue des espèces paléarctiques du genre *Priocnemis* Schdte. (Ann. Mus. Zool., Leningrad, Tom. XXXI, pp. 227-290).

*Priocnemis japonicus*, p. 252.

ONOE, T. et. YUASA, H.: *Ptilineurus marmoratus*, an Anoblid-beetle noxious to the Rush Mat, with Descriptions of a new Bethyloid Fly (Rep. Journ. Imp. Agr. Eexp. Sta. Tokyo, Vol. 1, No. 3, pp. 215-230).

*Sclerodermus nipponicus*, p. 218.

SATO, K.: A new Species of the Genus *Megaxyela* Ash. from Korea (Jour. Chosen Nat. Hist. Soc. No. XI, p. 4-8).

*Megaxyela mikado*, p. 4.

SONAN, J.: A few Host-known Ichneumonidae found in Japan and Formosa (Trans. Nat. Hist. Soc. Formosa, Vol. XX, pt. 30, pp. 268-273).

*Charops arctornisae*, p. 268; *Anilasta japonica*, p. 269; *Pezomacilius lemae*, p. 271; *Cryptus flavicoxatus*, p. 272.

—————: Some new Species of Hymenoptera in Japanese-Empire, with two known Species (Trans. Nat. Hist. Soc. Formosa, Vol. XX, No. 111, pp. 355-360).

*Odynerus (Lionotus) flavicypeatus*, p. 355; *O. (Hoplomerus) nigricypeatus*, p. 356; *Rhynchium satsumanus* p. 356; *Habrocryptus ruficoxatus*, p. 357; *Batithrix kurwanae* VIER. var. *nigrans*, p. 358; *Batithrix rufus*, p. 358; *Mecha lemae*, p. 359.

—————: A few Host-known Ichneumonidae found in Formosa (2), (Trans. Nat. Hist. Soc. Formosa, Vol. XX, No. 108, pp. 137-144).

*Ioplectis homonae*, p. 137; *Iseropus heichinus*, p. 138; *Anomalon discoidellum*, p. 139; *Limnerium homonae*, p. 140; *Cremastus shirakii*, p. 142; *Gambrus homonae*, p. 143.

TAKEUCHI, K.: A revisional List of the Japanese Pamphiliidae, with Descriptions of nine new Species (Trans. Kansai Ent. Soc., No. 1, pp. 3-16).

*Cephaleia issikii*, p. 6; *C. variegata*, p. 7; *Neurotoma atrata*, p. 8; *Pamphilus komonensis*, p. 12; *P. minomatsi* p. 12; *P. viriditibialis*, p. 13; *P. kamikochiensis*, p. 14; *P. nakagawai*, p. 15; *P. jucundus*, p. 16.

TOZAWA, N.: On *Oryssus japonicus* sp. nov. (Kontyu, Vol. IV, No. 3, pp. 160-162).

*Oryssus japonicus*, p. 160.