



Title	Lasiocampid-Moths in the Japan-Empire
Author(s)	Matsumura, S.
Citation	Insecta matsumurana, 7(1-2), 33-54
Issue Date	1932-12
Doc URL	<a href="http://hdl.handle.net/2115/9249">http://hdl.handle.net/2115/9249</a>
Type	bulletin (article)
File Information	7(1-2)_p33-54.pdf



[Instructions for use](#)

# LASIOCAMPID-MOTHS IN THE JAPAN-EMPIRE

By

Prof. S. MATSUMURA

In this occasion the author will enumerate all the known species in Japan. The citation of the names in the following enumeration are not complete owing to the want of the pages allotted to the author, and mostly the original and newest ones being only recorded.

The systematic arrangement of the species in this essay is alphabetical, owing to the difficulty of determining their affinities.

In the Japan-Empire we have 55 species of the Lasiocampid-moths under 25 genera, of which 2 are new genera and one is new species. Besides, here 10 new local forms are described.

## 1. Gen. *Amurilla* AURIV. (*Amuria* AURIV.)

### 1. *subpurpurea* BUTL.

*Poecilocampa subpurpurea* BUTL., T. E. S. Lond., p. 18 (1881).

*Lasiocampa dieckmanni* GRAES., Berl. Ent. Zeit., XXXII, p. 128 (1888).

*Amuria dieckmanni* AURIV., Deutsch. Ent. Zeit. Lep., VII, p. 153 (1894).

*Metanastria rubra* HAMP., Brit. Ind. Moth., IV, p. 488 (1896).

*Amurilla dieckmanni* AURIV., Ent. Tidskr., XXII, p. 251 (1901).

*Metanastria subpurpurea* GRÜNB., Seitz. Macrolep., ii, 161, Pl. 26, f. c. (1911); MATS., 6000 Ins. Jap., p. 690, f. 379 (1931).

This is quite common in Saghalien and Hokkaido, the female being rare.

Hab.—Saghalien, Hokkaido, Honshu, Siberia, Assam, Birma.

Nom. Jap.—*Sukashi-kareha*.

### 2. *takamukuana* MATS.

*Metanastria takamukuana* MATS., Ins. Mats., p. 119, f. 1 (1927).

One male specimen was collected on the 29th of July, 1916, by the late T. TAKAMUKU at Mt. Yatsugadake in the Prov. Shinano.

Hab.—Honshu (Shinano).

Nom. Jap.—*Takamuku-sukaslikareha*.

## 2. Gen. *Arguda* MOOR. (*Radhica* MOOR)

### 1. *flavovittata* MOOR.

*Radhica flavovittata* MOOR., Descr. Ind. Lep. Atk., p. 79 (1879).

[Ins. Mats., Vol. VII, No. 1 & 2 December 1932]

*Argula flavovittata* HAMPs., Faun. Brit. Ind. ii, p. 412, f. 284, ♀ (1892); GRÜNB., Seitz Macrolep. Palaearkt. ii, p. 179, Pl. 29, f. d (1911); GRÜNB., l. c. Ind. Austr., ii, (1921); MATS., 6000 Ins. Jap., p. 678, f. 341 (1931).

This is not rare in Horisha, being attracted by the lamp. This species was not yet reported from Formosa by any Author.

The specimen from Formosa differs much in colour, being paler and the marking is not so conspicuous as in the typical specimen, so the author proposes to give a new name for this lokal form—f. *taiwanensis* MATS. (n. f.).

Hab.—Formosa.

Nom. Jap.—*Madara-kareha*.

### 3. Gen. *Bhima* MR.

#### 1. *idiota* GRAES.

*Pyrosis idiota* GRAES., Berl. Ent. Zeitschr., xxxii, p. 131 (1888).

*Bhima idiota* GRÜNB., Seitz Macrolep. ii, p. 178, Pl. 29, f. d (1911); MATS., 6000 Ins. Jap., p. 679, f. 343, ♀ (1931).

This is not rare in Manchuria, the larva being injurious to the poplar-tree.

Hab.—Korea, Manchuria, Siberia, Europe.

Nom. Jap.—*Doro-kareha*.

### 4. Gen. *Cosmotriche* HB.

#### 1. *albomaculata* BREM.

*Odonestis albomaculata* BREM., Bull. Acad. Péters. iii, p. 479 (1861).

*Cosmotriche albomaculata* GRÜNB., Seitz Macrolep. ii, p. 164, Pl. 26, f. g (1911); MATS., 6000 Ins. Jap., p. 679, f. 344, ♀ (1931).

This is common in Japan, the larva eating the bamboo-leaves.

Hab.—Hokkaido, Honshu, China, Manchuria, Amur.

Nom. Jap.—*Tobiuro-takekareha*.

#### 2. *divisa* MOOR.

*Odonestis divisa* MOOR., P. Z. S. Lond., p. 408 (1879).

*Cosmotriche laeta* MATS., Thous. Ins. Jap. Add. IV, p. 926, Pl. 55, f. 29, ♂ (1921).

*Cosmotriche divisa* GRÜNB., Seitz Ind. Austr. Macrolep., ii, p. 407, Pl. 32, f. d (1921); MATS., 6000 Ins. Jap., p. 679, f. 345 (1931).

This is not rare in Formosa, being found in Horisha.

Hab.—Honshu, Korea, Formosa, Amur, China, India.

Nom. Jap.—*Hime-takekareha*.

a. f. *surphurea* AURIV., Iris, 7, p. 164 (1890); GRÜNB., l. c. p. 407 (1931).

The author has 3 (1 ♂, 2 ♀) specimens from Baibara and Horisha collected by Messrs. R. SAITO, K. KIKUCHI and the late T. TAKAMUKU.

Hab.—Formosa, China, N. India.

**3. *formosana* MATS.**

*Cosmotriche formosana* MATS., Thous. Ins. Jap. Add. IV, p. 908, Pl. 65, f. 16, ♂ (1921); 6000 Ins. Jap., p. 680, f. 346 (1931).

This was found at near Lake Funkiko (Arisan-region), but it seems to be rare.

Hab.—Formosa (Arisan-region).

Nom. Jap.—*Taiwan-takekareha*.

**4. *nigropuncta* WILEM.**

*Cosmotriche nigropuncta* WILEM., Ent., p. 190 (1910); GRÜNB., Seitz Ind. Austr. Macrolep. ii, p. 408 (1921).

*Cosmotriche marginalis* MATS., Thous. Ins. Jap. Add. IV, p. 909, Pl. 56, f. 18, ♂ (1921).

*Cosmotriche nigropuncta* (as *nigropunctata*) MATS., 6000 Ins. Jap., p. 680, f. 346 (1931).

This was collected in June by the author at Horisha, being not rare. WILEMAN collected this species at Kanshirei in July.

Hab.—Formosa (Horisha, Kanshirei).

Nom. Jap.—*Sotomurasaki-kareha*.

**5. *ochreipuncta* WILEM.**

*Odonestis ochreipuncta* WILEM., Ent., p. 191 (1910).

*Cosmotriche ochreipuncta* GRÜNB., Seitz Macrolep. Ind. Austr., ii, p. 407, Pl. 32, f. d (1921); 6000 Ins. Jap., p. 680, f. 348 (1931).

This is a rare species, being found only in the mountainous regions of Formosa.

Hab.—Formosa.

Nom. Jap.—*Monki-takekareha*.

**6. *potatoria* L.**

*Bombyx potatoria* L., Syst. Nat., X, p. 498 (1758).

*Cosmotriche potatoria* MATS., 6000 Ins. Jap., p. 680, f. 349 (1931).

This is very common in Hokkaido, the larva feeding on *Bambusa* and *Arundo*-spp.

Hab.—Saghalien, Hokkaido, Honshu, Korea, China, Manchuria, Europe.

Nom. Jap.—*Take-kareha*.

f. *askoldensis* OBTH., Etud. d'Ent. V, p. 28 (1881).

Hab.—Saghalien, Hokkaido, Honshu, Korea, Amur.

**7. *pyriformis* MOOR.**

*Odonestis pyriformis* MOOR., P. Z. S. Lond., p. 408, Pl. 34, f. 7 (1879).

*Cosmotriche pyriformis* GRÜNB., Seitz Indo-Austr. Macrolep., ii, p. 407, Pl. 33, f. b (1921); MATS., 6000 Ins. Jap., p. 681, f. 352 (1931).

The author has caught this species in the mountainous region of Taipin, being rare.

Hab.—Formosa, India.

Nom. Jap.—*Taiwan-hime-takekareha*.

### 8. *tamahonis* MATS.

*Cosmotriche tamahonis* MATS., Journ. Col. Agr. Hokkaido Imp. Univ., XIX, p. 21, Pl. ii, f. 13, ♂ (1927); MATS., 6000 Ins. Jap., p. 681, f. 351 (1931).

This was found by Messrs. T. UCHIDA, H. KÔNO and Y. MIWA at Tamaho (Niitaka-region), a mountainous region of Formosa.

Hab.—Formosa.

Nom. Jap.—*Tamaho-takekareha*.

## Gen. *Dendrolimus* GERM.

### 1. *albolineatus* MATS.

*Dendrolimus sibiricus* TSCHTVE. f. *albolineata* MATS., Thous. Ins. Jap. Add. IV, p. 918, Pl. 68, f. 8, ♂, 10, ♀ (1921).

*Dendrolimus albolineatus* MATS., Journ. Coll. Agr. Hokk. Imp. Univ., XVIII, p. 8, Pl. 2, f. 2, 3, 4, (1926); 6000 Ins. Jap., p. 681, f. 352 (1931).

The larva of this species is very injurious to *Abies*-spp. in Saghalien and Kuriles.

Hab.—Saghalien, Kuriles.

Nom. Jap.—*Karafuto-matsukareha*.

a. f. *albata* MATS., Journ. Coll. Agr. Hokkaido Imp. Univ., XVIII, p. 11 (1926).

Hab.—Saghalien.

b. f. *albida* MATS., Thous. Ins. Jap. Add., p. 910, Pl. 68, f. 9, ♂ (1921).

Hab.—Saghalien.

c. f. *brunneo-pallida* MATS., l. c., p. 920, Pl. 69, f. 1, ♂ (1921).

Hab.—Saghalien.

d. f. *centro-pallida* MATS., Journ. Coll. Agr. Hokkaido Imp. Univ., XVIII, p. 10, Pl. 3, f. 11, ♂ (1926).

Hab.—Saghalien.

e. f. *centro-zonalis* MATS., l. c., p. 10, Pl. 3, f. 18, ♂ (1926).

Hab.—Saghalien.

f. f. *frequens* MATS., l. c., p. 9 (1926).

Hab.—Saghalien.

g. f. *fuscolatifascia* MATS., Thous. Ins. Jap. Add., IV, p. 919, f. 7 (1921).

Hab.—Saghalien.

h. f. *ichinosawana* MATS., Jour. Coll. Agr. Hokk. Imp. Univ., XVIII, p. 10 (1926).

Hab.—Saghalien.

i. f. *kiminensis* MATS., l. c., p. 9 (1926).

Hab.—Saghalien.

j. f. *kurilensis* MATS., l. c., p. 9, Pl. 3, f. 15, ♂ (1926).

Hab.—Kuriles.

k. f. *nigribasalis* MATS., Thous. Ins. Jap. Add. VI, p. 919, Pl. 68, f. 8, ♂ (1921).

Hab.—Saghalien.

l. f. *nigriscens* MATS., Jour. Coll. Agr. Hokk. Imp. Univ., XVIII, p. 9, Pl. 3, f. 7, ♂ (1926).

Hab.—Saghalien.

m. f. *submarginata* MATS., l. c., p. 10, Pl. 3, f. 16, ♂ (1926).

Hab.—Saghalien.

#### 4. *jezoensis* MATS.

*Dendrolimus jezoensis* MATS., Thous. Ins. Jap. Add. IV, p. 912, Pl. 67, f. 1, ♀ (1921); 6000 Ins. Jap., p. 681, f. 353 (1931).

This is common in Hokkaido, the caterpillar being very injurious to *Abies* and *Picea*-spp.

Hab.—Hokkaido, Honshu.

Nom. Jap.—*jezo-matsukareha*.

There are many aberrant forms and most of them are belonging to either of the following forms:

a. f. *aino* MATS., Thous. Ins. Jap. Add. IV, Pl. 67, f. 5, ♂ (1921).

Hab.—Hokkaido.

b. f. *albescens* MATS., l. c., f. 9, ♂ (1921).

Hab.—Hokkaido.

c. f. *albofasciata* MATS., l. c., f. 8, ♂ (1921).

Hab.—Hokkaido.

d. f. *brunneata* MATS., l. c., p. 913, Pl. 68, f. 5, ♂, Pl. 70, f. 8, ♀ (1921).

Hab.—Hokkaido.

e. f. *fuscilineata* MATS., l. c., p. 913, Pl. 67, f. 3, ♂ (1921).

Hab.—Hokkaido.

f. f. *infuscatá* MATS., l. c., p. 916, Pl. 67, f. 4, ♂ (1921).

Hab.—Hokkaido.

g. f. *issihikii* MATS., l. c., p. 915, Pl. 68, f. 1, ♂ (1921).

Hab.—Honshu.

h. f. *nigrofasciata* MATS., l. c., p. 914, f. 2, ♂ (1921).

Hab.—Hokkaido.

i. f. *nohirae* MATS., l. c., p. 915, Pl. 67, f. 10, ♂ (1921).

Hab.—Hokkaido.

j. f. *obsoleta* MATS., l. c., p. 914, Pl. 68, f. 4, ♂ (1921).

Hab.—Hokkaido.

k. f. *olivacea* MATS., l. c., p. 915, Pl. 67, f. 8, ♂ (1921).

Hab.—Hokkaido.

l. f. *pallescens* MATS., l. c., p. 914, f. 2, ♂ (1921).

Hab.—Honshu.

m. f. *tenuilinea* MATS., l. c., p. 914, f. 3, ♂ (1921).

Hab.—Hokkaido.

### 3. *punctatus* Wk.

*Oeona punctata* Wk., Cat. VI, p. 1418 (1858).

*Lasiocampa remota* Wk., l. c., p. 1439 (1858).

*Lebeda hebes* Wk., l. c., p. 1462 (1858).

*Odonestis abstersa* Wk., l. c., XXXII, p. 553 (1865).

*Odonestis sodalis* Wk., l. c., XXXII, p. 553 (1865).

*Lasiocampa consimilis* Wk., l. c., XXXII, p. 562 (1865).

*Lasiocampa innotata* Wk., l. c., IV, p. 1443 (1855).

*Lasiocampa inconclusa* Wk., l. c., XXXII, p. 569 (1865).

*Dendrolimus punctata* GRÜNB., Seitz. Macrolep. ii. p. 173, Pl. 28, f. d (1911).

*Dendrolimus punctatus* MATS., 6000 Ins. Jap., p. 682, f. 354 (1931).

Hab.—China, Japan.

Nom. Jap.—*Taiwan-matsukareha*.

a. f. *baibarana* MATS., Jour. Coll. Agr. Hokkaido Imp. Univ., XVIII, p. 21, Pl. III, f. 13, ♂ (1926).

Hab.—Formosa.

b. f. *kantozana* MATS., l. c., f. 12, ♂ (1926).

Hab.—Formosa.

c. f. *pallidiola* MATS., l. c., f. 14, ♂ (1926).

Hab.—Formosa.

#### 4. *spectabilis* BUTL.

*Odonestis spectabilis* BUTL., Ann. Mag. N. H. (4) XX, p. 482 (1877).

*Oeona segregata*, BUTL., l. c., p. 482 (1877).

*Dendrolimus segregatus* GRÜN., Seitz Macrolep., ii, p. 172, Pl. 28, f. b (1911).

*Dendrolimus spectabilis* NAG., Bull. Nawa Ent. Lab. Gifu, ii, p. 16, Pl. 1, f. 11-14, Pl. IV, f. 8-11, 16-18 (1917).

This is most widely distributed pine-caterpillar in Japan, being not injurious to *Abies* and *Picea*-spp.

Hab.—Hokkaido, Honshu, Shikoku, Korea, Manchuria, Amur.

Nom. Jap.—*Matsu-kareha*.

This is allied to *punctatus* WK., but much larger, the larva lacking hair-pen-like clusters.

This is also quite variable and the following forms are well discriminated.

a. f. *albomarginata* MATS., Thous. Ins. Jap. Add. IV, p. 924, Pl. 70, f. 5 (1921).

Hab.—Hokkaido.

b. f. *bifascia* GRÜN.

*Dendrolimus segregatus* ab. *bifascia* GRÜN., Seitz. Macrolep. ii, p. 172, Pl. 28, f. c, ♂, ♀ (1911)

Hab.—Honshu.

c. f. *cinerea* GRÜN.

*Dendrolimus segregatus* ab. *cinerea* GRÜN., l. c., f. d, ♂ (1911).

Hab.—Honshu?, China (Tsingtau).

d. f. *coreana* MATS., Journ. Coll. Agr. Hokk. Imp. Univ., XVIII, p. 19, Pl. iii, f. 5, ♂ (1926).

Hab.—Korea.

e. f. *fallax* MATS., l. c., p. 19, Pl. III, f. 4, ♂ (1926).

Hab.—Korea.

f. f. *terruginea* MATS., l. c., p. 19 (1926).

Hab.—Hokkaido.

g. f. *fuscofascia* MATS., Thous. Ins. Jap. Add. IV, p. 921, Pl. 69, f. 6, ♂ (1921).



Hab.—Honshu.

h. f. *griseomarginalis* MATS., Jour. Coll. Agr. Hokk. Imp. Univ., XVIII, p.17 (1926).

Hab.—Hokkaido.

i. f. *hiroshimana* MATS., l. c., p. 19 (1926).

Hab.—Honshu.

j. f. *hyacinthia* MATS., Thous. Ins. Jap. Add. IV, p. 923, Pl. 69, f. 7, ♂ (1921).

Hab.—Hokkaido.

k. f. *kononis* MATS., Jour. Coll. Agr. Hokk. Imp. Univ., XVIII, p. 18, f. 3, ♂ (1926).

Hab.—Honshu.

l. f. *laterita* MATS., Thous. Ins. Jap. Add. IV, XVIII, p. 922, Pl. 69, f. 6, ♂ (1921).

Hab.—Honshu.

m. f. *latifascia* MATS., l. c., p. 923, f. 7, ♂ (1921).

Hab.—Hokkaido.

n. f. *nigrolineata* MATS., l. c., p. 922, Pl. 70, f. 3 (1921).

Hab.—Honshu.

o. f. *ochroleuca* NAG., Bull. Nawa Ent. Lab. Gifu, ii, p. 21, Pl. ii, f. 5, ♂ (1917).

As the figure pictured by the late K. NAGANO has a long abdomen, so the author at first thought that this insect may belong to *Kunugia* NAG., but the abdomen of this typical specimen, which was sent to me by the late T. TAKAMUKU is not long and it has the character of *Dendrolimus* GERM.

Hab.—Honshu.

p. f. *ryuzana* MATS., Jour. Coll. Agr. Hokk. Imp. Univ., XVIII, p. 18, Pl. III, f. 10, ♀ (1926).

Hab.—Korea.

q. f. *segregata* BUTL., Ann. Mag. Nat. Hist. (4), XX, p. 482 (1877).

Hab.—Honshu, Shikoku, Kiushu.

r. f. *shakojiana* MATS., Jour. Coll. Agr. Hokk. Imp. Univ., XVIII, p. 18, Pl. III, f. 9, ♂ (1926).

Hab.—Korea.

s. f. *tenuifascia* MATS., Thous. Ins. Jap. Add. IV, p. 922, Pl. 69, f. 8 (1921).

Hab.—Honshu.

t. f. *tokyonis* MATS., Jour. Coll. Agr. Hokk. Imp. Univ., XVIII, p. 17, Pl. III, f. 1, ♂ (1926).

Hab.—Honshu.

u. f. *tricolor* MATS., l. c., p. 19, Pl. III, f. 6, ♂ (1926).

Hab.—Korea.

### 5. *superans* BUTL.

*Odonestis superans* BUTL., Ann. Mag. Nat. Hist. (4), p. 481 (1877).

*Dendrolimus superans* YANO, Zool. Mag. Tokyo, p. 413 (1915); MATS., 6000 Ins. Jap., p. 683, f. 356 (1931).

This species is not found yet in Hokkaido, the larva being injurious to the *Tsuga*-tree.

Hab.—Honshu.

Nom. Jap.—*Tsuga-kareha*.

This is also variable in colour and pattern, and the following forms are known from Japan:

a. f. *concolorata* MATS., Thous. Ins. Jap. Add. IV, p. 912, Pl. 66, f. 1 (1921).

Hab.—Honshu.

b. f. *dolosa* BUTL., T. E. S. Lond., p. 16 (1881); MATS., Jour. Coll. Agr. Hokk. Imp. Univ., XVIII, p. 12, Pl. II, f. 6, ♀ (1926).

Hab.—Honshu.

c. f. *fentoni* BUTL., l. c., p. 17 (1881); MATS., l. c., p. 13 (1926).

Hab.—Honshu.

d. f. *scribae* MATS., l. c., p. 13, Pl. III, f. 7, ♂ (1926).

Hab.—Honshu.

e. f. *zonata* BUTL., T. E. S. Lond., p. 17 (1881); MATS., Thous. Ins. Jap. Add. IV, p. 921, Pl. 70, f. 6, ♂ (1921).

Hab.—Honshu.

## 6. Gen. *Epicnaptera* RAMB.

### 1. *ilicifolia* L.

*Bombyx ilicifolia* L., Syst. Nat. (X), p. 497 (1758).

Hab.—Europe.

a. f. **japonica** LEECH

*Epicnaptera ilicifolia* f. *japonica* LEECH, P. Z. S. Lond., p. 628 (1888); MATS., 6000 Ins. Jap., p. 683, f. 357 (1931).

This is not rare in Hokkaido, the larva being injurious to the apple-tree and *Milletia floribunda*.

Hab.—Hokkaido, Honshu, China, Manchuria.

Nom. Jap.—*Hime-kareha*.

7. Gen. **Eriogaster** GERM.1. **brevivenis**\* BUTL.

*Chrostogastria brevivennis* BUTL., Cist. Ent., iii, p. 119 (1885).

*Eriogaster argentomaculata* BART., Ent. Nach., 25, p. 353 (1899); MATS., Thous. Ins. Jap. Add. IV, p. 906, Pl. 65; f. 14, (1921).

*Eriogaster brevivennis* MATS., 6000 Ins. Jap., f. 385 (1931).

This is quite common in Sapporo, being easily caught by the lamp in the mid-summer.

Hab.—Hokkaido, Honshu.

Nom. Jap.—*Ginboshi-kareha*.

\* *Odonestis brevivennis* GRÜNBERG, Seitz Macrolep. ii, p. 170, Pl. 27, f. f (1911) is not this species, being perhaps a species of *Arguda*.

2. **catacoides** STR.

*Eriogaster catacoides* STRAND, Ent. Mitteil., p. 11 (1915); MATS., 6000 Ins. Jap., p. 683, f. 359 (1931).

*Eriogaster formosana* MATS., Thous. Ins. Jap. Add. IV, p. 908, Pl. LXV, f. 15, ♂ (1921).

This is quite common at Horisha in Formosa, being attracted by the lamp.

Hab.—Formosa.

Nom. Jap.—*Taiwan-ginboshikareha*.

3. **daisensis** MATS.

*Eriogaster daisensis* MATS., Journ. Coll. Agr. Hokk. Imp. Univ., XIX, p. 22, Pl. II, f. 17, ♂ (1927); 6000 Ins. Jap., p. 684, f. 360 (1931).

The silvery spot of the primaries compared with *brevivennis* BUTL. smaller, roundish, resembling more *catacoides* STR. from Formosa.

This was collected at Mt. Daisen, Honshu, at the elevation of about 1000 m. and it seems to be rare.

Hab.—Honshu (Daisen).

Nom. Jap.—*Daisen-ginboshikareha*.

4. **kibunensis** MATS.

*Eriogaster kibunensis* MATS., l. c., p. 23, Pl. II, f. 21, ♂ (1927); 6000 Ins. Jap. p. 634, f. 361

(1931).

A single male specimen was collected by Prof. I. SUGITANI at Kibune near Kyoto in July, 1917.

Hab.—Honshu (Kibune).

Nom. Jap.—*Kibune-ginboshikareha*.

### 5. *takamukui* MATS.

*Eriogaster takamukui* MATS., l. c., p. 24, Pl. II, f. 22, ♂ (1927); 6000 Ins. Jap. p. 684, f. 362 (1931).

One male specimen was collected at Yanagawa near Fukuoka in August by the late T. TAKAMUKU.

Hab.—Kiushu (Yanagawa).

Nom. Jap.—*Takamuku-ginboshikareha*.

### 6. *yatsugadakensis* MATS.

*Eriogaster yatsugadakensis* MATS., l. c., p. 23, Pl. II, f. 18, ♂ (1927); 6000 Ins. Jap., p. 684, f. 363 (1931).

Near *E. kibunensis* MATS., but the primaries golden yellow at the base and dorsal margin, the veins being brownish.

One male specimen was collected at Mt. Yatsugadake in the Prov. Shinano.

Hab.—Honshu (Shinano).

Nom. Jap.—*Yatsugadake-ginboshikareha*.

## 8. Gen. *Estigena* MR.

### 1. *pardalis* WK.

*Megasoma pardale* WK., Cat., VI, p. 1453 (1855).

*Estigena nandina* WK., Cat. Lep. E. I. House, ii, p. 426 (1959).

*Gastropacha abstracta* WK., Cat., XXXII, p. 551 (1865).

*Lebeda scriptiplaga* WK., l. c., p. 569 (1865).

*Estigena pardalis* GRÜNBERG, l. c., p. 170, Pl. 27, f. c (1911); MATS., 6000 Ins. Jap., p. 684, f. 364 (1931).

This is quite common in Formosa.

Hab.—Formosa (Horisha).

Nom. Jap.—*Mayeki-kareha*.

## 9. Gen. *Gastropacha* OCHS.

### 1. *coreana* MATS.

*Gastropacha coreana* MATS., Jour. Coll. Agr. Hokk. Imp. Univ., XIX, p. 22, Pl. III, f. 3, ♂ (1927); 6000 Ins. Jap.; p. 685, f. 365 (1931).

This is not common in Korea, being one of the biggest *Gastropacha*-species

in our faunistic region.

Hab.—Korea.

Nom. Jap.—*Chosen-kareha*.

## 2. *horishana* MATS.

*Gastropacha horishana* MATS., Journ. Coll. Agr. Hokk. Imp. Univ., XIX, p. 21, Pl. II, f. 14, ♂ (1927); 6000 Ins. Jap., p. 685, f. 366 (1931).

This was caught at Horisha by Messrs. K. KIKUCHI and R. SAITO, being not common.

Hab.—Formosa.

Nom. Jap.—*Hoso-hoshikareha*.

## 3. *taiwana* WILEM.

*Gastropacha taiwana* WILEM., Ent., p. 16 (1915).

*Gastropacha khasiana* MATS., (nec Swinh.) 6000 Ins. Jap., p. 686, f. 367 (1931).

This resembles much *G. angustipennis* WK., but smaller, paler, at the termen grayish, the brownish spot-series being not conspicuous.

This is not rare at Baibara, being attracted by the lamp.

Hab.—Formosa.

Nom. Jap.—*Hosoba-hoshikareha*.

## 4. *populifolia* ESP.

*Bombyx populifolia* ESP., Schmett., iii, p. 62, Pl. IV, f. 3, 4, Pl. VIII, f. 1 (1782).

*Gastropacha populifolia* GRÜNBERG., Seitz Macrolep. Pal. ii, p. 169, Pl. 27, f. e (1911); MATS., 6000 Ins. Jap. p. 685, f. 368 (1931).

This is not common in Japan.

Hab.—Hokkaido, Honshu, Korea, China, Europe.

Nom. Jap.—*Hoshi-kareha*.

### a. f. *angustipennis* WK.

*Gastropacha angustipennis* WK., Cat., IV, p. 1394 (1855).

Hab.—Formosa, N. India.

### b. f. *japonica* MATS. (n. f.)

*Gastropacha populifolia* f. *japonica* MATS. (nec Leech), 6000 Ins. Jap., p. 685, f. 368, ♀ (1931).

♀. Differs from the typical specimen in having much larger conspicuous series of fuscous spots; the middle fuscous line of the head and thorax broader and much conspicuous.

Hab.—Shikoku (Iyo); 2 (1 ♂, 1 ♀) specimens were collected by Mr. ARAKAWA and sent to me for identification.

## 5. *quercifolia* L.

*Bombyx quercifolia* L., Syst. Nau. (X), p. 497 (1758).

*Gastropacha quercifolia* f. *alnifolia* OCHS., Schm. Eur. ii, p. 239 (1810).

*Gastropacha quercifolia* f. *cardifolia* FELD., Wien. Ent. Mon., VI, p. 35 (1862); GRÜNB., l. c., p. 169, Pl. 27, f. d, e (1911); MATS., 6000 Ins. Jap., p. 686, f. 269 (1931).

This is quite common in Japan, the caterpillar being injurious to the apple-tree.

Hab.—Hokkaido, Honshu, China, Manchuria, Europe.

Nom. Jap.—*Nami-kareha*.

## 6. *tsingtauca* GRÜNB.

*Gastropacha tsingtanica* GRÜNB., Seitz Macrolep. II, p. 169, Pl. 27, f. c, d (1911); MATS., 6000 Ins. Jap., p. 586, f. 379, ♂ (1931).

This may be the same species with *G. angustipennis* WK., but the abdomen of the former is much infuscated.

This is not rare at Sapporo, being caught by the lamp.

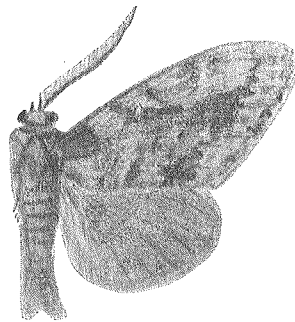
Hab.—Hokkaido, Honshu, China.

Nom. Jap.—*Haraguro-hoshikareha*.

## 9. Gen. *Karenkonina* MATS. (n. g.)

### 1. *taiwana* MATS. (n. sp.)

♂. Reddish brown, antemedial, medial and postmedial lines fuscous brown, antemedial below the medial vein double, geniculated outwardly, in the interspace being paler, in the cell at the outside of the line with a white spot; medial line oblique, scallop-like chained, gently ex-curved, at the outer side paler, especially near the dorsum; postmedial line darker, wavy, becoming broader and conspicuous towards the dorsum, opening at near the apex after gently excurving, at the outside in each interspace tooth-like produced; at the termen a series of fuscous brown spots; fringe paler, chequered with fuscous brown. Primaries purplish brown, in the middle with 2 paler bands which are diverged towards the costa. Underside in both wings with each 2 fuscous bands, those of the secondaries being nearer to each other. Exp.: 50 mm.



*Karenkonina taiwana* MATS.

Hab.—Formosa; one male specimen was collected by Messers: T. OKUNI and J. SONAN.

Nom. Jap.—*Karenko-kareha*.

*Karenkonina* n. g.—Allied to *Dendrolimus* GERM., but differs from the

latter in having the pectination of antennae longer; veins 6, 7 and 9 of the primaries long stalked, costa nearly straight, scarcely curved near the apex; from the base to the middle scattered with long narrow hairs; all tibiae slender, with long but not dense hairs, the mid- and hind-tibiae with no apical spur; abdomen at the apex with a long forked hair-bush.

Genotype—*Karenkonio taiwana* MATS.

## 10. Gen. *Kononia* MATS.

### 1. *pinivora* MATS.

*Kononia pinivora* MATS., Ins. Mats., p. 112, f. 1(1924); 6000 Ins. Jap., p. 686, f. 371 (1931).

This was found up on Mt. Daisetsu in July and August among the forests of *Pinus pumila*.

Hab.—Hokkaido (Mt. Daisetsu).

Nom. Jap.—*Haimatsu-kareha*.

## 11. Gen. *Kunugia* NAG.

### 1. *ampla* WK.

*Odonestis ampla* WK., Cat., p. 1417 (1855).

*Dendrolimus formosanus* MATS., Jour. Coll. Agr. Hokk. Imp. Univ., XIX, p. 17, Pl. iii, f. 1, ♂, 2, ♀ (1927).

*Metanastris formosana* MATS., 6000 Ins. Jap., p. 688-9, f. 377 (1931).

This is variable in colour and pattern, being one of the biggest *Lasiocampid*-moths in the Oriental region.

Hab.—Formosa (Horisha).

Nom. Jap.—*Takasago-kareha*.

#### a. f. *flavopallida* MATS.

*Dendrolimus formosanus* MATS. ab. *flavopallida* MATS., Jour. Coll. Agr. Hokk. Imp. Univ., XIX, p. 17, Pl. III, f. 5, ♂ (1937); 6000 Ins. Jap., p. 689, f. 377, b, ♂ (1931).

Hab.—Formosa.

#### b. f. *fuscobasalis* MATS.

*Dendrolimus formosanus* MATS. ab. *fuscobasalis* MATS., l. c., p. 17, Pl. III, f. 4, ♂ (1927); 6000 Ins. Jap., p. 689, f. 377, c, ♀ (1931).

Hab.—Formosa.

#### c. f. *formosana* MATS.

*Dendrolimus formosanus* MATS., l. c., p. 16, Pl. III, f. 1, ♂, 2, ♀ (1927); 6000 Ins. Jap., p. 688, f. 377, a (1931).

Hab.—Formosa.

#### d. f. *kimadara* MATS. (n. f.)

Differs from f. *formosana* MATS. in having the ground colour pale yellow-

ish, at the basal third somewhat brownish, at the costa with a large roundish yellowish patch, along the submarginal line near the apex with 3 yellowish spots.

Hab.—Formosa; one male specimen was collected by the late T. TAKAMUKU.

e. f. *kusari* MATS. (n. f.)

Differs from f. *fuscobasalis* MATS. in having much darker colour, the submarginal line of paler spot-series edged on each side by fuscous scallops, the medial line obsolete, the discal white spot being smaller.

Hab.—Formosa; 2 male specimens were collected at Baibara near Horisha by Mr. K. KIKUCHI.

f. f. *metanastroides* STR.

*Dendrolimus metanastroides* STR., Ent. Mitteil., p. 10 (1915).

Hab.—Formosa.

g. f. *usuguronis* MATS. (n. f.)

Much similar to f. *kusari* MATS., but in this form lacking the paler chain-like submarginal line.

Hab.—Formosa; one male specimen was collected by Mr. K. KIKUCHI at Baibara.

2. *arizana* WILEM.

*Metanastria arizana* WILEM., Ent., 43, p. 192 (1911); GRÜNB., l. c., p. 396, (1921); MATS., 6000 Ins. Jap., 688, f. 376 (1931)

This was caught at Mt. Arisan by the late A. E. WILEMAN and it seems to be rare.

Hab.—Formosa (Arisan).

Nom. Jap.—*Arisan-kareha*.

3. *brunnea* WILEM.

*Metanastria brunnea* WILEM., Ent. V, p. 15 (1915); MATS., 6000 Ins. Jap., p. 688, f. 376 (1931).

A few specimens were collected at Horisha by the author.

Hab.—Formosa (Horisha).

Nom. Jap.—*Shirohoshū-obikareha*.

4. *iwasakii* NAG.

*Dendrolimus ? iwasakii* NAG., Bull. Nawa Ent. Lab. Gifu, ii, p. 23, Pl. II, f. 8, ♀ (1907).

The author has not seen the original specimen, but according to the figure given by the late K. NAGANO, it may most probably belong to *Kanugia*.

Hab.—Okinawa (Yonakuni).



Nom. Jap.—*Iwasaki-kareha*.

### 5. *kikuchii* MATS.

*Dendrolimus kikuchii* MATS., Jour. Coll. Agr. Hokk. Imp. Univ., XIX, p. 18, Pl. II, f. 16, ♂ (1927).

*Metanastria kikuchii* MATS., 6000 Ins. Jap., p. 689, f. 378 (1931).

A few specimens were collected by the author.

This may be an aberrant form of *K. arizana* WILEM.

Hab.—Formosa (Horisha).

Nom. Jap.—*Kikuchi-kareha*.

a. f. *saitonis* MATS., l. c., p. 18, Pl. ii, f. 23, ♂ (1927); 6000 Ins. Jap., p. 689, f. 378, b (1931).

Hab.—Formosa (Horisha).

### 6. *undans* WK.

*Lebeda undans* WK., Cat. VI, p. 1458 (1855).

*Bombyx fasciatella* MËN., Bull. Acad. PËters., p. 218 (1858).

*Bombyx flaveola* MOTSH., Bull. Mosc. XXIX, p. 192 (1866).

*Odonestis excellens* BUTL., Ann. Mag. N. H. (4), XX, p. 481 (1877).

*Dendrolimus undans* GRÛNB., l. c., p. 173 (1911).

*Metanastria undans* GRÛNB., l. c., p. 396, Pl. 34, f. d (1921).

*Metanastria undans* f. *excellens* MATS., 6000 Ins. Jap., p. 690, f. 381 (1931).

This caterpillar is very injurious to the leaves of *Quercus*-trees.

Hab.—Hokkaido, Honshu, India.

Nom. Jap.—*Kunugi-kareha*.

a. f. *excellens* BUTL.

*Odonestis excellens* BUTL., Ann. Mag. N. H. (4), XX, p. 481 (1877).

Hab.—Hokkaido, Honshu.

### 7. *yamadai* NAG.

*Kunugia yamadai* NAG., Bull. Nawa Ent. Lab., II, p. 24, Pl. ii, f. 6, 7, Pl. iii, f. 28-9 (1917).

*Metanastria yamadai* MATS., 6000 Ins. Jap., p. 690, f. 282 (1931).

This is not abundant, its caterpillar being injurious to the leaves of *Quercus*-plants.

Hab.—Honshu.

Nom. Jap.—*Yamada-kareha*.

## 22. Gen. *Lebeda* WK.

### 1. *nobilis* WK.

*Lebeda nobilis* WK., Cat. VI, p. 1456 (1855); GRÛNB., l. c., p. 147, Pl. 30, f. c (1911); MATS., 6000 Ins. Jap., p. 687, f. 372 (1931).

This is one of the biggest moth in the Oriental region, its caterpillar being about 5 inches long, subflat, hairy, injurious to the *Acacia*-plants.

Hab.—Formosa, China, India.

Nom. Jap.—*O-kareha*.

### 13. Gen. *Malacosoma* HB.

#### 1. *neustrium* L.

*Bombyx neustria* L., Syst. Nat. (X), p. 500 (1758).

*Clisiocampa testacea* MOTSCH., Etud. Ent., p. 32 (1860).

*Malacosoma neustria* GRÜNBERG, Seitz Macrolep. ii, p. 150, Pl. 24, f. b (1911); MATS., 6000 Ins. Jap., p. 687, f. 374 (1931).

This is very common in Japan, the larva being very injurious to the *Rosa-ceous* plants.

Hab.—Hokkaido, Honshu.

Nom. Jap.—*Obi-kareha*.

a. f. *coreana* MATS. (n. f.)

♂. Nearly the same colour with that of the female, reddish brown, with 2 pale yellowish bands; secondaries with no band.

Hab.—Korea; one male specimen was collected by Dr. H. OKAMOTO at Koryo.

b. f. *formosana* MATS. (n. f.)

♂. Differs from f. *testacea* MOTSCH. in having more paler grayish shade, the ante- and postmedial lines broader, primaries at the underside only in the disc somewhat brownish.

Hab.—Formosa; 2 male specimens were collected by Messrs. T. UCHIDA and H. KÔNO at Tompo in Niitaka and another male by the late T. TAKAMUKU at Horisha.

c. f. *interrupta* MATS.

*Malacosoma interrupta* MATS., Thous. Ins. Jap. Add. IV, p. 901, Pl. 65, f. 11, ♂ (1921); 6000 Ins. Jap., p. 686, f. 373 (1931).

Hab.—Hokkaido, Honshu (Shinano).

d. f. *takamukui* MATS. (n. f.)

♀. Differs from the typical form in having the basal and terminal parts of the primaries broadly, and at the outer third of the secondaries pale yellow.

Hab.—Kiusiu; one female was collected by the late T. TAKAMUKU at Yanagawa.

14. Gen. *Metanastria*\* GERM.1. *hyrtaca* CRAM.

*Bombyx hyrtaca* CRAM., Pap. Exot.iii, p. 249 (1780).

*Paragama hyrtaca* GRÜNBE., Seitz Macrolep. ii, p. 176, Pl. 29, f. a (1911).

*Metanastria hyrtaca* GRÜNBE., l. c., Indo-Austr. ii, p. 396, Pl. 34, f. e (1921); MATS., 6000 Ins. Jap., p. 693, f. 391 (1931).

This is quite common in Formosa, the male and female differ much in colour and pattern, the latter being rare.

Hab.—Formosa, China, India.

Nom. Jap.—*Monkuro-kareha*.

\* Since under the genus *Metanastria* GERM. many species of Lasiocampid-moths were described, but the author found comparing with the genotype—*hyrtaca* CRAM.—most of them must be treated under an other different genus. After studying the literature the author convinced that most of them may be appropriate to treat under the genus *Kunugia* NAG. (Bull. Nawa Ent. Lab. Gifu, ii, p. 24, 1917). Many other species described under *Metanastria* GERM. most probably may belong to *Kunugia* NAG.

15. Gen. *Odonestis* GERM.\*1. *pruni* L.

*Bombyx pruni* L., Syst. Nat. (X), p. 498 (1758).

*Lasiocampa pruni* LEECH, P. Z. S. Lond., p. 627 (1888).

*Odonestis pruni* LEECH, T. E. S. Lond., p. 115 (1899); MATS., 6000 Ins. Jap., p. 691, f. 383 (1931).

This is quite common at Sapporo, being attracted by the lamp, especially in July. The female is rare.

Hab.—Hokkaido, Honshu, Manchuria, Europe.

Nom. Jap.—*Ringo-kareha*.

\* *Odonestis brevivenis* GRÜNBE., (Seitz Macrolep. Pal. ii, p. 170, Pl. 27, f. 1911) is perhaps a species belonging to Gen. *Arguda* MOOR.

16. Gen. *Pachyparoides* MATS.1. *albisparsa* WILEM.

*Metanastria albisparsa* WILEM., Ent., p. 137 (1910); GRÜNBE., Seitz. l. c., p. 396 (1921).

*Pachyparoides albinotum* MATS., Journ. Coll. Agr. Hokk. Imp. Univ., XIX, p. 19, Pl. V, f. 43 (1927).

*Pachyparoides albisparsa* MATS., 6000 Ins. Jap., p. 691, f. 384 (1931).

This is quite rare in Formosa, being found in the mountainous regions of Horisha and Rantaizan.

Hab.—Formosa.

Nom. Jap.—*Sejiro-kareha*.

17. Gen. *Paralebeda* AURIV.

1. *plagifera* WK.

*Lebeda plagifera* WK., Cat. VI, p. 1459 (1855).

*Opsirhina crinoides* FELD., Reise d. Novara, Lep. IV, Pl. 84, f. 3 (1874).

*Paralebeda plagifera* GRÜNB., l. c., p. 175, f. 30, f. d (1911); MATS., 6000 Ins. Jap., p. 691, f. 385, ♂ (1931).

This is quite common at Horisha, being caught by the lamp.

Hab.—Formosa, China, Philippines, India.

Nom. Jap.—*Nakamon-kareha*.

18. Gen. *Pseudarguda* MATS. (n. g.)

1. *formosae* WILEM.

*Arguda formosae* WILEM., Ent., p. 136 (1910); MATS., 6000 Ins. Jap., p. 679, f. 341 (1931).

The male is not few in Horisha, but the female rare.

Hab.—Formosa (Horisha, Kanshirei).

Nom. Jap.—*Taiwan-kareha*.

*Pseudarguda* MATS. (n. g.)

Closely allied to *Arguda* MOOR., but differs from the latter as follows:

Antennae with the branches at the base shorter, towards the middle much longer, and then becoming much shorter, gradually decreasing towards the apex; palpi at the base slender, at the apex enlarged, being oval in shape; primaries with veins 6 and 7 stalked, the stalk being shorter than the discocellulars, the outer margin nearly straight, much more oblique, so that the tornus obtuse; secondaries with veins 4 and 5 stalked, the stalk also shorter than the discocellulars, the costal margin scarcely concave in the middle, at the outer margin rounded, not truncated at the apex; legs bushy pubescent, especially on the hind legs, the mid- and hind-tibiae on each apex with a pair of spurs, concealed in the hairs.

Genotype—*Arguda formosae* WILEM.

19. Gen. *Selenephera* RAMB.

1. *lunigera* ESP.

*Bombyx lunigera* ESP., Schmet., iii, p. 114, Pl. 22, f. 5 (1784).

*Selenephera takamukuana* MATS., Thous. Ins. Jap. Add. IV, p. 904 (1921).

*Selenephera lunigera* f. *takamukuana* MATS., 6000 Ins. Jap., p. 692, f. 386 (1931).

The typical species inhabits in Europe, but the local forms come from Saghalien and Honshu (Nikko), but both being rare.

Nom. Jap.—*Takamuku-kareha*.

a. f. ***takamukuana*** MATS.

*Selenophera takamukuana* MATS., Thous. Ins. Jap. Add. IV, p. 904 (1921).

Hab.—Honshu (Nikko).

b. f. ***sachalinensis*** MATS. (n. f.)

In 1925, when the author enumerated the butterflies and moths from Saghalien (Jour. Coll. Agr. Hokk. Imp. Univ., Vol. XV, Pt. 3), he has identified this form as *takamukuana* MATS., but it differs from it in having much broader ante- and postmedial whity lines.

This is not rare in Saghalien.

Hab.—Saghalien.

## 20. Gen. ***Syrastrena*** MOOR.

### 1. ***minor*** MOOR.

*Syrastrena minor* MOOR., Lep., Atk., p. 78 (1879); MATS., 6000 Ins. Jap., p. 632, f. 337 (1931).

4 male specimens were collected at Horisha by the late T. TAKAMUKU; it seems to be rare.

Hab.—Formosa, India.

Nom. Jap.—*Futasuji-togari-kareha*.

## 21. Gen. ***Syrastenoides*** MATS.

### 1. ***horishana*** MATS.

*Syrastenoides horishana* MATS., Jour. Coll. Agr. Hokk. Imp. Univ., XIX, p. 19, Pl. II, f. 20, 3 (1927); 6000 Ins. Jap., p. 632, f. 388 (1931).

A quite many specimens were collected by the late T. TAKAMUKU.

Hab.—Formosa (Horisha).

Nom. Jap.—*Horisha-kareha*.

## 22. Gen. ***Takanea*** NAG. (*Seitzia* SCRIBA).

### 1. ***miyakei*** WILEM.

*Crinocraspeda? miyakei* WILEM., Ent., p. 192 (1911).

*Takanea miyakei* NAG., Ball. Nawa Ent. Lab. Gifu, ii, p. 12, Pl. 1, f. 3, Pl. IV, f. 22-26 (1917); MATS., 6000 Ins. Jap., p. 692, f. 390 (1931).

*Seitzia plumigera* SCRIBA, Ent. Rund., 36, p. 42, f. 3 (1919).

*Takanea japonensis* MARUMO, Jour. Coll. Agr. Tokyo, p. 263, Pl. 20, f. 4 (1920).

This is quite common in the mountainous regions of Saghalien, Hokkaido

and Honshu.

It is quite variable in colour and pattern, the figure of Dr. MARUMO may have been pictured by a poor specimen. About 50 specimens lying before me have mostly different pattern and coloration.

Hab.—Saghalien, Hokkaido, Honshu.

Nom. Jap.—*Miyake-kareha*.

## 2. *excisa* WILEM.

*Criocraspeda excisa* WILEM., Ent., p. 192 (1910).

*Takanea excisa* MATS., 6000 Ins. Jap., p. 692, f. 389 (1931).

This was caught at Mt. Arisan by the late A. E. WILEMEN in July, but the author has not received yet this specimen from Formosa.

Hab.—Formosa (Arisan).

Nom. Jap.—*Arisan-kareha*.

## 23. Gen. *Trabala* WK.

### 1. *vishnou* LEF.

*Gastropacha vishnou* LEF., Zool. Journ. III, p. 203 (1827).

*Amydona prasina* WK., Cat. VI, p. 1417 (1855).

*Amydona pallida* WK., l. c., (1855).

*Amydona basalis* WK., l. c., p. 1415 (1855).

*Gastropacha sulphurea* KOLL., Hügel's Kaschmir. IV, (2), p. 203 (1844).

*Trabala mahanada* MR., P. Z. S. Lond., p. 821 (1865).

*Crinocraspeda guttata* MATS., Thous. Ins. Jap. Suppl., I, p. 85, Pl. XIII, f. 1 (1909).

*Trabala vishnou* GRÜNB., Seitz Macrolep. ii, p. 166, Pl. 27; f. a (1911); MATS., 6000 Ins. Jap., p. 692, f. 392 ♀ (1931).

This is quite common in Formosa, being collected by the lamp.

Hab.—Formosa, China, India.

Nom. Jap.—*Kiuro-kareha*.

## 24. Gen. *Trichiura* STEPH.

### 1. *tamanukii* MATS.

*Trichiura tamanukii* MATS., Ins. Mats., ii, p. 120, f. 2, ♂ (1927); 6000 Ins. Jap., p. 693, f. 393 (1931).

Six male specimens were collected by Mr. K. TAMANUKI at Konuma, Saghalien, and sent to me for identification. This resembles somewhat *T. crataegi* L. from Europe.

Hab.—Saghalien (Konuma).

Nom. Jap.—*Tamanuki-kareha*.

25. Gen. *Wilemaniella* MATS.1. *discitincta* WILEM.

*Cosmotriche discitincta* WILEM., Ent., p. 321 (1914).

*Wilemaniella discitincta* MATS., 6300 Ins. Jap., p. 694, f. 394, ♂ (1931).

This is quite common in May, especially in the mountainous region of Formosa.

Hab.—Formosa.

Nom. Jap.—*Nakaguro-karena*.

---



---

## BEITRAG ZUR LYCIDEN-FAUNA JAPANS

VON

HIROMICHI KÔNO

(Mit 2 Figuren)

In der vorliegenden Arbeit habe ich neue Fundorte von einigen Lyciden-Arten und die Beschreibung der 1 Gattung, 1 Untergattung, 3 Arten und 1 Unterart gegeben.

Das Material, welches bei dieser Arbeit mir vorlag, stammt ganz aus der im Entomologischen Museum der Kaiserlichen Hokkaido Universität zu Sapporo deponierten Kollektion.

In dieser Stelle möchte ich Herrn Prof. Dr. S. MATSUMURA, welcher mich freundlichst angeleitet hat, meinen innigsten Dank ausdrücken.

***Macrolycus dominator* KLEINE**

Deutsch. Ent. Zeitschr., p. 325 (1925).

Bisher ist die Art nur aus Formosa bekannt. Bei mir aber auch liegt ein Weibchen aus Okinawa vor.

Fundorte:—Okinawa (1 ♀, S. SAKAGUCHI); Formosa (Tappan, Kagi, Iba-ho, Berg Arisan).

---

Ins. Mats., Vol. VII, No. 1 & 2, December, 1932.