



Title	A List of Cymatophoridae in Japan, Korea and Formosa with a generic Key
Author(s)	Matsumura, S.
Citation	Insecta matsumurana, 8(2), 89-103
Issue Date	1933-10
Doc URL	http://hdl.handle.net/2115/9265
Type	bulletin (article)
File Information	8(2)_p89-103.pdf



[Instructions for use](#)

A LIST OF *CYMATOPHORIDAE* IN JAPAN, KOREA AND FORMOSA WITH A GENERIC KEY

By

Prof. S. MATSUMURA

(With 2 Textfigures)

Relatively a few *Cymatophorids*-species are known from the world, and from our faunistic region the following 57 species under 28 genera are recorded. In 1930, GAEDE described the Indo-Australian *Cymatophorids*-species in SEITZ's "The Macrolepidoptera of the World", but without any note he singularly omitted the investigation of HOULBERT¹⁾, which includes quite a many Indian and Formosan genera. Both the genera, *Trispila* HOULB. and *Gaurenopsis* HOULB., are *Noctuids* and here omitted.

In my 1000 Insects of Japan, Add. IV, 1921, I described two *Cymatophorids*-species—*Cymatophora medialis* MATS. and *C. fujisana* MATS.—the former²⁾ is a *Geometrid* and the latter³⁾ a *Noctuid*.

Key to Genera

- a Primaries with no tornal tuft
 - a¹ Primaries narrow, linear
 - b² Primaries with an areola
 - a³ Primaries with veins 6 & 7 branched
 - a⁴ Primaries with raised scaly patches *Epipsestis* MATS.
 - b⁴ Primaries with no raised scaly patches
 - a⁵ Primaries scarcely broader at tornus *Kurama* MATS.
 - b⁵ Primaries distinctly broader at tornus
 - a⁶ Eyes pubescent
 - a⁷ Abdomen with a dorsal tuft *Neoploca* MATS.
 - b⁷ Abdomen with no dorsal tuft
 - a⁸ Secondaries with veins 7 & 8 anastomosed ... *Demopsestis* MATS.

1) Revision Monographique de la famille de Cymatophoridae (Etud. Lép. Comp. Renn., 18, pp. 23-252, Pl. 438-39 (1921)).

2) *Togarioides medialis* MATS.

3) *Kerla macroptera* OBERTH.

- b⁸ Secondaries with veins 7 & 8 separated at bases
..... *Sugitaniella* MATS.
- b⁶ Eyes not pubescent *Saronaga* MOOR.
- b³ Primaries with veins 6 & 7 separated at bases or from a point
 - a⁴ Abdomen with a dorsal tuft *Neopsestis* MATS.
 - b⁴ Abdomen with no dorsal tuft
 - a⁵ Primaries with veins 6 & 7 distinctly separated at bases
..... *Horipsestis* MATS.
 - b⁵ Primaries with veins 6 & 7 from a point *Sugiplota* MATS.
- b² Primaries with no areola
 - a³ Primaries with veins 6 & 7 from a point *Daruma* MATS.
 - b³ Primaries with veins 6 & 7 long stalked
 - a⁴ Primaries with tornus broadly rounded *Neodaruma* MATS.
 - b⁴ Primaries with tornus right angularly rounded ... *Takepsestis* MATS.
- b¹ Primaries broad, triangular
 - a² Primaries with no areola
 - a³ Primaries with veins 6 & 7 much separated at bases
..... *Psidopala* MATS.
 - b³ Primaries with veins 6 & 7 branched *Togaria* MATS.
 - b² Primaries with an areola
 - a³ Abdomen with dorsal tufts
 - a⁴ Abdomen with more than 2 dorsal tufts
 - a⁵ Abdomen with 3 dorsal tufts *Mimopsestis* MATS.
 - b⁵ Abdomen with 2 dorsal tufts *Betapsestis* MATS.
 - b⁴ Abdomen with 1 dorsal tuft
 - a⁵ Primaries with veins 6 & 7 branched *Baipsestis* MATS.
 - b⁵ Primaries with veins 6 & 7 separated at bases or from a point
 - a⁶ Primaries with veins 6 & 7 separated at bases ... *Parapsestis* MATS.
 - b⁶ Primaries with veins 6 & 7 from a point *Thyatira* HB.
 - b³ Abdomen with no dorsal tuft
 - a⁴ Primaries with veins 6 & 7 branched
 - a⁵ Primaries at the apex not acutely pointed *Palimpsestis* HB.
 - b⁵ Primaries at the apex acutely pointed *Lithocharis* WARR.
 - b⁴ Primaries with veins 6 & 7 separated at bases or from a point
 - a⁵ Primaries with veins 6 & 7 separated at bases ... *Exothyatira* MATS.
 - b⁵ Primaries with veins 6 & 7 from a point *Mesopsestis* MATS.
- b Primaries with an areola
 - a¹ Primaries with a tornal tuft
 - a² Primaries with veins 6 & 7 branched

- a³ Primaries at the base with a silvery patch *Hannya* MATS.
 b³ Primaries at the base with no silvery patch *Habrosyne* HB.
 b² Primaries with veins 6 & 7 separated at bases or from a point
 a³ Primaries with veins 6 & 7 separated at bases ... *Cymatochrois* HOULB.
 b³ Primaries with veins 6 & 7 from a point *Miothyatira* MATS.
 b¹ Primaries with no areola *Horithyatira* MATS.

Baipsestis MATS. (Type—*baibarana* MATS.)

(Ins. Mats., VII, p. 190, 1933)

1. *baibarana* MATS.

Parapsestis baibarana MATS., 6000 Ins. Jap., p. 675, f. 336 (1931).

Baipsestis baibarana MATS., Ins. Mats., VII, p. 190 (1933).

Hab.—Formosa.

T. N.—*Baibara-togariba*.

2. *latipennis* MATS.

Cymatophora latipennis MATS., 1000 Ins. Jap. Suppl. 1, p. 76, Pl. XI, f. 12, ♀ (1909).

Palimpsestis latipennis MATS., 6000 Ins. Jap., p. 673, f. 320 (1931).

Hab.—Honshu.

T. N.—*Hiro-togariba*.

3. *suzukii* MATS.

Palimpsestis suzukii MATS., 1000 Ins. Jap. Add. IV, p. 843, Pl. LXI, f. 17, ♂ (1921); 6000 Ins. Jap., p. 674, f. 322 (1931).

Baipsestis suzukii MATS., Ins. Mats., VII, p. 191, pl. IV, f. 16, 22 (1933).

Hab.—Kuriles, Hokkaido, Honshu.

T. N.—*Suzuki-togariba*.

4. *tomponis* MATS.

Baipsestis tomponis MATS., Ins. Mats., VII, p. 191, t. 4, f. 4 (1933).

Hab.—Formosa.

T. N.—*Tompo-togariba*.

Betapsestis MATS. (Type—*takeuchii* MATS.)

(1000 Ins. Jap. Add. IV, p. 851, 1921)

5. *takeuchii* MATS.

Betapsestis takeuchii MATS., l. c., Pl. LXI, f. 11, ♂ (1921); 6000 Ins. Jap., p. 668, f. 294 (1931).

Hab.—Honshu.

T. N.—*Takeuchi-togariba*.

Cymatochrois HOULB. (Type—*dieckmanni* GRAES.)

(Oberth. Et., p. 45, 88, 1921)

6. *dieckmanni* GRAES.

Habrosyne dieckmanni GRAES., Berl. Ent. Zeit., p. 148 (1888); WARREN in SEITZ, Gross-Schm., II, p. 323, t. 49, d (1912); SUZUKI, Ent. Mag., 2, p. 74, t. 3, f. 5 (1916); D.T., Cat., p. 5 (1921).

Habrosyne roseola MATS., 1000 Ins. Jap. Suppl. I, p. 79, Pl. XI, f. 16, ♀ (1909).

Cymatochrois dieckmanni HOULB., l. c. (1921).

Hannya dieckmanni MATS., 6000 Ins. Jap., p. 670, f. 330 (1931).

Hab.—Hokkaido, Honshu, Korea, Amur, Ussuri.

T. N.: *Usuben-aya-togariba*.

***Daruma* MATS.** (Type—*jezoensis* MATS.)

(Jour. Coll. Agr. Hokkaido Imp. Univ., XIX, p. 15, 1927)

7. *jezoensis* MATS.

Daruma jezoensis MATS., l. c., Pl. V, f. 38, ♀ (1927); 6000 Ins. Jap., p. 668, f. 295 (1931).

Hab.—Hokkaido.

T. N.—*Daruma-togariba*.

***Demopsestis* MATS.** (Type—*punctigera* BUTL.)

(Jour. Coll. Agr. Hokkaido Imp. Univ., XIX, p. 16, 1927)

8. *punctigera* BUTL.

Asphalia punctigera BUTL., Cist. Ent., 3, p. 131 (1885).

Cymatophora punctigera MATS., Cat. Jap. Ins., I, p. 114 (1905).

Polyphoca punctigera WARREN in SEITZ, Gross-Schm., 2, p. 331, t. 56 d (1912); SUZUKI, Ent. Mag., 2, p. 82, t. 3, f. 19 (1916); D.T., Cat., p. 30 (1921).

Epipsestis punctigera MATS., 1000 Ins. Jap. Add. IV, p. 860, Pl. LXI, f. 7, ♀ (1921).

Demopsestis punctigera MATS., l. c., p. 16 (1927).

Hab.—Honshu.

T. N.—*Hoshiboshi-togariba*.

***Epipsestis* MATS.** (Type—*ornata* LEECH)

(1000 Ins. Jap. Add. IV, p. 858, 1921)

9. *ornata* LEECH

Polyphoca ornata LEECH, Proc. Z. S. Lond., p. 653, Pl. XXXII, f. 10 (1888); D. T., Cat., p. 30 (1921).

Palimpsestis ornata WARREN in SEITZ, Gross-Schm., p. 327, t. 49 g (1912).

Epipsestis ornata unicolor MATS., 1000 Ins. Jap. Add. IV, p. 857, Pl. LXI, f. 20, ♂ (1921); 6000 Ins. Jap., p. 669, f. 298 (1931).

Hab.—Hokkaido, Honshu.

T. N.—*Murasaki-togariba*.

f. *unicolor* LEECH.

Polyphoca ornata var. *unicolor* LEECH, l. c., f. 11 (1888).

Hab.—Honshu.

***Episaronaga* MATS.** (Type—*albicostata* BREM.)

(Ins. Mats., VII, p. 191, 1933)

10. albicostata BREM.

Cymatophora albicostata BREM., Bull. Sc. St. Petersburg, p. 371 (1861); Lep. Ost.-Sib., p. 47, t. 5, f. 6 (1865); MATS., Cat. Jap. Ins., I, p. 114 (1905); WARREN in SEITZ, Gross-Schm., p. 324, t. 55 m (1912).

Saronaga albicostata WARREN, l. c., p. 324, t. 55 m (1912); SUZUKI, Ent. Mag., Kyoto, 2, p. 72 (1916); D.T., Cat. p. 1 (1921).

Saronaga albicostata MATS., 1000 Ins. Jap. Add. IV, p. 841, Pl. LXI, f. 3, ♂ (1921); 6000 Ins. Jap., p. 675, f. 327 (1931).

Episaronaga albicostata MATS., Ins. Mats., VII, p. 191 (1933).

Hab.—Hokkaido, Korea, Manchuria, China.

T. N.—*Maejiro-togariba*.

Exothyatira MATS. (Type—*flavida* BUTL.)

(Ins. Mats., VII, p. 192, 1933)

11. flavida BUTL.

Thyatira flavida BUTL., Cist. Ent., p. 131 (1885); LEECH, Proc. Z. S. Lond., p. 651 (1888); MATS., Cat. Jap. Ins., I, p. 113 (1905); WARREN in SEITZ, Gross-Schm., II, p. 324, t. 56 e (1912); D. T., Cat., p. 9 (1921); MATS., 1000 Ins. Jap. Add. IV, p. 837, Pl. LX, f. 12, ♂ (1921); 6000 Ins. Jap., p. 677, f. 33, ♂ (1931).

Exothyatira flavida MATS., Ins. Mats., VII, p. 192 (1933).

Hab.—Hokkaido, Honshu.

T. N.—*Kimadara-togariba*.

f. **arizana** WILEM.

Thyatira arizana WILEM, Ent. p. 291 (1910).

Thyatira oblonga POUJ. f. *arizana* MATS., 6000 Ins. Jap., p. 677, f. 337 (1913).

Habrosyne HB. (Type—*derasa* L.)

(Verz. bek. Schm., p. 236, 1816-27)

12. derasoides BUTL.

Habrosyne derasoides BUTL., Ann. Mag. N. H., p. 77 (1877); Ill., Lep. Het. B. M., 3, p. 12, t. 44, f. 1 (1879); WARREN in SEITZ, Gross-Schm., II, p. 323, t. 49 d, 55 m (1912); MATS., 6000 Ins. Jap., p. 669, f. 300 (1931); KAWADA, in Hokuryukan's Jap. Ins., p. 1189, f. 2347 (1932).

Habrosyne derasa LEECH, Proc. Z. S. Lond., p. 651 (1888); MATS., Cat. Jap. Ins., p. 113 (1905); id, 1000 Ins. Jap., p. 7, Pl. XL, f. 4, ♀ (1909); SUZUKI, Ent. Mag. Kyoto, 2, p. 73, t. 3, f. 13 (1916).

Hab.—Hokkaido, Honshu.

T. N.—*Aya-togariba*.

13. indica MOOR.

Gnophora indica MOOR., Proc. Z. S. Lond., p. 44 (1867).

Habrosyne indica WARREN in SEITZ, Gross Schm., 2, p. 323, t. 55 n (1912); Mats., 6000 Ins. Jap., p. 669, f. 301 (1931).

Hab.—Formosa, China, India.

T. N.—*Taiwan-ayatogariba*.

14. intermedia BREM.

Habrosyne intermedia BREM., Lep. Ost.-Sib., p. 96 (1865); WARREN in SEITZ, Gross Schm., 2, p. 223 (1912); MATS., 6000 Ins. Jap., p. 669, f. 302 (1931).

Hab.—Saghalien, Amur.

T. N.—*Karafuto-ayatogariba*.

Hannya MATS. (Type—*violacea* FIXS.)

(Jour. Coll. Agr. Hokkaido Imp. Univ., XIX, p. 15, 1927).

15. violacea FIXS.

Thyatira violacea FIXS., Rom. Mém. Lep., 3, p. 352, t. 15, f. 11 (1887); LEECH, Proc. Z. S. Lond., p. 651 (1888); WARREN in SEITZ, Gross-Schm., 2, p. 224, t. 49 e (1912).

Hannya violacea MATS., (misp. *olivacea* FIXS.), l. c., p. 15 (1927); 6000 Ins. Jap., p. 670, f. 304 (1931).

Hab.—Korea, China.

T. N.—*Ao-togariba*.

Horipsestis MATS. (Type—*teikichiana* MATS.)

(Ins. Mats, VII, p. 193, 1933).

16. teikichiana MATS.*

Horipsestis teikichiana MATS., l. c., p. 193, t. 4, f. 13, 31 (1933).

Hab.—Formosa.

T. N.—*Teikichi-togariba*.

Horithyatira MATS. (Type—*decorata* MOOR.)

(Ins. Mats., VII, p. 193, 1933).

17. decorata MOOR.

Thyatira decorata MOOR., Proc. Z. S. Lond., p. 328 (1881); GAEDE in SEITZ, Gross-Schm. Ind.-Austr., X, p. 659, t. 85 a (1930).

Thyatira takamukui MATS., 1000 Ins. Jap. Add. IV, p. 836, t. 60, f. 11, ♂ (1921).

Thyatira decorata takamukui MATS., 6000 Ins. Jap., p. 677, f. 334 (1931).

Horithyatira decorata MATS., l. c., p. 193 (1933).

Hab.—Formosa.

T. N.—*Takamuku-togariba*.

18. kawamurae MATS.

Thyatira kawamurae MATS., 1000 Ins. Jap. Add. IV, p. 835, t. 60, f. 10, ♂ (1921); 6000 Ins. Jap., p. 677, f. 336 (1931).

Hab.—Kiushu.

T. N.—*Kawamura-togariba*.

Kurama MATS. (Type—*mirabilis* BUTL.)

(1000 Ins. Jap. Add. IV, p. 840, 1921).

* This resembles somewhat *Polyphoca aenea* WILEM. and the latter most probably belongs to this genus.

19. mirabilis BUTL.

Xylina mirabilis BUTL., Ann. Mag. N. H., 4, p. 305 (1879).

Cymatophora mirabilis LEECH, Proc. Z. S. Lond., p. 651 (1888); MATS., Cat. Jap. Ins., I, p. 114 (1905).

Saronaga mirabilis WARREN in SEITZ, Gross-Schm., 2, p. 324, t. 55 m (1912); SUZUKI, Ent. Mag. Kyoto, 2, p. 72, t. 3, f. 11 (1916).

Kurama mirabilis MATS., l. c., p. 840, Pl. LXI, f. 1, ♂ (1921); 6000 Ins. Jap., p. 670, f. 305 (1931).

Hab.—Honshu.

T. N.—*Sakahachi-togariba*.

20. pryeri BUTL.

Thyatira pryeri BUTL., T. E. S. Lond., p. 172 (1881); LEECH, Proc. Z. S. Lond., p. 651 (1888); MATS., Cat. Jap. Ins., I, p. 113 (1905); WARREN in SEITZ, Gross-Schm., 2, p. 325, t. 56 f (1912); KAWADA, Hokuryukan's Jap. Ins., p. 1188, f. 2845 (1932).

Kurama pryeri MATS., 6000 Ins. Jap., p. 670, f. 306 (1931).

Hab.—Honshu.

T. N.—*Usubeni-togariba*.

Lithocharis WARR. (Type—*maxima* BUTL.)

(SEITZ, Gross-Schm., 2, p. 321, 1912).

21. maxima LEECH

Cymatophora maxima LEECH, Proc. Z. S. Lond., p. 653, t. 32, f. 9 (1888); MATS., Cat. Jap. Ins., I, p. 114 (1905).

Lithocharis maxima WARREN in SEITZ, Gross-Schm., 2, p. 321, t. 49 h (1912); SUZUKI, Ent. Mag. Kyoto, 2, p. 71, t. 3, f. 9 (1916); MATS., 1000 Ins. Jap. Add. IV, p. 831, t. 60, f. 14 (1921); id., 6000 Ins. Jap., p. 670, f. 307 (1931); KAWADA, in Hokuryukan's Jap. Ins., p. 1194, f. 2357 (1932).

Hab.—Honshu.

T. N.—*O-togariba*.

Mesopsestis MATS. (Type—*undosa* WILEM.)

(1000 Ins. Jap. Add. IV, p. 849, 1921).

22. wilemani n. n.

Cymatophora undosa WILEM., (praeoc. by HÜBNER), T. E. S. Lond., p. 282, t. 30, f. 20 (1911).

Palimpsestis undosa WARREN in SEITZ, Gross-Schm., 2, p. 328, t. 56 a (1912).

Mesopsestis undosa MATS., 1000 Ins. Jap. Add. IV, p. 849, t. 61, f. 10, ♂ (1921); 6000 Ins. Jap., p. 671, f. 308 (1931).

Hab.—Honshu.

T. N.—*Nejiro-togariba*.

Mimopsestis MATS. (Type—*basalis* WILEM.)

(1000 Ins. Jap. Add. IV, p. 835, 1911).

(*Spilobasis* HOULB. Et. Léop. Comp. Renn., p. 151, 1921).

23. *basalis* WILEM.

Palimpsestis basalis WILEM., T. E. S. Lond., p. 282 (1911); WARREN in SEITZ, Gross-Schm., p. 328 (1912); SUZUKI, Ent. Mag. Kyoto, 2, p. 78, t. 14 (1916).

Mimopsesstis basalis MATS., 1000 Ins. Jap. Add. IV, p. 854, t. 61, f. 18, ♂ (1921); 6000 Ins. Jap., p. 671, f. 309 (1931).

Spilobasis basalis HOULB., Et. Lép. Comp. Renn., p. 151 (1921).

Parapsesstis basalis KAWADA, in Hokuryukan's Jap. Ins., p. 1190, f. 2350 (1932).

Hab.—Hokkaido, Honshu, Korea.

T. N.—*Neguro-togariba*.

***Miothyatira* MATS. (Type—*aurorina* BUTL.)**

(Ins. Mats., p. 194, 1933).

24. *aurorina* BUTL.

Gnophora aurorina BUTL., T. E. S. Lond., p. 171 (1881).

Thyatira aurorina LEECH, Proc. Z. S. Lond., p. 651 (1888); MATS., Cat. Jap. Ins., p. 113 (1905); WARREN in SEITZ, Gross-Schm., 2, p. 326, t. 49 e (1912); SUZUKI, Ent. Mag., 2, p. 75, t. 3, f. 3 (1916); MATS., 1000 Ins. Jap. Add. IV, p. 838, t. 60, f. 13, ♀ (1921); 6000 Ins. Jap., p. 676, f. 332 (1931).

Miothyatira aurorina MATS., Ins. Mats., VII, p. 194 (1933).

Hab.—Hokkaido, Honshu.

T. N.—*Hime-usubeni-togariba*.

***Nemacerota* HAMP. (Type—*cinerea* WARR.)**

This genus probably is not represented in Japan and Formosa.

Nemacerota umbrosa WILEM., may be a variety of *Palimpsestis duplaris* HB. (see No. 34, p. 98).

***Neodaruma* MATS. (Type—*tamanukii* MATS.)**

(Ins. Mats., VII, p. 194, 1933).

26. *tamanukii* MATS.

Neodaruma tamanukii MATS., l. c., p. 194, (1933).

Hab.—Saghalien.

T. N.—*Tamanuki-togariba*.

***Neoploca* MATS. (Type—*arctipennis* BUTL.)**

(Jour. Coll. Agr. Hokkaido, XIX, p. 16, 1927).

27. *arctipennis* BUTL.

Xylina arctipennis BUTL., Ann. Mag. N. H., 1, p. 198 (1878); Ill. Typ. Lep. Het., 3, p. 17, t. 45, f. 3 (1879).

Cymatophora arctipennis LEECH, Proc. Z. S. Lond., p. 653 (1888); MATS., Cat. Jap. Ins., I, p. 114 (1905).

Polyploca arctipennis WARREN in SEITZ, Gross-Schm., 2, p. 331, t. 49 i (1912); KAWADA, in Hokuryukan's Jap. Ins., p. 1194, f. 2358 (1932).

Hab.—Honshu.

T. N.—*Mayumi-togariba*.

f. **innotata** WARR.

Polyploca arctipennis ab. *innotata* WARR., l. c. (1912); SUZUKI, Ent. Mag. Kyoto, 2, p. 82 (1916).

Hab.—Honshu.

28. misaona MATS.

Neoploca misaona MATS., Ins. Mats., VII, p. 194, t. 4, f. 3 (1933).

Hab.—Honshu, Kiushu.

T. N.—*Misao-togariba*.

Neopsestis MATS. (Type—*nikkoensis* MATS.)

(Ins. Mats., p. 195, 1933).

29. nikkoensis MATS.

Polyploca nikkoensis MATS., 1000 Ins. Jap. Add. IV, p. 856, t. 61, f. 19, ♂ (1921).

Epipsestis nikkoensis MATS., 6000 Ins. Jap., p. 668, f. 297 (1931).

Neopsestis nikkoensis MATS., Ins. Mats., VII, p. 195, t. 4, f. 27 (1933).

Hab.—Honshu.

T. N.—*Nikko-togariba*.

Neotogaria MATS. (Type—*saitonis* MATS.)

(Ins. Mats., VII, p. 195, 1933).

30. saitonis MATS.

Neotogaria saitonis MATS., 6000 Ins. Jap., p. 672, f. 313 (1931); Ins. Mats., p. 195, t. 4, f. 20 (1933).

Hab.—Formosa.

T. N.—*Saito-togariba*.

Palimpsestis Hb. (Type—*ocularis* L.)

(Verz. bek. Schmett., p. 273, 1816-27).

31. akanensis MATS.

Palimpsestis akanensis MATS., p. 195, t. 4, f. 7 (1933).

Hab.—Hokkaido.

T. N.—*Akan-togariba*.

32. ampliata BUTL.

Cymatophora ampliata BUTL., Ann. Mag. N. H., 1, p. 78 (1878); Ill. Typ. Lep. Het. B. M., 2, p. 21, t. 28, f. 1 (1878); LERCH, Proc. Z. S. Lond., p. 652 (1888); MATS., Cat. Jap. Ins., p. 114 (1905); D. T., Cat., p. 14 (1921).

Palimpsestis ampliata WARREN in SEITZ, Gross-Schm., 2, p. 328, t. 49 g (1912); SUZUKI, Ent. Mag. Kyoto, 2, p. 79, t. 3, f. 8 (1916); MATS., 1000 Ins. Jap. Add. IV, p. 855, t. 61, f. 16, ♂ (1921); 6000 Ins. Jap., p. 672, f. 314 (1931); KAWADA, in Hokuryukan's Jap. Ins., p. 1192, f. 2354 (1932).

Hab.—Hokkaido, Honshu, Korea, Manchuria, China.

T. N.—*Oba-togariba*.

33. *daisetsuzana* MATS.

Palimpsestis daisetsuzana MATS., 6000 Ins. Jap., p. 672, f. 315 (1931); Ins. Mats., VII, p. 196, t. 4, f. 8 (1933).

Hab.—Hokkaido.

T. N.—*Daisetsu-togariba*.

34. *duplaris* L.

Phalaena-Tinea duplaris L., Faun. Suec., p. 352 (1761).

Cynatophora duplaris LERCH, Proc. Z. S. Lond., p. 653 (1888); MATS., Cat. Jap. Ins., I, p. 114 (1905).

Palimpsestis duplaris WARREN in SEITZ, Gross-Schm., 2, p. 3207, t. 49 h (1912); SUZUKI, Ent. Mag. Kyoto, 2, p. 77, pl. III, f. 1, (1916); MATS., 1000 Ins. Jap. Add. IV, p. 853, t. 61, f. 12, ♂ (1921); 6000 Ins. Jap., p. 673, t. 316 (1931); KAWADA in Hokuryukan's Jap. Ins. p. 1193, f. 2356 (1932).

Nematocera umbrosa WILEM., T. E. S. Lond., p. 281 (1911); SUZUKI, Ent. Mag. Kyoto, 2, p. 82 (1916).

Hab.—Saghalien, Hokkaido (?), Honshu, Europe.

T. N.—*Futatenu-togariba*.

35. *fluctuosa* HB.

Noctua fluctuosa HB., Eur. Schm., 1, t. 44, f. 212 (1799-1804).

Palimpsestis fluctuosa SUZUKI, Ent. Mag. Kyoto, 2, p. 77, t. 3 f. 1 (1916); MATS., 1000 Ins. Jap. Add. IV, p. 848, t. 61, f. 9, ♂ (1921); 6000 Ins. Jap., p. 673, f. 317 (1931); KAWADA, in Hokuryukan's Jap. Ins. p. 1193 f. 2356 (1932).

Palimpsestis ishikii MATS., 1000 Ins. Jap. Add. IV, p. 847, t. 61, f. 8, ♂ (1921).

Hab.—Saghalien, Kuriles, Hokkaido, Honshu, Europe.

T. N.—*Itoten-togariba*.

36. *hirayamai* MATS.

Palimpsestis hirayamai MATS., Ins. Mats., VII, p. 196, t. 4, f. 6 (1933).

Hab.—Honshu.

T. N.—*Hirayama-togariba*.

37. *intensa* BUTL.

Cynatophora intensa BUTL., Ann. Mag. N. H., 7, p. 234 (1881).

Cynatophora angustata STGR., Rom. Mém. Lep., 3, p. 231, t. 17, f. 6 (1887).

Cynatophora octogesima BUTL., Ann. Mag. N. H., 1, p. 78 (1878); Ill. Typ. Lep. Het. B. M., 2, (1873).

Palimpsestis intensa WARREN in SEITZ, Gross-Schm., 2, p. 327, t. 49 (1912); SUZUKI, Ent. Mag. Kyoto, 2, 79, t. 3, f. 17 (1916); MATS., 6000 Ins. Jap., p. 673, f. 318 (1931).

Hab.—Hokkaido, Honshu, Kiushu.

T. N.—*Hoso-togariba*.

38. *kurilensis* MATS.

Palimpsestis kurilensis MATS., 6000 Ins. Jap., p. 673, f. 319 (1931); Ins. Mats., VII, p. 197, t. 4, f. 14 (1933).

Hab.—Kuriles.

T. N.—*Chishima-togariba*.

39. *mushana* MATS.

Palimpsestis mushana MATS., 6000 Ins. Jap., p. 674, f. 321 (1931); Ins. Mats., VII, p. 197, t. 4, f. 2 (1933).

Hab.—Formosa.

T. N.—*Musha-togariba*.

40. *ocularis* L.

Phalaena-Noctua ocularis L., Syst. Nat. ed. 12, p. 837 (1767).

Cymatophora octogesima STGR., Cat. Lep. Palaeartct., p. 258 (1901).

Palimpsestis ocularis WARREN in SEITZ, Gross-Schm., 2, p. 327, t. 49 g (1912).

Cymatophora ocularis D. T., Lep. Cat., p. 18 (1921).

Hab.—Europe

f. ***amurensis* B. HAAS (Fig. 1)**

Palimpsestis ocularis var. *amurensis* B. HAAS in SEITZ Gross-Schm., 2, p. 327, t. 56 (1912).

Hab.—Korea, Manchuria, Amur, Siberia.

T. N.—*Chosen-togariba*.

41. *watanabei* MATS.

Palimpsestis watanabei MATS., 6000 Ins. Jap., p. 674, f. 333 (1931); Ins. Mats., VII, p. 197, t. 4, f. 10 (1933).

Hab.—Formosa.

T. N.—*Watanabe-togariba*.



Fig. 1

Palimpsestis ocularis L. var. *amurensis* B. HAAS

***Parapsestis* WARREN (Type—*argenteopicta* OBERTH.)**

(WARREN in SEITZ, Gross-Schm., 2, p. 329, 1912).

42. *albomarginalis* MATS.

Parapsestis albomarginalis MATS., Jour. Coll. Agr. Hokkaido, XIX, p. 14, t. 4, f. 41, ♀ (1927); GAEDE in SEITZ, Gross-Schm., 10, p. 661 (1930); MATS., 6000 Ins. Jap., p. 674, f. 324 (1931).

Hab.—Honshu.

T. N.—*Herijiro-togariba*.

43. *argenteopicta* OBERTH.

Cymatophora argenteopicta OBERTH., Diagn. Lep. Askold, p. 13 (1879).

Parapsestis argenteopicta WARREN in SEITZ, Gross-Schm., 2, p. 329, t. 49 g (1912); SUZUKI, Ent. Mag. Kyoto, 2, p. 80, t. 3, f. 10 (1916); MATS., 6000 Ins. Jap., p. 675, f. 325 (1931); KAWADA in Hokuryukan's Jap. Ins., p. 1191, f. 235 (1932).

Hab.—Hokkaido, Honshu, Korea, Amur, China.

T. N.—*Ginboshi-togariba*.

f. ***plumbea* BUTL.**

Cymatophora plumbea BUTL., Ann. Mag. N. H., 4, p. 357 (1879).

Parapsestis argenteopicta var. *plumbea* WARREN in SEITZ, Gross-Schm., 2, p. 329, t. 56 b (1912).

Hab.—Hokkaido, Honshu.

Polyplocia HB. (Type—*ridens* F.)

(Verz. Schm., p. 273, 1816).

(*Palmelina* HOULB., 1921).**44. ? *aenea*** WILEM.*Polyplocia aenea* WILEM., Ent., 44, p. 150 (1911).

Hab.—Formosa.

The author has a typical specimen of *ridens* F. from Hungary and he doubts whether in Japan and Formosa the typical genus exists or not. Singularly, in 1921, HOULBERT established a new genus taking the same species (*ridens* F.) as a genotype. WILEMAN says that this species resembles somewhat *P. orbicularis* MOOR. from India.

Psidopala HOULB. (Type—*opalescens* ALPH.)

(OBERTH., Et. Lep. p. 46, 1921)

(*Formotogaria* MATS., 1931).**45. *pennata*** WILEM.*Thyatira pennata* WILEM., Entomologist, p. 268 (1914).*Psidopala pennata* HOULB., Oberth. Etud. Lep. Comp. Renn., p. 46, 93 (1921).

Hab.—Formosa.

To the author unknown.

46. *shirakii* MATS.*Formotogaria shirakii* MATS., 6000 Ins. Jap., p. 669, f. 299 (1931); Ins. MATS., VII, p. 192, t. 4, f. 12, 29 (1933).

Hab.—Formosa.

T. N.—*Shiraki-togariba*.***Psidopaloides*** HOULB. (Type—*apicalis* LEECH)

(OBERTH. Et. Lep., pp. 46-7, 1921).

47. *albipuncta* WILEM.*Thyatira albipuncta* WILEM., Ent., 44, p. 30 (1911).*Psidopaloides albipuncta* HOULB., l. c. (1921).

Hab.—Formosa.

This species is unknown to the author.

Saronaga MOOR. (Type—*albicosta* MOOR.)

(Proc. Z. S. Lond., p. 330, 1881).

48. *c-album* MATS.*Saronaga c-album* MATS., 6000 Ins. Jap., p. 676, f. 328 (1931); Ins. MATS., VII, p. 198, t. 4, f. 17 (1933).

Hab.—Formosa.

T. N.—*C-maebeni-togariba*.

49. commifera WARR.

Saronaga commifera WARREN in SEITZ, Gross-Schm., 2, p. 322, t. 55 m (1912); MATS., 6000 Ins. Jap., p. 676, f. 329 (1931).

Hab.—Hokkaido, Honshu, Korea, China, Manchuria.

T. N.—*O-maebeni-togariba*.

50. consimilis WARR.

Saronaga consimilis WARREN in SEITZ, Gross-Schm., 2, p. 321, f. 55 m (1912); SUZUKI, Ent. Mag. Kyoto, 2, p. 72, t. 3, f. 7 (1916); MATS., 6000 Ins. Jap., p. 676, f. 330 (1931).

Chymatophora albicostata LEECH (nec MOOR.), Proc. Z. S. Lond., p. 652 (1888).

Hab.—Honshu.

T. N.—*Maebeni-togariba*.

51. albicosta MOOR.

Thyatira albicosta MOOR., Proc. Z. S. Lond., p. 45 (1867).

Saronaga albicosta MOOR., l. c., p. 330 (1881); GAEDE in SEITZ, Gross-Schm., 10, p. 658, t. 8, 5 a (1930).

Hab.—India.

f. *taiwana* MATS.

Saronaga taiwana MATS., 6000 Ins. Jap., p. 676, f. 331 (1931); Ins. Mats., VII, p. 198, t. 4, f. 18, (1933).

Hab.—Formosa.

T. N.—*Taiwan-maebeni-togariba*.

Sugiploca MATS. (Type—*sugitanii* MATS.)

(Ins. Mats., VII, p. 199, 1933).

52. sugitanii MATS.

Sugiploca sugitanii MATS., l. c. (1933).

Hab.—Honshu.

T. N.—*Sugitani-togariba*.

Sugitaniella n. g.

Allied to *Demopsestis* MATS., but differs especially in having the vein 5 to primaries arising from near the middle of cell, (in *Demopsestis* from near upper angle of cell), 7 and 8 to secondaries separated (strongly anastomosing with each other in *Demopsestis*), the eyes very long pubescent (in *Demopsestis* short pubescent), 4 and 5 to the same wing arising nearly from a point (in *Demopsestis* distinctly separated).

Genotype—*Sugitaniella kuramana* MATS. (n. sp.)

53. *Sugitaniella kuramana* n. sp. (Fig. 2)

Primaries grayish white, at the costa with numerous whity scales; basal line obsolete; antemedial line black, treble, wavy, the outer line being narrower and

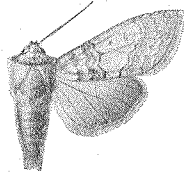


Fig. 2
Sugitaniella kuramana
MATS.

angled outwardly at the medial and anal veins, at the dorsum ending in 3 large spots; orbicular- and reniform- marks black, the former point-like and the latter bar-like; postmedial line double, widely separated, the inner one wavy, the outer one straight, angled outwardly at vein 6; submarginal line white, wavy, enclosing a series of obsolete black specks; terminal line fuscous; fringe grayish, at the middle a darker line. Exp. 38 mm.

Hab.—Honshu; one male specimen was collected by Prof. T. SUGITANI on May 25, 1928, at Kurama by Kyoto.

T. N.—*Kurama-togariba*.

***Suzupsestis* MATS.** (Type—*albida* SUZUKI)

(Ins. Mats., VII, p. 199, 1933).

54. *albida* SUZUKI

Parapsestis albida SUZUKI, Ent. Mag. Kyoto, p. 81, t. 3, f. 16 (1916).

Nemacerota albida MATS., 1000 Ins. Jap., p. 845, t. 61, f. 13, ♂ (1921); 6000 Ins. Jap., p. 671, f. 310 (1931); KAWADA in Hokuryukan's Jap. Ins., p. 1191, f. 2353 (1932).

Suzupsestis albida MATS., Ins. Mats., VII, p. 199 (1933).

Hab.—Honshu.

T. N.—*Usujiro-togariba*.

55. *bilineata* MATS.

Nemacerota bilineata MATS., 1000 Ins. Jap. Add. IV, p. 846, t. 61, f. 7, ♂ (1921); 6000 Ins. Jap., p. 671, f. 311 (1931).

Hab.—Honshu.

T. N.—*Futasuji-togariba*.

***Takapsestis* MATS.** (Type—*wilemaniella* MATS.)

(Ins. Mats., VII, p. 200, 1933)

56. *wilemaniella* MATS.

Polyploca albibasis WILEM., (praeoc. by HAMPSON in 1896) Ent., 44, p. 322 (1910).

Takapsestis wilemaniella MATS., Ins. Mats., VII, p. 199, t. 4, f. 5, 33 (1933).

Hab.—Formosa.

T. N.—*Takamuku-togariba*.

***Thyatira** HB.** (Type—*batis* L.)

(Verz. Schm., p. 236, 1816-27)

* *Trispila* (*Thyatira*) *trimaculata* BREM. from Japan, Korea and Formosa.

Trispila unca HOULB. from China.

Trispila dubernara HOULB. from China.

These are *Noctuid*-species and here omitted.

57. *batis* L.

Phaena-Noctua batis L., Syst. Nat. ed. 10, p. 509 (1758).

Thyatira batis LEECH, Proc. Z. S. Lond., p. 651 (1888); MATS., Cat. Jap. Ins., I, p. 113 (1905); 1000 Ins. Jap. Suppl. I, p. 74, t. 11, f. 8, ♂ (1909); WARREN in SEITZ, Gross-Schm., 2, p. 323, t. 49 e (1912); SUZUKI, Ent. Mag. Kyoto, 2, p. 75, t. 3, f. 4 (1916); MATS., 6000 Ins. Jap., p. 676, f. 333 (1931); KAWADA, in Hokuryukan's Jap. Ins., p. 1188, f. 2346 (1932).

Hab.—Hokkaido, Honshu, Shikoku, Kiushu, Korea, China, Amur, Europe.

T. N.—*Mon-togariba*.

f. *formosicola* MATS.

Thyatira batis f. *formosicola* MATS., Ins. Mats., VII, p. 200 (1933).

Hab.—Formosa.

***Togaria* MATS. (Type—*suzukiana* MATS.)**

(1000 Ins. Jap. Add. IV, p. 843, 1921)

58. *suzukiana* MATS.

Palimpsestis tancrei SUZUKI (nec. Graes.), Ent. Mag. Kyoto, 2, p. 77, t. 3, f. 12 (1916).

Togaria suzukiana MATS., 1000 Ins. Jap. Add. IV, p. 842, t. 61, f. 4, ♂ (1921); 6000 Ins. Jap., p. 678, f. 340 (1931).

Hab.—Honshu.

T. N.—*Nakajiro-togariba*.

59. *takaozana* MATS.

Togaria takaozana MATS., 6000 Ins. Jap., p. 678, f. 339 (1931); Ins. Mats., VII, p. 200, t. 4, f. 9 (1933).

Hab.—Kuriles, Honshu.

T. N.—*Takao-togariba*.