



Title	New Species of Butterflies from Japan
Author(s)	Matsumura, Shonen
Citation	Insecta matsumurana, 8(3), 105-106
Issue Date	1934-03
Doc URL	<a href="http://hdl.handle.net/2115/9266">http://hdl.handle.net/2115/9266</a>
Type	bulletin (article)
File Information	8(3)_p105-106.pdf



[Instructions for use](#)

## NEW SPECIES OF BUTTERFLIES FROM JAPAN

By

Prof. SHONEN MATSUMURA

(With 2 Textfigures)

During the last year the author has received one new species and one new form of Hesperid-butterflies from Formosa and Saghalien and so in this occasion he will describe them.

### *Halpe aokii* n. sp. (Fig. 1)

Closely allied to *H. submacula* LEECH but differs from the latter as follows:

Primaries—Termen shorter, more amply curved; upper side with 2 subequal white spots in the cell, the upper one being placed just over the lower; postmedial series composed of 6 white spots, the lower 3 of which are situated nearly in an oblique straight line and the spot near the middle of dorsum very small, the spot of interspace II being quadrate; fringe pale yellow, at the end of the longitudinal veins fuscous; underside with a submarginal series of golden yellow spots, gradually diminishing their size towards the tornus.

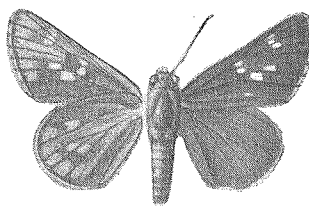


Fig. 1.

*Halpe aokii* MATS. (n. sp.) ♀

Secondaries—Upperside with no spot, fringe yellowish, not checked with black, at the basal  $\frac{1}{3}$  fuscous; underside with no yellowish spot in interspace VI, one spot in V situated in the same level as that of III; yellowish spots of the submarginal series much larger.

Exp. 36 mm.

Hab.—Formosa; one female specimen was collected at Hori by ROKURO AOKI.

The upperside resembles rather more *H. varia* MURR. than that of *submacula* LEECH.

### *Erynnus comma* f. *sachalinensis* n. f. (Fig. 2, a ♀, b ♂)

Differs from the typical specimen in the following points:

---

[Ins. Mats., Vol. VIII, No. 3, March, 1934]

♂. Upperside—Primaries fuscous, reddish yellow at the periphery of the sexual mark; spots in each interspace of III–VIII whitish and larger. Secondaries at the margin broadly fuscous, at the apex of the cell and at the bases

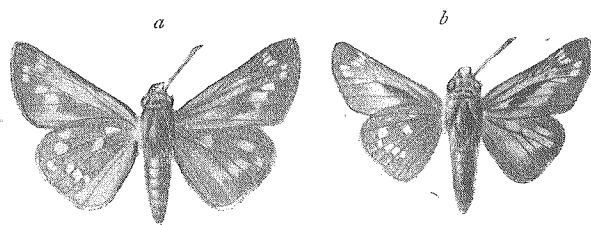


Fig. 2.

a. *Erynnus comma* f. *sachalinensis* MATS. n. f. ♀.  
 b. " " " " ♂.

of interspaces II–IV reddish yellow, a submarginal series of pale yellowish spots being more conspicuous.

Underside — Primaries with the whitish spots in the interspaces more conspicuous, at the terminal  $\frac{1}{3}$  fuscous, at the outer part of

the sexual mark testaceous, at the upper part being yellowish. Secondaries fuscous, all spots larger and the whitish colour being more conspicuous.

♀. Upperside—Primaries with the markings larger, the apical specks white, in the cell reddish yellow except at the base; the pale yellowish spots of the secondaries larger and more conspicuous.

Underside—fuscous, only in the cell of the primaries and at the anal region of the secondaries testaceous yellow; the whitish spots of both wings more conspicuous.

Hab.—Saghalien; 2 (1 ♂, 1 ♀) specimens were collected by T. UCHIDA, I. OKADA and T. SAWAMOTO at Keton on the 18th, July, 1933.

### 摘 要

昨年搦蝶科一新種を一新形を得たれば前出英文にて記載せり。その和名は下の如し。

1. *Halpe aokii* MATS. (n. sp.) アヲキセセリ。
2. *Erynnus comma* f. *sachalinensis* MATS. (n. f.) ケトンセセリ。

尙序に青木六郎氏よりの蝶蛾標本の寄送を感謝す。