



Title	A new Species of Butterfly from Formosa
Author(s)	Matsumura, Shonen
Citation	Insecta matsumurana, 10(1-2), 42-42
Issue Date	1935-11
Doc URL	<a href="http://hdl.handle.net/2115/9309">http://hdl.handle.net/2115/9309</a>
Type	bulletin (article)
File Information	10(1-2)_p42-42.pdf



[Instructions for use](#)

## A NEW SPECIES OF BUTTERFLY FROM FORMOSA

By

Dr. SHONEN MATSUMURA

(With one Textfigure)

As one new species of *Nymphalid*-family from Formosa was collected by Mr. S. HIRAYAMA, so the author on this occasion will describe its diagnosis.

### *Pantoporia hirayamai* n. sp.

♂. Closely resembles the male of *P. selenophora* KOLL., but the white markings of the wings rather as those of the female. It differs from the latter in the following points:

Upperside: Primaries darker, with obscure submarginal series of white spots except one smaller spot in the interspace 6, lacking almost the outer submarginal white band; basal white stripe in the discoidal cell scarcely narrower towards the base; 2nd white band which runs across the basal part of the secondaries and is connected with the submedial series of spots in the primaries much broader. Secondaries with the submarginal series of white band much nearer to the outer margin, so that the interspace between the submedial band and the submarginal obscure white band much narrower.

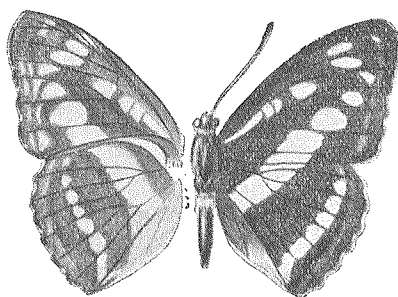
Underside: Markings of the wings nearly as in the upperside; primaries with no dark brown zigzag cross-line in the discoidal cell, and with no dark brown patch in the interspace 4; interspaces 2 and 3 preponderately and one bar-like line which is presented in the interspaces 5 and 6 dark brown; outer submarginal series of white spots fades away from the interspace 5 and

runs to the costal apex becoming obscure towards the anal angle; marginal indentation being shallower; greenish white patch at the innerside of the secondaries extends to one fourth of the white basal band, building here an acute triangle. Exp. 32 mm.

Hab.—Formosa; one male specimen was collected at Sankakuho near Hori by S. HIRAYAMA on the 17th of July, 1934.

Type in the Entomological Institute of the Hokkaido Imperial University, Sapporo.

J. N.: *Hirayama-misuji*.



*Pantoporia hirayamai* n. sp. (♂)