



Title	A new Species of Sapygidae from Korea (Hym.)
Author(s)	Sugihara, Y.; Kim, H.K.
Citation	Insecta matsumurana, 10(3), 123-126
Issue Date	1936-03
Doc URL	<a href="http://hdl.handle.net/2115/9324">http://hdl.handle.net/2115/9324</a>
Type	bulletin (article)
File Information	10(3)_p123-126.pdf



[Instructions for use](#)

A NEW SPECIES OF *SAPYGIDAE*  
FROM KOREA (HYM.)

By

Y. SUGIHARA et H. K. KIM

(With two textfigures)

So far as the writers are concerned no species falling in the family *Sapygidae* has hitherto been recognized in the Japanese Empire. In the following pages one new species ought to be added to the Sapygid-fauna of our country. It is said that some of the species attack the nests of bees-*Xylocopa*, *Osmia*, etc.

On this occasion the writers wish to express their sincere thanks to Ass. Prof. Dr. T. UCHIDA and Mr. C. WATANABE for their kind direction.

Family *SAPYGIDAE*

Genus *Polochrum* SPINOLA

*Polochrum* SPINOLA, Insect. Ligur., I, p. 20 (1806); LATREILLE, Gen. Crust. et Insect., IV, p. 108 (1809); SMITH, Hym. Cat. British Mus., III, p. 116 (1855); COSTA, Fauna Napoli Sapygid., p. 5 (1872); SCHMIEDEKNECHT, Hym. Mitteleuropas, p. 328 (1907), p. 509 (1930).

The genus *Polochrum* was erected by SPINOLA (1806) for reception of *P. repandum*, and LATREILLE (1809), COSTA (1872) and SCHMIEDEKNECHT (1907 and 1930) followed him, on the other hand GERSTAECKER (1861)\*, MORAWITZ (1893)\*\* and DALLA TORRE (1897)\*\*\* included it in the genus *Sapyga*. Examining the specimens of *Sapyga quinquepunctata* (FABRICIUS), *Sapyga clavicornis* (LINNÉ) and *Sapygina decemguttata* (JURINE), sent by Dr. T. KUPKA, the writers are much inclined to the opinion that *Polochrum* should be treated as a distinct genus from *Sapyga*. Only two species have been recognized in the Palaeartic region, one being described here for the first time.

Genotype: *Polochrum repandum* SPINOLA.

---

\* Stettin. entom. Zeitg., XXII, p. 316 (1861).

\*\* Horae soc. entom. Ross., XXVII, p. 396 (1893).

\*\*\* Cat. Hym., VIII, p. 189 (1897).

*Polochrum koreanum* SUGIHARA et KIM sp. nov.

♀. Head transverse, broader than the thorax, very strongly punctate, covered with greyish white hairs. Front prominent, with a median longitudinal furrow, the anterior margin slightly raised and produced at the center where is angularly emarginate; clypeus flat, rounded at anterior margin, with a median longitudinal ridge; mandibles strong, covered with bristle, with three teeth, the apical one being very sharp; occiput tiny arched. Antennae slightly rugose, covered with greyish white hairs, 12 jointed; scapus and 1st joint of the flagellum strongly scooped at the inner side; scapus strongly sinuated, with reddish brown bristle, the inner surface

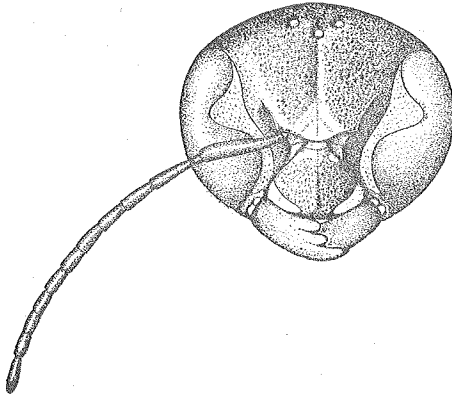


Fig. 1

Head of *Polochrum koreanum* sp. nov.  
(♀) × 12

smooth and shining. The measurement of the antennae as follows:

Segments of antennae	1	2	3	4	5	6	7	8	9	10	11	12
Relative length (mm.)	0.83	0.19	0.45	0.43	0.37	0.31	0.28	0.28	0.30	0.30	0.30	0.37

Pronotum transverse, punctate as in the head, truncated at the anterior margin, incurved at the hind margin, with a furrow in the middle; mesothorax punctate, the punctures weaker than those of the pronotum; mesonotum convex with five longitudinal furrows; propodeum sloped, punctate; claws with one tooth. Pronotum with black long hairs at the fore margin; propodeum with blackish brown long hairs on the lateral sides, the rest covered with greyish white short hairs. Wings subhyaline, the apical margin and radial cell of the fore wings darker; veins and stigma black. Abdomen spindle-shaped, strongly concave ventrally, hind margin of the 2nd tergite being broadest; all the segments finely punctate, scattered long hairs; 1st tergite suddenly narrowed towards the base, strongly outcurved at the hind margin, with a median longitudinal furrow, extending from the base to the apical third; 2nd to 5th tergites medially sinuated at the hind margin.

Black; inner orbits, a triangular spot on the front, four spots on the clypeus, two small spots on the vertex, pronotum on each side of the anterior margin,

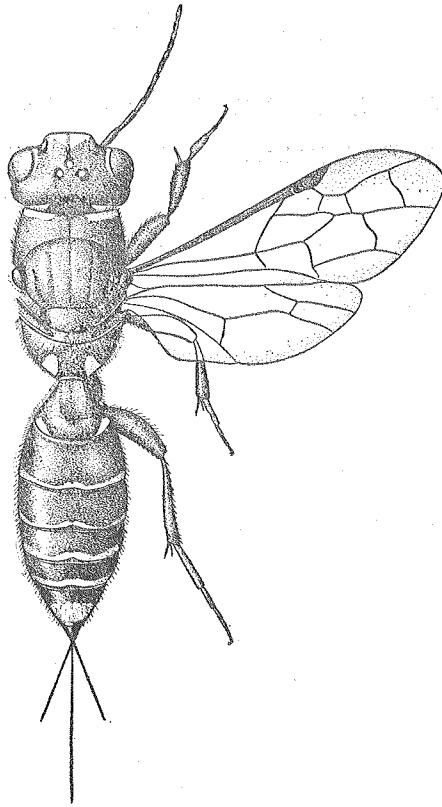


Fig. 2

*Polochrum koreanum* sp. nov. (♀) × 5.5

a small spot of the mesopleurae, two large triangular spots on the propodeum, 1st tergite on each side of the hind margin, 2nd to 5th segments at the hind margin, and the 6th tergite at the apex, bright yellow. Tibial spurs and ovipositor reddish brown.

Length: body 12 mm., ovipositor 3 mm., fore wing 15 mm.

♂. Unknown.

Holotype: ♀. Endoji (Angaku), 10/VIII, 1935, collected by H. K. KIM.

Habitat: Korea (Angaku).

Type in the Entomological Institute, Hokkaido Imperial University, Sapporo.

This species is easily distinguished from *Polochrum repandum* SPINOLA by the peculiar coloration of the body.

Japanese Name: *Chosen-ozu-mikobachi*.

## 摘 要

*Sapygidae* (ミコバチ科、巫女蜂科、新稱) は現在 *Sapyga*, *Sapygina*, *Polochrum* 及び *Polochridium* 等の4属により代表せらるゝ蜂の1群にして、先學の報ずるところに據れば、その2、3の種は花蜂類の巢を襲ひ、貯藏せる蜜を侵食すると云ふ。而して未だ本邦より記録せられたるものなかりしも、著者等は今回朝鮮より *Polochrum* に屬する1新種を得たれば、これに *Polochrum koreanum* SUGIHARA et KIM テウセンオホヅミコバチと命名し、これを茲に公表せり。