



|                  |   |
|------------------|---|
| Title            | Two new Butterflies from Formosa  |
| Author(s)        | Matsumura, S.   |
| Citation         | Insecta matsumurana, 10(4), 127-128   |
| Issue Date       | 1936-06   |
| Doc URL          | <a href="http://hdl.handle.net/2115/9325">http://hdl.handle.net/2115/9325</a> |
| Type             | bulletin (article)  |
| File Information | 10(4)_p127-128.pdf  |



[Instructions for use](#)

## TWO NEW BUTTERFLIES FROM FORMOSA

By

Prof. S. MATSUMURA

(With 2 Textfigures)

Recently the author has received 2 new butterflies from Formosa which were sent for identification by Mr. S. HIRAYAMA. The diagnosis is as follows:

### *Hestina assimilis hirayamai* n. f.

Differs from the subspecies *formosana* MOOR. in the following points:

♀. Primaries lack the middle series of the white spots and from the 4 spots of the innermost series send longitudinally each a white bar towards the termen.

Secondaries with the terminal series of the white spots distinctly obscure, lacking the grayish colour in the reddish ring-spot; the reddish w-shaped marking at the anal angle with no white spot. The reddish ring-spot in the interspace 4 at the underside becomes a mere speck and the lower parts of the ring-spots in the 2nd and 3rd interspaces obscure, while the lower arm of each ring not reaching the inner white spots.

Hab.—Formosa; one female specimen was collected on December 1st, 1935, by Mr. S. HIRAYAMA at Musha.

### *Huphina nadina hirayamai* n. f.

Differs from the subspecies *eunama* FRUHS. in the following characters:

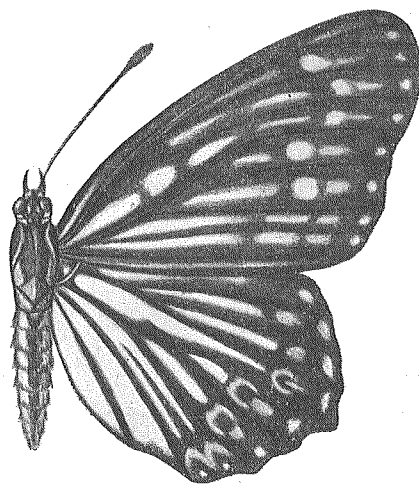


Fig. 1

*Hestina assimilis hirayamai* n. f. (♀)

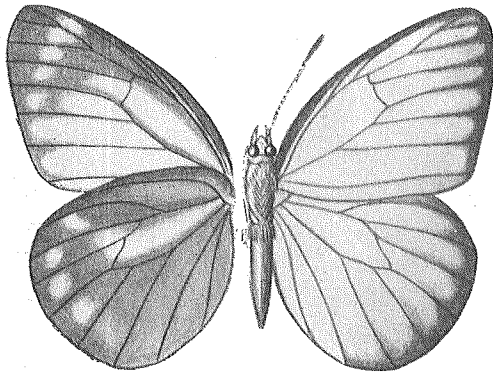


Fig. 2

*Huphina nadina hirayamai* n. f. (♂)

♂. The blackish part of the wings replaced by a light brownish colour and all the interspaces being not infuscated, while those of the secondaries with a light shade of brown.

Underside ochraceous instead of the greenish gray, the discoidal whity patch being much larger and with the terminal spots more conspicuous.

Hab.—Formosa; one male specimen was collected by Mr. S. HIRAYAMA at Musha.

## TWO NEW SPECIES OF *APHIDIDAE* FROM HOKKAIDO

By

MOTONORI INOUE

(With two Textfigures)

In the course of the writer's studies on the aphid pests of trees in the forest zone of Hokkaido, two species which are injurious to coniferous trees were found. So far as his examinations are concerned these species are new to science. They will be described hereafter. In the near future the writer proposes to report on the biology of them.

The writer wishes to express his cordial thanks to Dr. K. ISHIHARA, director of the Hokkaido Forestry Experimental Station, for his kindness while the investigations were agreeably conducted. An expression of gratitude is also due to Dr. S. KUWAYAMA for his kind advice in many ways. Sincere thanks are also tendered to Dr. T. UCHIDA and Mr. M. HORI for their kindness in examining Dr. MATSUMURA's type-specimens of *Aphididae* deposited in the Entomological Museum, Hokkaido Imperial University.