



Title	On two new melanic Forms of <i>Limenitis camilla</i> L.
Author(s)	Kuru, Masaru
Citation	<i>Insecta matsumurana</i> , 12(2-3), 89-90
Issue Date	1938-03
Doc URL	http://hdl.handle.net/2115/9374
Type	bulletin (article)
File Information	12(2-3)_p89-90.pdf



[Instructions for use](#)

ON TWO NEW MELANIC FORMS OF
LIMENITIS CAMILLA L.

By

MASARU KURU

(久留勝)

(With one Textfigure)

Among the butterfly-collection of the late Mr. TOMOO KONDÔ, which was recently presented by Dr. D. MINAMI to the author, two new melanic forms of *Limenitis camilla japonica* MÉN were found. They will be described in this paper as follows:

***Limenitis camilla* f. *kondoi* n. f.** (Fig. I. a, b.)

Upperside: Both wings are almost homogeneously fuscous, except the white ciliae along the termen and the scarcely visible white area at the marginal part of the 3rd cell of the fore wing. Underside: On the fore wing the white area is limited in the marginal triangular spot and in the narrow stripe along the interior margin; on this wing the brown red taint remains principally in the anterior half, especially along the veins and in the transverse band of the middle cell, the other parts being entirely fuscous. On the secondary the marginal 3 crescents in the 2nd, 3rd and 4th interspaces are conjoined with the submarginal ones and enlarged; the other parts are brownish red. Among the basal black spots of this wing only one in the 7th cell is distinctly preserved, the others being enlarged and obscured into longitudinal fuscous stripes. The submarginal two series of black patches on both wings are entirely disappeared.

Hab.: One male specimen was collected at Nikkô by T. KONDÔ (7. Sep. 1925).

The holotype is now preserved in the cabinet of the author.

To the honour of the collector the name of *kondoi* is dedicated.

***Limenitis camilla* f. *minamii* n. f.** (Fig. I. c, d)

The principal white stripe on the upper side is scarcely distinguishable. The submarginal 2 series of black patches on the fore wing almost disappeared,

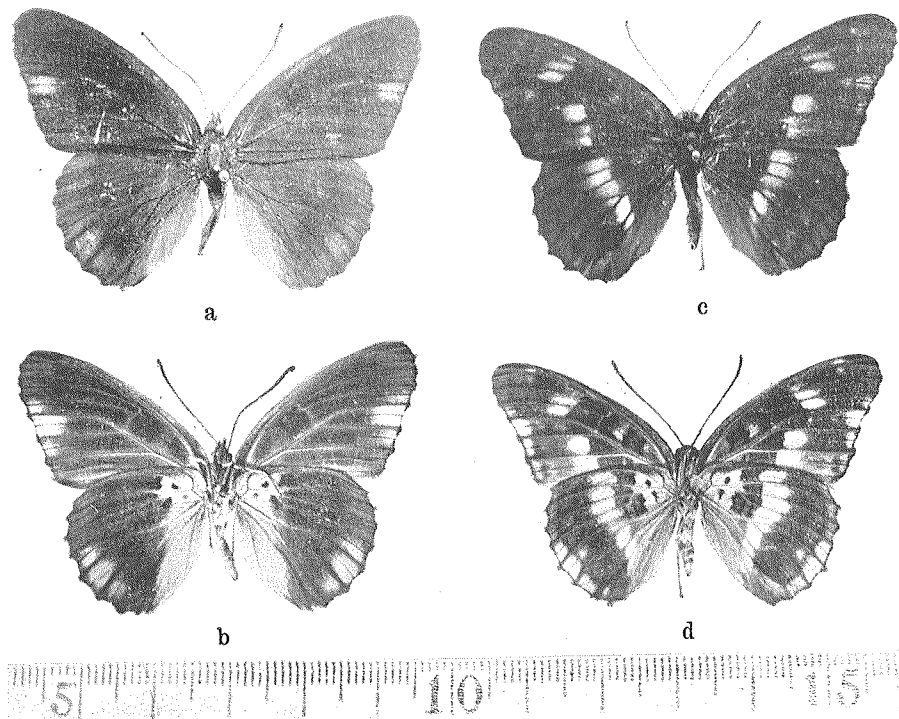


Fig. 1

- a) *Limenitis camilla* f. *kondoii* KURU (n. f.) (upper side)
- b) *Limenitis camilla* f. *kondoii* KURU (n. f.) (under side)
- c) *Limenitis camilla* f. *minamii* KURU (n. f.) (upper side)
- d) *Limenitis camilla* f. *minamii* KURU (n. f.) (under side)

while on the hind wing only the basal series being visible; the marginal crescents in the 2nd, 3rd and 4th interspaces of the hind wing are conjoined with the submarginal ones and enlarged. Both transverse white stripes in the middle cell of the fore wing are scarcely visible.

Hab.: One male specimen was caught at Nikkô by T. KONDÔ (July 1925). The holotype is now preserved in the cabinet of the author.

It may be permitted to express here my gratitude to Prof. S. MATSUMURA and to Dr. W. NAKAHARA for their kind advice and revision of this manuscript.