



Title	A new Chalcidoid Wasp reared from Anthonomus bisignifer Schenkling
Author(s)	ISHII, Tei
Citation	Insecta matsumurana, 14(2-3), 83-84
Issue Date	1940-03
Doc URL	<a href="http://hdl.handle.net/2115/9440">http://hdl.handle.net/2115/9440</a>
Type	bulletin (article)
File Information	14(2-3)_p83-84.pdf



[Instructions for use](#)

# A NEW CHALCIDOID-WASP REARED FROM *ANTHONOMUS BISIGNIFER* SCHENKLING

By

TEI ISHII

(石井 悌)

Tokyo College of Agriculture and Forestry

(With One Text-figure)

Genus *Catolaccus* THOMSON

Hym. Skand., vol. 5, 1878, pp. 146, 152.

## *Catolaccus endonis* n. sp.

♀. Head, thorax and abdomen black with greenish reflections. Tegulae yellowish brown. Antennae yellowish brown except the scape which is yellowish at the basal two-thirds. Mandibles pale yellowish brown and the teeth brown. Wings hyaline, the veins pale yellowish brown. Legs yellowish except all the coxae which are concolorous with the body.

Head wider than deep (45 : 38) and minutely raised-reticulate, however, the clypeal area longitudinally striate; clypeal edge considerably sinuate; ocelli in an obtuse-angled triangle, the posterior pair separated from the inner eye margins by 4 times as long as their own diameter; occiput immargined; toruli a little below the middle of the face and very near one another. Mandibles distinctly 4-dentate. Antennal scape slender and cylindrical; pedicel nearly twice as long as wide at the apex; the first ring joint slightly smaller than the second; the first funicular joint a little shorter than the pedicel and as long as wide; the next 3 joints almost similar to the first; other joints broken and missed.

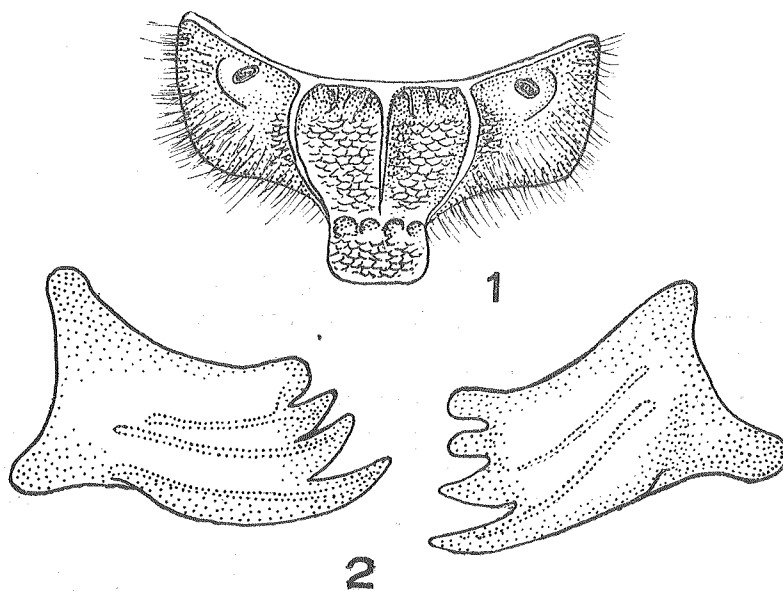
Thoracic notum minutely raised-reticulate with sparse greyish hairs. Parapsidal furrows absent.

Propodeum scaly reticulate with the middle and lateral keels; there are dense whitish hairs on each side, spiracles long ovate; nucha differentiated by a transverse slightly arched, more or less foveolated furrow; pleura raised-reticulate except the mesoepimerum which is smooth.

Fore wings 1.6 mm. in length and 0.7 mm. in width, and uniformly ciliate except the basal parts; submarginal, marginal, stigmal and postmarginal veins approximately in the ratio of 35 : 20 : 14 : 18. Hind wings 1.2 mm. in length

and 0.33 mm. in width, and uniformly ciliate.

Abdomen long ovate and pointed towards the tip with sparse greyish hairs on each side, and nearly smooth except the 6th-8th segments which are feebly



Text-figure

*Catolaccus endonis* n. sp.

1. Propodeum. 2. Mandibles.

shagreened; the second segment as long as the next 3 segments combined; the venter considerably carinate towards the base. Ovipositor hidden. Legs normal.

Length of body: 2 mm.

Only a female was reared from a larva of *Anthonomus bisignifer* SCHENKLING (= *Anthonomus bisignatus* ROELOFS) by KAZUE ENDO at Sapporo, Hokkaido, on July 1st, 1938.

This species differs from other known species in that the nucha of this species is differentiated by a transverse, slightly arched, foveolated furrow; in *C. carinatus* HOWARD from the Island of Grenada the nucha is differentiated by a transverse carina.