



Title	Sawflies of the Kurile Islands (2)
Author(s)	Takeuchi, Kichizo
Citation	Insecta matsumurana, 19(3-4), 71-81
Issue Date	1956-02
Doc URL	http://hdl.handle.net/2115/9565
Type	bulletin (article)
File Information	19(3-4)_p71-81.pdf



[Instructions for use](#)

INSECTA MATSUMURANA

Vol. 19

February, 1956

Nos. 3—4

SAWFLIES OF THE KURILE ISLANDS (II)

By KICHIZO TAKEUCHI

Takeuchi Entomological Laboratory,
Yamashina, Kyoto

(Continued from Vol. 19, p. 22)

46. *Tenthredo finschi seguro* subsp. nov.

♀. Identical in size and structure with the typical *finschi*, except somewhat long antennae. Differs in colour as follows: praescutum black without yellow V-mark, and abdomen mainly black above, with only narrow posterior margin of each segment yellow. Black line on mesepisternum and legs are fairly variable in size.

♂. Similar to the typical form, but usually somewhat larger in size (Length 9-10 mm.) and antennae are somewhat longer as in the female.

Habitat: Japan (Hokkaido, Honshu, Shikoku), Kuriles, Saghalien.

Holotype: ♀, Kamikochi, Shinano, 15, VIII, 1952, T. NAKANE leg. Allotype: ♂, Mt. Yari, Shinano, 17, VIII, 1936, K. TAKEUCHI leg. Paratypes: 2 ♂, Hachiman-taira, Ugo, 27, VII, 1950, S. ITO leg.; 2 ♀, Mt. Chokai, Ugo, 29, VII, 1948, K. SHIRAHATA leg.; 1 ♀, Mt. Zao, Rikuzen, 25, VII, 1936, K. SHIRAHATA leg.; 1 ♀, Ozenuma, Kozuke, 18, VII, 1952, S. ITO leg.; 1 ♀, Mt. Akagi, Kozuke, 2, VII, 1937, T. SUGIYAMA leg.; 1 ♀, Nikko, Shimozuke, 8, VIII, 1934, S. ISSIKI leg.; 1 ♂, Hoppo-onsen, Shinano, 10, VI, 1939, K. TAKEUCHI leg.; 4 ♀ 1 ♂, Mt. Shirouma, Shinano, 1, VIII, 1932, K. TAKEUCHI leg.; Tokugo-toge, Shinano, 4 ♀, 11, VIII, 1950, T. NAKANE leg.; 2 ♀, 23, VII, 1952, S. ITO leg.; 1 ♀, Abo-toge, Shinano, 3, VIII, 1953, K. TAKEUCHI leg.; 1 ♂, Mt. Jonen, Shinano, 16, VII, K. TAKEUCHI leg.; 1 ♀, Hakone, Sagami, 21, VII, 1937, K. TAKEUCHI leg.; 2 ♀ 2 ♂, Hakusan, Kaga, 24, VII, 1937, K. TAKEUCHI leg.; 1 ♀, Mt. Odai, Yamato, 6, VII, 1933, S. UCHIDA leg.; 1 ♀, Daisen, Hoki, 13, VII, 1917, K. TAKEUCHI leg.; 1 ♀, Omogo-kei, Iyo, 23, VII, 1949, M. MIYATAKE leg.; 2 ♀, Shikaribetsu, Hokkaido, 25, VII, 1939, K. TAKEUCHI leg.; 1 ♂, Sounkyo, Hokkaido, 4, VI, 1932, S. ISSIKI leg.; 2 ♀, Shikotan Is., Kuriles, 2, VIII, 1931, K. KOBAYASHI leg.; 1 ♀, Maruyama, Kunashiri Is., Kuriles, 26, VII, 1935, T. UCHIDA leg.; 1 ♀, Bettobu, Etorofu Is., Kuriles, 21, VII, 1936, Y. SUGIHARA leg.; 2 ♀ 1 ♂, Tokotan, Uruppu Is., Kuriles, 9-23, VIII, 1936, Y. SUGIHARA leg.; 1 ♀, Tonnai, Saghalien, 6, VIII, 1924, T. KANO leg.; 1 ♀, Mt.

Suzuya near Toyohara, Saghalien, 11, VII, 1930, K. TAKEUCHI leg.

47. *Tenthredo hokkaidonis* MALAISE, 1931

Kunashiri: Nikishiro, 1 ♀, 17-22, VII, 1935.

Distr.: Japan (Hokkaido, Honshu, Shikoku), Kuriles.

48. *Tenthredo sapporensis* (MATSUMURA, 1912)

Kunashiri: Maruyama, 2 ♂, 26, VII, 1935; Yambetsu, 1 ♂, 22-25, VII, 1935.

Distr.: Japan (Hokkaido), Kuriles, Saghalien.

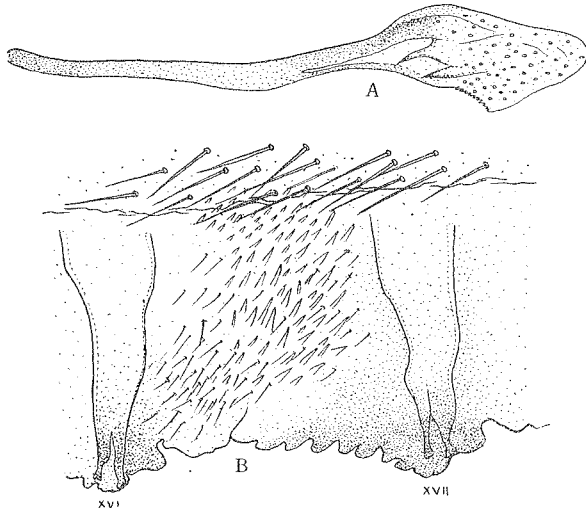


Fig. 8. *Tenthredo finschi seguro* subsp. nov.

A: penis valve ($\times 60$).

B: 17th tooth from apex of saw ($\times 600$).

49. *Tenthredo arcuata* FÖRSTER, 1771

Uruppu: Tokotan, 3 ♀ 3 ♂, 9-23, VIII, 1936.

Distr.: Kuriles, Korea, Mongolia, Siberia, Europe.

50. *Tenthredo devius* (KONOW, 1900)

Shumushu: Shirogasaki, 1 ♂, 17, VII, 1926. Paramushiru: Murakami-wan, 2 ♂, 25, VII, 1926; Minato, 1 ♀, 22, VII, 1926; Musashi-wan, 4 ♀, 23, VII, 1935.

Distr.: Japan (Hokkaido, Honshu), Kuriles, Siberia.

This species is one of the alpine insects in Japan.

51. *Jermakia sibirica* (KRIECHBAUMER, 1869)

Kunashiri: Nikishiro, 2 ♀ 4 ♂, 17-22, VII, 1935.

Distr.: Japan, Kuriles, Saghalien, Korea, China, Siberia.

52. *Rhogogaster varipes* (KIRBY, 1882)

Shikotan: Shakotan, 1 ♀ 1 ♂, 23-27, VII, 1935. Kunashiri: Yambetsu, 1 ♀, 22-25, VII, 1935; Nikishiro, 1 ♀, 17-22, VII, 1935. Etorofu: Rubetsu, 1 ♀ 1 ♂, 2-10, VII, 1935; Shana, 1 ♀ 1 ♂, 11-20, VII, 1935; Bettobu, 3 ♀, 11-13, VII, 1936; Porosu, 1 ♀, 14, VII, 1936.

Distr.: Japan, Kuriles, Saghalien.

Frequently mesosternum without black marking.

53. *Aglaostigma nebulosa* (ANDRÉ, 1881)

Kunashiri: Nikishiro, 2 ♀, 17-22, VII, 1935. Etorofu: Bettobu, 1 ♀, 11-13, VII, 1936; Seseki, 1 ♂, 16-18, VII, 1936.

Distr.: Japan, Kuriles, Saghalien, Korea, Siberia, E. Europe.

54. *Aglaostigma aucupariae* (KLUG, 1814)

Shikotan: Matakotan, 1 ♀, 27-30, VII, 1935.

Distr.: Kuriles, Siberia, Caucasus, Europe.

Differs from the typical form of Europe in having pale tarsi.

55. *Tenthredopsis inornata* CAMERON, 1881

Shikotan: Shakotan, 1 ♀ 1 ♂, 23-27, VII, 1935. Kunashiri: Nikishiro, 2 ♀, 17-22, 1935; Yambetsu, 3 ♀, 22-25, VII, 1935. Etorofu: Shana, 1 ♀, 11-20, VII, 1935; Seseki, 1 ♂, 16-18, VII, 1936; Rubetsu, 1 ♀ 1 ♂, 2-10, VII, 1935; Shamanbe, 2 ♂, 19-20, VII, 1936; Naipo, 1 ♀ 8 ♂, 7, VII, 1935.

Distr.: Kuriles, Saghalien, Siberia, Europe.

56. *Tenthredopsis inornata diluta* KONOW, 1890

Shikotan: Matakotan, 1 ♀, 27-30, VII, 1935; Shakotan, 3 ♀, 23-27, VII, 1935. Paramushiru: Suribachi, 1 ♀, 23, VII, 1935.

Distr.: Japan (Hokkaido), Kuriles, Saghalien, Korea, Siberia, Europe.

57. *Tenthredopsis carinata* MALAISE, 1931

Shikotan: Shakotan, 4 ♂, 23-27, VII, 1935; Matakotan, 2 ♂, 27-30, VII, 1935. Kunashiri: Yambetsu, 1 ♂, 22-25, VII, 1935; Nikishiro, 1 ♂, 17-22, VII, 1935.

Distr.: Japan (Hokkaido, Honshu), Kuriles, Saghalien, Kamtchatka.

58. *Tenthredopsis carinata japonica* subsp. nov.

♀. Length 9-12 mm. Colour black, with the following parts white: clypeus, labrum, bases of mandibles, inner orbits narrowly, scutellum (sometimes black), both sides of 2nd to 6th abdominal tergites, middle part of venter, all trochanters, apices of front femora and their tibiae in front, and four apical segments of hind tarsi (except apical half of the last including claws). Wings hyaline, nervures dark brown, base of stigma white.

Structure similar to the typical *carinata*.

♂. Length 9-11 mm. Similar in colour and structure to the typical *carinata*, but the hind femora at least partly black.

Habitat: Japan, Kuriles.

Holotype: ♀, Mt. Buna, Omi, 3, VII, 1939, K. TAKEUCHI leg. Allotype: ♂, same data as the holotype. Paratypes: 1♀, Sounkyo, Hokkaido, 16, VII, 1930, K. TAKEUCHI leg.; 1♀, Mt. Hakkoda, Mutsu, 10, VII, 1932, K. TAKEUCHI leg.; 1♀ 1♂, Kuroyu, Ugo, 14, VII, 1951, S. ITO leg.; 1♀, Ozenuma, Kozuke, 18, VII, 1952, S. ITO leg.; Tokugo-toge, Shinano, 2♀ 1♂, 7, VII, 1929, K. TAKEUCHI leg.; 3♀, 15, VII, 1950, T. NAKANE leg.; 1♀, Mt. Shirouma, Shinano, 1, VIII, 1932, K. TAKEUCHI leg.; 1♀, Kurobe, Echchu, 21, VI, 1931, K. TAKEUCHI leg.; 3♀ 1♂, Mt. Ibuki, Omi, 2, VI, 1917, K. TAKEUCHI leg.; 1♀ 3♂, Mt. Hira, Omi, 22, VI, 1927, K. TAKEUCHI leg.; 2♂, Mt. Atago near Kyoto, 12, VI, 1932, K. TAKEUCHI leg.; Kibune near Kyoto, 1♀, 18, V, 1930, 1♂, 11, V, 1939, K. TAKEUCHI leg.; 1♂, Sasayama, Tanba, 18, V, 1952, K. TAKEUCHI leg.; 1♀, Hyonoson, Tajima, 27, V, 1953, K. TAKEUCHI leg.; 1♀, Mt. Odai, Yamato, 5, VII, 1932, C. TERANISHI leg.; 1♀, Osugidani, Ise, 11, VI, 1952, M. KOYAMA leg.; Daisen, Hoki.

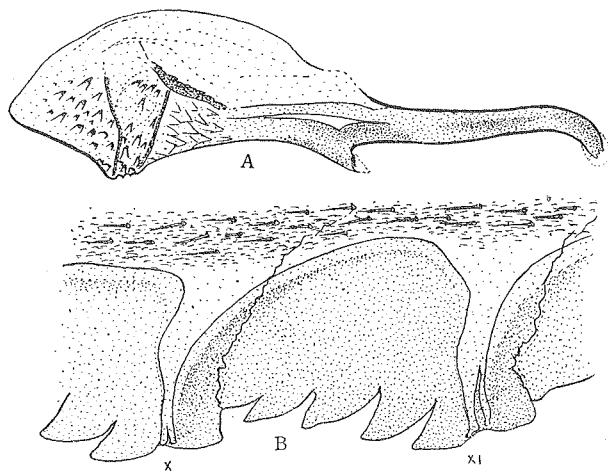


Fig. 9. *Tenthredopsis carinata japonica* subsp. nov.

A: penis valve ($\times 60$).

B: 11th tooth from apex of saw ($\times 600$).

1♀, 15, VII, 1920; 1♀ 3♂, 7, VI, 1933, K. TAKEUCHI leg.; 2♂, Mt. Kanmuri, Aki, 1, VI, 1953, S. ISSIKI leg.; 3♀, Iya, Awa, VI, 1930, K. TAKEUCHI leg.; 1♀, Mt. Tsurugi, Awa, 30, V, 1950, S. ISSIKI leg.; 1♂, Naidaijin, Higo, 25, V, 1952, S. ITO leg.; 1♀ 3♂, Mt. Sobo, Bungo, 8, VII, 1932, H. HORI leg.; Kunashiri Is., Kuriles, 1♀, Yambetsu, 22-25, VII, 1935, 1♂, Seseki, 27-28, VII, 1935, T. UCHIDA leg.

All the types, except some paratypes, are preserved in the Takeuchi Entomological Laboratory.

Due to its black colouring, this subspecies is most likely to be confused with the melanic form of *T. nassata*, but may be separated from it by the

longer antennae and strongly concave postocellar area.

59. *Macrophya infumata* ROHWER, 1925

Kunashiri: Maruyama, 1 ♀, 26, VII, 1935. Etorofu: Shamanbe, 1 ♀, 19-20, VII, 1936.

Distr.: Japan (Hokkaido, Honshu), Kuriles, Saghalien, Korea, China, E. Siberia.

60. *Macrophya apicalis* SMITH, 1874

Kunashiri: Maruyama, 2 ♀, VII, 1935; Seseki, 2 ♀, 27-28, VII, 1935; Nikishiro, 1 ♀, 17-22, VII, 1935.

Distr.: Japan, Kuriles.

61. *Macrophya carbonaria* SMITH, 1874

Kunashiri: Maruyama, 5 ♀ 1 ♂, 26, VII, 1935; Seseki, 2 ♀, 27-28, VII, 1935; Nikishiro, 3 ♀, 17-22, VII, 1935.

Distr.: Japan, Kuriles, Saghalien.

62. *Macrophya annulitibia* TAKEUCHI, 1933

Etorofu: Bettobu, 1 ♀, 11-12, VII, 1936; Seseki, 1 ♂, 16-18, VII, 1936; Shana, 1 ♀, 22-25, VII, 1936.

Distr.: Japan (Hokkaido, Honshu), Kuriles, Saghalien, Korea.

63. *Macrophya maculitibia* TAKEUCHI, 1933

Kunashiri: Nikishiro, 2 ♀, 17-22, VII, 1935; Seseki, 1 ♀, 27-28, VII, 1935.

Distr.: Japan (Hokkaido, Honshu, Shikoku), Kuriles, Saghalien, Korea.

64. *Macrophya imitator* TAKEUCHI, 1937

Kunashiri: Seseki, 2 ♀, 27-28, VII, 1935.

Distr.: Japan (Hokkaido, Honshu), Kuriles, Saghalien, Korea.

65. *Pachyprotasis antennata* (KLUG, 1814)

Shikotan: Shakotan, 2 ♂, 23-27, VII, 1935. Etorofu: Shana, 2 ♀, 11-20, VII, 1935, 3 ♂, 22-25, VII, 1936; Seseki, 1 ♀, 16-18, VII, 1936; Shamanbe, 1 ♀, 19-20, VII, 1936. Uruppu: Tokotan, 3 ♀, 9-23, VIII, 1936.

Distr.: Japan, Kuriles, Saghalien, China, Siberia, Europe.

66. *Pachyprotasis erratica* SMITH, 1874

Shikotan: Shakotan, 1 ♂, 23-27, VII, 1935. Kunashiri: Yambetsu, 2 ♀, 22-25, VII, 1935. Etorofu: Naipo, 1 ♀, 7, VII, 1935; Shamanbe, 2 ♂, 19-20, VII, 1936.

Distr.: Japan, Kuriles, Saghalien, Formosa ?.

67. *Pachyprotasis rapae* (LINNÉ, 1767)

Etorofu: Seseki, 3 ♀ 1 ♂, 16-18, VII, 1936; Rubetsu, 2 ♀ 3 ♂, 2-10, VII, 1935; Naipo, 1 ♀, 7, VII, 1935; Shamanbe, 1 ♂, 19-20, VII, 1936; Shana, 2 ♀, 11-20, VII, 1935 et 22-25, VII, 1936. Uruppu: Tokotan, 4 ♀, 9-23, VIII, 1936.

Distr.: Japan (Hokkaido, Honshu), Kuriles, Saghalien, Korea, China, Siberia, Caucasus, Europe.

68. *Pachyprotasis longicornis* JAKOVLEV, 1891

Kunashiri: Nikishiro, 2♀, 17-22, VII, 1935.

Distr.: Japan (Hokkaido, Honshu), Kuriles, Saghalien, China.

69. *Pachyprotasis elegans* sp. nov.

Closely allied to *P. longicornis* and *P. pallidistigma*, but may be easily separated from them by the smooth head and thorax, and much smaller size.

♀. Length 7 mm. Colour quite similar to *P. longicornis*. Saw-sheath variable in colour, usually pale and with black apex, rarely mainly black. Extent of black in abdomen is also variable to some degree. Wings hyaline, costa and stigma pale yellow (in life may be green).

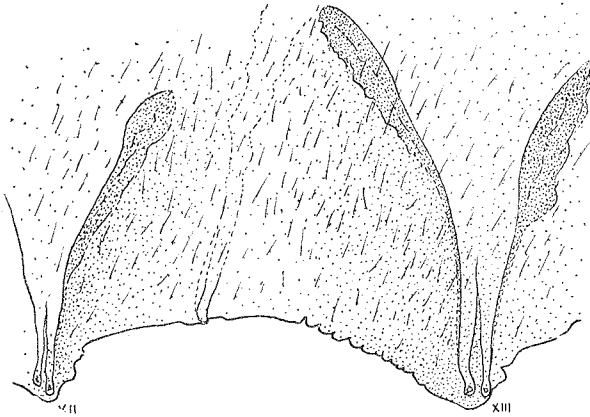


Fig. 10. *Pachyprotasis elegans* sp. nov.
13th tooth from apex of saw ($\times 600$).

Head smooth, practically without surface sculpture, but frontal area more or less coriaceous, seen from above slightly transverse. Labrum distinctly convex, and broadly truncate in front. Clypeus slightly convex, broadly and arcuately emarginate in front. Frontal area variable in shape. Postocellar area slightly transverse about 11:9. Ocellocular and ocellocipital lines as 11:9. Eye in dorsal view about 3.5 times as long as postocular area. Malar space slightly longer than ocellar diameter. Antenna about twice as long as head and thorax combined, relative length of segments about 2: 1.2: 9: 7.5: 5.5: 4.5: 4: 4: 3.5; pedicel about as long as wide; penultimate segment about 4 times as long as wide. Thorax smooth, practically impunctate, when magnified $\times 45$ pronotum and mesepisternum feebly coriaceous. Hind basitarsus about as long as the following segments combined.

♂. Unknown.

Habitat: Kuriles.

Holotype: ♀, Shakotan, Shikotan Is., 23-27, VII, 1935 Y. SUGIHARA leg.
 Paratypes: 1 ♀, same data as the holotype; 2 ♀, Yambetsu, Kunashiri Is., 22-25, VII, 1935, T. UCHIDA leg.; 1 ♀, Shana, Etorofu Is., 11-20, VII, 1935, Y. SUGIHARA leg.; 2 ♀, Tokotan, Uruppu Is., 9-23, VIII, 1936, Y. SUGIHARA leg.

Some paratypes are preserved in the Takeuchi Entomological Laboratory.

70. *Siobla sturmii* (KLUG, 1814)

Kunashiri: Nikishiro, 4 ♀ 4 ♂, 17-22, VII, 1935; Yambetsu, 1 ♀ 1 ♂, 22-25, VII, 1935; Maruyama, 1 ♀ 3 ♂, 26, VII, 1935.

Distr.: Japan (Hokkaido, Honshu), Kuriles, Saghalien, Siberia, Europe.

Subfamily Allantinae

71. *Taxonus fulvicornis* MATSUMURA, 1912

Kunashiri: Yambetsu, 2 ♀, 22-25, VII, 1935; Maruyama, 1 ♀, 26, VII, 1935.

Distr.: Japan, Kuriles, Korea, Siberia.

72. *Allantus calliblepharus* (KONOW, 1900)

Etorofu: Shana, 1 ♀, 11-20, VII, 1935.

Distr.: Japan (Hokkaido, Honshu), Kuriles, Saghalien, Siberia.

73. *Emphytus albicinctus* (MATSUMURA, 1912)

Shikotan: Shakotan, 1 ♀, 23-31, VII, 1936. Kunashiri: Yambetsu, 1 ♀, 22-25, VII, 1935; Nikishiro, 1 ♂, 17-22, VII, 1935.

Distr.: Japan (Hokkaido, Honshu), Kuriles, Saghalien.

74. *Emphytus basalis* (KLUG, 1814)

Etorofu: Naiho, 1 ♂, 18, VII, 1937; Seseki, 1 ♀, 16-18, VII, 1936.

Distr.: Japan (Hokkaido, Honshu), Kuriles, Saghalien, China, Siberia, Europe.

75. *Emphytus cingillipes* KONTUNIEMI, 1947

Kunashiri: Yambetsu, 1 ♀, 22-25, VII, 1935.

Distr.: Japan (Honshu), Kuriles, Korea, Europe (Finland).

76. *Protemphytus longicornis* (TAKEUCHI, 1929)

Kunashiri: Yambetsu, 1 ♀, 22-25, VII, 1935.

Distr.: Japan (Honshu, Shikoku), Kuriles.

77. *Eriocampa mitsukurii* (ROHWER, 1910)

Kunashiri: Yambetsu, 1 ♀, 22-25, VII, 1935; Seseki, 1 ♀, 16-18, VII, 1936.

Distr.: Japan, Kuriles, Saghalien, Formosa.

78. *Athlaia japonica* (KLUG, 1813)

Kunashiri: Nikishiro, 1 ♀ 3 ♂, 17-22, VII, 1935; Yambetsu, 1 ♀ 1 ♂, 22-25, VII, 1935.

Distr.: Japan, Kuriles, Saghalien, Korea, China, Siberia.

Subfamily **Blennocampinae**79. *Phymatoceropsis japonica* (MALAISE, 1931)

Etorofu: Porosu, 1♂, 14-15, VII, 1936; Seseki (Bettobu), 1♀, 16-18, VII, 1936.

Distr.: Japan (Hokkaido, Honshu, Shikoku), Kuriles, Saghalien.

Subfamily **Heterarthrinae**80. *Fenusa dohrnii* (TISCHBEIN, 1846)

Shikotan: Shakotan, 1♂, 23-27, VII, 1935.

Distr.: Japan (Honshu), Kuriles, Europe, N. America.

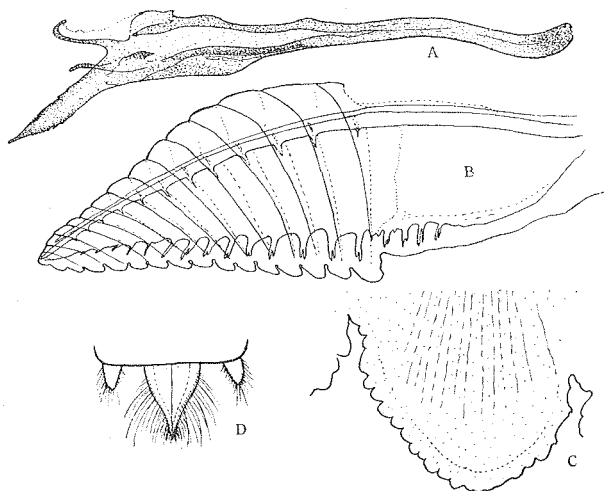


Fig. 11. *Trichiocampus pruni* sp. nov.

A: penis valve ($\times 100$). B: saw ($\times 100$).

C: 13th tooth from apex of saw ($\times 1350$).

D: apical portion of ♀ abdomen in dorsal view.

Subfamily **Nematinae**81. *Trichiocampus pruni* sp. nov.

? 1931 *Trichiocampus* sp. IJIMA, Oyo Dobutsugaku Zasshi, 3(3): 188.

1949 *Trichiocampus pruni* TAKEUCHI (in litt.), Trans. Kansai Ent. Soc., 14 (2): 48.

Most closely allied to *T. ulmi* from Europe, but may be easily separated from that species by the black legs. Larva feeds on *Prunus* spp.

♀. Length 4.5-5 mm. Colour entirely black, but apices of mandibles, tibiae

and tarsi more or less brownish. Wings strongly infusate uniformly, nervures and stigma dark brown.

Whole insect shining, practically impunctate. Head seen from above transverse and distinctly narrowed behind eyes. Clypeus gently convex, and very shallowly emarginate in front. Supraclypeal area strongly convex, but not carinated. Median fovea of frons well defined, and U-shaped in outline. Frontal area slightly concave and without a marginal wall. Postocellar, ocellocular and ocelloccipital lines as 6 : 7 : 5. Postocellar area convex, and much wider than long. Eye in dorsal view about twice as long as postocular area. Antenna setaceous, slightly shorter than length of body; scape and pedicel much wider than long; 3rd segment shorter than the 4th (about 7 : 9). Front basitarsus about as long as three following segments combined. Claws with a small inner tooth.

♂. Length 4-5 mm. As in ♀ except for the sexual characters.

Habitat: Japan (Hokkaido, Honshu), Kuriles.

Holotype: ♀, Kyoto, 2, V, 1937, K. TAKEUCHI leg. Allotype: ♂, Kyoto, 21, IV, 1951, K. TAKEUCHI leg. Paratypes: 9 ♀ 8 ♂, Kyoto, K. TAKEUCHI leg.; 1 ♀, Minoo near Osaka, 18, V, 1917, K. TAKEUCHI leg.; 1 ♀, Gifu, Mino, 10, V, 1919, K. TAKEUCHI leg.; 1 ♀ 1 ♂, Tokyo, H. YUASA leg.; 3 ♂, Sapporo, Hokkaido, T. UCHIDA leg.; 1 ♀, Rubetsu, Etorofu, Is., 2-10, VII, 1935, Y. SUGIHARA leg.

All the types, except a paratype, are preserved in the Takeuchi Entomological Laboratory.

82. *Priophorus varipes* (LEPELETIER, 1823)

Etorofu: Shamanbe, 1 ♀, 19-20, VII, 1936. Uruppu: Tokotan, 1 ♂, 9-23, VIII, 1936.

Distr.: Kuriles, Saghalien, Siberia, Europe.

83. *Nematinus acuminatus* (C. G. THOMSON, 1871)

Etorofu: Horobetsu, 1 ♀, 4, VII, 1935.

Distr.: Kuriles, Saghalien, Siberia, Europe.

84. *Nematinus rubrocaudatus* sp. nov.

In having acuminate sheath, this species somewhat resembles *N. acuminatus*, but may be easily separated from it by the peculiar coloration.

♀. Length 8-9 mm. Colour black with the following parts reddish yellow: clypeus, labrum, mandibles (except apices), palpi, cheeks, temples, sometimes inner orbits, posterior angles of pronotum, tegulae and last abdominal segment excluding sheath. Antennae yellowish brown, with two basal segments and upper side of the 3rd and 4th segments black or dark brown. Legs dusky yellow, with all coxae (except apices), apical half of hind femora and apices of hind tibiae dark brown; apex of each tarsal segment more or less brownish. Wings hyaline, nervures dark brown, costa and stigma yellow.

Head shining, with small, obscure punctures, seen from above transverse and slightly swollen behind eyes. Clypeus deeply subtriangularly emarginate in front and with large subtriangular lobes. Supraclypeal area gently convex.

Median fovea of frons well defined, nearly V-shaped in outline. Frontal area usually defined by the walls, and subpentagonal in outline, frontal wall always open at the middle. Postocellar, ocellocular and ocelloccipital lines as 7 : 8 : 7. Postocellar area pentagonal, median length : hind width about 7 : 10. Antenna normal. Thorax obscurely shining, with small sparse punctures almost uniformly. 1st cubital cross-vein always present in fore wings; length of 3rd cubital cell variable, but usually slightly shorter than the 2nd cell. Inner spur of hind tibia about half length of hind basitarsus; claws cleft, inner ray somewhat shorter and stouter than the outer. Five basal abdominal tergites more or less coriaceous and with small, obscure punctures. Saw-sheath (fig. 12) strongly tapering apically and obtusely pointed at the apex.

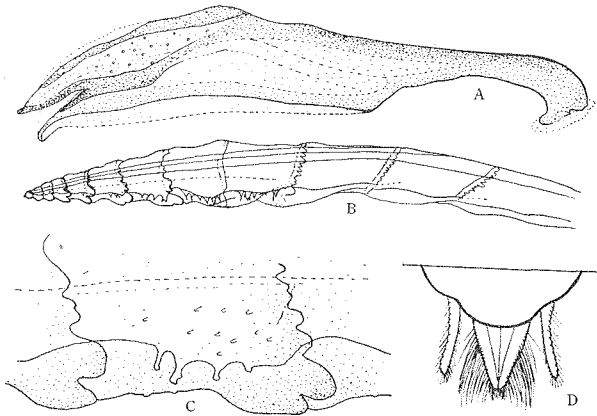


Fig. 12. *Nematus rubrocaudatus* sp. nov.

A: penis valve ($\times 50$). B: saw ($\times 50$).

C: 7th tooth from apex of saw ($\times 200$).

D: apical portion of ♀ abdomen in dorsal view.

♂. Length 7 mm. Colour black with the following parts reddish yellow: clypeus in front, labrum, bases of mandibles, palpi, sometimes temples, tegulae and the last abdominal sternite. Antennae and wings as in female. Legs reddish yellow, with only bases of coxae black.

Habitat: Japan (Honshu), Kuriles.

Holotype: ♀, Tokugo-toge, Shinano, 7, VI, 1929, K. TAKEUCHI leg. Allotype: ♂, Tokugo-toge, Shinano, 7, VI, 1939, K. TAKEUCHI leg. Paratypes: 1 ♂, same data as the holotype: 1 ♀ 3 ♂, same data as the allotype; Kamikochi, Shinano, 2 ♀, 19, VII, 1931, K. IWATA leg.; 1 ♀, 30, VI, 1930, N. KUMAZAWA leg.; 3 ♀ 1 ♂, 20, VI, 1951, T. NAKANE leg.; 1 ♀, Mt. Jonen, Shinano, 16, VII, 1929, K. TAKEUCHI leg.; 1 ♂, Matakotan, Shikotan, 27-30, VII, 1935, Y. SUGIHARA leg.

This species seems to be fairly variable in colour. In a female paratype,

mesonotum with some yellow markings and upper half of mesepisternum yellow.

All the types, except a paratype, are preserved in the Takeuchi Entomological Laboratory.

85. *Pachynematus runicis lugens* ENSLIN, 1916

Kunashiri: Nikishiro, 7 ♀ 5 ♂, 17-22, VII, 1935. Etorofu: Shana, 2 ♀ 1 ♂, 11-20, VII, 1935; Horobetsu, 1 ♂, 4, VII, 1935; Rubetsu, 1 ♀, 2-10, VII, 1935.

Distr.: Kuriles, Saghalien, Siberia, Europe.

86. *Pristiphora pallidiventris* (FALLEN, 1808)

Shikotan: Shakotan, 1 ♀, 27-31, VII, 1936. Etorofu: Horobetsu, 1 ♀, 4, VII, 1935.

Distr.: Kuriles, Siberia, Europe.

Addendum

Family Xiphydriidae

Xiphydria camelus (LINNÉ, 1758)

Kunashiri: Nikishiro, 1 ♀, 17-23, VII, 1935.

Distr.: Japan (Hokkaido, Honshu, Shikoku), Kuriles, Saghalien, Siberia, Europe.