



|                  |   |
|------------------|---|
| Title            | Description of a new species of the genus <i>Elachiptera</i> Macquart occurring in Japan (Diptera, Chloropidae) |
| Author(s)        | Nishijima, Yutaka   |
| Citation         | <i>Insecta matsumurana</i> , 20(1-2), 19-20   |
| Issue Date       | 1956-06   |
| Doc URL          | <a href="http://hdl.handle.net/2115/9577">http://hdl.handle.net/2115/9577</a>                                   |
| Type             | bulletin (article)  |
| File Information | 20(1-2)_p19-20.pdf  |



[Instructions for use](#)

DESCRIPTION OF A NEW SPECIES OF THE  
GENUS *ELACHIPTERA* MACQUART  
OCCURRING IN JAPAN

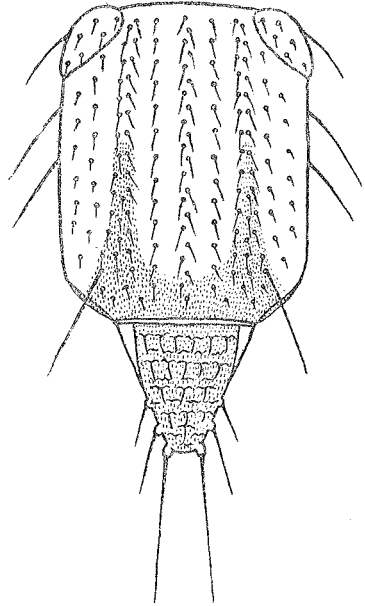
(Diptera, Chloropidae)

By YUTAKA NISHIJIMA

Entomological Institute, Hokkaido University

*Elachiptera japonica* sp. nov.

Male and female. Head broader than the thorax. Front brownish black; posterior margin extremely narrowed by the frontal triangle; anterior margin rounded. Frontal triangle relatively large, shining black; posterior margin broadly occupying the vertex; apical corner reaching almost five-sixths the length of the front. Ocellar spot half-shining black and slightly convex. Compound eyes with sparse white pubescence. Outer vertical bristles very strong, as long as the postvertical bristles. Inner vertical bristles much shorter than the ocellar bristles. Two pairs of bristles in fronto-orbital row long, the posterior ones on the median portion of front approximately as long as the ocellar bristles. Seven pairs of interfrontal bristles arranged inside along the frontal triangle. Antennae orange yellow; dorsum somewhat darkened. Arista black, broadened with blackish dense pubescence, as long as the front; more or less sharpened at the apex. Occiput entirely black. Mesofacial and parafacial plates dark brown with silver dense pubescence, the former with a median keel. Parafacial plate approximately half the width of the mesofacial plate at the vibrissal angle. Palpi orange yellow. Clypeus and labellum dark brown. Thorax entirely black, the humeral calli sometimes brown. Mesonotum polished, longer than wide, the pollen occurring weakly along the posterior half of dorsocentral rows. Pleura glistening black. Halteres pale yellow. Scutellum trapezoidal in outline, apically subtruncate,



*Elachiptera japonica* sp. nov.

Thorax (dorsal aspect).

as long as wide; the disk flattened, pollinose and rugulose, with two pairs of small and rounded marginal tubercles produced; apical marginal bristles approximately three times as long as the lateral ones and slightly longer than the scutellum. Abdomen half-shining black to brown; basal two tergites usually brownish. Legs brown, with some infuscation on the hind femur distally, and hind tibia usually extensively infuscated at the middle. Wings more or less tinged with brown;  $r_{4+5}$  nealy straight and parallel to  $m_{1+2}$ ;  $rm$  crossvein shorter than one-third the length of  $m$  crossvein.

Body length: 2.3-3.0 mm.

Holotype: 1 ♂, Niimi-Onsen, Hokkaido, 4, VIII, 1953, Y. NISHIJIMA leg.

Allotype: 1 ♀, Jyozankei, Hokkaido, 19, VII, 1953, Y. NISHIJIMA leg.

Paratypes: 1 ♀, Sapporo, Hokkaido, 9, VIII, 1951; 2 ♂ ♂, Mt. Daisetsu, Hokkaido, 26, VII, 1951; 1 ♂, Mt. Meakan, Hokkaido, 16, VII, 1951; 3 ♂ ♂, Sapporo, 26, VI, 1952; 3 ♂ ♂, 2 ♀ ♀, Ibid., 28, VI, 1952; 2 ♂ ♂, 5 ♀ ♀, Jyozankei, 19, VII, 1953; 3 ♀ ♀, 4 ♂ ♂, Niimi-Onsen, 4, VIII, 1953; 1 ♂, Mt. Tokachi, Hokkaido, 18, VII, 1954, Y. NISHIJIMA leg.; 1 ♂, Oze, Gunma-Ken, 22, IX, 1950, H. HASEGAWA leg.

All the types are preserved in the collection of Entomological Institute of Hokkaido University.

This species closely resembles *E. tuberculifera* (CORTI) in colour pattern and in arrangement of interfrontal bristles, but it may be easily distinguishable from the latter by the feature of mesonotum. In structure of mesonotum and scutellar tubercles it is rather similar *E. cornuta* (FALLÉN), from which it may be quite distinct in having the large frontal triangle, the yellowish palpi and the brownish wings.