



Title	A new species of the genus <i>Ropronia</i> from Saghalien (Hymenoptera, Roproniidae)
Author(s)	Yasumatsu, Keizo
Citation	<i>Insecta matsumurana</i> , 21(3-4): 112-114
Issue Date	1958-03
Doc URL	http://hdl.handle.net/2115/9620
Type	bulletin
File Information	21(3-4)_p112-114.pdf



[Instructions for use](#)

A NEW SPECIES OF THE GENUS *ROPRONIA*
FROM SAGHALIEN

(Hymenoptera, Roproniidae)

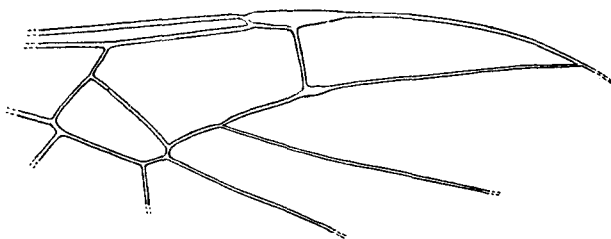
By KEIZO YASUMATSU

Entomological Laboratory, Kyushu University, Fukuoka

Dr. CHIHISA WATANABE has sent me a new species of the Roproniidae taken by him in Saghalien. This species is very closely allied to *Ropronia garmani* ASHMEAD which is very common in the Transitional Zone of eastern North America and seems to belong to a species-complex with it. These two forms seem to be fully differentiated morphologically and isolated zoogeographically.

Ropronia watanabei sp. nov.

♂. Black. Head except dorsal half, mouth parts, antenna except above, lateral margin of pronotum, tegula, trochanters, fore and mid-coxae, tibiae and



A part of fore wing of *Ropronia watanabei* sp. nov.

tarsi, fore and mid-femora except the central portion, basal one-fifth of hind femora, basal half of hind tibiae, base of hind basitarsi and apex of the abdominal petiole whitish to whitish-gray. Abdomen black. In *garmani* male with the second abdominal segment ferruginous with its base and apex infuscate; female with abdomen ferruginous except that the subgenital plate and the base of the second segment are somewhat infuscate, or that the abdomen rarely colored as in the male.

Face with a median dorsal longitudinal tubercle as in *garmani*; frons and top of head with rather coarse and weak, rather small punctures; second flagellar segment about three times as long as wide, mesoscutum with medium-sized

punctures, the diameter of one puncture greater than the distance between two punctures; scutellum with the disc convex but not semicircularly raised; dorsum of propodeum in profile not so strongly curved as in *garmani*, but gently curved; venation as in the text-figure, 2r is perpendicular to Rs which is almost straight (in *garmani* 2r is oblique to Rs which is slightly angled at the junction with 2r); first tergite about four times as long as deep in profile; second more than three times as long as deep in profile.

Length of body ca. 5 mm.

Length of fore wing ca. 4.5 mm.

Habitat. Saghalien.

Holotype. Male, Habomai, a village situated between Maoka and Noda, Saghalien, 11. viii. 1934, Dr. C. WATANABE leg., in the collection of the Entomological Institute, Hokkaido University, Sapporo.

The genus *Ropronia* has not been recorded previously from Saghalien.

Key to the species of *Ropronia*

(Modified from YASUMATSU, 1956)

1. Head and thorax mostly or entirely ferruginous; postscutellum elevated as an acute pyramid (U. S. A.). *californica* ASHMEAD, 1899
- Head and thorax black, sometimes marked with white; postscutellum convex, not conspicuously elevated. 2
2. Nervulus antefurcal; frons and top of head coarsely rugosopunctate (Canada and U. S. A.). *pediculata* PROVANCHER, 1886
- Nervulus postfurcal; frons and top of head not rugosopunctate 3
3. Fore wing with a large fuscous spot below stigma (China and Japan).
- *brevicornis* TOWNES, 1948
- Fore wing without a spot. 4
4. Head, seen in front, much wider than high; top of head with rather close, sharp, medium-sized punctures; mesoscutum with medium-sized punctures separated by about their diameter (U. S. A.). . . *garmani* ASHMEAD, 1899
- Head, seen in front, much wider than high; top of head with rather coarse, weak, rather small punctures; mesoscutum with medium-sized punctures, the diameter of one puncture greater than the distance between two punctures (Saghalien). *watanabei* YASUMATSU, 1958
- Head, seen in front, subcircular in outline; top of head impunctate; mesoscutum almost impunctate or with some very minute punctures. . . . 5
5. Head, seen in profile, with eyes about as long as temples; second abdominal tergite, seen in profile, with a greatly curved dorsal line (♀); dorsal area of the abdominal petiole densely and distinctly punctured; second discoidal cell of fore wing very narrow, distinctly more than twice as long as wide (Japan). *townesi* YASUMATSU, 1956
- Head, seen in profile, with eyes distinctly shorter than temples; second abdominal tergite, seen in profile, with a highly curved dorsal line (♀); dorsal area of the abdominal petiole with some irregular sculpture; second

discoidal cell of fore wing not very narrow, about twice as long as wide (Japan). *ishiharai* YASUMATSU, 1956

I wish to thank Dr. C. WATANABE for kindly sending me the specimen of this new species and Mr. KARL V. KROMBEIN for his kind criticism of my paper.

Literature

- CHAO, H.-F. 1957. A note on *Ropronia brevicornis* TOWNES (Hymenoptera, Roproniidae). Fukien Agr. Jour., no. 5: 73-76.
- TOWNES, H. 1948. The Serphoid Hymenoptera of the family Roproniidae. Proc. U. S. National Museum, vol. 98, no. 3224: 85-89.
- YASUMATSU, K. 1956. Two new species of Roproniidae (Hymenoptera). Insecta Matsumurana, vol. 19, nos. 3-4: 117-122.