



Title	Three Chalcidoid wasps collected at Nakajima, Shikoku (Hymenoptera)
Author(s)	Tachikawa, Tetsusaburo; Takechi, Fumihiko
Citation	Insecta matsumurana, 22(1-2), 35-36
Issue Date	1958-10
Doc URL	http://hdl.handle.net/2115/9632
Type	bulletin (article)
File Information	22(1-2)_p35-36.pdf



[Instructions for use](#)

THREE CHALCIDOID WASPS COLLECTED AT NAKAJIMA, SHIKOKU

(Hymenoptera)

TETSUSABURO TACHIKAWA and FUMIHIKO TAKECHI

Entomological Laboratory, College of Agriculture,
Ehime University

The three Chalcidoid wasps dealt with here were determined by the senior author basing upon the materials which were collected by the junior author at Nakajima, a small island near Matsuyama City, on October 12th and 13th, 1957 by sweeping.

On this occasion the authors wish to express their sincere thanks to Dr. KEIZO YASUMATSU for his kind guidance rendered in the course of the present work.

1. *Hockeria bifasciata* WALKER (Chalcididae)

One female was collected on October 13th. After careful examination, the senior author reached the conclusion that this specimen may be identified as *Hockeria bifasciata* WALKER, although the body colour of the present specimen differs partially from the typical one as given in the following description.

It is of interest to report here the occurrence of the present species from Japan, since the species has hitherto been known only from Europe.

Female. Apical halves of tegulae dark brown. Legs black except for the following parts which are reddish brown: all of trochanters, tarsi and spurs; basal one third of middle femora; basal extreme tips of anterior and middle tibiae; apical tips of anterior and hind tibiae; and apical halves of middle tibiae. Wing-marks are as shown in the figure.

The other characters are almost in agreement with the description given by Z. BOUČEK (Acta Entomologica Musei Nationalis Pragae, XXVII, 1951, Supplementum 1: 70).

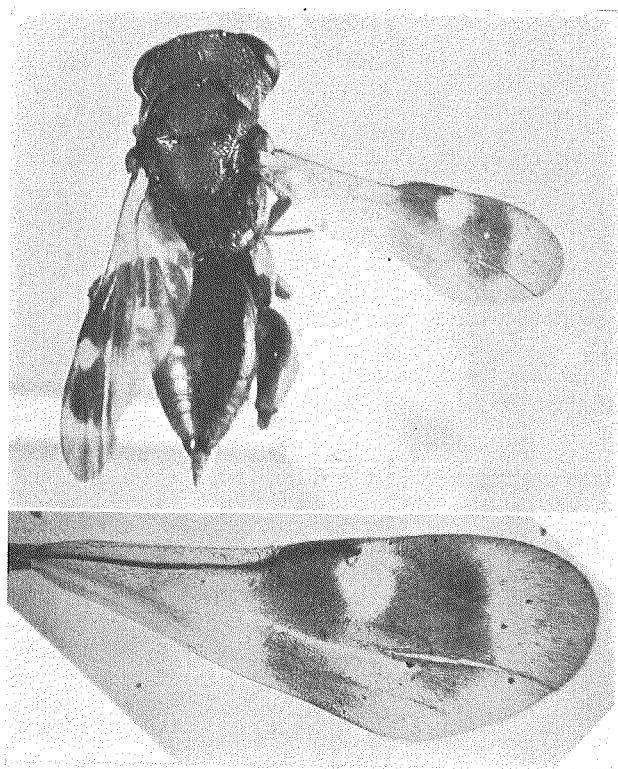
2. *Anabrolepis japonica* ISHII (Encyrtidae)

One female was collected on October 12th. This species has so far been recorded only from Kyushu, Japan.

3. *Callipteroma kinshuinensis* ISHII (Encyrtidae)

One female was collected on October 13th. This Encyrtid wasp is so common that a great number of individuals of this species have been collected

by the senior author by sweeping on the grass belonging to the family Graminae at Matsuyama, but the host of the present wasp is not yet known.



Hockeria bifasciata WALKER, female.