



Title	A new species of Pinnaspis from the Philippines (Homoptera : Coccoidea)
Author(s)	Takagi, Sadao
Citation	Insecta matsumurana, 25(2), 137-138
Issue Date	1963-04
Doc URL	http://hdl.handle.net/2115/9697
Type	bulletin (article)
File Information	25(2)_p137-138.pdf



[Instructions for use](#)

**A NEW SPECIES OF PINNASPIS FROM
THE PHILIPPINES**
(HOMOPTERA : COCCOIDEA)

By SADAŌ TAKAGI
Entomological Institute, Faculty of Agriculture,
Hokkaido University, Sapporo

Mr. M. Yamamoto of the Plant Protection Station at Kōbe has been engaged in investigating scale insects introduced with bananas for recent years. During his investigations have been found not only specimens of interest in regard to hosts and localities, but also those representing a new species, which, being left to my study, is described below.

Pinnaspis musae, sp. nov.

Adult female slender, fusiform, and membraneous except for sclerotized areas of pygidium, attaining 1.4 mm. in length. Antennae set moderately apart, with a long seta. Anterior spiracles with a rather small cluster of disc pores; posterior spiracles with two to six disc pores. Lateral lobes of metathorax and free abdominal segments strongly developed, with macroducts scattered. Marginal macroducts of pygidium seven in number on each side. Dorsal macroducts present on third to fifth abdominal segments in both submedian and submarginal series; third abdominal segment with two to four macroducts in submedian series and seven to ten, including one at margin, in submarginal series; fourth with two to five in the submedian and three to seven in the submarginal; fifth with one or two in the submedian and two to four in the submarginal. Preanal scars present, slender. Perivulvar pores numerous in five groups. Median lobes moderately large, strongly sclerotized, appressed together along entire mesal length, incised three or four times on lateral margins; zygotis produced anteriorly beyond bases of median lobes. Second lobes membraneous, the inner lobule elongate and expanded apically, without basal paraphyses, the outer one shorter than the inner but well developed and rather robust. Third lobes indicated by marginal serrations. A minute submarginal gland spine present on metathorax; a somewhat larger, conical one on first abdominal segment and one to three on the second; two to four elongate marginal gland spines on the third, two on the fourth, and four single ones caudad of the fourth. Scale of female broad and brown.

Collected on bananas imported from Illigan, the Philippines (12. VI, 1962, M. Yamamoto). Type slide including four adult females deposited in the collection of the Entomological Institute, Hokkaido University, and two other slides including three adult females in that of Mr. M. Yamamoto.

This species is related to *Pinnaspis aspidistrae* (Signoret) and *Pinnaspis strachani*

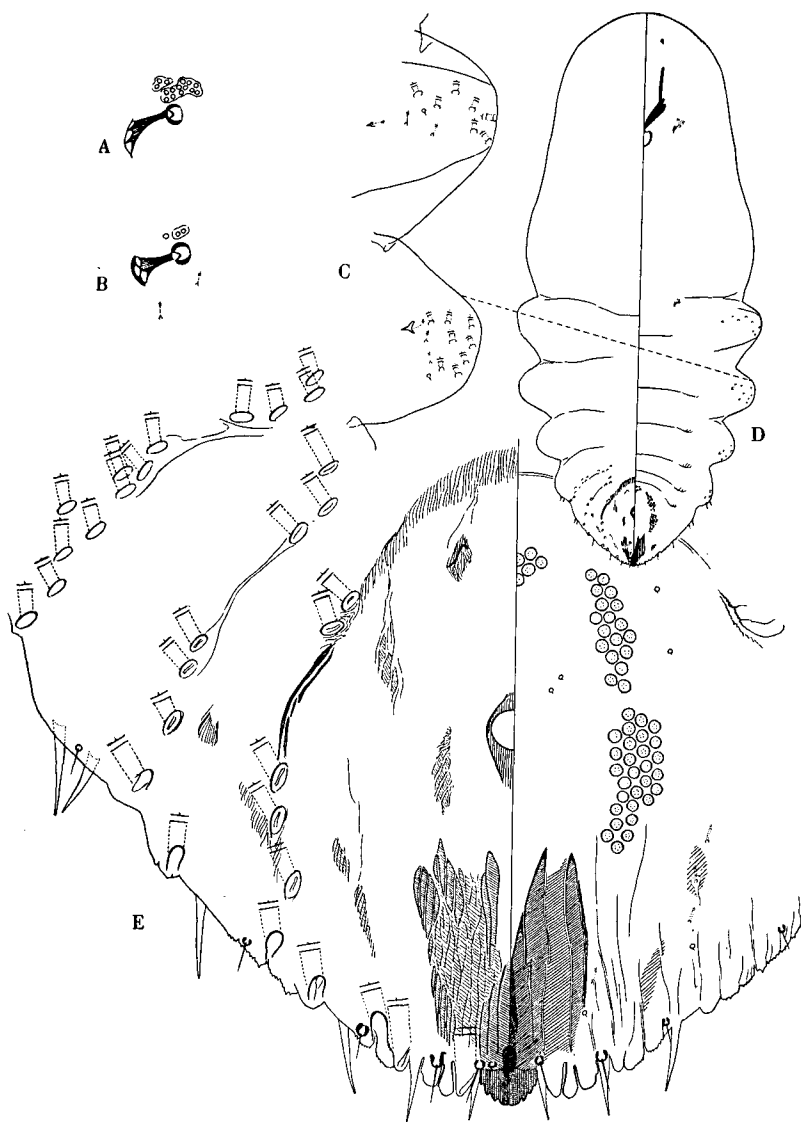


Fig. 1. *Pinnaepis musae*, sp. nov.

Adult female: anterior spiracle (A); posterior spiracle (B); lateral lobes of metathorax and first abdominal segment (C); body (D); pygidium (E).

(Cooley), from which it may be easily recognized by the combination of the following characters:—presence of submedian macroducts on third to fifth abdominal segments; presence of preanal scars; absence of basal paraphyses on inner lobules of second lobes; presence of disc pores at posterior spiracles; and scale brown.