



HOKKAIDO UNIVERSITY

| | |
|------------------|---|
| Title | Phylogeny of Eurasian soricine shrews (Insectivora, Mammalia) inferred from the mitochondrial cytochrome b gene sequences |
| Author(s) | Ohdachi, Satoshi; Masuda, Ryuichi; Abe, Hisashi et al. |
| Citation | Zoological Science, 14(3), 527-532 https://doi.org/10.2108/zsj.14.527 |
| Issue Date | 1997-06 |
| Doc URL | https://hdl.handle.net/2115/44316 |
| Type | journal article |
| File Information | ZS14-3_527-532.pdf |



Phylogeny of Eurasian Soricine Shrews (Insectivora, Mammalia) Inferred from the Mitochondrial Cytochrome *b* Gene Sequences

Satoshi Ohdachi^{1*}, Ryuichi Masuda², Hisashi Abe³, Jun Adachi^{4,7},
Nikolai E. Dokuchaev⁵, Voitto Haukialmi⁶
and Michihiro C. Yoshida²

¹*Institute of Low Temperature Science, Hokkaido University,
Sapporo 060, Japan*

²*Chromosome Research Unit, Faculty of Science, Hokkaido University,
Sapporo 060, Japan*

³*Laboratory of Applied Zoology, Faculty of Agriculture, Hokkaido University,
Sapporo 060, Japan*

⁴*Institute of Statistical Mathematics, Minato-ku, Tokyo 106, Japan*

⁵*Institute of Biological Problems of the North, Magadan, Russia*

⁶*Department of Ecology and Systematics, University of Helsinki,
Helsinki, Finland*

ABSTRACT—Phylogenetic relationships among 31 operational taxonomic units of shrews (Soricidae, Mammalia), mainly from eastern Eurasia, were inferred from partial nucleotide sequences of the mitochondrial cytochrome *b* gene by maximum likelihood (ML) and neighbor joining (NJ) methods. Eleven monophyletic groups were recognized among the soricine shrews examined in the ML tree. However, branching orders of the groups were obscure judging from the local bootstrap values, and two out of the 11 groups were not monophyletic in the NJ tree. The phylogenetic relationships among *Sorex caecutiens*, *S. shinto*, and *S. sardonis* in the Japanese and Sakhalin islands, whose taxonomy was controversial, were clarified. *S. shinto* in the Honshu and Shikoku Islands is genetically differentiated enough to be considered a separate species from *S. caecutiens*, while *S. sardonis* could be treated as a subspecies of *S. shinto*. Some other taxonomic problems are also discussed.

INTRODUCTION

The modern Soricidae (Insectivora, Mammalia) is divided into two subfamilies, the Soricinae, red-toothed shrews, and the Crocidurinae, white-toothed shrews (Repenning, 1967). Some authors recognize a third subfamily, the Scutisoricinae (armored shrew), as being independent from the Crocidurinae (Simpson, 1945). Soricine shrews are distributed throughout the Holarctic region, consisting of approximately 110 species, while the crocidurines are diversified mainly in Africa and southern Asia (MacDonald, 1984; Abe, 1985; Corbet and Hill, 1986; Churchfield, 1990; Hutterer, 1993). In the northeastern Asiatic region, including eastern Siberia, up to 10 soricine species co-exist, with the highest species diversity in Eurasia

(Dolgov, 1985). Therefore, northeastern Asia is thought to be a key region in which to investigate the evolution of soricine shrews.

It is quite difficult to reconstruct the speciation process of shrews, because their fossil record is poor owing to minute and fragile skeletons (but see, Repenning, 1967; Savage and Russell, 1983; Reumer, 1987) and because their morphology is similar to each other (Churchfield, 1990). The recent development of molecular phylogenetics has made it relatively easy to estimate phylogenetic relationships among modern stocks, even if they have very similar morphologies. Phylogenetic relationships of some Nearctic and Palaeartic soricine species have been investigated by biochemical techniques (George, 1988; George and Sarich, 1994) and mitochondrial DNA (Stewart and Baker, 1994; Taberlet *et al.*, 1994). However, phylogenetic relationships based on molecular data among most Eurasian species remain unresolved, although Dannelid (1991) proposed a hypothetical phylogeny of Eurasian *Sorex*, mainly based on karyotypes.

* Corresponding author: Tel. +81-11-706-5499;
FAX. +81-11-706-7142.

⁷ Present address: Department of Zoology, University of Oxford,
Oxford OX1 3PS, UK.

Furthermore, the taxonomy of some Japanese shrews (*Sorex caecutiens*, *S. shinto*, and *S. sadonis*) is controversial, because of the difficulty of interpreting morphological data (Imaizumi, 1960; Abe, 1967; Yoshiyuki and Imaizumi, 1986).

The major objective of this paper is to estimate the phylogenetical relationships and to clarify the taxonomic status among species or populations of Eurasian soricine shrews, especially, those from northeastern Asia, where there is high species diversity. We determined partial nucleotide sequences of the mitochondrial cytochrome *b* gene, which is thought to be an appropriate marker to estimate phylogenetic relations at species or subspecies level (Zhang and Ryder, 1993; Cao *et al.*, 1994; Masuda and Yoshida, 1994a; Sturmbauer *et al.*, 1994; but see William *et al.*, 1995). Then, phylogeny of the shrews was estimated by using the maximum likelihood and the neighbor-joining methods.

MATERIALS AND METHODS

OTUs examined

Thirty one operational taxonomic units (OTUs) of shrews (Soricidae), a mole (*Mogera wogura*), and the rat (*Rattus norvegicus*)

were used for phylogenetic analysis (Table 1). These OTUs include all of the soricine species in northeastern Asia. We basically followed Hutterer's (1993) nomenclature; however, *Sorex caecutiens* in Hokkaido ('Ezo-togarinezumi' shrew) and *Mogera wogura* ('Kobemogura' mole) were used (Abe, 1967, 1995), instead of *S. shinto* and *M. robusta* by Hutterer (1993), respectively. Tribe names followed those used by Repenning (1967).

Sequencing of DNA

The first 402-base region of the mitochondrial cytochrome *b* gene was sequenced. Total DNAs were extracted by the phenol/proteinase K/SDS method (Sambrook *et al.*, 1989) or by the Chelex[®] 100 method (procedure of 'Chelex DNA extraction from hair' in Walsh *et al.*, 1991). The DNA extracts (ca. 500 µl) from dried tissues of old samples (Table 1) using the first method were concentrated to ca. 45 µl with TE buffer (10 mM Tris: 1 mM EDTA, pH 7.0-7.5) using Centricon[™]-30 microconcentrator columns (Amicon). The 402-base cytochrome *b* region was sequenced using the PCR (polymerase chain reaction) product/direct sequencing technique by Kocher *et al.* (1989) with a modification of Masuda and Yoshida (1994a, b). A slight modification of the present study was that 0.5-2 µl bovine serum albumin (20 µg/µl) was added to a 50-µl PCR reaction mixture to eliminate reaction inhibitors (Cooper, 1994), when DNA extracts were from dried tissues by the phenol/proteinase K/SDS method. For the PCR amplification, the forward primers on the light strand were designed as 5'-GACCAA-TGATATGAAAACCATCG-3' (L14721), 5'-GATATGAAAACCATC-

Table 1. Abbreviations and sources of the OTUs examined

| Abbr. of OTU | Scientific name | Sources |
|------------------------|----------------------------------|---|
| | | locality; collection date; tissue; original no. (deposit) |
| <i>S.cae</i> -Fin | <i>Sorex caecutiens</i> | Lapland, Finland; Jul-94; liver in ethanol; 365 (VH) |
| <i>S.cae</i> -Sib | <i>Sorex caecutiens</i> | Magadan State, Russia; Jun-95; muscle in ethanol; N26/95 (SO) |
| <i>S.cae</i> -Sak | <i>Sorex caecutiens</i> | Sakhalin Is., Russia; Aug-95; muscle in ethanol; 94sak4 (SO) |
| <i>S.cae</i> -Hok | <i>Sorex caecutiens</i> | Hokkaido Is., Japan; Jun-94; dried hindfoot; 94sc1 (SO) |
| <i>S.shin</i> -Hon | <i>Sorex shinto</i> | Nagano Pref., Honshu Is., Japan; Oct-92; dried muscle; 5800 (HA) |
| <i>S.shin</i> -Shik | <i>Sorex shinto</i> | Shikoku Is., Japan; Apr-59; dried hindfoot; 1211 (HA) |
| <i>S.sadonis</i> | <i>Sorex sadonis</i> | Sado Is., Japan; Nov-94; muscle in ethanol; 5961 (HA) |
| <i>S.minutiss.</i> | <i>Sorex minutissimus</i> | Hokkaido Is., Japan; Sep-94; muscle in ethanol; 94/9/16-1 (SO) |
| <i>S.hosonoi</i> | <i>Sorex hosonoi</i> | Nagano Pref., Honshu Is., Japan; Jul-59; dried skin; 1218 (HA) |
| <i>S.roboratus</i> | <i>Sorex roboratus</i> | Magadan State, Russia; Sep-66; dried hindfoot; 2814 (HA) |
| <i>S.minutus</i> | <i>Sorex minutus</i> | Lapland, Finland; Jul-94; liver in ethanol; 363 (VH) |
| <i>S.ung</i> -Sak | <i>Sorex unguiculatus</i> | Sakhalin Is., Russia; Aug-94; muscle in ethanol; 94sak1 (SO) |
| <i>S.ung</i> -Hok | <i>Sorex unguiculatus</i> | Hokkaido Is., Japan; Jun-94; liver in ethanol; 94su1 (SO) |
| <i>S.isodon</i> | <i>Sorex isodon</i> | Magadan State, Russia; Jul-95; muscle in ethanol; N36/95 (SO) |
| <i>S.grac</i> -Hok1, 2 | <i>Sorex gracillimus</i> | Hokkaido Is., Japan; Jun-94; muscle in ethanol; 94sg1, 94/9/14-6 (SO) |
| <i>S.grac</i> -Sak | <i>Sorex gracillimus</i> | Sakhalin Is., Russia; Aug-94; muscle in ethanol; 94sak2 (SO) |
| <i>S.daph</i> -Sib | <i>Sorex daphaenodon</i> | Primorskiy Territory, Russia; Sep-66; dried hindfoot; 696 (HA) |
| <i>S.daph</i> -Sak | <i>Sorex daphaenodon</i> | Sakhalin Is., Russia; Aug-95; muscle in ethanol; 95/8/19-1 (SO) |
| <i>S.tundrensis</i> | <i>Sorex tundrensis</i> | Tyumen State, Russia; Aug-65; dried hindfoot; 2962 (HA) |
| <i>S.araneus</i> | <i>Sorex araneus</i> | Lapland, Finland; Jul-94; liver in ethanol; 361 (VH) |
| <i>S.raddei</i> | <i>Sorex raddei</i> | Caucasian Region, Russia; May-67; dried forefoot; 74 (HA) |
| <i>S.mirabilis</i> | <i>Sorex mirabilis</i> | Primorskiy Territory, Russia; Jun-91; liver in ethanol; 96misc-1 (SO) |
| <i>S.cinereus</i> | <i>Sorex cinereus</i> | Alberta Province, Canada; Jul-72; dried forefoot; none (HA) |
| <i>S.fumeus</i> | <i>Sorex fumeus</i> | Pennsylvania State, U.S.A.; Sep-95; liver in ethanol; PA110 (VH) |
| <i>Ne.fodiens</i> | <i>Neomys fodiens</i> | southern Finland; Aug-88; liver in ethanol; 587 (VH) |
| <i>Ch.platycephala</i> | <i>Chimarrogale platycephala</i> | Shizuoka Pref., Honshu Is., Japan; Jun-82; dried hindfoot; 6095 (HA) |
| <i>So.nigrescens</i> | <i>Soriculus nigrescens</i> | central Nepal; Sep-75; dried hindfoot; 219 (HA) |
| <i>So.caudatus</i> | <i>Soriculus caudatus</i> | central Nepal; Sep-75; dried hindfoot; 134 (HA) |
| <i>Su.murinus</i> | <i>Suncus murinus</i> | Okinawa Is., Japan; Oct-92; frozen muscle; small (RM) |
| <i>Cr.dsinezumi</i> | <i>Crociodura dsinezumi</i> | Sado Is., Japan; Nov-94; muscle in ethanol; 5964 (HA) |
| <i>Mo.wogura</i> | <i>Mogera wogura</i> | Aichi Pref., Honshu Is., Japan; Jul-91; muscle in ethanol; 5727 (HA) |
| Rat | <i>Rattus norvegicus</i> | cited from Goertz and Feldmann (1982) |

VH = V. Haukismalmi, SO = S. Ohdachi, HA = H. Abe, RM = R. Masuda.

GTTG-3' (L14724), and 5'-AAAAACCATCGTTGTTATTCAACT-3' (L14734), and the reverse primer on the heavy strand as 5'-CTCAGAATGATATTTGTCCTCA-3' (H15149) and 5'-GCCCTCAG-AATGATATTTGTCCT-3' (H15151). Codes of primers in parentheses identify the light (L) or heavy (H) strand and the 3' end-position of the primer in the human mitochondrial DNA sequence (Anderson *et al.*, 1981). Internal primers were 5'-AGCAATACACTACACATCAGA-3' or 5'-CACATCTGCCGAGACGTAAA-3' for forward sequencing, and their complements for reverse sequencing. These internal primers were also used as forward or reverse primers for PCR when a full 402-base region could not be amplified. Choice of these primers was determined by 'trial and error' for each sample. For doubtful results, both forward and reverse sequencings were done. Sequence data are available from DNA Data Bank of Japan (<http://www.ddbj.nig.ac.jp>): accession numbers D85342-D85372 and D87025. Sequence of the rat was cited from Goetz and Feldman (1982).

Phylogenetic tree

A phylogenetic tree was inferred by the maximum likelihood (ML) method (Felsenstein, 1981), using the program NucML of MOLPHY Ver. 2.3 package (Adachi and Hasegawa, 1996). The third codon position of the cytochrome *b* gene (133 bases, excluding the first triplet) were included for analysis because few amino acid substitutions were found among the OTUs of the genus *Sorex*. A distance matrix was generated using a nucleotide substitution model by Hasegawa *et al.* (1985) and using the most likelihood value (25.5) of the rate of transition to transversion (α/β). The neighbor-joining tree (Saitou and Nei, 1987) was obtained using the distance matrix. Next, the tree which had the greatest log likelihood was searched for by using the local rearrangement search option of the NucML, starting from the neighbor-joining tree obtained (and also from some given topologies). To show the reliability of internal branches, local bootstrap values (Adachi and Hasegawa, 1996) of 1000 replications were calculated. The procedure using only the third codon position is not appropriate for the analysis

among distantly related OTUs because nucleotide substitutions would be saturated. To complement the weakness of the ML method using only the third codon position, the neighbor-joining (NJ) method was also performed using the full 402-base data sets. The NJ tree was obtained by the computer program CLUSTAL W Ver. 1.5 (Thompson *et al.*, 1994) with the multiple substitution correction (Kimura, 1980). Bootstrap values of 1000 replications were calculated to assess the confidence of internal branches. Relative efficiencies of some algorithms for phylogeny reconstruction using molecular data were examined by Hasegawa and Fujiwara (1993), where the ML method tended to find a correct phylogeny.

RESULTS

A 402-base region of the cytochrome *b* was successfully sequenced for all OTUs. No insertions or deletions were observed.

In the ML tree (Fig. 1), monophyly among the OTUs from the Soricinae and the genus *Sorex* was strongly supported by the local bootstrap value ($\geq 89\%$). We tentatively propose eleven groups within the soricine shrews examined, according to the bootstrap values of the ML tree ($\geq 65\%$): (1) *Soriculus* group (*Soriculus nigrescens* and *So. caudatus*, Asiatic mountain shrews), (2) *Neomys/Chimarrogale* group (*Neomys fodiens* and *Chimarrogale platycephala*, water shrews), (3) *cinereus/fumeus* group (*Sorex cinereus* and *S. fumeus*, the subgenus *Otisorex* in North America), (4) *S. raddei*, (5) *unguiculatus/isodon/mirabilis* group (*S. unguiculatus*, *S. isodon*, and *S. mirabilis*), (6) *araneus/tundrensis/daphaenodon* group (*S. araneus*, *S. tundrensis*, and *S. daphaenodon*), (7)

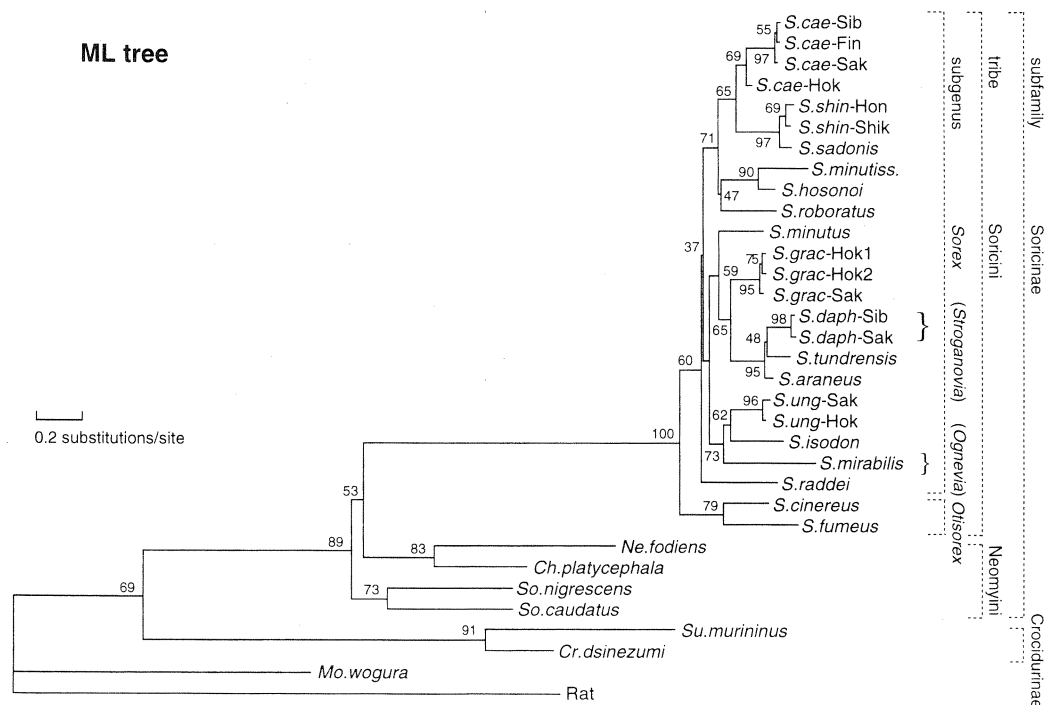


Fig. 1. The maximum likelihood (ML) tree by the nucleotide substitution model of Hasegawa *et al.* (1985), using third codon position (133 bases) of the mitochondrial cytochrome *b* gene sequences in insectivores. Branch length is proportional to the estimated number of nucleotide substitutions per site. Numbers near internal branches indicate the local bootstrap values (%) of 1000 replications.

S. caecutiens. On the other hand, Imaizumi (1960) treated *S. shinto* as a separate species from *S. caecutiens* and included “*S. caecutiens*” of Hokkaido and Sakhalin in *S. shinto* (names between double quotation marks are the usage in the present study). However, both of the ML and NJ trees produced two clusters in the *caecutiens/shinto* group (Figs. 1 and 2). One cluster consists of *S. caecutiens* in Finland, Siberia, Sakhalin, and Hokkaido, and the other contains *S. shinto* in Honshu and Shikoku and *S. sadonis*. The genetic distance between the two clusters is great enough to be regarded as a between species difference (Figs. 1 and 2). George (1988) also treated *S. shinto* as a separate species based on allozyme analysis. Yoshiyuki and Imaizumi (1986) described *S. sadonis* as a new species from the Sado Island, Japan. According to our usage of species names (Table 1), there would be no inconsistency between the nomenclature for *S. sadonis* and its phylogeny (Fig. 1). However, the genetic distance between *S. sadonis* and *S. shinto* appears to be small enough for these OTUs to be regarded as subspecies or populations, when compared with the distances among the other species examined (Figs. 1 and 2). Consequently, the usage of *S. shinto* or *S. shinto sadonis* might be appropriate for *S. sadonis*.

Branching orders among the groups suggested by the ML tree and among OTUs within the group were obscure within the genus *Sorex*, judging from the bootstrap values (Fig. 1). Further, many bootstrap values within *Sorex* were very low in the NJ tree (Fig. 2). Such uncertainty of the phylogenetical relationships of *Sorex* was probably caused by the insufficient data size. Data from longer sequences and other genes are needed to confirm the phylogenetical relationships of *Sorex*.

ACKNOWLEDGMENTS

We are grateful to V. Nesterenko, E. Pankakoski, H. Henttonen, and H. Shinyashiki for supplying some shrew samples. M. J. Toda and T. P. Craig critically commented on earlier versions of the manuscript. Without their cooperation, this work could not have been done. This study was supported in part by Grants-in-Aid for Scientific Research from the Ministry of Education, Science, Sports and Culture, Japan and by the cooperative research projects of the Institute of Low Temperature Science, Hokkaido University.

REFERENCES

- Abe H (1967) Classification and biology of Japanese Insectivora (Mammalia) I. Studies on variation and classification. *J Facul Agri, Hokkaido Univ* 55: 191–269
- Abe H (1985) Classification, distribution and ecology of the Soricidae, considered from the standpoint of adaptive radiation (in Japanese with English abstract). In “*Suncus. Biology of Soricids as Experimental Animals*” Ed by K Kondo, Gakkai Syuppan Center, Tokyo, pp 20–37
- Abe H (1995) Revision of the Asian moles of genus *Mogera*. *J Mamm Soc Japan* 20: 51–68
- Adachi J, Hasegawa M (1996) MOLPHY: Programs for Molecular Phylogenetics, ver 2.3. Institute of Statistical Mathematics, Tokyo
- Anderson S, Bankier AT, Barrell BG, De Bruijn MHL, Coulson AR, Drouin J, Eperon IC, Nierlich DO, Roe BA, Sanger F, Schreier PH, Smith AJH, Staden R, Young IG (1981) Sequence and organization of the human mitochondrial genome. *Nature* 290: 457–465
- Cao Y, Adachi J, Janke A, Pääbo S, Hasegawa M (1994) Phylogenetic relationships among eutherian orders estimated from inferred sequences of mitochondrial proteins: instability of a tree based on a single gene. *J Mol Evol* 39: 519–527
- Churchfield S (1990) *The Natural History of Shrews*. A & C Black, London
- Cooper A (1994) DNA from museum specimens. In “*Ancient DNA*” Ed by Herrmann B, Hummel S, Springer-Verlag, New York, pp 149–165
- Corbet GB, Hill JF (1986) *A World List of Mammalian Species*. 2nd ed, British Museum (Natural History), London
- Dannelid, E (1991) The genus *Sorex* (Mammalia, Soricidae) — distribution and evolutionary aspects of Eurasian species. *Mamm Rev* 21: 1–20
- Dolgov VA (1985) Shrews in the North, South, East and West (in Russian). Moscow Univ Press, Moscow
- Fedyk S, Ivanskaya EY (1972) Chromosomes of Siberian shrews. *Acta Theriol* 17: 475–492
- Felsenstein J (1981) Evolutionary trees from DNA sequences: a maximum likelihood approach. *J Mol Evol* 17: 368–376
- George SB (1988) Systematics, historical biogeography, and evolution of the genus *Sorex*. *J Mamm* 69: 443–461
- George SB, Sarich VM (1994) Albumin evolution in the Soricinae and its implications for the phylogenetic history of the Soricidae. In “*Advances in the Biology of Shrews*” Ed by Merritt JF, Kirkland Jr GL, Rose RK, Carnegie Museum of Natural History, Pittsburgh, pp 289–294
- Goertz G, Feldmann H (1982) Nucleotide sequence of the cytochrome b gene and adjacent regions from rat liver mitochondrial DNA. *Current Genetics* 5: 221–225
- Hasegawa M, Fujiwara M (1993) Relative efficiencies of the maximum likelihood, maximum parsimony, and neighbor-joining methods for estimating protein phylogeny. *Mol Phyl Evol* 2: 1–5
- Hasegawa M, Kishino H, Yano T (1985) Dating of the human-ape splitting by a molecular clock of mitochondrial DNA. *J Mol Evol* 22: 160–174
- Hutterer R (1993) Order Insectivora. In “*A Taxonomic and Geographic Reference. Mammal Species of the World 2nd ed*” Ed by Wilson DE, Reeder DM, Smithsonian Institution Press, Washington DC, pp 69–130
- Imaizumi Y (1960) *Coloured Illustrations of the Mammals of Japan* (in Japanese). Hoikusha Publishing Osaka
- Kimura M (1980) A simple method for estimating evolutionary rate of base substitutions through comparative studies of nucleotide sequences. *J Mol Evol* 16: 111–120
- Kocher TD, Thomas WK, Meyer A, Edwards SV, Pääbo S, Villablanca FX, Wilson AC (1989) Dynamics of mitochondrial DNA evolution in animals: amplification and sequencing with conserved primers. *Proc Natl Acad Sci USA* 86: 6196–6200
- MacDonald D (1984) *The Encyclopedia of Mammals. Facts on File*, New York
- Masuda R, Yoshida MC (1994a) A molecular phylogeny of the family mustelidae (Mammalia, Carnivora), based on comparison of mitochondrial cytochrome b nucleotide sequences. *Zool Sci* 11: 605–612
- Masuda R, Yoshida MC (1994b) Nucleotide sequence variation of cytochrome b genes in three species of weasels *Mustera itati*, *Mustela sibirica*, and *Mustela nivalis*, detected by improved PCR product-direct sequencing technique. *J Mamm Soc Japan* 19: 33–43
- Repenning CA (1967) Subfamilies and genera of the Soricidae. *Geol Surv Prof Paper* 565: 1–69
- Reumer JWF (1984) Ruscinian and early Pleistocene Soricidae (Insectivora, Mammalia) from Tegelen (The Netherlands) and Hungary. *Scripta Geologica* 73: 1–173
- Reumer JWF (1987) Redefinition of the Soricidae and the

- Heterosoricidae (Insectivora, Mammalia), with the description of the Crocidosoricinae, a new subfamily of Soricidae. *Revue de Paléobiologie* 6: 189–192
- Reumer JWF, Meylan A (1986) New developments in vertebrate cytotaxonomy IX. Chromosome numbers in the order Insectivora (Mammalia). *Genetica* 70: 119–151
- Saitou N, Nei M (1987) The neighbor-joining method: a new method for reconstructing phylogenetic trees. *Mol Biol Evol* 4: 406–425
- Sambrook J, Fritsch EF, Maniatis T (1989) *Molecular Cloning: A Laboratory Manual*. 2nd ed, Cold Spring Harbor Lab, New York
- Savage DE, Russell DE (1983) *Mammalian Paleofauna of the World*. Addison-Wesley Publishing, London
- Simpson GG (1945) *The Principle of Classification and a Classification of Mammals*. Bull Amer Mus Nat Hist 85, New York
- Stewart DT, Baker AJ (1994) Pattern of sequence variation in the mitochondrial D-loop region of shrews. *Mol Biol Evol* 11: 9–21
- Sturmbauer C, Verheyen E, Meyer A (1994) Mitochondrial phylogeny of the Lamprogini, the major substrate spawning lineage of cichlid fishes from lake Tanganyika in eastern Africa. *Mol Biol Evol* 11: 691–703
- Taberlet P, Fumagalli L, Hausser J (1994) Chromosomal versus mitochondrial DNA evolution: tracking the evolutionary history of the southwestern European populations of the *Sorex araneus* group (Mammalia, Insectivora). *Evolution* 48: 623–636
- Thompson JD, Higgins DG, Gibson TJ (1994) CLUSTAL W: improving the sensitivity of progressive multiple sequence alignment through sequence weighting, positions-specific gap penalties and weight matrix choice. *Nucleic Acids Res* 22: 4673–4680
- Walsh PS, Metzger DA, Higuchi R (1991) Chelex® 100 as a medium for simple extraction of DNA for PCR-based typing from forensic material. *BioTechniques* 10: 506–513
- William J, Ballard O, Kreitman M (1995) Is mitochondrial DNA a strictly neutral marker? *Trends Ecol Evol* 10: 485–488
- Yoshiyuki M, Imaizumi Y (1986) A new species of *Sorex* (Insectivora, Soricidae) from Sado Island, Japan. *Bull Natl Sci Mus, Tokyo, Ser A* 12: 185–193
- Zhang YP, Ryder O (1993) Mitochondrial DNA sequence evolution in the Arctoidea. *Proc Natl Acad Sci USA* 90: 9557–9561

(Received January 9, 1997 / Accepted February 20, 1997)