



# HOKKAIDO UNIVERSITY

Title	Phylogeographic origin of Hokkaido house mice ( <i>Mus musculus</i> ) as indicated by maternal, paternal and biparental inheritance molecules
Author(s)	Terashima, Mie; Furusawa, Shunsuke; Hanzawa, Naoto et al.
Description	Nature Publishing Group, Heredity, 96-2, 2006, 128-138 <a href="http://npg.nature.com/npg/servlet/Content?data=xml/02_welcome.xml&amp;style=xml/02_welcome.xml">http://npg.nature.com/npg/servlet/Content?data=xml/02_welcome.xml&amp;style=xml/02_welcome.xml</a>
Citation	Heredity, 96(2), 128-138 <a href="https://doi.org/10.1038/sj.hdy.6800761">https://doi.org/10.1038/sj.hdy.6800761</a>
Issue Date	2006-02
Doc URL	<a href="https://hdl.handle.net/2115/4868">https://hdl.handle.net/2115/4868</a>
Type	journal article
File Information	Heredity96-2.pdf



**Phylogeographic origin of Hokkaido house mice (*Mus musculus*) as indicated by maternal, paternal and biparental inheritance molecules**

5 Mie Terashima<sup>1</sup>, Shunsuke Furusawa<sup>2</sup>, Naoto Hanzawa<sup>2</sup>, Kimiyuki  
Tsuchiya<sup>3</sup>, Agutinus Suyanto<sup>4</sup>, Kazuo Moriwaki<sup>5</sup>, Hiromichi  
Yonekawa<sup>6</sup> and Hitoshi Suzuki<sup>1\*</sup>

<sup>1</sup>Laboratory of Ecology and Genetics, Graduate School of Environmental Earth  
10 Science, Hokkaido University, Kita-ku, Sapporo 060-0810, Japan,

<sup>2</sup>Department of Science, Yamagata University, Yamagata 990-8560, Japan,

<sup>3</sup>Laboratory of Wild Animals, Tokyo University of Agriculture, Atsugi  
243-0034, Japan,

<sup>4</sup>Research Centre and Development for Biology-LIPI, Cibinong 16911,  
15 Indonesia, <sup>5</sup>RIKEN, Bioresource Center, Tsukuba, Ibaraki 305-0074, Japan,

<sup>6</sup>Tokyo Metropolitan Institute of Medical Science, Bunkyo-ku, Tokyo 113-8613,  
Japan

\*Correspondence: E-mail: [htsuzuki@ees.hokudai.ac.jp](mailto:htsuzuki@ees.hokudai.ac.jp)

20 Laboratory of Ecology and Genetics, Graduate School of Environmental Earth

Science

Hokkaido University, North 10 West 5, Kita-ku, Sapporo, Hokkaido, 060-0810

Japan.

Tel/Fax: +81-11-706-2279

5

***Running head: phylogeographic origin of Hokkaido mice***

We examined intraspecies genetic variation in house mice (*Mus musculus*  
*molossinus*) from northern third of the Japanese Islands, namely Hokkaido and  
Tohoku districts, where the Southeast Asian *castaneus* subspecies group  
(designated as CAS) of mitochondrial DNA exists, instead of the North Asian  
5 *musculus* subspecies group (designated as MUS involving *M. m. musculus* and *M.*  
*m. molossinus*), despite of their morphological recognition as MUS. Our analysis  
of the mitochondrial cytochrome *b* gene sequence in mice from Hokkaido  
revealed that clear geographic partition of MUS and CAS types are found in  
southern and northern Hokkaido, respectively. Mice from Tohoku were  
10 polymorphic, possessing both MUS and CAS types without marked geographic  
subdivision. In contrast, the Hokkaido and Tohoku mice examined were found to  
posses a unique type for the Y-linked *Sry* gene, specific to Korea and Japan. The  
restriction site analysis for the nuclear ribosomal RNA gene with *EcoRI* and the  
28S rDNA probe showed consistent distribution of MUS and CAS types, as  
15 major and minor components, respectively, in the Hokkaido and Tohoku mice.  
These data support the previous notion that the Hokkaido and Tohoku mice  
experienced genetic hybridization between MUS and CAS types, possibly  
reflecting movements of pre-literature peoples. The spatial patterns of these three  
phylogenetic markers in mice from the northern Japan provide two alternative  
20 explanation ways for CAS mice, either as primary colonizer in or as secondary

migrants from the northern entrance.

**Key words:** mitochondrial DNA; phylogeography; rDNA-RFLP; secondary contact; Y-linked *Sry* gene; wild mouse

## Introduction

The way in which genetic diversity is generated and maintained is highly variable among species and perhaps even subtly unique for each species (Awise, 2000). The house mouse (*Mus musculus*) is a particularly fascinating subject for demographic and evolutionary studies, due in part to its extensive and polytypic natural distribution, but also on account of its long term association with people (Boursot *et al*, 1993) and propensity for accidental, long-distance dispersal. In addition, the biomedical importance of *M. musculus* provides the impetus for ongoing, studies of its ecology, morphology, cytology and genetics (Boursot *et al*, 1993; Moriwaki *et al*, 1994; Yonekawa *et al*, 2003). However, despite these efforts, our knowledge of this species remains inadequate in many respects. For example, there are still many unanswered questions regarding the time and place of origin of the various phylogenetic lineages of house mouse (variously treated in recent literature as subspecies, full species or ‘semispecies’), the timing and routes of dispersal of these lineages, and the subsequent mode of interaction among the lineages where they meet in secondary contact. Even more fundamentally, we are still seeking the most appropriate combinations of markers by which to characterize the genetic structure and determine the evolutionary history of this uniquely fascinating species.

20            *Mus musculus* today is one of the most widely distributed of all

mammals, with populations on all continents except Antarctica. Numerous, locally distinctive forms have been named but recent taxonomic treatments generally group these into as many as 15, or as few as 4 subspecies, based on morphological traits of the skin and skull (Schwarz and Schwarz, 1943; Marshall  
5 *et al*, 1981; Marshall, 1986). In contrast, molecular phylogenetic evidence favours a rather simpler view that divides *M. musculus* into three broadly distributed genetic groups and one or two additional groups with smaller geographic ranges (Britton and Thaler, 1978; Sage, 1981; Yonekawa *et al*, 1981, 1988; Ferris *et al*,  
1983; Bonhomme *et al*, 1984; Suzuki *et al*, 1986; Auffray *et al*, 1991; Boursot *et*  
10 *al*, 1993; Moriwaki *et al*, 1994; Prager *et al*, 1998). The principal genetic groups are here labelled: DOM (*M. m. domesticus*) from Western Europe and North Africa; MUS (*M. m. musculus*) from the northern part of Eurasia except Western Europe; CAS (*M. m. castaneus*) from Southeast Asia; BAC (*M. m. bactrianus*) from India; and GEN (*M. m. gentilulus*) known so far only from Yemen.

15           The place of origin of the ancestral *M. musculus* stock is still hotly debated. Based on allozyme datasets, several research teams have proposed that *M. musculus* emerged in central Asia or India, and dispersed both west and east, giving rise to DOM and CAS in Europe and East Asia, respectively (Boursot *et al*,  
1996; Din *et al*, 1996). Under this scenario, derived MUS and BAC types  
20 developed *in situ*, each in different areas of the Indian subcontinent. However,

MUS types later dispersed out from this region, again moving both west and east where they eventually established secondary contact with the DOM and CAS populations, respectively (Boursot *et al*, 1996; Din *et al*, 1996). An alternative view, derived from analyses of mitochondrial and some nuclear gene sequences, 5 postulates a Middle Eastern origin of *M. musculus*, with subsequent dispersal of DOM, MUS, CAS and GEN types to western Europe, northern Eurasia, India and the Arabian Peninsula, respectively (note that sequence data generally fail to identify a separate BAC cluster).

The zone of secondary contact between MUS and DOM lineages in 10 western Europe has attracted considerable interest, with detailed studies of chromosomes, allozymes, gene sequences, field ecology and reproductive behaviour (eg Boursot *et al*, 1993). In contrast, the distribution of MUS and CAS lineages in East Asia is only partially documented and there have been few studies of the consequences of secondary contact (Moriwaki *et al*, 1994). One notable 15 exception is provided by the so-called ‘native’ Japanese population of *M. musculus*. On morphological criteria, this population was long treated as a separate subspecies, *M. m. molossinus*. However, molecular phylogenetic studies using mitochondrial markers found no distinct evolutionary components in these populations at all, but rather a mix of component derived from two ‘subspecies’ lineages—MUS from 20 Northern China and CAS from Southeast Asia (Yonekawa *et al*, 1988, 2003).

Initially, the geographic distribution of these components posed something of an enigma because the CAS type, usually associated with southern Asia, was restricted in Japan to Northeast Honshu (Tohoku district) and Hokkaido, both in the northern part of the island chain (Yonekawa *et al*, 1988), while the MUS type, otherwise found in northern Eurasia, was dominant in southern regions of Japan. To account for this unusual spatial distribution, Yonekawa *et al* (1988, 2003) proposed a hypothesis involving two phases of dispersal, followed by hybridization. Under this scenario, the Japanese islands were first colonized by mice of CAS type, perhaps via a southern route, with establishment of CAS populations on all islands. Subsequently, MUS type mice arrived, probably via the Korean peninsula, leading to complete replacement of the CAS mitochondrial lineages in the southern and central islands, and an apparent admixture of CAS and MUS lineages in the northern parts. Although the mitochondrial data are compelling evidence for a complex history of interaction between CAS and MUS lineages in Japan, maternal markers alone cannot answer many of the more interesting questions about how this interaction occurred. For example, did the CAS and MUS lineages hybridize with introgression of MUS haplotypes through most populations, or was there a true replacement of CAS by MUS populations? And if hybridization and introgression did occur, what can we learn from molecular sources about the pattern and process of interaction between the populations of different origin?

To shed more light on these issues, we characterized the genetic constitution of Hokkaido mice using a number of maternally, paternally and bi-parentally inherited genetic markers that might provide information as to sources of genetic diversity. First, we examined the mitochondrial cytochrome *b* gene (*cyt b*: 1140 bp) to allow our specimens to be related to the previously defined subspecies lineages. The *cyt b* data also provide a means of estimating the time of divergence of the main mitochondrial lineages. We then analyzed sequences of the *Sry* gene, which is located on the Y chromosome. Intraspecies variation in *Sry* also has been used previously for subspecies-group recognition in *M. musculus* (Gubbay *et al*, 1992; Nagamine *et al*, 1994; Tucker *et al*, 1992; Lundrigan and Tucker, 1994; Albrecht and Eicher, 1997). Because *cyt b* and *Sry* are not affected by meiotic recombination, these genes should allow us to trace the history of maternal and paternal lineages, respectively, and to identify any bias in the involvement of males and females in 'hybrid' coupling. In addition to these uniparentally-inherited gene markers, we also examined restriction site variation in the biparentally-inherited nuclear ribosomal RNA gene (rDNA) spacer (Suzuki *et al*, 1986, 1997; Iwasa and Suzuki, 2003). The rDNA gene is tandemly repeated, with several hundreds copies per cell, and evolves under high homogenization pressure. Accordingly, blotting patterns generated for this marker are likely to provide reliable phylogenetic evidence, being resistant to degradation of phylogenetic signal, even after genetic

hybridization. Suzuki *et al* (1990) found clusters of more than 10 rDNA loci in a previous study of rDNA in Asian mice; the observed variation also coincided well with independently assessed *M. musculus* subspecies groups (Suzuki *et al*, 1986).

Our results support the notion that mice in Hokkaido and north Honshu have  
5 experienced genetic hybridization between MUS and CAS types; however, different spatial patterns are observed for each of the maternal, paternal, and biparental markers, suggesting a complex history of interaction with different outcomes in each area.

## Materials and Methods

### *Materials*

We studied DNA from a total of 66 mice from 36 localities (Table 1, Figure 1). Twenty-six mice came from Hokkaido, 17 from Northeast Honshu (Tohoku district), and 14 from other parts of Japan. The mice from Tohoku previously were analysed for their mitochondrial D-loop and partial *cyt b* (264 bp) sequences (Furusawa 2000); we produced complete *cyt b* sequence from five these individuals. We also studied DNA of seven mice from five localities outside Japan: Indonesia, Korea, Nepal, Russia, and Taiwan. The following laboratory strains were obtained from the National Institute of Genetics, Mishima, Japan: SWN/Ms and CAS-Bog, originated from Sweon (Korea) and Bogor (Indonesia), respectively. Total DNA was extracted from tissues by the conventional phenol-chloroform method.

[Table 1, Figure 1]

### *Cytochrome b sequence analysis*

The polymerase chain reaction and direct sequencing of the *cyt b* gene were performed according to previously described methods (Suzuki *et al.*, 2004). The double-stranded PCR product was sequenced utilizing the PRISM Ready Reaction DyeDeoxy Terminator Cycle Sequencing Kit (ABI) and an ABI310 automated sequencer. The nucleotide sequences reported in this paper appear in the DDBJ, EMBL, and GenBank nucleotide sequence databases under the following accession numbers AB205273-AB205322.

Cyt *b* gene sequences were obtained from databases for *M. m. castaneus* (originated from Bangladesh), *M. m. molossinus* (strain MOA; originated from Aichi Prefecture, central Honshu, Japan), *M. caroli*, *M. spicilegus*, and *M. spretus* (Suzuki *et al*, 2004) and *M. m. domesticus* (strains NZB and MilP; Loveland *et al*, 1990).

#### *Sry sequence analysis*

We amplified and determined sequences of the *Sry* gene in the downstream region of the 5' end of the MHG-box, using primer sets of Sry-8653 and Sry-9475 (Albrecht and Eicher, 1997; positions numbered according to the mouse reference sequence X67204, Gubbay *et al*, 1992). The reactions were carried out for 35 cycles, each consisting of 30 sec at 94°C for denaturation, 30 sec at 59°C for annealing, and 90 sec at 72°C for extension. These reaction mixtures (20 µl) contained 1.5 mM MgCl<sub>2</sub>. Sequencing of the PCR products was performed as described above.

*Sry* gene sequences were obtained from databases for two inbred strains: B6JEl-YPOS (Y derived from *M. m. domesticus*) and CAST/Ei (Y derived from *M. m. castaneus*) (Albrecht and Eicher, 1997; Gubbay *et al*, 1992). The sequences for *M. spicilegus* and *M. spretus* (Albrecht and Eicher, 1997) were used as outgroup.

*Southern blot analysis for nuclear ribosomal RNA gene  
spacers*

We used a probe of 0.7-kb mouse rDNA fragment that contained the 3' end of the gene for 28S rRNA (Suzuki *et al*, 1986; Iwasa and Suzuki, 2003). The probe was prepared from an *Eco*RI-6.6-kb rDNA fragment, gel purified and digoxigenin-labeled (DIG labeling and detection kit, Boehringer Mannheim). Strand genomic DNA were digested with *Eco*RI restriction enzyme and electrophoresed through 0.7% agarose gels at 3 cm/V for 10-16 h in TAE buffer (40 mM Tris-acetate, 1 mM EDTA, pH8.0). Capillary transfer of digested DNA to nylon filter (Hybond-N; Amersham) was performed by standard method. Immunodetection and visualization with the colorimetric substrates NBT/X-phosphate were performed according to manufacturer's instructions.

*Phylogenetic data analysis*

We constructed a phylogenetic tree by the neighbor-joining (NJ) method (Saitou and Nei, 1987) using genetic distances ( $d$ ) computed by Kimura's two-parameter method (Kimura, 1980), and performed bootstrap analysis with 1000 replications. The robustness of the resulting phylogeny was also assessed by bootstrap analysis (100 replications) using a maximum parsimony method. All computations were performed using PAUP 4.0b10 (Swofford, 2001).

## Results

### *Cyt b sequences*

We analysed complete *cyt b* haplotypes for 51 individuals of *M. musculus* and a shorter fragment (264 bp) for a further 15 individuals, the combined samples drawn from 36 localities (Table 1). We constructed a NJ tree for the 1140-bp sequences with *M. spretus* and *M. spicilegus* as outgroups (Figure 2). Three distinct clades are seen, representing the three subspecies groups of *M. m. castaneus* (CAS), *M. m. domesticus* (DOM), and *M. m. musculus* (MUS). One specimens from Nepal possessed a distinct haplotype, possibly representing the enigmatic *M. m. bactrianus* (Yonekawa *et al*, 1981; Moriwaki *et al*, 1984). The geographic distribution of these haplotypes is shown in Figure 1.

[Figure 2]

Five distinct haplotypes are represented in the 26 mice from Hokkaido (Table 1). These haplotypes include examples of both the MUS group (two haplotypes, 17 mice) and the CAS group (three haplotypes, nine mice). The distribution of the two haplotype groups on Hokkaido is mutually exclusive: CAS group haplotypes occur throughout the northern part of the island (localities 7-14, Figure 1), while MUS group haplotypes occur in the southern region (localities 15-19). No locality produced both MUS and CAS group haplotypes. Among the 17 individuals with haplotypes of the CAS group from Hokkaido, 15 individuals shared the same

haplotype; the remaining two each had unique haplotypes which differed from the common haplotype by one and three bases (Otaru-1 and Kushiro-1, respectively). The geographic areas that support the CAS and MUS mtDNA populations are separated to some extent by the presence of an interposed mountainous region.

The 17 mice from Tohoku district in northern Honshu also possessed a mixture of MUS and CAS haplotype groups, with 13 MUS group and four CAS group (Table 1). The geographic distribution of the two groups is interesting: as on Hokkaido, no locality produced both groups but the spatial pattern is more complex. CAS group haplotypes seem to be confined to the eastern side of the island where the MUS group is also present but uncommon (only recorded at Towa). Only MUS group haplotypes were found in the western and central regions of Honshu. The latter situation is consistent with other regions area of Japan where all studied populations possess MUS group haplotypes (Yonekawa *et al*, 1988).

All of the Japanese CAS group haplotypes belong to one major clade, here designated as CAS1 subgroup (Figure 1). This clade also contains the CAS-Bog strain originating from Bogor, Java (differing from the common Japanese type by two substitutions). One haplotype from Hokkaido (Kushiro-1) clusters with CAS-Bog but the two sequences differ by three base substitutions. A second major clade, designated CAS2 subgroup, contains a single haplotype from a Taiwanese mouse (Taitong-1). CAS1 and CAS2 sub-groups are quite divergent, with a total of 17 substitutions

(maximum genetic distance  $d = 0.016$ ). The association of the Japanese and Indonesian haplotypes in CAS1 rather than with the Taiwanese haplotype of CAS2, is consistent with a notion that Japanese CAS group mice originated from somewhere in Southeast Asia rather than Taiwan or southern China; a comparable result was obtained from analysis of the D-loop sequences by Yonekawa *et al* (2003). An interesting detail is that the two Tohoku CAS group haplotypes represented by complete *cyt b* sequence (Otsuchi-1 and Sendai-1) are identical but differ by one substitution from the common CAS group haplotype on Hokkaido.

The *cyt b* haplotypes from the MUS clade were less variable (genetic distance,  $d = \text{maximum } 0.005$ ) and no geographic structure was found. The SWN laboratory strain, originating from Sweon in Korea, is almost identical in *cyt b* sequence to the MOA strain (originally from central Honshu) and to the majority of our sequences from Honshu and Hokkaido. Interestingly, a MUS group haplotype was obtained from one individual from Okinawa Island; on the phylogenetic tree this haplotype is shown as the sister lineage to all other MUS haplotypes, but with a short common branch uniting members of the widespread clade.

A surprising result was obtained for newly collected samples from Bogor, West Java, Indonesia that were identified on external and cranial morphology as *M. m. castaneus*. These were found to have typical European DOM group haplotypes (Table 1, Figure 2). This finding contrasts with the CAS affinity of the laboratory strain that originated from Bogor (CAS-Bog)

and raises the possibility of some recent admixture of DOM and CAS types in Java.

### *Sry sequences*

The mouse *Sry* gene is known to show intraspecific variation in the downstream region from the 3' end of the HMG box (Figure 3). Boissinot and Boursot (1997) discovered only two major haplotypes for *Sry* in the house mouse; one in DOM type mice and the other in both MUS and CAS type mice. The CAS + MUS *Sry* haplotype is distinguished from the DOM haplotype by substitutions at positions 8701, 8731 and 9019 (Lundrigan and Tucker, 1994; Albrecht and Eicher, 1997; positions as in Gubbay *et al*, 1992). In addition, substitutions occurring at position 8711 are specific to 'molossinus' type mice, with the C or T substitution at position 8711 associated with the presence or absence of *TaqI* site (Gubbay *et al*, 1992; Nagamine *et al*, 1994; Tucker *et al*, 1992; Lundrigan and Tucker, 1994). Nagamine *et al* (1994) revealed through their extensive geographic survey that the latter is confined to 'molossinus' mice from Japan and Korea.

[Figure 3]

For this study, we determined the *Sry* gene sequence (ca. 800 bp, Figure 3) for 33 individuals of *M. musculus* (Table 1). The *Sry* gene fragment showed highly variable sites with numerous triplet repeats (eg (CAG)<sub>n</sub>) in some regions. The *Sry* gene region spanning positions 8709-8777 was more stable but showed informative substitutions at positions 8711 (C/T), 8721

(A/G), 8731 (C/T), and 8775 (C/T) (Figure 3). The *Sry* sequences from our study, combined with those already reported, suggest that we can distinguish five haplotype groups. These are geographically restricted, as follows: A (western Europe), B (Nepal), C (Indonesia), D (Taiwan/Russia) and E (Korea/Japan) (Figure 3). Group E corresponds with the ‘*molossinus*’ type reported by previous authors, with nucleotide T at position 8711.

In contrast to the strong geographic patterning found in the *cyt b* haplotypes, we found that the *Sry* gene sequences for the mice from Japan, including both Hokkaido and Tohoku, are monotypic: all belong to group E. Outside of Japan, this haplotype is found only in Korea (Table 1). A male mouse from Bogor had a unique *Sry* haplotype that differs from that of a DOM-derived strain (B6JEI-YPOS) in one substitution (position 8775). This individual also had a DOM group haplotype for *cyt b*. The same substitution is also present in the *Sry* sequence of an individual from Nepal (Kathmandu-1); however, this sequence also includes one additional substitution, at position 8721 (Figure 3). Russian (Kraskino-1) and Taiwanese (Taitong-1) individuals display *Sry* haplotype D, previously reported from *M. m. castaneus*, and represented in our dataset by inbred strain CAST/Ei (Figure 3).

#### *rDNA-RFLP*

Each rDNA-repeating unit is composed of a coding region and a nontranscribed spacer (NTS). The NTS is known to have a high rate of

nucleotide substitutions that makes it suitable for examining intraspecific variation (eg Suzuki *et al*, 1986, 1997). We examined restriction-site variation of NTS in 31 individuals from Hokkaido, Tohoku district, Honshu, and other localities, using *EcoRI* restriction enzyme and the mouse 28S rDNA probe. Suzuki *et al* (1986) demonstrated that the *EcoRI* polymorphic sites downstream of the 5' end of the 28S gene are specific to each population, as follows: DOM (6.0 kb only), MUS (9.0 kb only) and CAS/BAC (variable combination of 9.0 kb, 7.5 kb, 7 kb, 6.5 kb, etc). The restriction patterns in mice from Hokkaido and Honshu are reported to share a 7.5-kb band but with an additional 8.8-kb band as a minor component only in Honshu (Suzuki *et al*, 1986).

Eight individuals of *M. musculus* from four localities in Hokkaido showed the MUS type restriction patterns. Four of these individuals came from the northern area and thus possess mitochondrial CAS haplotypes, while four came from southern Hokkaido where MUS mitochondrial haplotypes occur (Table 1). Twelve individuals from eight localities on Hokkaido showed what appeared to be mixed MUS/CAS type restriction patterns, with a minor 7.5-kb as well as the major 9-kb band. These localities are also distributed both north and south of the boundary between MUS and CAS mitochondrial types.

Populations of *M. musculus* on Honshu display a similar complex admixture of MUS and MUS/CAS restriction patterns (Table 1). Individuals with a minor 7.5-kb band were found throughout the northern part of Honshu,

including localities where the mitochondrial *cyt b* haplotypes are exclusively of the MUS group (eg Sakata, Sakekawa, Tsuruoka). However, localities further south in central Honshu, most notably the well sampled sites of Chiba and Ishioka, appear to lack the CAS contribution to the restriction pattern. Outside of Japan, the 7.5-kb CAS band was detected in a mouse from Taiwan (Taitong-1), while a MUS pattern (9.0 kb only) was found in mice from Kraskino in Russia and Peklyong Island off the west coast of Korea. A faint band of 8.8-kb was exclusive to mice from Japan and Korea. This latter finding confirms the previous report of Suzuki *et al* (1986) and is also congruent with the geographic patterning of *Sry* haplotypes, wherein the Japanese and Korean samples possess the unique synapomorphic substitution from C to T at position 8711.

## **Discussion**

Our results confirm previous reports that CAS mtDNA elements, diagnostic of Southeast Asian mice, are present in the northern part of Japan, Hokkaido and Tohoku (Yonekawa *et al*, 1988, 2003; Moriwaki *et al*, 1994). However, while previous studies found only CAS types in these areas, our larger data set clearly shows that MUS mtDNA elements are also present in both regions. Interestingly, in the case of Hokkaido mice geographic separation between the two groups, with CAS group haplotypes restricted to northern localities, and MUS types in the southern localities. In contrast, the Tohoku district of northern Honshu shows a somewhat more complex

pattern: MUS group haplotypes are present throughout the region, while CAS types are restricted to the eastern part of Tohoku. Although no single locality produced mice with both haplotype groups, sample sizes in the eastern area are small and true mixed populations may yet be found.

The paternally-inherited *Sry* and biparentally inherited rDNA-RFLP datasets each show different patterns to the mtDNA. The *Sry* gene is monotypic for a MUS group haplotype (E in Figure 3) throughout Hokkaido and Tohoku, while rDNA-RFLP indicates an admixture of pure MUS types and mixed MUS/CAS types in both regions. The latter result contrasts with the situation further south on Honshu, where previous survey of rDNA-RFLP revealed MUS types exclusively. Our data thus support the notion that mice from Hokkaido and Tohoku are of mixed CAS/MUS origin. However, they indicate either a more complex genetic history involving distinct, area-specific demographic factors or a quite different immigration history to the current scenario.

#### *The dual-origin of house mice in northern Japan*

The presence of CAS mtDNA in the northern third of Japan has been interpreted as a relictual feature within the context of the hybrid-origin hypothesis (Yonekawa *et al*, 1988, 2003; Moriwaki *et al*, 1994). Under this hypothesis, the first mice to colonize Japan came from Southeast Asia, carrying CAS mtDNA types; these CAS mice spread throughout the Japanese islands. Subsequently, a second wave of immigration occurred,

this time consisting of mice with MUS mtDNA types, presumably coming from China. The MUS mtDNA spread throughout the southern and central regions of Japan, completely replacing the original CAS mtDNA in most areas but leaving a remnant pocket of CAS mtDNA in Hokkaido.

Our mtDNA data are broadly congruent with this historical scenario, although we have identified some new distributional features, namely the presence of MUS mtDNA in southern Hokkaido, and a pocket of CAS mtDNA in northeastern Honshu (Tohoku district). In addition, a dual-origin historical scenario is clearly supported by the rDNA-RFLP data that show the presence of the 7.5-kb band of rDNA, a marker for the CAS population, in mice from northern Honshu and Hokkaido. This marker is not present in mice from further south in Japan (Suzuki *et al*, 1986). The ubiquitous occurrence of a diagnostic MUS haplotype of the *Sry* gene is less obviously consistent with a dual-origin hypothesis.

A dual-origin hypothesis for Japanese *M. musculus* suggests a possible parallel history with that of human populations in East Asia, including Japan (Tajima *et al*, 2004; Tanaka *et al*, 2004). As demonstrated by Tajima *et al* (2002), a total of six Y-chromosome haplotype groups are represented among Asian peoples. Three groups are dominant, representing north Asian (ht7 of Tajima *et al*, 2002), Han Chinese/southeast Asian (ht4) and exclusively Japanese (ht1) populations, respectively. Estimates of coalescence times for the haplotype groups range from 53,000 to 95,000 years, during the early period of dispersal of modern humans (ie *Homo*

*sapiens*) (Tajima *et al*, 2002). Japanese people display all three of the dominant Y chromosome types but with variable geographic representation. Among indigenous Ainu populations from Hokkaido, ht1 haplotypes are dominant and ht7 haplotypes as a minor component. In contrast, populations from Honshu and Kyushu have ht4 haplotypes dominant, with ht1 and ht7 as lesser components. Further south, indigenous populations from Okinawa show all three haplotype groups, but with ht1 dominant.

The genetic evidence for a dual origin of Japanese people is also consistent with archaeological scenarios for the colonization of Japan. These scenarios postulate an early immigration by Neolithic peoples of the Jomon culture, possibly around 12,000 years ago (Tanaka *et al*, 2004), followed by a more recent wave of immigration about 2,300 years ago (Kitagawa, 2000). The Ainu and Okinawan indigenous populations are thought to be descendants of the earlier Jomon peoples, with populations on Honshu and Kyushu created by admixture of the earlier and later peoples.

The combined genetic and archaeological evidence for two episodes of human migration to Japan, and most likely from different source areas, provides an obvious context for reconstruction of the migration history of *M. musculus*. However, any such reconstruction must deal with one intriguing observation—the fact that no remains of *Mus* have been found in a fossil or subfossil context in Japan (Kawamura, 1989). This issue is taken up again below.

*Possible source areas for CAS and MUS founder populations*

Yonekawa *et al* (2003) suggested from their study of the D-loop sequences that Japanese mtDNA haplotypes are more closely related to haplotypes from Southeast Asia rather than southern China including Taiwan. Our *cyt b* results appear to support this hypothesis: the CAS-Bog laboratory strain is very similar to the Japanese haplotypes, and these together are quite distinct from our Taiwanese sample. However, it must be cautioned that the Indonesian population itself probably represents a quite recent introduction from some other region.

Two lines of evidence point to a special relationship between the MUS populations of Japan and Korea. The first comes from the rDNA-RFLP dataset: a minor band of 8.8 kb is only recovered from MUS types in Korea and Honshu, implying a specific phylogenetic link between these populations. In addition, Japanese and Korean mice share the same derived haplotype of the *Sry* gene (type E). However, type E is also present in the authentic inbred strains (eg BALB/c, C57B6), in which the Y chromosome is identified only as being of 'Asian' origin (Nagamine *et al*, 1994), thereby raising the possibility that *Sry* type E might be found in other areas.

More intensive geographic sampling is obviously needed before the source area of either component is identified with any confidence. A study currently underway using nuclear gene markers is expected to help resolve this issue.

*Who arrived first—CAS or MUS?*

As mentioned above, the currently favoured hypothesis for the origin of Japanese *M. musculus* suggests an initial colonization by CAS type mice. MUS types are seen as a later arrival, leading to widespread replacement of the original CAS types except in the refugial area of northern Japan. However, two alternative scenarios need to be considered: 1) that MUS types arrived first and spread through the entire island chain, followed by a later invasion of CAS types into northern Japan, with local replacement of MUS types; and 2) MUS types and CAS types arrived around the same time, from the south and north, respectively, with establishment of several contact zones in Hokkaido and northeast Honshu. Each of these scenarios sheds a very different light on the genetic history of *M. musculus* in Japan.

The ‘CAS first’ scenario is in good agreement with the reconstructed history of human populations in Japan. However, as noted above, there currently is no evidence to suggest that *M. musculus* arrived with the earliest human migrants. Under this scenario, we need to pay special attention to two aspects of the genetic composition of Japanese mice. The first is the relatively sharp geographic separation of the mtDNA haplotypes in both Hokkaido and northeastern Honshu. Essentially, this region of northern Japan contains two ‘enclaves’ of CAS mtDNA, within a more general distribution of MUS types. The second is the absence of any indication of CAS contributions in the rDNA-RFLP profiles from anywhere in Japan outside of Hokkaido and

Tohoku district of Honshu. In particular, this observation needs to be reconciled with the evidence for extensive mixing of CAS and MUS rDNA-RFLP elements throughout northern Hokkaido, including areas where only CAS mtDNA is found.

One possibility is that the observed genetic structure is the result of genetic drift, leading to a geographic subdivision of the mtDNA types of CAS and MUS populations in different areas. On Hokkaido, the northern (CAS) and southern (MUS) populations are partially isolated by a substantial mountainous region. However, in northeastern Tohoku district where the CAS mtDNA type is present, there is no obvious barrier between the CAS and MUS populations. If subspecies admixture between CAS and MUS populations occurred independently in each of Hokkaido and Tohoku through random drift, we might expect the rRNA gene also to show some differences between the two areas. However, this is not the case: the rDNA-RFLP profiles of Hokkaido and the Tohoku mice are extremely similar, including the presence of the faint 7.5-kb band. The ribosomal RNA genes are known to be present on around ten different chromosomes in Asian mice (Suzuki *et al*, 1990), hence it is unlikely that such similar patterns would arise under a model of random drift. A more likely explanation of this similarity is that the Hokkaido and Tohoku populations are historically linked, perhaps by a dispersal event within the last few hundred years.

The 'MUS first' scenario postulates an initial introduction of *M. musculus* with mtDNA of MUS type. Presumably, this population would

also have possessed an *Sry* gene of MUS type and a rDNA-RFLP profile consisting of the single 9.0 kb band. Mice with such a genetic profile are indeed widespread in Kyushu, and in southern and central Honshu. Subsequently, under this scenario, mice of CAS type arrived in northern Japan. If they entered a region already occupied by MUS type genes, the currently observed genetic composition of Hokkaido and Tohoku mice would require a subsequent replacement in this area of MUS by CAS mtDNA types, but with a conservation of the MUS type of *Sry* gene, and an admixture of rDNA. This might imply either a strong selective mating of males of MUS type with females of CAS type, or a strong bias in the fitness of offspring with CAS mtDNA. However, irrespective of such mating or fitness biases, more effective introgression of bi-parentally inherited markers is to be expected. Not surprisingly then, the rDNA of CAS and MUS lineages appear to be thoroughly mixed throughout the northern populations. This contrasts markedly with the absence of rDNA of CAS type in populations of *M. musculus* in central and southern Honshu where mtDNA types are exclusively MUS type.

The third scenario postulates that two groups of *M. musculus* colonized Japan around the same time, but coming from different source areas and arriving at different locations—MUS mtDNA types entering in the south, and CAS types in the north. Under this scenario, the contact zones between the two mtDNA types in each of northeast Honshu and Hokkaido might represent primary contact zones. Three features of the

genetic composition of northern Japanese *M. musculus* would then require explanation, specifically the subsequent admixture of rDNA types, the maintenance of discrete mtDNA populations, and the replacement of CAS by MUS types of the *Sry* gene throughout the northern part of Japan.

As noted above, effective introgression of rDNA types across a contact zone is expected given the ease of transfer of biparental markers. Provided some effective crossing occurs, rDNA components will rapidly become mixed along the immediate hybrid zone, accompanied by gene flow and introgression from there into each of the primary populations. This is precisely the situation observed in northern Japan, where CAS and MUS rDNA types are mixed over a broad area, extending throughout Hokkaido and penetrating south into central Honshu. Maintenance of the contact zone between CAS and MUS mtDNA is also readily explained through the inherent stability of such zones in the absence of any strong selective pressure for one of the two haplotype groups. This is due to the constant rarity of the invasive haplotypes in areas dominated by resident haplotypes, probably because of female philopatry and presence of some geographic barriers; in Hokkaido, there is a chain of mountains mountainous areas that demarcates the northern and southern groups of mtDNA. Differential dispersal by gender can further affect the relative magnitude of phylogeographical structure in biparentally and uniparentally inherited markers (Hare, 2001; Wen *et al*, 2004).

Complete replacement throughout northern Japan of the CAS type

of *Sry* by MUS types is more difficult to explain. One point to make at the outset is that we cannot be certain that the postulated founder population of CAS mtDNA did in fact possess the CAS type for the *Sry* gene—it is possible that transfer of the MUS type *Sry* gene had occurred in a source area where both MUS and CAS lineages were present. However, assuming for the present that rDNA of CAS type was originally present in northern Japanese populations, we would need to find a mechanism to explain strong selection for transmission of MUS type Y chromosomes rather than CAS types. One possibility is that the replacement occurred as a consequence of random drift, as postulated earlier for the replacement of CAS by MUS mtDNA haplotypes under the ‘CAS first’ scenario. However, other possibilities are worthy of mention, including more effective long distance dispersal of male mice across hybrid zone (Hare, 2001; Wen *et al*, 2004) and possibility of differential production of abnormal sperm types in inter-subspecies hybrids involving males of CAS vs MUS Y chromosome type (Oka *et al*, 2004).

In fact, the three different markers, maternal *cyt b*, paternal *Sry*, and biparental nuclear rDNA, showed gene-specific spatial patterns in dormice (Suzuki *et al*, 1997) and voles (Iwasa and Suzuki, 2003). It might be helpful to use different gene markers to assess true status of population genetic structure. We need more markers, however, when we deal some organisms that have complicate evolutionary history.

## Acknowledgements

We wish to express our appreciation to M. T. Kimura, N. Takagi, M. A. Iwasa and T. Shiroishi for their valuable advice in this study. We are most grateful to K. Aplin for his helpful discussions and comments. We also thank N. Aragaki, S-H. Han, T. Jogahara, A. P. Kryukov, I. Munechika, B. Sakumoto, K. Sasaki, M. H. Sinaga, and S. Suzuki for cooperation in collecting the animals. This study was conducted as part of the Core University Program between Hokkaido University and the Research Centre for Biology, at LIPI (the Indonesian Institute of Sciences) under the title 'Environmental Conservation and Land Use Management of Wetland Ecosystems in Southeast Asia', which is supported by the JSPS (Japan Society for the Promotion of Science).

## Reference

- Albrecht KH, Eicher EM (1997). DNA sequence analysis of *Sry* alleles (subgenus *Mus*) implicates misregulation as the cause of C57BL/6J-Y<sup>POS</sup> sex reversal and defines the *Sry* functional unit. *Genetics* **147**: 1267-1277.
- Auffray J-C, Marshall JT, Thaler L, Bonhomme F (1991). Focus on the nomenclature of European species of *Mus*. *Mouse Genome* **88**: 7-8.
- Avise JC (2000). *Phylogeography: The History and Formation of Species*. Harvard University Press: Cambridge.
- Boissinot S, Boursot P (1997). Discordant phylogeographic patterns between the Y chromosome and mitochondrial DNA in the house mouse - selection on the Y chromosome? *Genetics* **146**: 1019-1034.
- Bonhomme F, Catalan J, Britton-Davidian J, Chapman VM, Moriwaki K, Nevo E, Thaler L (1984). Biochemical diversity and evolution in the genus *Mus*. *Biochem Genet* **22**: 275-303.
- Boursot P, Auffray JC, Britton-Davidian J, Bonhomme F (1993). The evolution of house mice. *Ann Rev Ecol System* **24**: 119-152.
- Boursot P, Din W, Anand R, Darviche D, Dod B, Von Deimling F, Talwar GP, Bonhomme F (1996). Origin and radiation of the house mouse: mitochondrial DNA phylogeny. *J Evol Biol* **9**: 391-415.
- Britton J, Thaler L (1978). Evidence for the presence of two sympatric species of mice (genus *Mus*) in southern France based on biochemical genetics. *Biochem Genet* **16**: 213-225.

- Din W, Anand R, Boursot P, Darviche D, Dod B, Jouvin-Marche E, Orth A, Talwer GP, Cazenave P-A, Bonhomme F (1996). Origin and radiation of the house mouse: clues from nuclear genes. *J Evol Biol* **9**: 519-539.
- Ferris SD, Sage RD, Huang CM, Nielsen JT, Ritte U, Wilson AC (1983). Mitochondrial DNA evolution in mice. *Genetics* **105**: 681-721.
- Furusawa S (2000). *Population structure of the house mouse from northern Honshu, Japan inferred from maternally and paternally inherited gene marker*. The master's thesis of the Yamagata University (in Japanese).
- Gubbay J, Vivian N, Economou A, Jackson D, Goodfellow P, Lovell-Badge R (1992). Inverted repeat structure of the *Sry* locus in mice. *Proc Natl Acad Sci USA* **89**: 7953-7957.
- Hare MP (2001). Prospects for nuclear gene phylogeography. *Trends Ecol Evol* **16**: 700-706.
- Iwasa MA, Suzuki H (2003). Intra- and interspecific genetic complexities of two *Eothenomys* species in Honshu, Japan. *Zool Sci* **20**: 1305-1313.
- Kawamura Y (1989). Quaternary rodent faunas in the Japanese islands (Part 2). Mem Fac Sci, Kyoto Univ, Ser Geol Mineral LIV: 1-235.
- Kimura M (1980). A simple method for estimating evolutionary rate of base substitution through comparative studies of nucleotide sequences. *J Mol Evol* **16**: 111-120.
- Kitagawa Y (2000). Nonmetric morphological characters of deciduous teeth in Japan: Dachronic evidence of the past 4000 years. *Int J Osteoarc*

10; 242-253.

Loveland B, Wang CR, Yonekawa H, Hermel E, Lindahl KF (1990).

Maternally transmitted histocompatibility antigen of mice: a hydrophobic peptide of a mitochondrially encoded protein. *Cell* **60**: 971-980.

Lundrigan BL, Tucker PK (1994). Tracing paternal ancestry in mice, using the Y-Linked, sex-determining locus, *Sry*. *Mol Biol Evol* **11**: 483-492.

Marshall JT (1981). Taxonomy. In: Foster HL, Small JD, Fox JG (eds) *The Mouse in Biomedical Research, Vol. 1*. Academic Press: New York. Pp, 17-26.

Marshall JT (1986). Systematics of the genus *Mus*. pp. 12-18. In: Potter M, Nadeau JH, Cancro MP (eds) *The Wild Mouse in Immunology*. Springer-Verlag: Berlin.

Moriwaki K, Shiroishi T, Yonekawa H (1994). *Genetics in Wild Mice. It's application to Biomedical Research*. Japan Scientific Societies Press: Tokyo.

Nagamine CM, Shiroishi T, Miyashita N, Tsuchiya K, Ikeda H, Namikawa T, Wu X-L, Jin M-L, Wang F-S, Kryukov AP, Akbarzade J, Moriwaki K (1994). Distribution of the *molossinus* allele of *Sry*, the testis-determining gene, in wild mouse. *Mol Biol Evol* **11**: 864-874.

Oka A, Mita A, Sakurai-Yamatani N, Yamamoto H, Takagi N, Takano-Shimizu T, Toshimori K, Moriwaki K, Shiroishi T (2004).

- Hybrid breakdown caused by substitution of the X chromosome between two mouse subspecies. *Genetics* **166**: 913-924.
- Prager EM, Orrego C, Sage RD (1998). Genetic variation and phylogeography of Central Asian and other house mice, including a major new mitochondrial lineage in Yemen. *Genetics* **150**: 835-861.
- Sage RD (1981). Wild mice. In: Forester HL, Small JD, Fox JG (eds) *The Mouse in Biomedical Research*. Vol.1. Academic Press: New York. Pp, 40-90.
- Saitou N, Nei M (1987). The neighbor-joining method: a new method for reconstructing phylogenetic trees. *Mol Biol Evol* **4**: 406-425.
- Schwarz E, Schwarz H (1943). The wild and commensal stocks of the house mouse, *Mus musculus* Linnaeus. *J Mammal* **24**: 59-72.
- Suzuki H, Miyashita N, Moriwaki K, Kominami R, Muramatsu M, Kanehisa T, Bonhomme F, Petras ML, Yu Z, Lu D (1986). Evolutionary implication of heterogeneity of the nontranscribed spacer region of ribosomal DNA repeating units in various subspecies of *Mus musculus*. *Mol Biol Evol* **3**: 126-137.
- Suzuki H, Kurihara Y, Kanehisa T, Moriwaki K (1990). Variation in the distribution of silver-staining nucleolar organizer regions on the chromosomes of the wild mouse, *Mus musculus*. *Mol Biol Evol* **7**: 271-282.
- Suzuki H, Minato S, Tsuchiya K, Fokin IM (1997). Phylogenetic position and geographic differentiation of the Japanese dormouse, *Glirulus*

*japonicus*, revealed by variations in rDNA, mtDNA and the *Sry* gene.  
*Zool Sci* **14**: 167-173.

Suzuki H, Shimada T, Terashima M, Tsuchiya K, Aplin K (2004). Temporal, spatial, and ecological modes of evolution of Eurasian *Mus* based on mitochondrial and nuclear gene sequences. *Mol Phylogenet Evol* **33**: 626-646.

Swofford DL (2001). PAUP\*. *Phylogenetic Analysis Using Parsimony (\*and Other Methods)*. Version 4. Sinauer Associates: Sunderland, Massachusetts.

Tajima A, Pan I-H, Fucharoen G, Fucharoen S, Matsuo M, Tokunaga K, Juji T, Hayami M, Omoto K, Horai S (2002). Three major lineages of Asian Y chromosomes: implications for the peopling of East and Southeast Asia. *Human Genet* **110**: 80-88.

Tanaka M, Cabrera VM, Gonzalez AM, Larruga JM, Takeyasu T, Fuku N, Guo LJ, Hirose R, Fujita Y, Kurata M, Shinoda K, Umetsu K, Yamada Y, Oshida Y, Sato Y, Hattori N, Mizuno Y, Arai Y, Hirose N, Ohta S, Ogawa O, Tanaka Y, Kawamori R, Shamoto-Nagai M, Maruyama W, Shimokata H, Suzuki R, Shimodaira H (2004). Mitochondrial genome variation in eastern Asia and the peopling of Japan. *Genome Res* **14**: 1832-1850.

Tucker PK, Lee BK, Lundrigan BL, Eicher EM (1992). Geographic origin of the Y chromosome in "old" inbred strains of mice. *Mammal Genome* **3**: 254-261

- Wen B, Li H, Lu D, Song X, Zhang F, He Y, Li F, Gao Y, Mao X, Zhang L, Qian J, Tan J, Jin J, Huang W, Deka R, Su B, Chakraborty R, Jin L (2004). Genetic evidence supports demic diffusion of Han culture. *Nature* **431**: 302-305.
- Yonekawa H, Moriwaki K, Gotoh O, Miyashita N, Matsushima N, Shi L-M, Cho W-S, Zhen X-L, Tagashira Y (1988). Hybrid origin of Japanese mice “*Mus musculus molossinus*”: evidence from restriction analysis of mitochondrial DNA. *Mol Biol Evol* **5**: 63-78.
- Yonekawa H, Moriwaki K, Gotoh O, Hayashi J-I, Watanabe J, Miyashita N, Petras ML, Tagashira Y (1981). Evolutionary relationships among five subspecies *Mus musculus* based on restriction enzyme cleavage patterns of mitochondrial DNA. *Genetics* **98**: 801-816.
- Yonekawa H, Tsuda K, Tsuchiya K, Yakimenko LV, Korobitsyna KV, Chelomina GN, Spiridonova LN, Frisman LV, Kryukov AP, Moriwaki K (2003). Genetic diversity, geographic distribution and evolutionary relationships of *Mus musculus* subspecies based on polymorphisms of mitochondrial DNA. In: Kryukov AP, Yakimenko LV (eds). *Problems of Evolution. Vol. V*. Dalnauka: Vladivostok. Pp, 90-108.

## Figure Legends

**Figure 1.** Collection localities and mitochondrial DNA types of house mouse *Mus musculus* from East Asia (a) with special emphasis on North Japan (b). Locality numbers are as in the Table 1. Genotyping has been done based on cytochrome *b* gene sequence variation; *Mus musculus musculus* (closed circle), *M. m. castaneus* (triangle for CAS I group, open circle for CAS II group), *M. m. domesticus* (closed square), and unknown type, 'Nepal', possibly *M. m. bactrianus* (open square).

**Figure 2.** A neighbor-joining (NJ) tree based on *cyt b* gene sequences. The tree was constructed with Kimura-2-parameter (K2P) model in consideration of all codon position. In this tree bootstrap scores obtained from NJ and maximum parsimonious methods are expressed as percentage in each node. Only values greater than 50% are indicated and dash '-' means the values lower than 50%. The codes for major clades detected in this tree are considered to have originated from the three subspecies groups of *M. m. castaneus* (Clades CAS I and CAS II), *M. m. domesticus* (DOM), and *M. m. musculus* (MUS). The sequence of an individual from Nepal exhibit discrete type, which is here designated as 'Nepal' and possibly represents that of *M. m. bactrianus*.

**Figure 3.** A diagrammatic representation of the predicted Sry proteins from a *Mus musculus musculus* (Gubbay *et al.*, 1992). Variant sites that are used

for typing are shown with representative individuals.

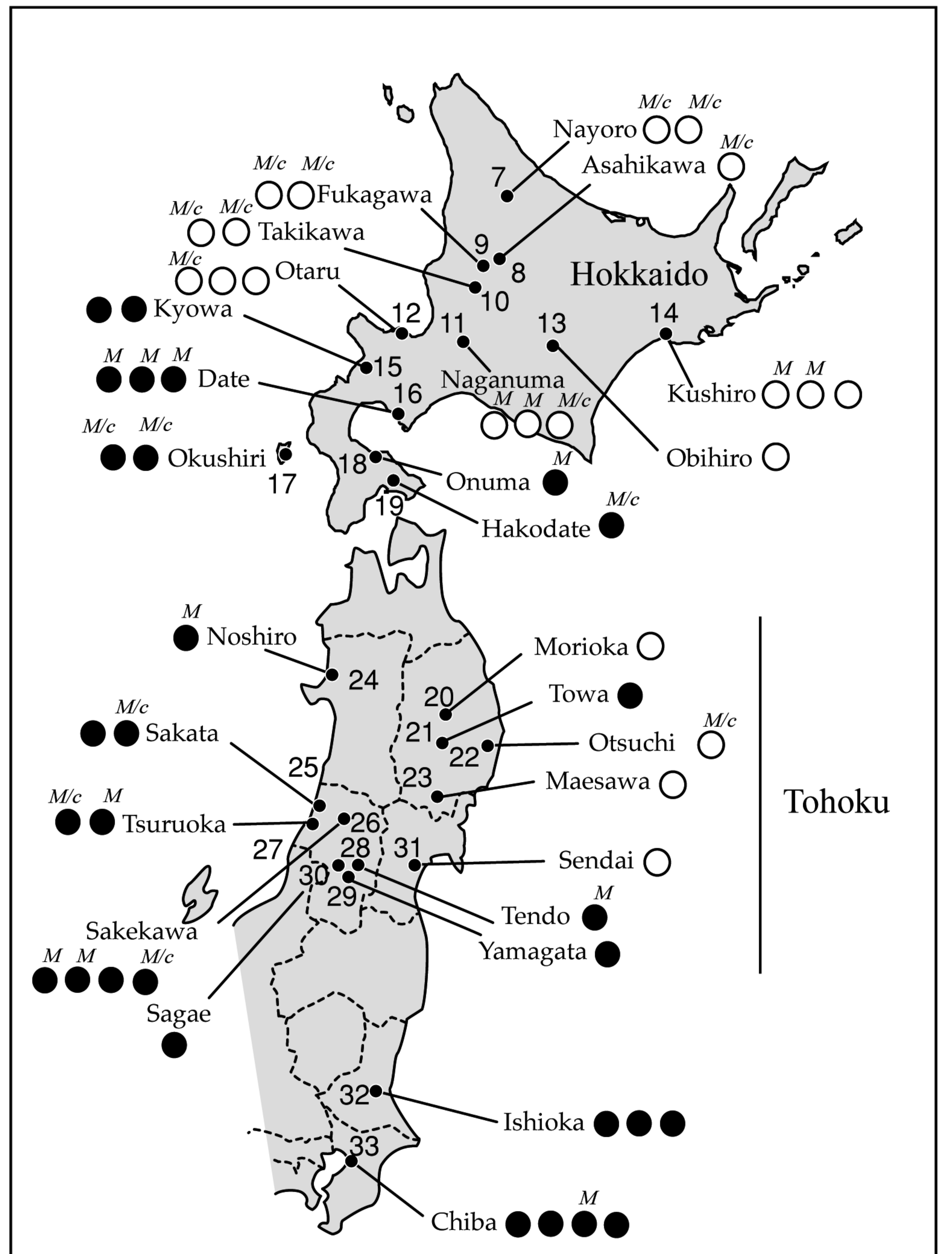
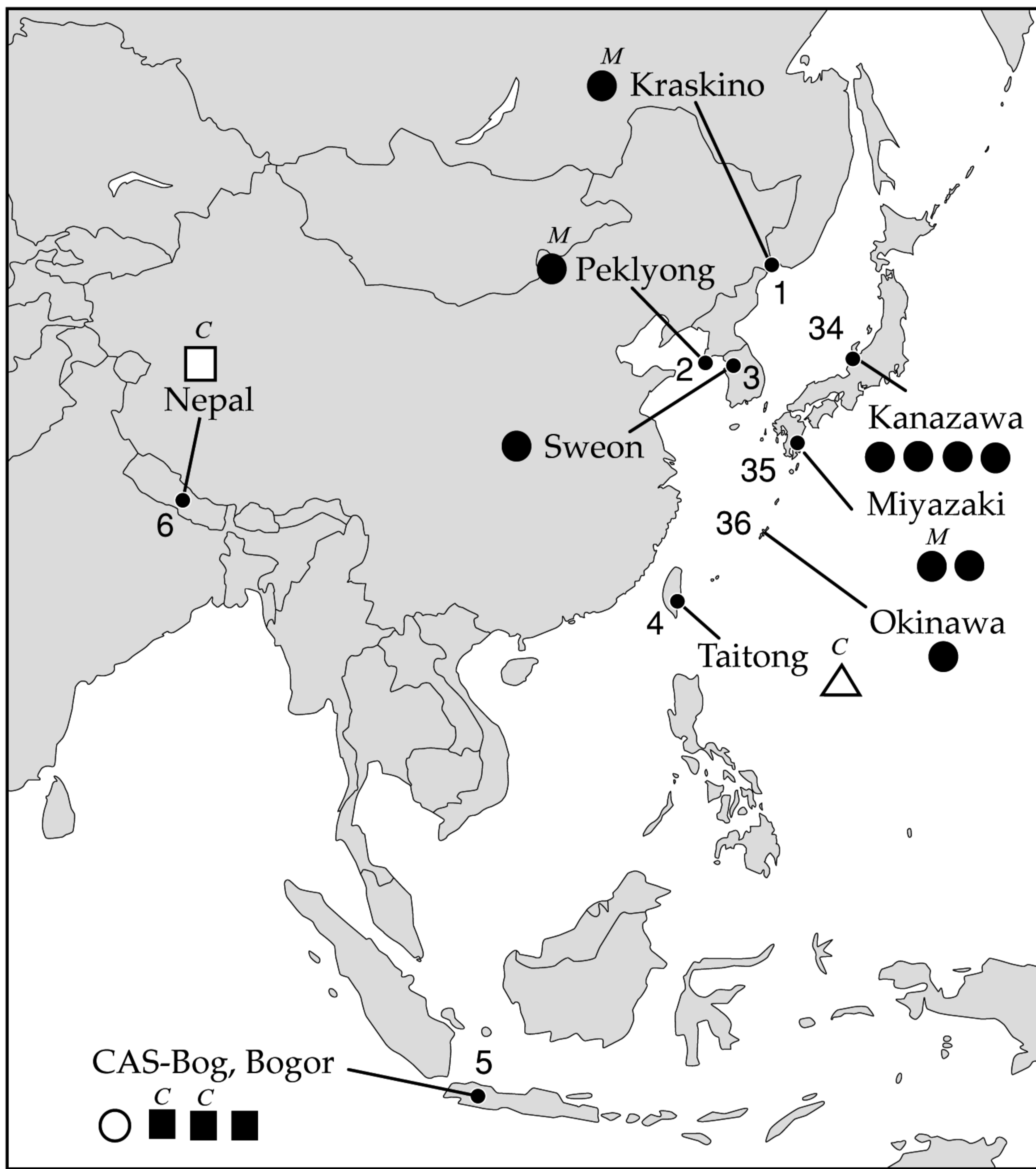
**Table 1.** List of samples examined in this study.

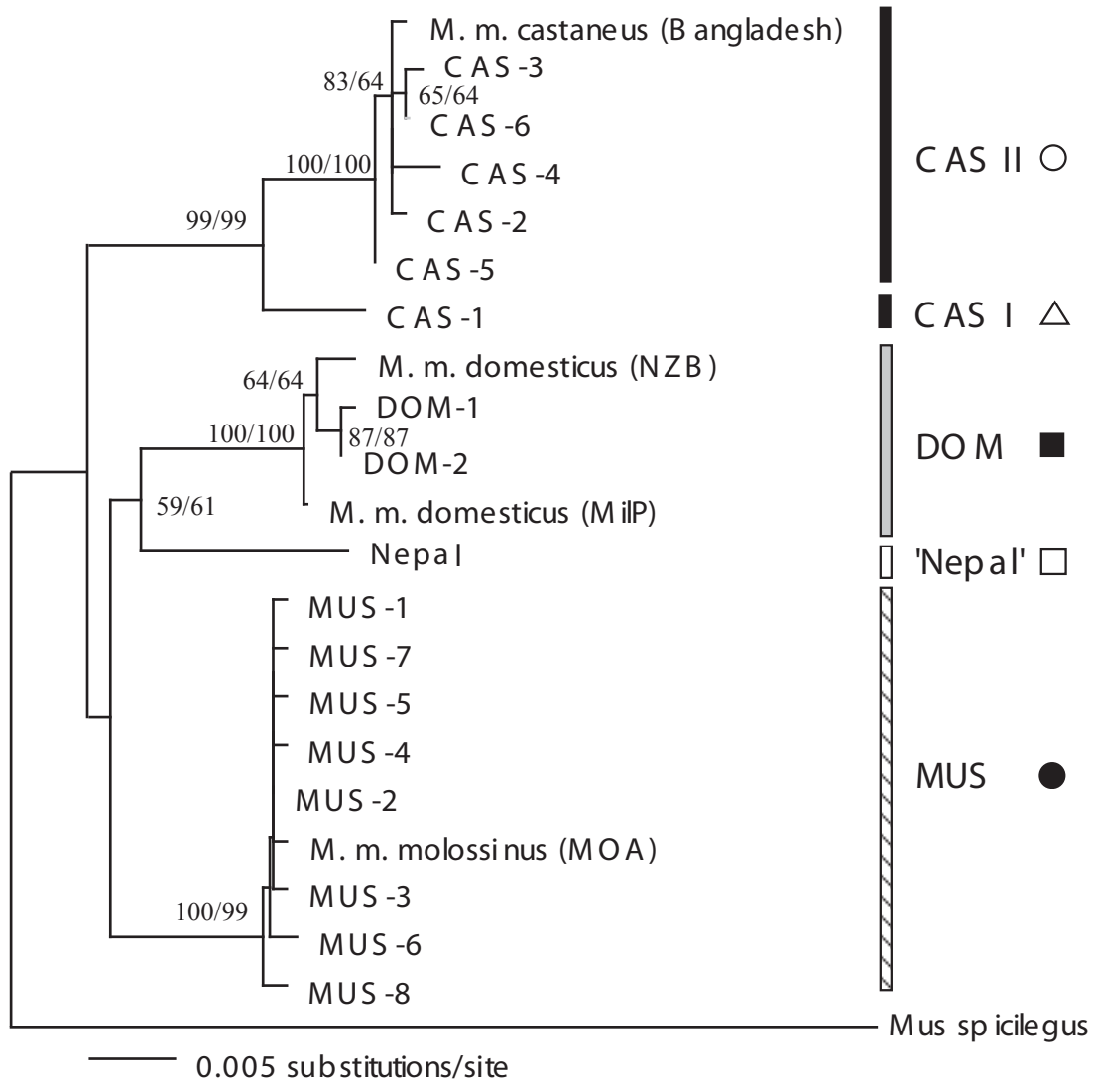
Collection locality and its number	Specimen	r sex	Genotype		
			mtDNA	Sry	rDNA
<i>Mus musculus musculus</i>					
1. Kraskino, Russia	HS1473	♂	MUS-1	D	MUS
2. Peklyong I., Korea	HS682	♂	MUS-2	E	MUS
3. Sweon, Korea	HS2320	♂	MUS-3	E	-
<i>Mus musculus castaneus</i>					
4. Taitong, Taiwan	HS2400	♂	CAS-1*	D	CAS
5. Bogor, Indonesia	HS2401	♀	CAS-2	-	-
	MZB22298	♀	DOM-1	-	-
	MZB22299	♂	DOM-1	C	CAS
	HS2322	♂	DOM-2	-	CAS
<i>Mus musculus</i> spp.					
6. Kathmandu, Nepal	HS1523	♂	'Nepal'	B	CAS
<i>Mus musculus molossinus</i>					
<b>Hokkaido, Jpn</b>					
7. Nayoro, Hokkaido	HS2326	♂	CAS-3	E	MUS/CAS
	HS2327	♀	CAS-3	-	MUS/CAS
8. Asahikawa, Hokkaido	KT3285	♀	CAS-3	-	MUS/CAS
9. Fukagawa, Hokkaido	HS2324	♀	CAS-3	-	MUS/CAS
	HS2325	♀	CAS-3	-	MUS/CAS
10. Takikawa, Hokkaido	HS2444	♂	CAS-3	E	MUS/CAS
	HS2445	♂	CAS-3	E	MUS/CAS
11. Naganuma, Hokkaido	HS2446	-	CAS-3	-	MUS
	HS2447	♂	CAS-3	E	MUS
	HS2448	♂	CAS-3	E	MUS/CAS
	HS2449	♂	CAS-3	E	MUS/CAS
12. Otaru, Hokkaido	HS2340	♂	CAS-4	-	MUS/CAS
	HS2334	♀	CAS-3	-	-
	HS2450	♂	CAS-3	-	-
13. Obihiro, Hokkaido	HS2781	♀	CAS-3	-	-
14. Kushiro, Hokkaido	KT3284	♀	CAS-5	-	-
	HS2402	♂	CAS-3	E	MUS
	HS2403	♂	CAS-3	-	MUS
15. Kyowa, Hokkaido	HS2779	♂	MUS-2	E	-
	HS2780	♀	MUS-2	-	-
16. Date, Hokkaido	HS2451	♂	MUS-2	E	MUS
	HS2452	♂	MUS-2	E	MUS
	HS2453	♀	MUS-2	-	MUS
17. Okushiri I., Hokkaido	HS298	♂	MUS-4	E	MUS/CAS
	HS300	-	MUS-4	-	MUS/CAS

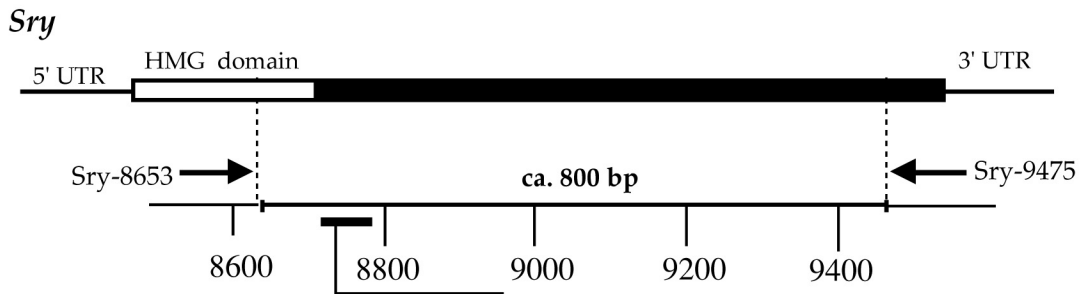
24. Maesawa, Iwate Pref.	IWT-04	♂	CAS**	E	-
25. Sakata, Yamagata Pref	YGA-03	♂	MUS**	E	-
	YGA-05	♂	MUS-6	E	MUS/CAS
26. Sakekawa, Yamagata	FYGA-20	♂	MUS**	E	MUS
	YGA-21	♂	MUS**	E	MUS
	YGA-23	♂	MUS**	E	-
	YGA-27	♂	MUS**	E	MUS/CAS
27. Tsuruoka, Yamagata Pr	YGA-13	♂	MUS	E	MUS
	YGA-28	♀	MUS**	-	MUS/CAS
28. Tendo, Yamagata Pref.	YGA-07	♀	MUS**	-	MUS
29. Sagae, Yamagata Pref.	YGA-06	♂	MUS**	E	-
30. Yamagata, Yamagata	FYGA-08	-	MUS**	-	-
31. Sendai, Miyagi Pref.	MAI-29	♂	CAS-6	E	-
<b>Other parts of Japan</b>					
32. Ishioka, Ibaraki Pref.	IBK-03	♀	MUS**	-	-
	IBK-04	♂	MUS**	E	-
	IBK-07	♂	MUS**	E	-
33. Chiba, Chiba Pref.	HS2468	♀	MUS-6	-	-
	HS2469	♂	MUS-6	E	-
	HS2470	♂	MUS-6	-	MUS
	HS2471	♀	MUS-6	-	-
34. Kanazawa, Ishikawa Pr	HS2814	♀	MUS-2	-	-
	HS2815	♂	MUS-4	-	-
	HS2816	♀	MUS-7	-	-
	HS2817	♂	MUS-2	-	-
35. Miyazaki, Miyazaki Pref	KT3225	♂	MUS-2	E	MUS
	KT3226	♀	MUS-2	-	-
36. Okinawa I.	HS2788	♀	MUS-8	-	-

For genotypes, see Figures 2 (mtDNA) and 3 (Sry). For rDNA, the sizes of the *Eco*RI fragments were taken into account: MUS, 9.0 kb; CAS, 9.0 kb + 7.5 kb + 7.0 kb; MUS/CAS, 9.0 kb + 7.5 kb.

\*, \*\*: Genotypes were referred from Suzuki et al. (2004) and Furusawa (2000), respectively.







	8711	8721	8731	8775	type
<i>M. m. domesticus</i> (B6JEI-YPOS)	GTCGATATCCCCACTGGGCACCCGCA			ACCAC	A
Kathmandu, Nepal	.....G.....			..T..	B
Bogor, Indonesia	.....			..T..	C
<i>M. m. castaneus</i> (CAST/Ei)	.....		T...	.....	D
<i>M. m. musculus</i> (B6JEI-YCZECHII)	.....		T...	.....	D
Taitong, Taiwan	.....		T...	.....	D
Kraskino, Russia	.....		T...	.....	D
Peklyong, Korea	..T.....		T...	.....	E
Hakodate, Japan	..T.....		T...	.....	E
outgroup	.....		T...	.....	D

Terashima *et al*, Fig. 3