



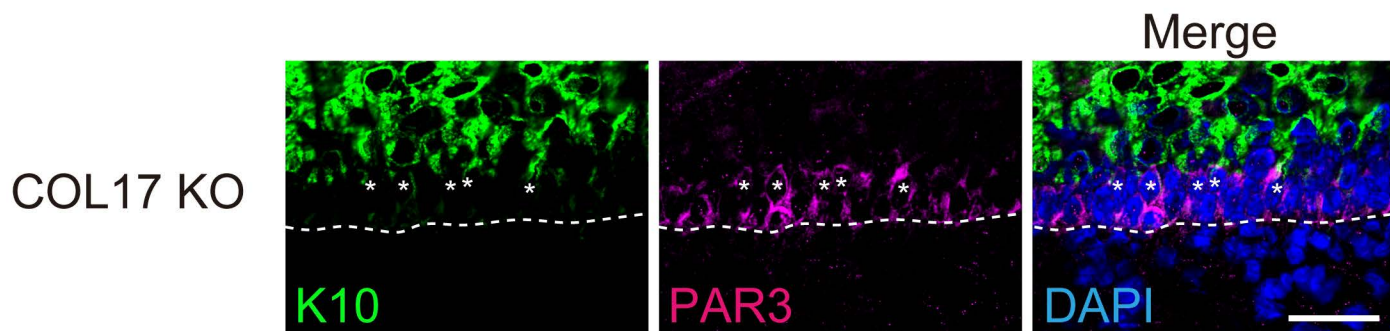
HOKKAIDO UNIVERSITY

Title	Type XVII collagen interacts with the aPKC-PAR complex and maintains epidermal cell polarity
Author(s)	Watanabe, Mika; Kosumi, Hideyuki; Osada, Shin-Ichi et al.
Citation	Experimental dermatology, 30(1), 62-67 https://doi.org/10.1111/exd.14196
Issue Date	2021-01
Doc URL	https://hdl.handle.net/2115/83791
Rights	This is the peer reviewed version of the following article: Watanabe, M, Kosumi, H, Osada, S-I, et al. Type XVII collagen interacts with the aPKC - PAR complex and maintains epidermal cell polarity. Exp Dermatol. 2021; 30: 62- 67., which has been published in final form at https://doi.org/10.1111/exd.14196 . This article may be used for non-commercial purposes in accordance with Wiley Terms and Conditions for Use of Self-Archived Versions.
Type	journal article
File Information	Watanabe_et_al_HUSCUP_Suppl. Fig.pdf

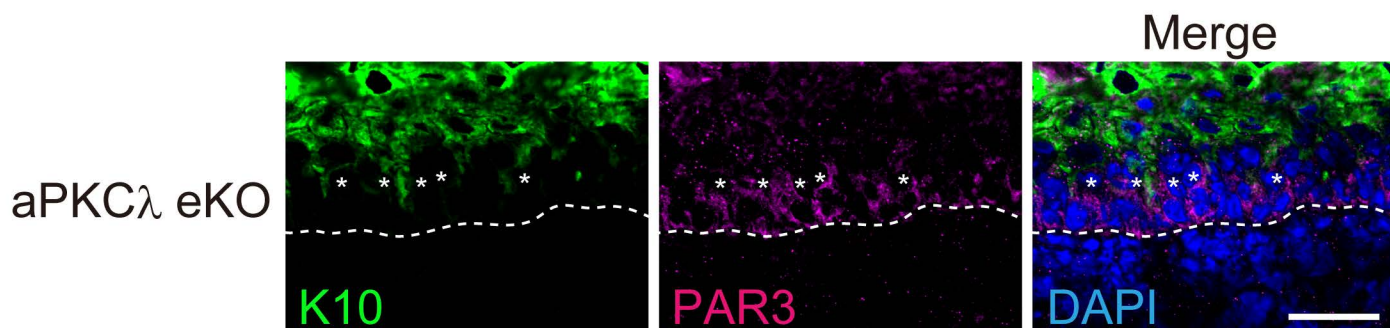


Supplementary Figure 1. COL17 and epidermal cell polarity

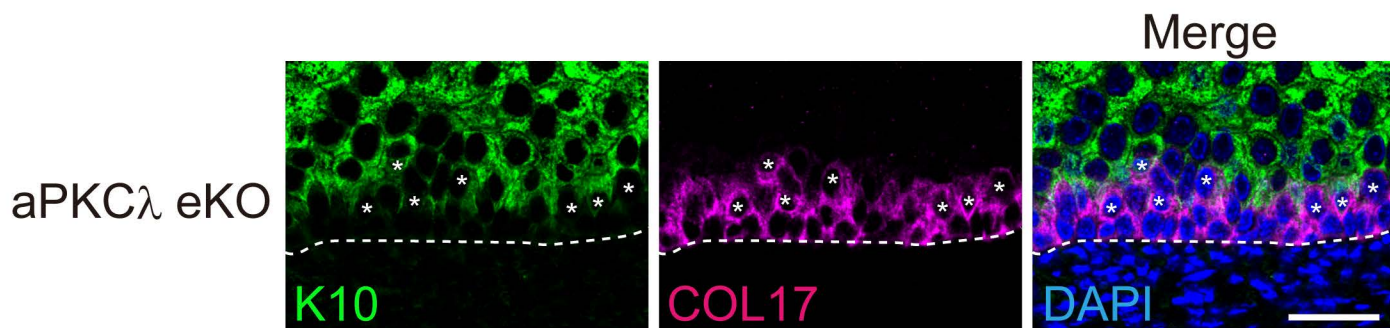
a



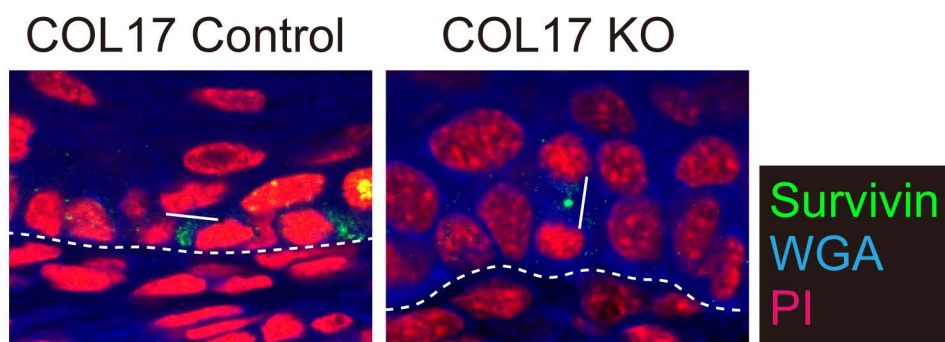
b



c



d



Supplementary Figure 1. COL17 and epidermal cell polarity

(a), (b) PAR3 and K10 labeling of COL17 KO (a) and aPKC λ eKO (b) skin (P1, paw). (c) COL17 and K10 labeling of aPKC λ eKO skin. Asterisks indicate PAR3+K10+ or COL17+K10+ suprabasal keratinocytes. BMZ is indicated with dotted lines. Scale bar: 20 μ m. (d) Survivin labeling of COL17 KO and control skin (P1, paw). Wheat Germ Agglutinin (WGA) labels cell membrane. The bars indicate the direction of cell division. BMZ is indicated with dotted lines. Scale bar: 10 μ m.