



HOKKAIDO UNIVERSITY

Title	Description of new Species of Genera Megarhogas, Cytomastax and Stantonina (Braconidae) from Fomosa
Author(s)	Watanabe, Chihisa
Citation	Insecta matsumurana, 6(4), 184-189
Issue Date	1932-11
Doc URL	https://hdl.handle.net/2115/9241
Type	departmental bulletin paper
File Information	6(4)_p184-189.pdf



DESCRIPTION OF NEW SPECIES OF GENERA
MEGARHOGAS, *CYSTOMASTAX* AND
STANTONIA (*BRACONIDAE*) FROM FORMOSA

By

CHIHISA WATANABE

(With 3 Textfigures)

Genus *Megarhogas* SZÉPLIGETI

Megarhogas SZÉPLIGETI, Gen. Insect., 22-24, p. 83 (1904); BAKER, Philip. Journ. Sc., Vol. XII, p. 299 (1917); ENDERLEIN, Arch. für Naturgesch., 84 A, p. 152 (1920).

Genotype:—*Megarhogas longipes* SZÉPLIGETI

Megarhogas perinae nov. sp.

♀. Head black, mouth-parts reddish yellow, palpi pale; antennae reddish yellow tinged with black at the base. Thorax and abdomen reddish yellow; 6.-8. abdominal segments with hypopygium black. Wings yellowish hyaline; stigma and veins yellow. Legs dark brown; all coxae and tibiae yellow, the former tinged with brown above.

Head smooth and shining; eyes very large, emarginate opposite the antennae; face slightly raised medially, striate-rugose above; antennae long and slender, more than 66 jointed (the apex broken off); scapus obliquely truncate at the apical surface. Prothorax striate on each side; mesonotum smooth and shining; parapsidal furrows deep, obscurely crenulate; mesopleura smooth and shining with an oblique discal furrow; propodeum reticulate-rugose with a sharp-rimmed median lanceolate area which is crossed by three transverse carinae; on each side (metapleurae) with a large, bluntly tipped tooth beneath. Stigma long and slender; 1st abscissa of radius about one fifth-length of the 2nd; 2nd cubital cell three times as long as high, nearly rectangular; 1st intercubital nervure swollen on the upper third and bent at the beginning of the swollen portion; 2nd abscissa of radius swollen at the base; recurrent nervure interstitial; nervulus postfurcal; radial cell of the hind wings coarctate owing to a sinus of radius. Legs long and slender; hind tibial spurs slightly curved, naked, a little shorter than the 4th tarsal joint. Abdomen subpetiolate, twice longer

than the head and thorax taken together; 1st tergite three times as long as at its apical breadth which is twice longer than at the base; 2nd tergite as long as the 1st, finely broadened to the apex; tergites 3.-5. quadrate, nearly parallel-

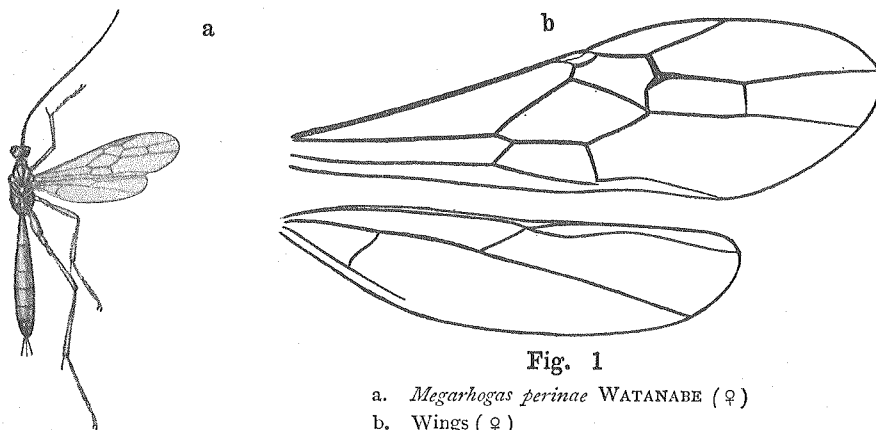


Fig. 1

a. *Megarhogas perinae* WATANABE (♀)
b. Wings (♀)

sided, the following tergites transverse; 1st to a basal half of the 5th tergite densely longitudinally rugose, becoming finer posteriorly, the rest smooth, rather shining; tergites 1.-3. longitudinally carinated in the middle; hypopygium enlarged; ovipositor short, 1 mm.

Length. 14-15 mm.

♂. Much resembles the female, but differs from it in having the antennae longer and slenderer.

Length. 10-14 mm.

This species may easily be distinguished from the cogenetic species by the head and the tergites 6.-8. with hypopydium being black.

It was reared from the larva of *Perina nuda* FABRICIUS by J. SONAN in Formosa.

Hab.—Formosa (Keibi 1 ♀, 14/VIII, 1921, S. TOKUNAGA; Baibara 1 ♀, 23/VII, 1925, K. KIKUCHI; Kanshirei, 1 ♂, 20/IX, 1926, J. SONAN; Taihoku, 1 ♂, 5/IX, 1927, E. SHIBATA)

Type in Entomological Museum, Hokkaido Imperial University.

Japanese Name.: *Sukibadokuga-komayu*.

Genus *Cystomastax* SZÉPLIGETI

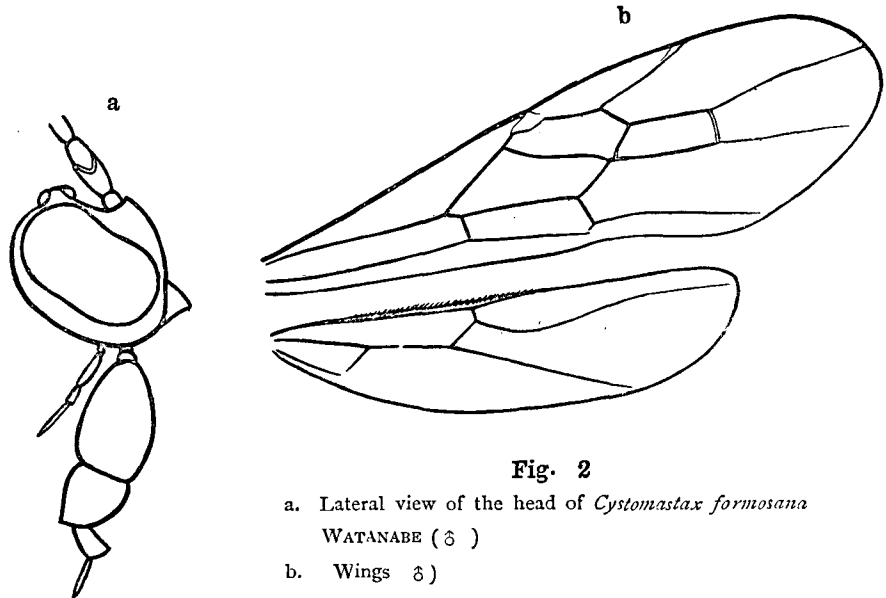
Cystomastax SZÉPLIGETI, Gen. Insect., 22-24, p. 81 (1904); ENDERLEIN, Arch. für Naturgesch., 84 A, p. 149 (1920),

Genotype:—*Cystomastax macrocentroides* SZÉPLIGETI

Cystomastax formosana nov. sp.

♂. Dark-brown; head with the palpi and antennae reddish yellow, tinged with brown at the vertex and the apices of mandibles. Legs yellow; four posterior coxae brown. Wings brownish subhyaline; stigma and veins brown; tegulae reddish yellow.

Head smooth and shining; eyes very large, emerginate opposite the antennae; face medially raised, somewhat transversely striate; scapus truncate obliquely at the apical surface; maxillary palpi long and large, the joints 2.-4. greatly dilated, cylindrical; labial palpi stout, the joints 2.-3. more or less dilated.

**Fig. 2**

- a. Lateral view of the head of *Cystomastax formosana*
WATANABE (♂)
b. Wings ♂)

Mesonotum shining, obsolete punctured; parapsidal furrows deep, slightly crenulate; mesopleura smooth with a discal crenulate furrow; propodeum shallowly reticulate-rugose with a median carina; spiracles small, oval; on each side of propodeum with a blunt tooth beneath. Radius inserted at the basal third of stigma; 1st abscissa of radius about one fourth-length of the 2nd; 2nd cubital cell three times as long as high, trapezoid-form, recurrent nervure rejected; nervulus postfurcal; praembrachial transverse nervure of the hind wings inserted at a short distance from the base of radius. Legs long and slender; hind tibial spurs slightly curved, naked, as long as the 4th tarsal joint. Abdomen subpetiolate, longer than the head and thorax taken together; 1st tergite broadened apically, two and half times as long as at the apical breadth, with

tubercles which are situated close to the base; 2nd tergite as long as the 1st, a little longer than the apical breadth; the rest transverse; tergites 1.-6. longitudinally reticulate-rugose; first two and a basal half of the 3rd tergite longitudinally carinated medially.

Length. 9 mm.

♀. Unknown.

This species differs from the genotype, *C. macrocentroides* SZÉPLIGETI, in the structure of the 1st abdominal tergite, and agrees with that of ENDERLEIN'S cogeneric species, *C. zeliformis* and *C. fuscipalpis*, but it can be easily distinguished from them by the praebrachial transverse nervure of the hind wings, which is inserted at a short distance from the base of radius.

Hab.—Formosa (Kōshun 2 ♂♂, 7/IV, 1912; H. SAUTER).

These specimens are in the H. SAUTER'S collection sent by Dr. W. HORN, director of "Deutsches Entomologisches Museum in Berlin-Dahlem", to Dr. T. UCHIDA.

Type in Deutsches Entomologisches Museum.

Paratype in Ent. Mus. Hokk. Imp. Univ.

J. N.: *Taiwan-higebuto-komayu*.

Genus *Stantonia* ASHMEAD

Stantonia ASHMEAD, Proc. U. S. Nat. Mus., Vol. XXVIII, p. 146 (1904); ENDERLEIN, Zool. Anz., p. 450 (1905); id., Arch. für Naturgesch., 84 A, p. 162 & 212 (1920).

Mimogathis ENDERLEIN, Zool. Anz., p. 450 (1905); id., Arch. für Naturgesch., 84 A, p. 162 (1920).

Genotype:—*Stantonia flava* ASHMEAD.

Stantonia issikii nov. sp.

♀. Reddish yellow; apices of the mandibles and the stemmaticum black; antennae reddish yellow, darkened towards the apex, with a black spot at the two basal joints. Wings hyaline, smoky at the apex; stigma and veins brown. Hind tarsi pale-yellow; hind tibiae on the apical third and all the 5th tarsal joint black.

Head finely punctured with yellow pubescence; occiput margined on each side; antennae longer than the body, scapus truncate obliquely at the apical surface; mixillary palpi six-jointed, the two basal joints short; labial palpi four-jointed, the 3rd being very short. Thorax finely punctured; parapsidal furrrows distinct; mesopleura with a discal crenulate furrow; scutellum smooth and shining; propodeum shining, scattering punctures with some short transverse carinae in the middle. Radius large, extending to the apex of wing; 2nd cubital cell triangular; 2nd intercubital nervure oblique, but not bent at the middle; recurrent

nervure opened in the 1st cubital cell; nervulus interstitial; radius of the hind wings fine, decolored. Hind coxæ granulate with some striae above; hind tibial spurs nearly equal in length, as long as the 2nd tarsal joint. Abdomen longer than the thorax, subpetiolate, falcate, compressed towards the apex; smooth and shining; 1st tergite about four times longer than at the apical breadth, widened close at the base, where tubercles are situated; 2nd tergite as long as a half length of the 1st; 3rd tergite a little shorter than the 2nd, the rest transverse; ovipositor a little shorter than the thorax and abdomen taken together, 6 mm.

Length. 8 mm.

♂. Unknown.

Closely allied to *Stantonia flava* ASHMEAD, but differs from it in having the body-colour reddish yellow, all the 5th tarsal joint black, and the ovipositor much longer than the abdomen.

Hab.—Formosa (Kururu, 1 ♀, 21/III, 1926, S. ISSIKI)

Type in Ent. Mus. Hokk. Imp. Univ.

J. N.: *Issiki-tsumaguro-komayu*.

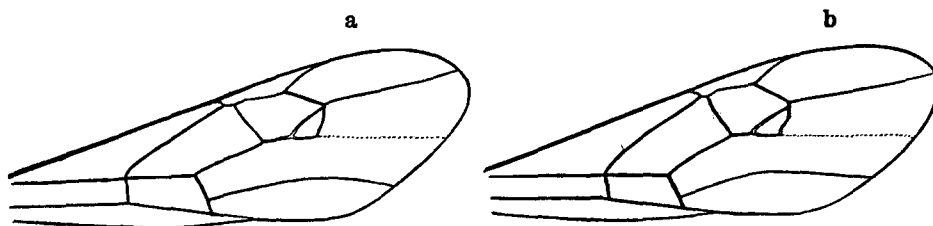


Fig. 3

a. Fore wing of *Stantonia issikii* WATANABE (♀)

b. Fore wing of *Stantonia sauteri* WATANABE (♀)

***Stantonia sauteri* nov. sp.**

Very similar in structure and colouration to the preceding species, but differs from it in the following points:

♀. Smaller than the preceding, being 6.5 mm. in length; median lobe of the mesonotum and tergites 2.-3. at the hind margins with each a black marking, the former with a longitudinal median furrow anteriorly; antennae 53 jointed; 2nd intercubital nervure slightly bent at the middle outwardly; propodeum reticulate-rugose, areated posteriorly, with a median carina at the base and two transverse carinae in the middle; ovipositor as long as the abdomen, 3 mm.

Length. 5.5 mm.

♂. Agrees with the female, but the antennae slenderer, more than 41 jointed (the apex broken off), and the nervulus being slightly antefurcal.

Length. 5.5 mm.

These specimens are presented in the H. SAUTER's collection.

Hab.—Formosa (Koshun, 1 ♀, VII, 1912; Paroe, 1 ♂ IX, 1912, H. SAUTER).

Holotype in Deutsches Entomologisches Museum.

Allotype in Ent. Mus. Hokk. Imp. Univ.

J. N.: *Sauter-tsumaguro-komayu*.

摘 要

本文に擧げたる臺灣産の小蘗蜂の學名及び和名は次の如し。

- | | |
|-----------------------------------------------------|-------------|
| 1. <i>Megarhogas perinae</i> WATANABE (nov. sp.) | スキバドクガコマユ |
| 2. <i>Cystomastax formosana</i> WATANABE (nov. sp.) | タイワンヒゲアトコマユ |
| 3. <i>Stantonia issikii</i> WATANABE (nov. sp.) | イツシキツマグロコマユ |
| 4. <i>Stantonia sauteri</i> WATANABE (nov. sp.) | ザウテルツマグロコマユ |