



# HOKKAIDO UNIVERSITY

Title	Descriptions of one new Species and one new form of Butterflies from Japan and Formosa
Author(s)	Matsumura, S.
Citation	Insecta matsumurana, 9(4), 173-174
Issue Date	1935-06
Doc URL	<a href="https://hdl.handle.net/2115/9304">https://hdl.handle.net/2115/9304</a>
Type	departmental bulletin paper
File Information	9(4)_p173-174.pdf



DESCRIPTIONS OF ONE NEW SPECIES AND  
ONE NEW FORM OF  
BUTTERFLIES FROM JAPAN AND FORMOSA

By

Dr. S. MATSUMURA

(With 2 Textfigures)

*Rapala mushana* n. sp.

Closely allied to *R. takasagonis* MATS., but differs from it as follows:

♀. Upperside—Anal lobe of the secondaries black, in the middle scattering a few white scales, its fringe being concolorous, only at the base on the lower part traversed by a white band.

Underside—Termen and submarginal band brown, the latter externally defined by a white line and broken at the longitudinal veins; postmedial band dark brown, becomes wavy towards the hind margin, internally defined by a reddish brown and externally by a white line; secondaries similar to the primaries, only the lower part of the postmedial band becomes w-shaped and in the interspace 2 with a reddish brown patch, pupillated with black; marginal line black, at the lower half internally defined by a white line.

Exp. 38 mm.

♂. Nearly the same with the female in the coloration, somewhat darker in colour, which extends on the whole surface; near the base below the discoidal cell with a deep bluish patch; sexual mark grayish, large, rectangular, excavated; anal lobe reddish, the fringe black, mingling a few white hair at the lower side, near its apex with a black patch.

Underside darker than that of the female, postmedial band of the primaries narrower, with no internal reddish band, while the external white band being more conspicuous; submarginal band obsolete, with a spur of a paler band; secondaries nearly the same with the

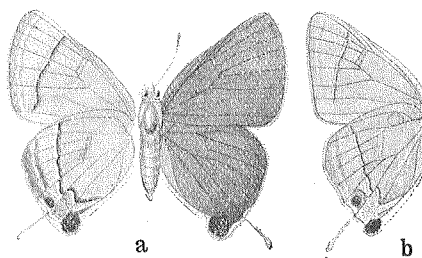


Fig. 1.

*Rapala mushana* n. sp.

a. ♀. b. ♂.

female, only the postmedial band narrower and lacking the internal reddish lining except at the w-shaped part; submarginal line obsolete and narrower; anal lobe and ocellar patch in the interspace 2 similar to those of the female; sexual mark oval and inflated, being somewhat darker than the ground color.

Exp. 36 mm.

Hab.—Formosa; 2 (1 ♀, 1 ♂) specimens were collected on the 2nd of August, 1934, by Mr. S. HIRAYAMA at Musha near Hori.

*Mycalesis sangaica* BUTL. f. *ushiodai* n. f.

Closely allied to the typical form, but differs from it as follows:

♂. Upperside—Ocellar spot of the primaries in the interspace 2 situated further outwardly from the medial band.

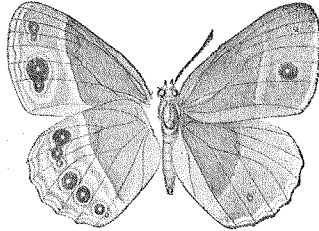


Fig. 2.

*Mycalesis sangaica* BUTL.  
f. *ushiodai* n. f. (♂)

Underside—Submarginal line situated nearer to the ocellar series; white medial and submarginal bands much nearer to the ocellar series.

Hab.—Honshu; one male specimen was collected in August, 1934, at Nikko by Mr. KINGO USHIODA and sent to me for identification through Mr. S. HIRAYAMA.

This species has not been yet recorded from Japan proper.