



Title	A new Genus and a new Species of Derbidae from Fukushima
Author(s)	Matsumura, Shonen
Citation	Insecta matsumurana, 10(1-2), 79-80
Issue Date	1935-11
Doc URL	<a href="https://hdl.handle.net/2115/9315">https://hdl.handle.net/2115/9315</a>
Type	departmental bulletin paper
File Information	10(1-2)_p79-80.pdf



A NEW GENUS AND A NEW SPECIES OF  
*DERBIDAE* FROM FUKUSHIMA

By

Prof. SHONEN MATSUMURA

(With one Textfigure)

Genus *Nomuraida* n. g.

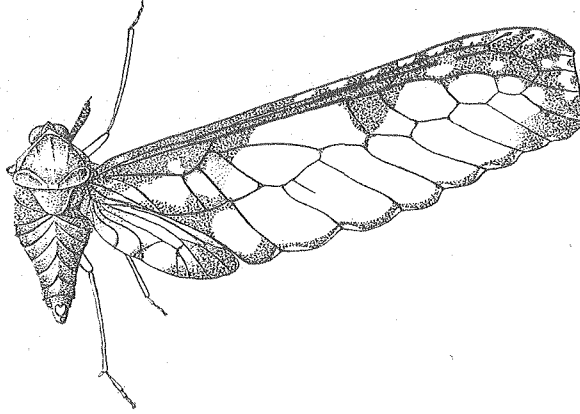
Closely allied to *Zoraida* KIRK. (*Thoracis* WEST.), but differs from it especially in the constriction of the tegmina:

Tegmina nearly parallel on the anterior and posterior margins, the posterior margin with a series of crenules, being slightly emarginated at each end of the apical veins; basal cell much shorter, from which arise 4 veins, the 1st vein reaches the apex, from which emits 4 oblique veins towards the posterior margin, the 2nd also forked, but sending no oblique vein; costa with about 10 oblique short veins, those of the inner being mostly obsolete, at the apex with 3 apical cells; the posterior margin with 8 cells, the veins being much narrower. Wings much smaller, the 2nd discoidal cell emits 2 veins, the posterior one being forked, the 3rd discoidal cell emits 2 veins, the anal vein being strongly incurved.

Genotype—*Nomuraida hibarensis* MATS. (n. sp.)

*Nomuraida hibarensis* n. sp.

♀. Testaceous brown. Antennae dark brown, at the apices being paler. Scutellum darkened towards the apex, at the extreme apex pale testaceous. Tegmina hyaline with a yellowish shade, at the costa narrowly and at the apex broadly dark purple, at the latter with some hyaline spots; from the costa arises 2 dark purplish triangular patches towards the middle; at the base dark purple; the narrower veins mostly brownish, the robuster veins being mostly karmine red, at the apico-costal half with 8 yellowish spots; the posterior margin narrowly fuscous and at the end of the veins reddish. Wings hyaline, at the apices fuscous, the veins mostly reddish. Sternum dark brown. Legs yellow except the coxae which are dark brown. Abdomen brownish, the internal



*Nomuraida hibarensis* n. sp. × 5

segments paler. Anal tube karmine red, the last ventral segment at the hind margin somewhat conically produced. Genital cushions nearly half so long as the abdomen, paler, the ovipositor being scarcely exposed at the apices.

Exp. 28 mm.; Length of the body 6 mm.

Hab.—Honshu; one female specimen was collected at Lake Hibara in Pref. Fukushima by SHIZUMU NOMURA (22, VIII, 1935).