



HOKKAIDO UNIVERSITY

Title	A new Genus of Papilionidae
Author(s)	Matsumura, Shonen
Citation	Insecta matsumurana, 10(3), 86-86
Issue Date	1936-03
Doc URL	https://hdl.handle.net/2115/9318
Type	departmental bulletin paper
File Information	10(3)_p86-86.pdf



Diese Art schliesst sich eng an *S. (Scolia) oculata* MATSUMURA und *S. (Scolia) formosicola* BETREM an, weicht aber von den beiden Arten durch die weissliche Behaarung am Hinterrand jedes Tergits ab.

Schliesslich ist es mir ein Bedürfnis, Herrn K. YASUMATSU, der mir dieses wertvolle Material zugeschickt hat, meinen verbindlichsten Dank auszusprechen.

A NEW GENUS OF *PAPILIONIDAE*

By

Prof. SHONEN MATSUMURA

(With Plate II)

In 1934 Prof. T. SHIRAKI and J. SONAN described a wonderful new species of *Papilio* from Formosa—*Papilio maraho*.

Examining it closely the present author found that it may belong to an independent genus, as *Troides* HÜB. (*Ornithoptera* BOISD.) stands now as an independent one.

Agehana n. g.

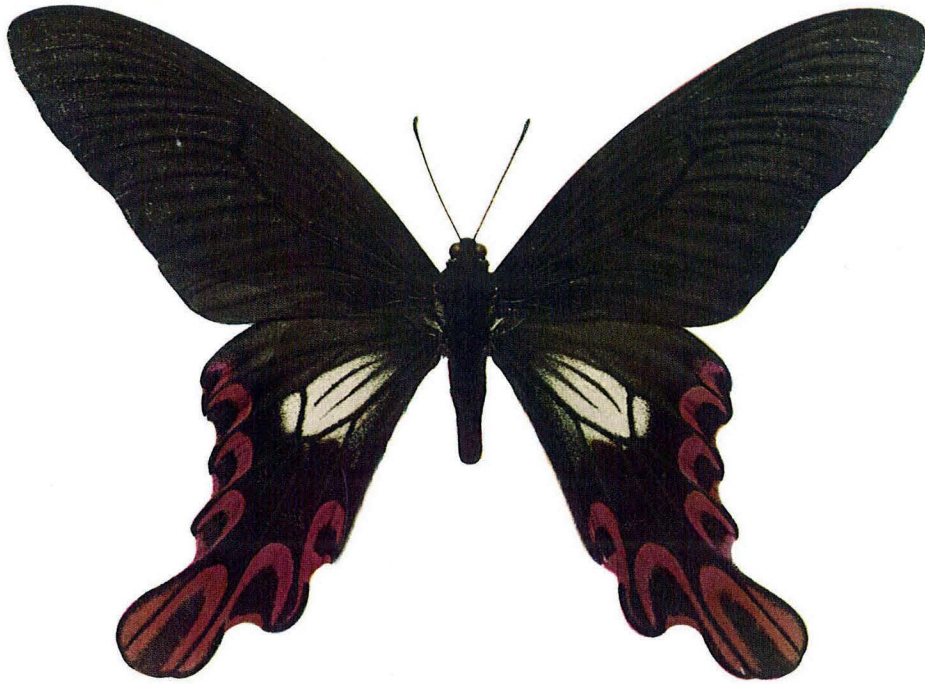
Differs from *Papilio* HAASE (s. str.) in the following points:

Fore wings slenderer, at the costa slightly arched, so that the costal margin nearly parallel with the termen; the tornal angle broadly obtuse; vein 9 slightly arched, so that nearly parallel with the costa; vein 6 arises from above the middle of the discocellulars, the middle discocellular being distinctly incurved.

Hind wings broadest at the basal one third; veins 3 and 4 open at the end of the tail, 4 nearer to 5 than to 3; the discocellular between the veins 5 and 6 longer and slightly incurved; tail broader, with only one crenule at the anal margin.

Genotype—*Papilio maraho* SHIRAKI et SONAN (*Zephyrus*, V, pt. 4, p. 177, Tab. 15, f. 1, 2, 1934).

The present material (♂) belongs to Mr. S. HIRAYAMA, Director of the HIRAYAMA Museum at Inokashira, Tokyo.



Agehana maraho (SHIRAKI et SONAN) (♂)