



HOKKAIDO UNIVERSITY

Title	Spatial diversity in gene expression for VDCC γ subunit family in developing and adult mouse brains
Author(s)	Fukaya, Masahiro; 深谷, 昌弘; Yamazaki, Maya et al.
Citation	Neuroscience Research, 53(4), 376-383 https://doi.org/10.1016/j.neures.2005.08.009
Issue Date	2005-09-19
Doc URL	https://hdl.handle.net/2115/934
Type	journal article
File Information	NR53-4.pdf



**Spatial diversity in gene expression for VDCC γ subunit family
in developing and adult mouse brains**

Masahiro Fukaya^a, Maya Yamazaki^b, Kenji Sakimura^b, and Masahiko Watanabe^a

^aDepartment of Anatomy, Hokkaido University Graduate School of Medicine, Sapporo
060-8638, Japan

^bDepartment of Cellular Neurobiology, Brain Research Institute, Niigata University, Niigata
951-8122, Japan

The total number of pages (25), Figures (4), and Table (1)

Correspondence to: **Masahiro Fukaya**

Department of Anatomy

Hokkaido University Graduate School of Medicine

Sapporo 060-8638, Japan

TEL, +81-11-706-5030; FAX, +81-11-706-5031

E-mail, mfukaya@med.hokukdai.ac.jp

Abstract

The γ subunit of voltage-dependent Ca^{2+} channels (VDCCs) is characterized by molecular diversity and regulation of AMPA-type glutamate receptors as well as VDCCs. In the present study, we examined expressions for the VDCC γ 1-8 subunit mRNAs in developing and adult mouse brains by *in situ* hybridization. In adult brains, the γ 2 and γ 7 subunit mRNAs were widely expressed in various grey matter regions with the highest level in cerebellar Purkinje cells and granule cells. The γ 3 and γ 8 subunit mRNAs predominated in the telencephalon, with the latter being at striking levels in the hippocampus. The γ 4 subunit mRNA was enriched in the olfactory bulb, striatum, thalamus, and hypothalamus. The γ 5 subunit mRNA was abundant in the olfactory bulb, hippocampal CA2, thalamus, inferior colliculus, and Bergmann glia. Transcripts of these subunits were detected in embryonic brains: some showed well-preserved spatial patterns (γ 2, γ 5, γ 7 and γ 8), while others underwent developmental up- (γ 3) or down-regulation (γ 4). In contrast, the γ 1 and γ 6 subunit mRNAs were negative or very low throughout brain development. Therefore the present study has revealed spatial diversity in gene expression for individual VDCC γ subunits, presumably reflecting functional diversity of this protein family and their differential involvement in neural function.

Key words: VDCC γ subunit, Stargazin, TARPs, Development, mRNA, *In situ* hybridization, Brain.

Introduction

The γ subunit of voltage-dependent Ca^{2+} channels (VDCCs) has been originally identified as an auxiliary subunit of 1,4-dihydropyridine (DHP)-sensitive or L-type VDCCs in skeletal muscles (Bosse *et al.*, 1990; Jay *et al.*, 1990; Powers *et al.*, 1993). The second subunit, $\gamma 2$ subunit or stargazin, was identified as a gene responsible for the spontaneous mutant mouse, *stargazer*, which is characterized by absence epilepsy and ataxia (Letts *et al.*, 1998). Subsequent studies have revealed six additional subunits and, hence, there are eight members to date in the VDCC γ family (Black and Lennon., 1999; Burgess *et al.*, 1999, 2001; Klugbauer *et al.*, 2000; Chu *et al.*, 2001; Moss *et al.*, 2002). Each γ subunit contains four putative transmembrane domains with intracellularly located N- and C-termini (Chu *et al.*, 2001; Black, 2003). The $\gamma 1$, $\gamma 2$, $\gamma 3$, $\gamma 4$, $\gamma 5$, and $\gamma 7$ subunits have been shown to affect the function of L-type, T-type, and P/Q-type VDCCs, when expressed in various combinations (Wei *et al.*, 1991; Eberst *et al.*, 1997; Letts *et al.*, 1998; Klugbauer *et al.*, 2000; Freise *et al.*, 2000; Rousset *et al.*, 2001; Green *et al.*, 2001; Moss *et al.*, 2002, Held *et al.*, 2002). On the other hand, the $\gamma 2$ subunit and its structurally-related members, $\gamma 3$, $\gamma 4$, and $\gamma 8$ subunits, are crucial for cell surface expression, synaptic targeting, recycling, channel activity, and gating of α -amino-3-hydroxy-5-methyl-4-isoxazolepropionic acid (AMPA) receptors, and hence named as transmembrane AMPA receptor regulatory proteins (TARPs) (Chen *et al.*, 2000; Tomita *et al.*, 2003, 2004, 2005; Yamazaki *et al.*, 2004; Priel *et al.*, 2005). The γ subunit family is expressed in various tissues, including the brain, skeletal muscle, heart, lung, and testis (Chu *et al.*, 2001). In the brain, all γ subunits, except the $\gamma 1$ subunit, are expressed (Chu *et al.*, 2001). Of these, four TARPs have been reported to display high and distinct expressions

in the developing and adult brains (Klugbauer *et al.*, 2000; Chen *et al.*, 2000; Tomita *et al.*, 2003). However, comparative and systematic analysis on the expression of the VDCC γ family has not yet been performed. In the present study, we examined expressions for the VDCC γ 1-8 subunit mRNAs in developing and adult mouse brains by *in situ* hybridization with [³³P]dATP-labeled antisense oligonucleotide probes, and have revealed their distinct regional and cellular expression in the brain.

Materials and Methods

Probes

To detect mRNAs for each VDCC γ subunit, specific antisense oligonucleotide probes were synthesized as follows: 5'-gtgctctggctcagcgtccatgcaggattcccaggggttctgagg-3' for the γ 1 subunit (GenBank accession No. AJ006306), 5'-gatgcgggtgatggcggaggcctggaggtagtcggtggcgccggc-3' for the γ 2 subunit (accession No. AF077739), 5'-cggcaggcgcgcaaatgtagacttctcaggagctctgaatggga-3' for the γ 3 subunit (accession No. AJ272044), 5'-ggcgtaaaggagaggaggaagaggccttaaggaactcccgttggt-3' for the γ 4 subunit (accession No. AJ272045), 5'-catctggtcatagtctgggcacttgagcaaagctgggtagttgct-3' for the γ 5 subunit (accession No. AF361347), 5'-tgggccaccacttggggcacagtacactccagggccaggaag-3' for the γ 6 subunit (accession No. AF361348), 5'-gcatagtgaaagtactgctcagagctgctggcctgttcat-3' for the γ 7 subunit (accession No. AF361349), and 5'-acaccacaaaccctcttctcattccagcgtttcaatgactccag-3' for the γ 8 subunit (accession No.

AF361350). Oligonucleotide probes were labeled with [³³P]dATP using terminal deoxyribonucleotidyl transferase (Invitrogen, Carlsbad, CA).

In situ hybridization

Under deep pentobarbital anesthesia, the brains were freshly obtained from C57BL/6J mice at embryonic days 13 (E13), E18, postnatal days 1 (P1), P7, P14, P21, and adult (4 months). The day after overnight mating was designated as E0, and the day of birth as P1. Fresh frozen sections (20 µm thickness) were cut with a cryostat (CM1900, Leica, Nussloch, Germany) and mounted on glass slides precoated with 3-aminopropyltriethoxysilane. Probe labeling and hybridization were performed as described (Fukaya *et al.*, 2005) with minor modifications. Sections were treated at room temperature with the following incubation steps: fixation with 4% paraformaldehyde-0.1M sodium phosphate buffer (pH 7.2) for 10 min, 2mg/ml glycine-phosphate-buffered saline (pH 7.2) for 10 min, acetylation with 0.25% acetic anhydride in 0.1 M triethanolamine-HCl (pH 8.0) for 10 min, and prehybridization for 1 hr in a buffer containing 50% formamide, 50 mM Tris-HCl (pH 7.5), 0.02% Ficoll, 0.02% polyvinylpyrrolidone, 0.02% bovine serum albumin, 0.6 M NaCl, 0.25% SDS, 200 µg/ml tRNA, 1 mM EDTA, and 10% dextran sulfate. Hybridization was performed at 42 °C for 12 hr in the prehybridization buffer supplemented with 10,000 cpm/µl of [³³P]dATP-labeled oligonucleotides. Slides were washed twice at 55 °C for 40 min in 0.1 x SSC containing 0.1% sarcosyl. Sections were exposed either to BioMax (Kodak, Rochester, NY) or to Nuclear Track emulsion (NTB-2, Kodak) for 4 weeks. Emulsion-dipped sections were Nissl-stained with methyl green pyronine solution.

Results

In situ hybridization was employed to reveal the spatiotemporal expression patterns of each VDCC γ subunit mRNA in the mouse brain using radiolabeled antisense oligonucleotide probes. Overall distribution was examined by X-ray film macroautoradiography (Fig. 1), while detailed regional and cellular expression was determined by emulsion microautoradiography (Fig. 2, 3). The specificity of hybridizing signals was verified by the disappearance of signals when hybridization was carried out in the presence of a 100-fold excess amount of unlabeled oligonucleotides (Fig. 1A-H insets).

Distribution in adult mouse brain

Regional and cellular expressions in the cerebral cortex, hippocampus, and cerebellum are mainly described in the text, and expressions in other regions are summarized in Table 1.

γ 1 subunit. No significant signals for the γ 1 subunit mRNA were detected in any regions of the adult brain (Fig. 1A, 2A, 2I, 2Q).

γ 2 subunit. The γ 2 subunit mRNA was detected at high levels in various grey matter regions (Fig 1B). The highest expression was found in the cerebellar cortex, where the γ 2 subunit mRNA was expressed strongly in Purkinje cells and granule cells, and moderately in the molecular layer neurons (basket and stellate cells) and deep cerebellar nuclei (Fig. 2R, 3M). In the cerebral cortex, the γ 2 subunit mRNA was distributed in layers II-VI (Fig. 2B). In the hippocampus, it was detected strongly in pyramidal cell layer of the CA3 region and

granule cell layer of the dentate gyrus, and weakly in CA1 pyramidal cell layer (Fig. 1B, 2J, 3A, 3G). Intense signals were also detected in neurons of polymorphic layer of the dentate gyrus and interneurons dispersed in the CA1 region (Fig. 2J, 3A, 3G).

$\gamma 3$ subunit. Hybridization signals for the $\gamma 3$ subunit mRNA were predominantly detected in the telencephalon, including the olfactory bulb, cerebral cortex, hippocampus, striatum, septum, and amygdala (Fig. 1C). In the hippocampus, the $\gamma 3$ subunit mRNA was intense in CA1 pyramidal cell layer, moderate in CA3 pyramidal cell layer and granule cell layer of the dentate gyrus, and very low in the CA2 region (Fig. 2K, 3B, 3H). Expression was low in lower brain regions, including the cerebellum (Fig. 1C). Emulsion microautoradiography revealed the presence of dispersed signal clusters in the cerebellum, which originated from large cells dispersed in the granular layer, i.e., Golgi cells, an interneuron in the granular layer (Fig. 2S, 3N).

$\gamma 4$ subunit. Hybridization signals for the $\gamma 4$ subunit mRNA were found in various brain regions with higher levels in the olfactory bulb, striatum, thalamus, and hypothalamus (Fig. 1D). In these regions, signals were detected in major cellular populations. For example, most cells were labeled in thalamic nuclei. In other regions, the $\gamma 4$ subunit mRNA was expressed in limited cellular populations, which were poorly labeled with Nissl staining and distributed irrespective of the grey and white matters (Fig. 2D, 2L, 2T, 3C, 3I). Moreover, laminar patterns of signal distribution were obscure in the cerebral cortex and hippocampus, suggesting its expression in non-neuronal cells. In the cerebellum, high levels of the $\gamma 4$ subunit mRNA were detected in the Purkinje cell layer (Fig. 2T), where it was detected in Bergmann glia, but not in Purkinje cells (Fig. 3O).

$\gamma 5$ subunit. The $\gamma 5$ subunit mRNA was detected highly in the olfactory bulb, CA2 region of the hippocampus, thalamus, and cerebellum, and moderately in the septum and inferior colliculus (Fig. 1E). In the hippocampal CA2 region, signals for the $\gamma 5$ subunit mRNA were detected over pyramidal cells, (Fig. 2M, 3D). In the cerebellum, the $\gamma 5$ subunit mRNA was selectively expressed in Bergmann glia (Fig. 2U, 3P).

$\gamma 6$ subunit. Hybridization signals for the $\gamma 6$ subunit mRNA were very low in the adult brain, showing faint labeling in some telencephalic structures, such as the olfactory bulb and hippocampus (Fig. 1F, 2F, 2N, 2V).

$\gamma 7$ subunit. The $\gamma 7$ subunit mRNA was prominently expressed in various grey matter regions (Fig. 1G). In the cerebral cortex, moderate levels were observed in the layers II-VI (Fig. 2G). In the hippocampus, levels were higher in the CA2 region and dentate gyrus than in the CA1 and CA3 regions (Fig. 2O, 3E, 3K). In the cerebellum, the $\gamma 7$ subunit mRNA was high in Purkinje cells, and also detected in other neurons, including granule cells, molecular layer interneurons, and neurons in the deep cerebellar nuclei (Fig. 2W, 3Q).

$\gamma 8$ subunit. The $\gamma 8$ subunit mRNA was highly enriched in the telencephalon with the highest levels in all hippocampal regions (Fig. 1H, 2P, 3F, 3L). In the cerebral cortex, levels were higher in the layers II/III and V than the layers IV and VI (Fig. 2H).

Developmental changes

Developmental changes were examined from E13 to P21 (Fig. 4). VDCC γ subunits that were expressed highly in the adult brain (i.e., $\gamma 2-5$, $\gamma 7$, $\gamma 8$) also exhibited high expression in embryonic brains. Of these, several subunits showed generally preserved patterns of spatial

expression throughout development. Higher expression of the $\gamma 2$ subunit mRNA in the cerebellum (Fig. 4B), wide expression of the $\gamma 7$ subunit mRNA in the brain (Fig. 4G), and higher expression of the $\gamma 8$ subunit mRNA in the telencephalon (Fig. 4H) were all noted from embryonic and neonatal stages, and continued to the adult stage. In addition, higher expression of the $\gamma 5$ subunit mRNA in the olfactory bulb, thalamus, inferior colliculus, and cerebellar cortex was observed from perinatal stages (Fig. 4E). On the other hand, the $\gamma 4$ subunit mRNA was very strong throughout brains until P7, and the adult type of expression was established by thereafter downregulation in the grey matter, except for olfactory bulb, striatum, and thalamus (Fig. 4D). On the contrary, higher expression of the $\gamma 3$ subunit mRNA in the telencephalon became apparent at P7 and thereafter (Fig. 4C).

Faint signals for the $\gamma 1$ subunit mRNA was transiently detected in the telencephalon at E18 and P1 (Fig. 4A). At P7, low signals for $\gamma 6$ subunit mRNA first appeared in the olfactory bulb, cerebral cortex, and hippocampus, which was maintained until the adult stage (Fig. 4F). In contrast to generally low expression in the brain, the $\gamma 1$ and $\gamma 6$ subunit mRNAs were clearly detected in the skeletal muscle (arrows in Fig. 4A, F).

Discussion

In the present study, we examined expression patterns for the VDCC γ subunit family in developing and adult mouse brains by *in situ* hybridization, and have disclosed their distinct regional and cellular expression as summarized in Table 1.

The TARP family, which consists of $\gamma 2$, $\gamma 3$, $\gamma 4$, and $\gamma 8$ subunits, was originally reported to participate in surface expression, synaptic targeting and recycling of AMPA receptors (Chen *et al.*, 2000; Tomita *et al.*, 2003, 2004). Recently, we and others have found that TARPs not only modulate AMPA receptor trafficking but also regulate their channel activities working as auxiliary subunits (Yamazaki *et al.*, 2004; Priel *et al.*, 2005; Tomita *et al.*, 2005). Therefore, the TARP family, presumably other VDCC γ subunits as well, play diverse roles as ion channel modulators. Distinct regional expressions of the TARP-VDCC γ subunits in the present study are well consistent with previous reports (Chen *et al.*, 2000; Klugbauer *et al.*, 2000; Tomita *et al.*, 2003). In general, major subunits in given brain regions are $\gamma 2$, $\gamma 3$, and $\gamma 8$ subunits in the telencephalon, $\gamma 2$ and $\gamma 4$ subunits in the diencephalon, and $\gamma 2$ subunit in other regions, including the cerebellum. Within the cerebellum, we have disclosed here distinct cellular expression: $\gamma 2$ subunit in Purkinje cells, granule cells and molecular layer interneurons, $\gamma 3$ subunit in Golgi cells, and $\gamma 4$ subunit in Bergmann glia. The distinct cellular expression agrees with reported phenotypes in the *stargazer* mouse, a spontaneous mutant defective in the $\gamma 2$ subunit (Letts *et al.*, 1998). In the *stargazer* cerebellum, AMPA receptor-mediated fast responses are almost missing and AMPA receptor subunits are greatly reduced at mossy fiber-granule cell synapses (Hashimoto *et al.*, 1999; Chen *et al.*, 1999, 2000). On the other hand, AMPA receptors at hippocampal pyramidal cell synapses are intact in the *stargazer* mouse (Hashimoto *et al.*, 1999). Based on our present results, this different phenotype can be interpreted that the $\gamma 2$ subunit is the sole subunit of the TARPs expressed in cerebellar granule cells, whereas it is one of the subunits expressed in hippocampal pyramidal cells. In particular, the $\gamma 8$ subunit is expressed most prominently in the hippocampus, and thus may compensate

the loss of $\gamma 2$ subunit function in the *stargazer* (Fig. 1H and 2P in the present study; Tomita et al., 2003). If this is also true for other neurons, AMPA receptor function and localization might be greatly affected at synapses in cerebellar Purkinje cells and brainstem motoneurons of the *stargazer*, in which the $\gamma 2$ subunit is predominantly expressed, like cerebellar granule cells. Since Ca^{2+} -permeable AMPA receptors expressed in Bergmann glia have been shown to play an important role in glial enwrapping of Purkinje cell synapses (Iino et al., 2001), the $\gamma 4$ subunit may also control transmission at Purkinje cell synapses through regulating the glial AMPA receptors.

Regional and cellular distributions of mRNAs for non-TARP-VDCC γ subunits ($\gamma 1$, $\gamma 5$, $\gamma 6$, and $\gamma 7$ subunits) are also differential in the brain. Of these, the $\gamma 1$, $\gamma 5$ and $\gamma 7$ subunits are known to regulate function and localization of VDCC complex (Wei et al., 1991; Eberst et al., 1997; Klugbauer et al., 2000; Moss et al., 2002). Although the $\gamma 1$ and $\gamma 6$ subunit mRNA are expressed in skeletal muscles (Fig. 4A, 4F; Powers et al., 1993), they are negative or showed low restricted expression in the adult brain, suggesting little or limited contribution to brain function. Transient expression of the $\gamma 1$ subunit mRNA in newborn telencephalon implies its transient involvement in brain development. In contrast, the $\gamma 7$ subunit mRNA is expressed highly and widely in developing and adult brains, suggesting that it is a major regulator for VDCCs in the brain. From the expression in particular neural regions, such as hippocampal CA2 region and Bergmann glia, the $\gamma 5$ subunit may play some additional role in these regions. Functional assignment of the $\gamma 6$ subunit remains unknown, and its expression in the brain is low throughout development.

The VDCC γ subunit family is thus diverse not only in molecular forms and function,

but also in their spatial expression in the brain. The present mapping study on the VDCC γ subunits will provide the molecular-anatomical basis for future studies.

Acknowledgement

This investigation was supported by Grants-in-Aid for Scientific Research (A, B) (MW), for Scientific Research on Priority Areas (MW), and for Young Scientists (B) (MF) provided by the Ministry of Education, Culture, Sports, Science and Technology of Japan.

References

Black JL III (2003) The voltage-gated calcium channel gamma subunits: a review of the literature. *J Bioenerg Biomembr* 35:649-660.

Black JL III, Lennon VA (1999) Identification and cloning of putative human neuronal voltage-gated calcium channel gamma-2 and gamma-3 subunits: neurologic implications. *Mayo Clin Proc* 74:357-361.

Bosse E, Regulla S, Biel M, Ruth P, Meyer HE, Flockerzi V, Hofmann F (1990) The cDNA and deduced amino acid sequence of the gamma subunit of the L-type calcium channel from rabbit skeletal muscle. *FEBS Lett* 267:153-156.

Burgess DL, Davis CF, Gefrides LA, Noebels JL (1999) Identification of three novel Ca²⁺ channel gamma subunit genes reveals molecular diversification by tandem and chromosome duplication. *Genome Res* 9:1204-1213.

Burgess DL, Gefrides LA, Foreman PJ, Noebels JL (2001) A Cluster of Three Novel Ca²⁺ Channel gamma Subunit Genes on Chromosome 19q13.4: Evolution and Expression Profile of the gamma Subunit Gene Family. *Genomics* 71:339-350.

Chen L, Bao S, Qiao X, Thompson RF (1999) Impaired cerebellar synapse maturation in waggler, a mutant mouse with a disrupted neuronal calcium channel gamma subunit. *Proc*

Natl Acad Sci U S A 96:12132-12137.

Chen L, Chetkovich DM, Petralia RS, Sweeney NT, Kawasaki Y, Wenthold RJ, Brecht DS, Nicoll RA (2000) Stargazin regulates synaptic targeting of AMPA receptors by two distinct mechanisms. *Nature* 408:936-943.

Chu PJ, Robertson HM, Best PM (2001) Calcium channel gamma subunits provide insights into the evolution of this gene family. *Gene* 280:37-48.

Eberst R, Dai S, Klugbauer N, Hofmann F (1997) Identification and functional characterization of a calcium channel gamma subunit. *Pflugers Arch* 433:633-637.

Freise D, Held B, Wissenbach U, Pfeifer A, Trost C, Himmerkus N, Schweig U, Freichel M, Biel M, Hofmann F, Hoth M, Flockerzi V (2000) Absence of the gamma subunit of the skeletal muscle dihydropyridine receptor increases L-type Ca²⁺ currents and alters channel inactivation properties. *J Biol Chem* 275:14476-14481.

Fukaya M, Hayashi Y, Watanabe M (2005) NR2 to NR3B subunit switchover of NMDA receptors in early postnatal motoneurons. *Eur J Neurosci* 21:1432-1436.

Green PJ, Warre R, Hayes PD, McNaughton NC, Medhurst AD, Pangalos M, Duckworth DM, Randall AD (2001) Kinetic modification of the $\alpha 1I$ subunit-mediated T-type Ca²⁺ channel by

a human neuronal Ca²⁺ channel gamma subunit. *J Physiol* 533:467-478.

Hashimoto K, Fukaya M, Qiao X, Sakimura K, Watanabe M, Kano M (1999) Impairment of AMPA receptor function in cerebellar granule cells of ataxic mutant mouse stargazer. *J Neurosci* 19:6027-6036.

Held B, Freise D, Freichel M, Hoth M, Flockerzi V (2002) Skeletal muscle L-type Ca²⁺ current modulation in gamma1-deficient and wildtype murine myotubes by the gamma1 subunit and cAMP. *J Physiol* 539:459-468.

Iino M, Goto K, Kakegawa W, Okado H, Sudo M, Ishiuchi S, Miwa A, Takayasu Y, Saito I, Tsuzuki K, Ozawa S (2001) Glia-synapse interaction through Ca²⁺-permeable AMPA receptors in Bergmann glia. *Science* 292:926-929.

Jay SD, Ellis SB, McCue AF, Williams ME, Vedvick TS, Harpold MM, Campbell KP (1990) Primary structure of the gamma subunit of the DHP-sensitive calcium channel from skeletal muscle. *Science* 248:490-492.

Klugbauer N, Dai S, Specht V, Lacinova L, Marais E, Bohn G, Hofmann F (2000) A family of gamma-like calcium channel subunits. *FEBS Lett* 470:189-197.

Letts VA, Felix R, Biddlecome GH, Arikath J, Mahaffey CL, Valenzuela A, Bartlett FS II,

Mori Y, Campbell KP, Frankel WN (1998) The mouse stargazer gene encodes a neuronal Ca²⁺-channel gamma subunit. *Nat Genet* 19:340-347.

Moss FJ, Viard P, Davies A, Bertaso F, Page KM, Graham A, Canti C, Plumpton M, Plumpton C, Clare JJ, Dolphin AC (2002) The novel product of a five-exon stargazin-related gene abolishes Ca_v2.2 calcium channel expression. *Embo J* 21:1514-1523.

Powers PA, Liu S, Hogan K, Gregg RG (1993) Molecular characterization of the gene encoding the gamma subunit of the human skeletal muscle 1,4-dihydropyridine-sensitive Ca²⁺ channel (CACNLG), cDNA sequence, gene structure, and chromosomal location. *J Biol Chem* 268:9275-9279.

Priel A, Kollerker A, Ayalon G, Gillor M, Osten P, Stern-Bach Y (2005) Stargazin reduces desensitization and slows deactivation of the AMPA-type glutamate receptors. *J Neurosci* 25:2682-2686.

Rousset M, Cens T, Restituto S, Barrere C, Black JL III, McEnery MW, Charnet P (2001) Functional roles of gamma2, gamma3 and gamma4, three new Ca²⁺ channel subunits, in P/Q-type Ca²⁺ channel expressed in *Xenopus* oocytes. *J Physiol* 532:583-593.

Tomita S, Chen L, Kawasaki Y, Petralia RS, Wenthold RJ, Nicoll RA, Brecht DS (2003) Functional studies and distribution define a family of transmembrane AMPA receptor

regulatory proteins. *J Cell Biol* 161:805-816.

Tomita S, Fukata M, Nicoll RA, Brecht DS (2004) Dynamic interaction of stargazin-like TARPs with cycling AMPA receptors at synapses. *Science* 303:1508-1511.

Tomita S, Adesnik H, Sekiguchi M, Zhang W, Wada K, Howe JR, Nicoll RA, Brecht DS (2005) Stargazin modulates AMPA receptor gating and trafficking by distinct domains. *Nature* 435: 1052-1058.

Wei XY, Perez-Reyes E, Lacerda AE, Schuster G, Brown AM, Birnbaumer L (1991) Heterologous regulation of the cardiac Ca²⁺ channel α 1 subunit by skeletal muscle β and γ subunits. Implications for the structure of cardiac L-type Ca²⁺ channels. *J Biol Chem* 266:21943-21947.

Yamazaki M, Ohno-Shosaku T, Fukaya M, Kano M, Watanabe M, Sakimura K (2004) A novel action of stargazin as an enhancer of AMPA receptor activity. *Neurosci Res* 50:369-374.

Legends

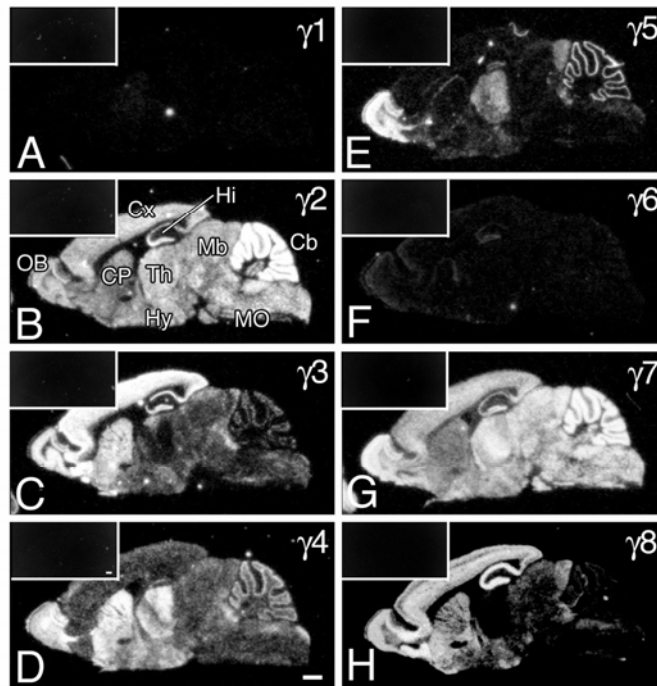
Figure 1. Distribution of VDCC γ 1 (A), γ 2 (B), γ 3 (C), γ 4 (D), γ 5 (E), γ 6 (F), γ 7 (G), and γ 8 (H) subunit mRNAs in the adult mouse brain. Images were made from parasagittal brain sections exposed to an X-ray film. Insets show negative hybridizing signals by adding unlabeled probes. Cb, cerebellum; CP, caudate-putamen; Cx, cerebral cortex; Hi, hippocampus; Hy, hypothalamus; Mb, midbrain; MO, medulla oblongata; OB, olfactory bulb; Th, thalamus. Scale bars, 1mm.

Figure 2. Distribution of VDCC γ 1 (A, I, Q), γ 2 (B, J, R), γ 3 (C, K, S), γ 4 (D, L, T), γ 5 (E, M, U), γ 6 (F, N, V), γ 7 (G, O, W), and γ 8 (H, P, X) subunit mRNAs in the adult cerebral cortex (A-H), hippocampus (I-P), and cerebellum (Q-X). Images were made from emulsion-dipped sections. CA1-3, CA1-3 regions of the hippocampus; CC, corpus callosum; CP, caudate-putamen; DCN, deep cerebellar nuclei; DG, dentate gyrus; GL, granular rayer; I-VI, layer I-VI of the cerebral cortex; ML, molecular layer; PL, Purkinje cell layer; Su, subiculum. Scale bars, 500 μ m in A and I; 1 mm in Q.

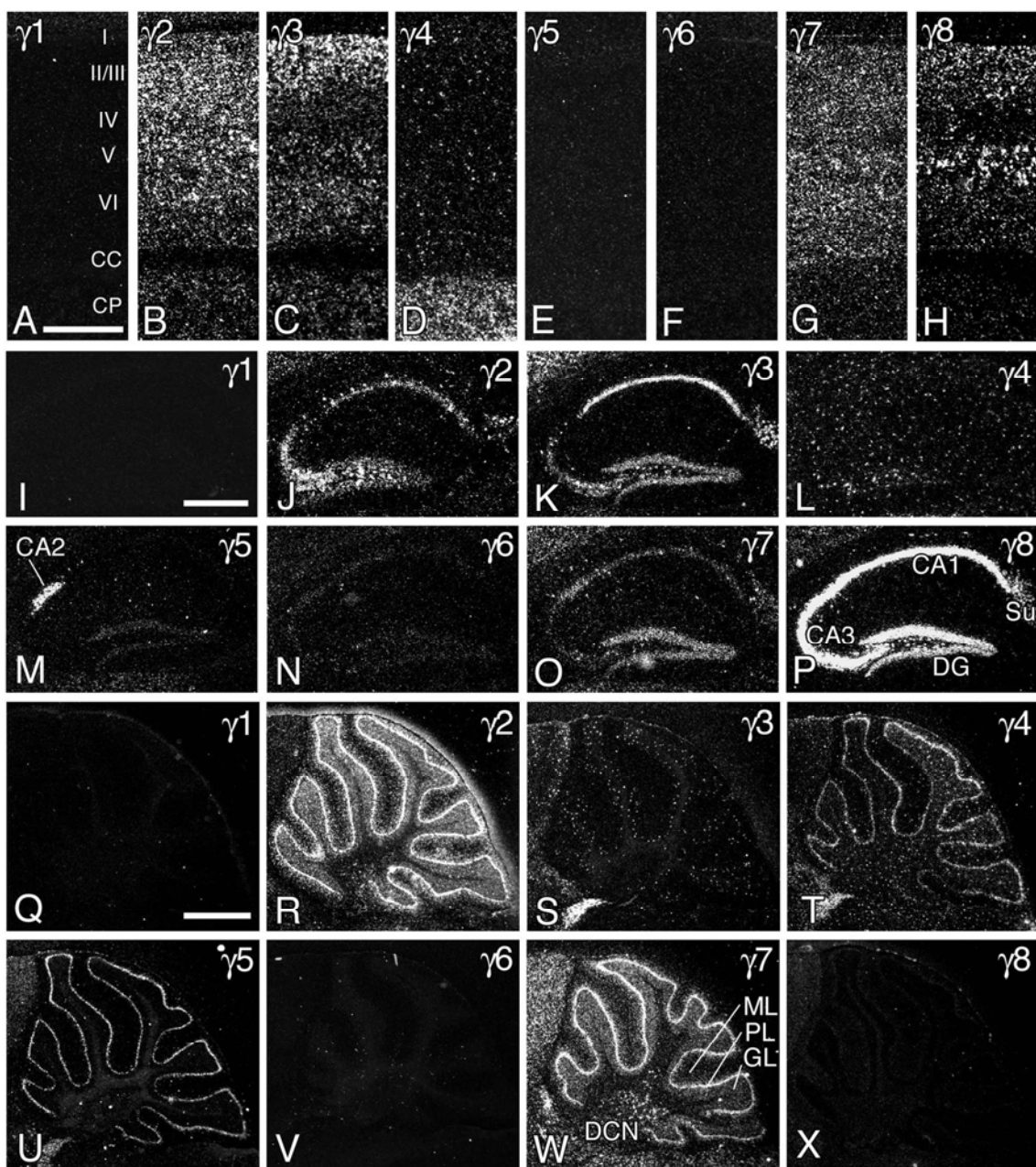
Figure 3. Bright-field micrographs showing VDCC γ 2 (A, G, M), γ 3 (B, H, N), γ 4 (C, I, O), γ 5 (D, J, P), γ 7 (E, K, Q), and γ 8 (F, L, R) subunit mRNAs in the adult hippocampal CA1 or CA2 region (A-F), dentate gyrus (G-L), and cerebellar cortex (M-R). No significant signals for the γ 1 and γ 6 subunit mRNAs were detected in emulsion-dipped sections. White arrowheads in C and I indicate γ 4 mRNA-positive glial cells. Black and white arrows in M-R indicate the cell body of Purkinje cells and Bergmann glia, respectively. Double arrows in N

indicate a Golgi cell. CA1 and CA2, CA1 and CA2 regions of the hippocampus; Cb, cerebellum; DG, dentate gyrus; Gr, granular layer; Mo, molecular layer; Or, stratum oriens; Po, polymorphic layer; Py, pyramidal cell layer; Ra, stratum radiatum. Scale bars, 20 μ m.

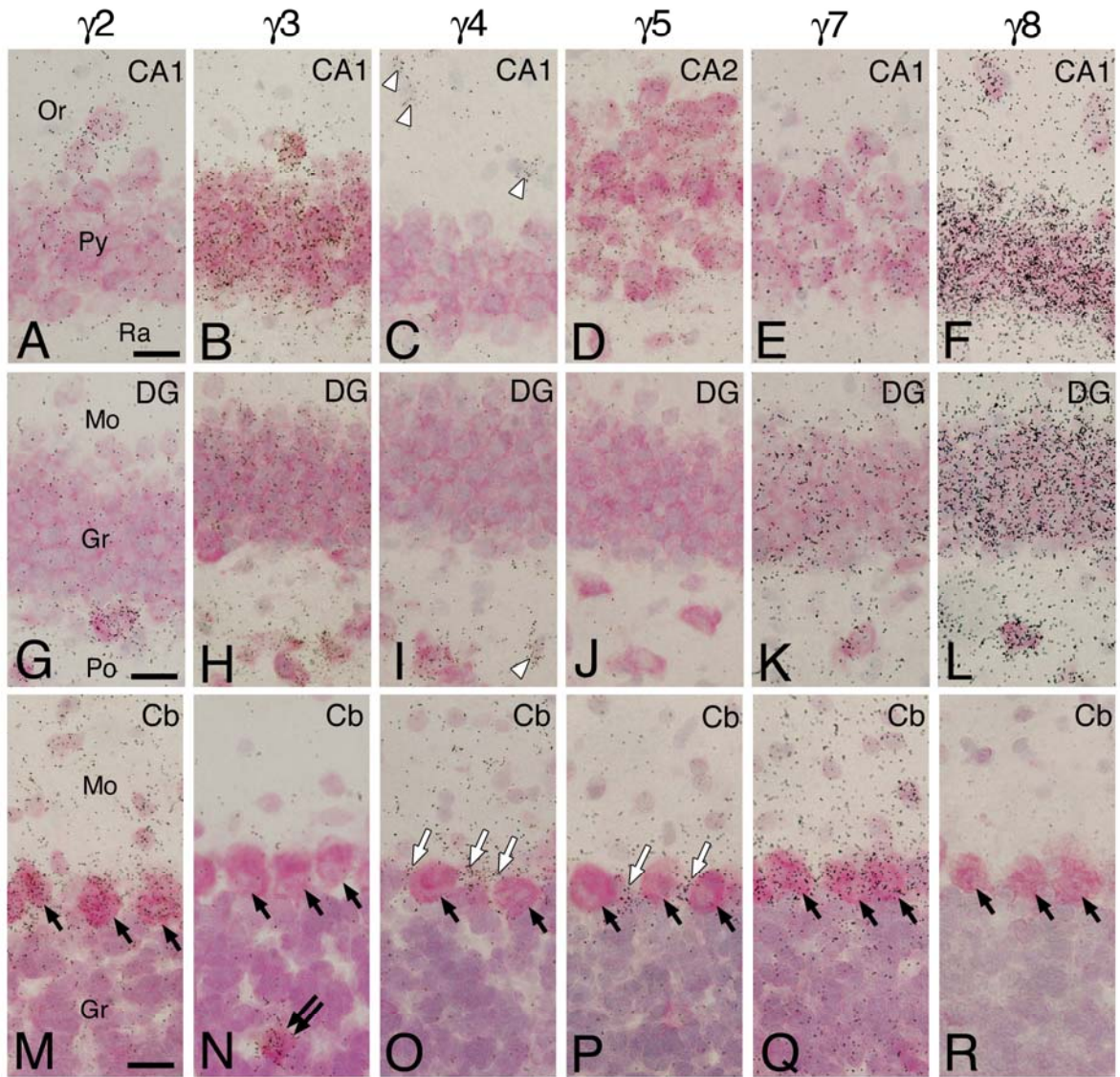
Figure 4. Developmental changes in expressions for VDCC γ 1 (A), γ 2 (B), γ 3 (C), γ 4 (D), γ 5 (E), γ 6 (F), γ 7 (G), and γ 8 (H) mRNAs in mouse brains from E13 to P21. Each set of hybridized sections was exposed to a single X-ray film. Arrows indicate expression of γ 1 and γ 2 mRNAs in the skeletal muscles. Scale bar, 1 mm.



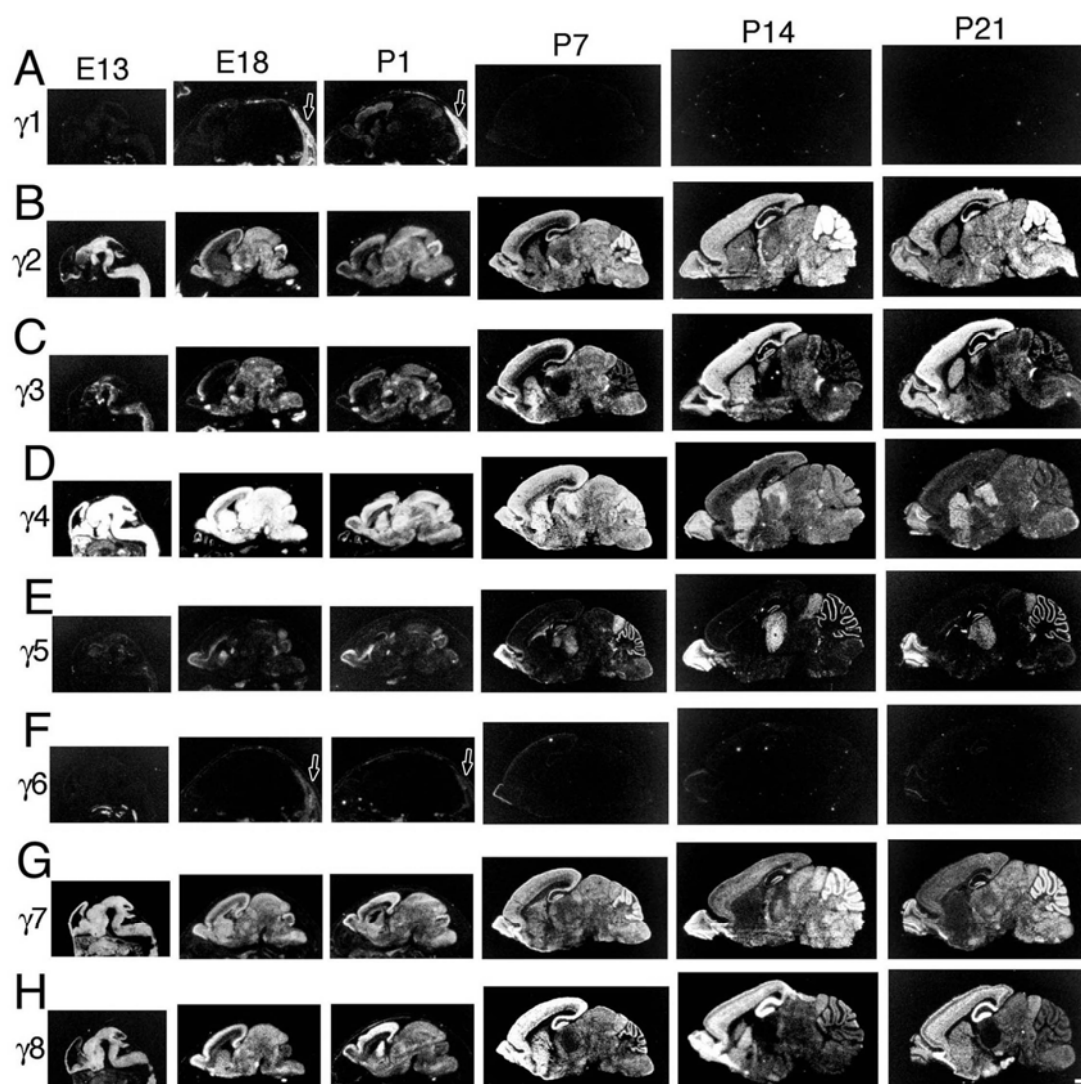
Fukaya *et al.*
Figure 1



Fukaya *et al.*
Figure 2



Fukaya *et al.*
Figure 3



Fukaya *et al.*
Figure 4

Table 1. Relative abundance*¹ of VDCC γ subunit mRNAs in adult mouse brain

	γ 1	γ 2	γ 3	γ 4	γ 5	γ 6	γ 7	γ 8
Olfactory bulb								
Mitral cell layer	-	1	1	1	4	2	4	1
Granule cell layer	-	3	4	4	4	2	4	4
Glomerular layer	-	3	1	4	4	2	4	3
Cerebral cortex								
Layer I	-	1	-	2	-	-	-	-
Layer II/III	-	3	4	2	-	1	3	4
Layer IV	-	3	3	2	-	-	3	2
Layer V	-	3	4	2	-	-	3	4
Layer VI	-	3	4	2	-	-	3	3
Hippocampus								
CA1 (pyramidal cells)	-	2	4	2	-	1	3	5
CA2 (pyramidal cells)	-	1	1	2	5	1	3	5
CA3 (pyramidal cells)	-	4	3	2	-	1	3	5
Dentate gyrus (granule cells)	-	4	3	2	2	2	3	5
Interneurons	-	3	3	-	-	-	3	4
Subiculum	-	3	3	2	-	1	3	5
Striatum								
Caudate-putamen	-	3	4	4	-	-	2	4
Globus pallidus	-	3	4	4	-	-	2	4
Septum	-	3	3	3	4	-	2	4
Amygdala	-	3	3	3	3	-	3	4
Corpus callosum	-	-	-	2	-	-	-	-
Thalamus	-	4	2	4	4	-	4	1
Hypothalamus	-	4	3	4	2	-	4	3
Superior colliculus	-	4	2	2	1	-	4	2
Inferior colliculus	-	4	2	2	3	-	4	4
Substantia nigra	-	3	2	2	-	-	3	2
Precerebellar nuclei								
Pontine nuclei	-	3	1	2	-	-	4	1
Reticulotegmental nucleus	-	3	1	2	-	-	4	1
Lateral reticular nucleus	-	3	1	1	-	-	4	1
Inferior olive	-	2	2	1	-	-	4	1
Motor nuclei* ²		-	4	1	1	1	-	4
1								
Trigeminal nucleus (sensory)	-	2	1	1	-	-	4	1
Cochlear nucleus (dorsal)	-	3	1	1	1	-	4	1
Cerebellum								
Purkinje cells	-	5	-	-	-	-	5	-
Granule cells	-	5	1	1	-	-	4	-
Stellate/Basket	-	3	4	3	-	-	3	-
Bergmann glia	-	-	-	4	4	-	-	-
Deep cerebellar nuclei	-	3	1	1	-	-	4	-

*¹ Relative expression levels were estimated by visual comparison using both X-ray film autoradiograms and emulsion-dipped sections. -, not detected; 1, very low; 2, low; 3, moderate; 4, high; 5, very high. *² Trigeminal motor nucleus, facial nucleus, and hypoglossal nucleus.