



HOKKAIDO UNIVERSITY

Title	Two new Lycaenid-butterflies from Korea and Formosa
Author(s)	Matsumura, Shonen
Citation	Insecta matsumurana, 12(2-3), 107-108
Issue Date	1938-03
Doc URL	https://hdl.handle.net/2115/9377
Type	departmental bulletin paper
File Information	12(2-3)_p107-108.pdf



TWO NEW LYCAENID-BUTTERFLIES FROM KOREA AND FORMOSA

By

SHONEN MATSUMURA

(松村松年)

(With two Textfigures)

Rapala tetsuzana n. sp.

Closely allied to *R. nissa* KOLL., but differs from the latter in the following characters:

♂. Upperside: The bluish colour extends all over the hind wing except the costa; the reddish patch in the anal lobe with some bluish scales.

Underside: Yellowish brown, the marginal two brownish bands of the fore wing close each other near the tornus, the inner band being defined exteriorly by white colour as on that of the hind wing; the w-shaped marking near the cauda higher, at the base of the anal lobe with a white patch, in the interspace 1^c at the distal end fuscous, dusted with white scales; the tail slenderer, nearly half the length of the 2nd vein; the reddish yellow patch at the inner side of the black patch in the 2nd interspace much broader.

Exp.—30 mm.

Hab.—Korea. One male specimen was collected in July, 1937, at Mt. Tetsuzan by Mr. S. HIRAYAMA.

Rapala sankakuhonis n. sp.

Closely allied to *R. repercussa* LEECH from China, but differs from it as follows:

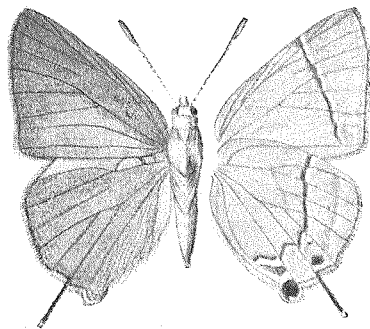


Fig. 1

Rapala tetsuzana n. sp. (♂) × 2

♂. Wings dark blue, the underside darker. On the upperside of the hind wing the anal lobe tipped with white fringe, with a bluish patch and a reddish brown one. On the underside of the fore wing a band situated on the outer third, being narrower and nearly parallel to the termen. On the underside of the hind wing the inner one of the double white-bands obsolete, fading, nearly extending from the middle to the costa, and the interspace with an obsolete

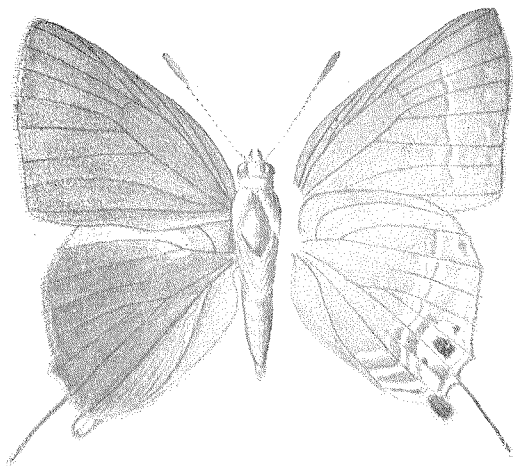


Fig. 2

Rafala sankakuhoensis n. sp. (♂) × 2

reddish band; the abbreviated discocellulars distinct; the bluish marking above the anal lobe bright blue, the anal black patch at the 2nd interspace more broadly encircled with bright red. The tail black, at the tip white, more than half the length of the 2nd vein.

Exp.—40 mm.

Hab.—Formosa. One male specimen was collected at Sankakuho in July, 1937, by Mr. S. HIRAYAMA.