



Title	Descriptions of a new and a rare Species of the Japanese Ciid-Beetles
Author(s)	Chujo, Michio
Citation	Insecta matsumurana, 14(4), 132-133
Issue Date	1940-06
Doc URL	<a href="https://hdl.handle.net/2115/9447">https://hdl.handle.net/2115/9447</a>
Type	departmental bulletin paper
File Information	14(4)_p132-133.pdf



# DESCRIPTIONS OF A NEW AND A RARE SPECIES OF THE JAPANESE CIID-BEETLES

By

MICHIO CHÛJÔ

(中條道夫)

“Entomological Laboratory, Taihoku Imperial University, Taiwan”

(With 2 Text-figures)

## *Cis (Eridaulus) kônoi* sp. nov.

Cylindrical, parallel-sided, body above nearly glabrous, but extremely fine greyish or pale yellowish pubescence may be seen under a high power lens, and body beneath closely clothed with pale yellowish pubescence as usual; reddish brown, and strongly shining.

Head finely shagreened, rather closely and evenly punctured. Antennae 10-segmented, with 3rd segment much longer than 4th, three terminal segments strongly expanded and rather loosely articulated to each other. Pronotum transverse, a little narrowed in front, front margin strongly rounded with a weak emargination in its middle, front angles obtusely angulated, lateral margins distinctly rounded and narrowly ridged, basal angles rounded, basal margin distinctly ridged with its median portion straight; dorsum strongly convex, minutely shagreened, closely and evenly punctured. Scutellum small, subtriangular, and roughly punctured. Elytra parallel-sided, strongly convex, closely and irregularly punctured, size of the punctures uneven, and interspaces of the punctures rather rugous partially. Body beneath closely punctured.

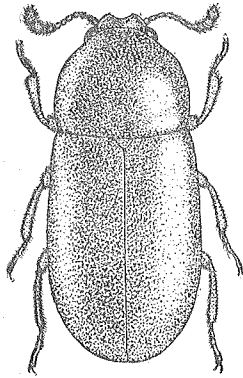


Fig. 1

*Cis (Eridaulus) kônoi*  
CHÛJÔ, sp. nov.

♂: Frons flat, with an obtuse impression in the middle of its top; clypeus strongly reflexed, with its front margin deeply emarginate and both ends of the emargination strongly angulated; pronotum with a weak longitudinal impression in the middle of its anterior portion; first abdominal segment with a very small pubescent-pore in its middle. Length—2.0 mm.

Holotype—Horo, Saghalien (1 ♂, 18. VIII. 1937, H. KÔNO leg.).

This new species is closely allied to *Cis (Eridaulus) jacquemarti* MELLIÉ and its var. *glabratus* MELLIÉ, both from Europe and Caucasus, but may be distinguished from the latter by the following characters: Body rather larger; pronotum with the front margin emarginate at its middle, a longitudinal impression in the middle of its anterior portion, the front angles obtusely angulated; elytra with the interspaces of punctures rather rugous partially.

***Rhopalodontus harmandi* LESNE**

*Rhopalodontus Harmandi* LESNE, Bull. Soc. Ent. France, p. 191 (1917) (Japan: Tôkyô-Distr.).

*Rhopalodontus harmandi* CHÛJÔ, Mushi, XII, 1, p. 9 (1939) (Honsyû); *ibid.*, Fauna Nipponica, X, viii, 13, Col. Ciidae, pp. 47 & 56 (1939) (Japan: Honsyû).

Cylindrical, slightly widened posteriorly, body above rather closely clothed with long and soft hairs, but body beneath yellowish pubescent as usual; yellowish brown to reddish brown, with antennae (three terminal segments excepted), palpi and legs more or less paler than others.

Head finely shagreened, finely but not closely punctured, frons with a small fovea in its centre, clypeus with its median portion produced anteriorly in a subquadrate lobe. Antennae 10-segmented, with 3rd segment nearly equal to 4th, from 5th to 7th very short and transverse, three terminal segments strongly expanded and rather loosely articulated to each other. Pronotum a little wider than long, narrowed anteriorly, front margin strongly rounded, front angles obtuse, lateral margins distinctly rounded and narrowly ridged, basal corners widely rounded, basal margin slightly rounded; dorsum strongly convex, side margins invisible from above, finely shagreened strongly and evenly punctured. Scutellum small, subtriangular, minutely shagreened, with a few fine punctures. Elytra slightly widened posteriorly, strongly convex, humeri slightly raised, very strongly and closely punctured. Body beneath minutely shagreened, finely but not closely punctured.

♂: First abdominal segment with a large subtriangular pore in its centre.

Length—1.7–1.8 mm.

Specimens examined—4 Exs., Nopporo, Hokkaido, Japan (7. V. 1938, H. KÔNO leg.).

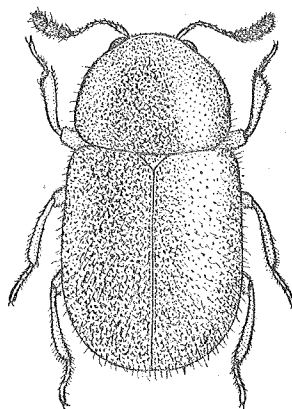


Fig. 2

*Rhopalodontus harmandi* LESNE