



Title	A new genus of Syrphidae, <i>Matsumyia</i>
Author(s)	Shiraki, Tokuichi
Citation	<i>Insecta matsumurana</i> , 17(1), 1-3
Issue Date	1949-07
Doc URL	<a href="https://hdl.handle.net/2115/9498">https://hdl.handle.net/2115/9498</a>
Type	departmental bulletin paper
File Information	17(1)_p1-3.pdf



# INSECTA MATSUMURANA

VOL. 17

July, 1949

No. 1

## A NEW GENUS OF SYRPHIDAE, *MATSUMYIA*

By TOKUICHI SHIRAKI

Tokyo, Japan

### *Matsumyia* gen. nov.

The new genus *Matsumyia* may be one of the intermediate forms between *Cynorrhina* WILLISTON and *Penthesilea* MEIGEN, and differs from the former in the frons haired and dusted, the mesonotum covered with a dense erect pubescence, and the hind femora in male conspicuously thickened; from the latter in the eyes continuous shortly and the abdomen covered with a fine appressed pubescence.

Body robust. Eyes continuous in a short distance; frons densely dusted, with short frontal process; face strongly hollowed below the antennae and then quite produced forwards the frontal process, the median callus being small but rather prominent. Mesonotum covered with a rather short erect pubescence, scutellum and pleurae furnished with long hairs. Abdomen relatively elongate, densely covered with a very fine appressed pubescence. Hind femora of male strongly thickened and furnished with a short rather stout setae, hind tibiae faintly curved. Small cross-vein, r-m, quite sloping and situated after two-thirds of the cell  $M_2$ .

Genotype: *Priomerus jesoensis* MATSUMURA.

In Japan there are found the two following species :

Face pale yellow; in male the face roundly and slightly produced below, the hind femora strongly thickened; in female the mesonotum without any longitudinal stripe.....  
.....*jesoensis* MATSUMURA

Face black; in male the face conspicuously produced below, the hind femora less thickened; in female the mesonotum with two pairs of faint dull longitudinal stripes...*nigrofacies* sp. nov.

### 1. *Matsumyia jesoensis* MATSUMURA

*Priomerus jesoensis* MATSUMURA, Journ. Coll. Agr. Sapporo, IV, I, p. 78, 1911.

*Cynorrhina ferdinandi* HERVE-BAZIN, Ann. Soc. Ent. Fr. LXXXIII, p. 407, figs 8-10.  
1914.

*Cynorrhina jesoensis* SHIRAKI, Mem. Fac. Sci. & Agr. Taihoku Imp. Univ. p. 59, 1930

*Cynorrhina jesoensis* SACK, Syrphidae (Fl. pl. Reg.), p. 365, 1932.

Until the present time it has been only known to us the male.

♀. Frons moderately broadened forwards, the upper portion being about one-seventh as wide as head, dirty yellow, along the eye-margins yellow-dusted, entirely covered with a yellow erect pubescence, with a median pale brown longitudinal line; frontal process more or less short and small than in male; vertex parallel-sided, almost entirely occupied by ocellar triangle excepting the narrow yellow-dusted orbits; ocellar triangle slightly longer than wide, brownish, furnished with more or less long yellow hairs and the minute ocelli. Face bare, dirty yellow and shining, about the upper portion there is a very few short pubescence, the orbits yellow-dusted very narrowly, below the median callus nearly perpendicularly straight. Cheeks colored as in the face, the lower margin obliquely straight, just below the eye there is a nearly triangular blackish brown portion. Hind surface of head more inflated than in male, the black bristles on the upper portion being irregularly developed. Pubescence and dust on the mesonotum more dense than in the male, without longitudinal stripes. Abdomen almost evenly pubescent and dusted, without any transversal patches as in male, the apical tergite being mostly covered with black hairs. Hind femora slightly thickened.

Length: 18—20 mm.

Hab. Towada (VII), Chuzenji (VII), Jozankei (VII).

## 2. *Matsumyia nigrofacies* sp. nov.

Allied to the preceding species, but it is easily distinguished by the black head, the two pairs of dull longitudinal stripes

of mesonotum (♀), and the rather narrow hind femora.

♂. Frons more small than in *jesoensis*, with very short frontal process. Face black, covered with a greyish white dust excepting a median longitudinal stripe from the median callus to the mouth edge, very slightly concave below the median callus and then slightly obliquely produced below. Cheeks strongly shining, deep black, just below the eye there is a rather distinct somewhat triangular grey-dusted portion which extends very narrowly up to the middle of face along the eye-margin. Hind surface of head covered with a yellowish grey dust and a yellow pubescence which becomes longer below; the upper portion with a row of rather distinct black bristles behind the eye-margin. Antennae yellowish brown; first joint darker and longer than the second; third joint about two-thirds as long as high, with the lower margin strongly rounded and the upper margin very slightly; arista relatively fine, just before the middle of

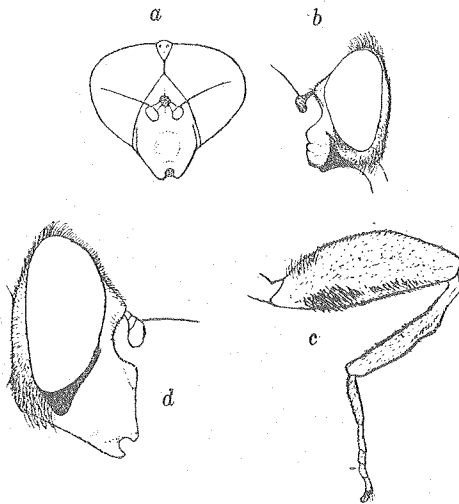


Fig. 1. *Matsumyia jesoensis* MATSUMURA

a & b. Head (♂). c. Hind leg (♂).

d. Head (♀).

upper margin of third antennal joint, black with the basal half pale. Mesonotum slightly longer than broad, covered with a yellowish grey dust and brownish yellow erect hairs, with two pairs of dull colored longitudinal stripes, of which the median pair is narrower and placed near each other, extending from the anterior margin nearly to the posterior margin, the lateral pair is broader, extending from the posterior margin to just behind the interior corner of humeral callus. Scutellum covered with a yellowish grey dust and orange yellow longer hairs; pleurac covered with a yellowish white dust, and furnished with a yellowish white longer pubescence about the median portion. Abdomen slightly longer than head and thorax united together, black, with a yellowish grey-dusted transverse band near the middle of each the second and third tergites; first tergite covered with a yellowish grey dust about one third hind area; fourth tergite strongly shining; vestiture yellowish grey, short, appressed, but on the hind half of fourth tergite almost black and sloping. Second tergite with pale yellow lateral marginal spots, which are furnished with yellow very long hairs. Venter of abdomen black; first sternite pale brown and grey-dusted; the second palened laterally and browned along the posterior margin; vestiture of first two sternites pale and long, of the following two very short and black; hypopygidium strongly shining deep black, furnished with black hairs. Legs black, with knees yellowish brown, two anterior tibiae and tarsi more or less brownish, hind tibiae and tarsi very slightly brownish; femora moderately thick, front and intermediate ones furnished with long hairs on dorso-external surface, hind femora with a few long hairs on basal dorsum, the remaining portions furnished with black short ones. Claws pale reddish yellow, with black tips; pulvilli pale yellow. Wings slightly smoked at apical portion and narrow median area; r-m slightly S-shaped, sloping, at two-thirds of M2. Squamae pale brown, yellowish fringed; halteres pale yellowish brown, with the stalk very long and slender.

♀. Vertex about one ninth as wide as head, parallel-sided, almost entirely represented by the ocellar triangle left very narrow eye-margins, yellow pubescent. Frons moderately broadened forwards, dull black, furnished with a yellow erect pubescence, the orbits distinctly covered with a dirty yellow dust; frontal process shining black, very short. Face entirely deep black, more narrowed downwards; cheeks colored as in face, but just below eye there is a dull colored triangular portion which very narrowly extends up to the middle of face along the eye-margin, the facial orbits furnished with a very few black minute pubescence. Thorax and abdomen as in male, but vestiture of abdomen much denser and black hairs on fourth tergite less abundant. Legs especially femora narrower, vestiture of hind femora longer.

Length; 15-18 mm.

One male and one female from Kamikochi (VII), Nagano-Prefecture, and one female from Mt. Daisetsu (VIII), Hokkaido; preserved in the author's collection.

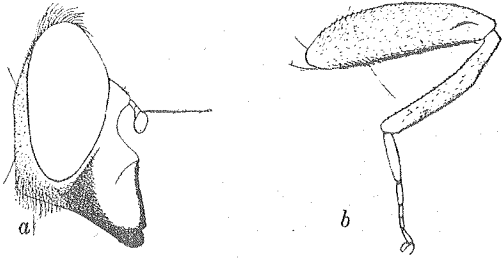


Fig. 2. *Matsumiya nigrofacies* SHIRAKI  
a. Head (♂). b. Hind leg (♂).