



HOKKAIDO UNIVERSITY

Title	Description of a new species of <i>Acleris</i> Huebner and notes on synonymy (Notes on Tortricidae of Japan, 1) (Lepidoptera)
Author(s)	Oku, Toshio
Citation	<i>Insecta matsumurana</i> , 21(1-2), 74-76
Issue Date	1957-08
Doc URL	https://hdl.handle.net/2115/9615
Type	departmental bulletin paper
File Information	21(1-2)_p74-76.pdf



DESCRIPTION OF A NEW SPECIES OF *ACLERIS*
HUEBNER WITH NOTES ON SYNONYMY

(Notes on Tortricidae of Japan, I)

(Lepidoptera)

By TOSHIO OKU

Sapporo, Japan

In this paper will be described a new species of the genus *Acleris* HUEBNER occurring in Japan; besides the synonymy of two species of the genus *Archips* HUEBNER will be discussed herewith.

The writer greatly obliged to Prof. Dr. T. UCHIDA and Prof. Dr. C. WATANABE of Hokkaido University for their constant encouragement and guidance. His hearty thanks are also due to Prof. Dr. S. ISSIKI and Mr. T. YASUDA of Osaka Prefectural University for their kind suggestions and help in various ways, and to Mr. J. D. BRADLEY and Mr. D. S. FLETCHER of the British Museum for their helpful advice.

Acleris issikii sp. nov.

Acleris quadridentana OKU (nec WALSINGHAM), Ins. Mats., 20 (3-4): 114, figs. 1-2 (1956).

♂♀, 16-20 mm. Antennae brownish grey, mixed with brown, paler beneath. Head and palpi clothed with brownish-grey scales which are whitish at extreme apex; palpi mixed with brownish scales, whitish internally, with apical joint exposed. Thorax brownish-grey or dark grey, with a strong crest, which becomes brownish towards tip. Abdomen silvery grey, faintly tinged with brown; anal tuft ochreous.

Fore wings moderate; costa moderately arched from base to obtuse dentation before middle, thence slightly excavated to vein 9, where projecting scales form the second dentation, beyond which costa is depressed towards apex. Colour grey or brownish-grey, with pearly gloss in ground, more or less tinged with lilac-blue usually, in some specimens much tinged with ochreous and showing reddish-golden reflection in certain lights; faint dark greyish strigulae scattered around; costa margined with brown and marked at the excavation with 3 narrow creamy white patches, the first present just beyond the inner dentation of costa but is often much reduced, the second at beyond middle of costa and often connecting with the first, the third at before vein 9; all costal patches edged dorsally with deep brown; several transverse striae deep brown; the first running obliquely outwards, gradually bent inwards about subdorsal fold and reaching to

before 1/3 of dorsum; the second from about the first costal dentation to before 2/3 of dorsum and bulging outwards; the third from about the second costal patch to before tornus; and the rest obscure and interrupted. Dorsum edged with brown or ochreous (indistinct in old specimens); cilia pale grey, paler towards tip, often tipped with brownish on apical half; subbasal shade dark grey.

Hind wings brownish-grey; cilia very pale brownish-grey, with a narrow pale ochreous basal line and a dark grey subbasal line.

Male genitalia:—Top of tegumen rounded; socii erected, long and slender; fultura superior present. Valva strong; sacculus clefted at 4/5 from base, set with two heavily chitinized spines at angulated apex; brachiola moderate. Aedoeagus arched, with a small projection at top; cornuti absent.

Female genitalia:—Papillae anales long, very narrow, a little curved. Limen broad, with a pair of slender lateral lobes which are tapering towards obtuse apex; caudal margin of limen projecting at middle. Corpus bursae rather small, with a signum of irregular dentate plate.

Holotype: ♂, Sapporo, Hokkaido (VI 24, 1955) bred by T. OKU.

Allotype: ♀, Sapporo, Hokkaido (VI 15, 1956) bred by T. OKU.

Paratypes: Sapporo, Hokkaido, 6 ♂♂ (IX 17, 1917; IX 27, 1918; X 9, 1931) S. MATSUMURA leg., 1 ♂ (IX 22, 1954) T. KUMATA leg., 2 ♂♂, 3 ♀♀ (VI 18-28, VII 1, X 30, 1955) T. OKU leg.; Ōnuma, Hokkaido, 1 ♀ (X 17, 1955) S. TAKAGI leg.; Iwate Pref., Honshū, 1 ♀ (X 28, 1949) M. OKANO leg., 2 ♂♂ (VI 17-19, 1956) T. OKU leg.; 4 ♂♂, 2 ♀♀, Shigakōgen, Honshū (IX 20-25, 1955) T. YASUDA leg.

The types are deposited in the collection of the Entomological Institute, Hokkaido University, except a male and a female paratypes which are in the British Museum.

Host plants: *Populus nigra* var. *italica* MUENCHH. and *P. Sieboldii* MIQ.

Notes: This species, which was erroneously treated as *A. quadridentana* (WALSINGHAM) by the writer (1956), is named in honour of Dr. S. ISSIKI. According to Mr. BRADLEY, the present species seems to be fairly closely related to *A. quadridentana* from China, but is quite distinct superficially from the latter by the following characters of the fore wings.

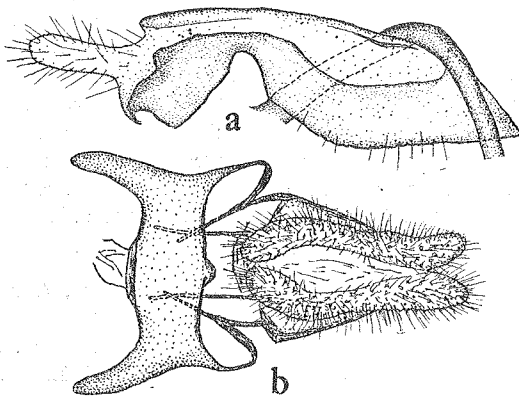


Fig. 1. *Acleris issiki* sp. nov.

- a. Ventral view of valva.
- b. Ventral view of female genitalia (bursa copulatrix omitted).

A. quadridentata

1. Apex rather obtuse.
2. Indentations of costa much pronounced.
3. Dorsum dark grey.
4. General colouration light brown.

A. issikii

- Apex acute.
 Indentations of costa small or much reduced.
 Dorsum brown or ochreous.
 General colouration greyish.

Archips adumbratana WALSINGHAM

Archips adumbratanus WALSINGHAM, Ann. Mag. Nat. Hist., VII, 5: 382 (1900).

Cacoecia sorbiana MATSUMURA (nec HUEBNER), 6000 Ill. Ins. Jap.: 1066, No. 2121 (1931).

Cacoecia teshionis MATSUMURA, ibid.: 1066, No. 2122 (1931). **Syn. nov.**

Specimens examined: Many specimens from Hokkaido and Honshū.

Habitat: Japan (Hokkaido and Honshū).

Notes: Having examined the unique type of *C. teshionis*, the writer has come to the conclusion that it is apparently a male of *A. adumbratana*, being distinguishable merely by the faded fasciae and the bright brown terminal line of the fore wings. By the longer and narrower costal fold in the male and the uninterrupted central fasciae of the fore wings in the female, *A. adumbratana* is distinguished from *A. sorbiana* with which it has hitherto often been confused.

Archips fuscocupreana WALSINGHAM

Archips fuscocupreanus WALSINGHAM, Ann. Mag. Nat. Hist., VII, 5: 384 (1900).

Lozotenia Ishidaii MATSUMURA, Ent. Nachr., 26: 194 (1900).

Cacoecia ishidaii MATSUMURA, 6000 Ill. Ins. Jap.: 1065, No. 2166 (1931).

Cacoecia punicae MATSUMURA, ibid.: 1065, No. 2119 (1931). **Syn. nov.**

Cacoecia fuscocupreana KODAMA, Publ. Ent. Inst. Osaka Pref. Univ., 2: 3 (1956).

Specimens examined: Many specimens from Hokkaido and Honshū.

Habitat: Japan (Hokkaido, Honshū, Kyushū).

Notes: This species is much variable in colour. Judging from the original description of *A. fuscocupreana*, the types from Kyushū may belong to the darker form. The type specimen of *C. punicae* from Tokyo is also a darker female of this species. It had been pointed out by KODAMA (1956) that specimens of *L. Ishidaii* from Hokkaido belong to the paler form of *A. fuscocupreana*. It seems certain that in Hokkaido the paler form is common while the darker form is very rare.