



# HOKKAIDO UNIVERSITY

Title	A new genus and a new species of Toriminae (Hymenoptera : Chalcidoidea)
Author(s)	Kamijo, Kazuaki
Citation	Insecta matsumurana, 24(1), 66-68
Issue Date	1961-03
Doc URL	<a href="https://hdl.handle.net/2115/9673">https://hdl.handle.net/2115/9673</a>
Type	departmental bulletin paper
File Information	24(1)_p66-68.pdf



# A NEW GENUS AND A NEW SPECIES OF TORYMINAE

(HYMENOPTERA: CHALCIDOIDEA)

By KAZUAKI KAMIJO

Entomological Institute, Faculty of Agriculture,  
Hokkaido University, Sapporo

## *Lissotorymus*, gen. nov.

Eyes virtually bare; occiput margined; clypeus weakly raised, trapeziform, with anterior margin slightly produced, truncate; mandibles with three teeth. Antennae inserted slightly below middle of face, thirteen-segmented (11173); pedicel about as long as first funicle segment; flagellum nearly filiform.

Pronotum normal, about 1.5 times as wide as long; dorsum of pronotum and mesonotum mainly wrinkled, without punctures; scutellum with frenal furrow distinct. Propodeum with strong, longitudinal carinae; spiracles long-oval, separated by less than their own length from posterior margin of metanotum. Prosternum without a distinct median furrow; prepectus with a sharply delimited triangular area before tegula. Posterior margin of hind coxa very sharply margined throughout; lower margin of hind femur smooth. Fore wing with speculum well developed; costal cell wide; postmarginal vein about one-fourth length of marginal.

Gaster subsessile. In female, third tergite extremely deeply incised at apex; fourth tergite long, occupying half length of gaster; following tergites usually concealed by fourth seen from above (fig. 1 & 2). In male, third tergite broadly and deeply incised; fourth tergite nearly occupying half length of gaster, but following tergites visible above (fig. 3).

Type species.—*Lissotorymus laevigatus*, sp. nov.

This genus is closely related to *Torymus* Dalman, from which it may be separated by the deeply incised third tergite and the long fourth tergite.

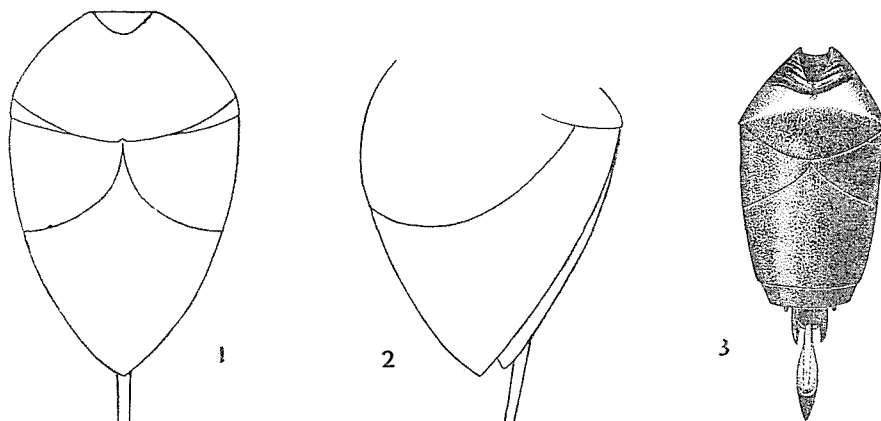
## *Lissotorymus laevigatus*, sp. nov.

Female. Length 2.3-2.9 mm. Head seen from above 2.2 times width of its median length, much wider than thorax, with temples sharply narrowed behind eyes. Vertex slightly convex, with ocellar area much raised, distinctly punctate, shining. Postocellar line four or five times as long as ocellular line, which is half to one-third as long as diameter of lateral ocellus. Occiput shallowly emarginate. Eyes much prominent, 1.3 times as long as wide; inner orbits fairly divergent below. Distance between centres of antennal toruli a little longer than that between one of them and adjacent eye. Malar space nearly one-third length of eye. Head seen in front 1.2 to 1.3 times as wide as

[Insecta Matsumurana, Vol. 24, No. 1, March, 1961]

high; genae narrowed towards mouth and almost straight in outline. Face flattened, covered with dense, long hairs. Two outer teeth of both mandibles large and acute, inner one small and obtuse. Antennal scrobe deep. Scape not reaching median ocellus, nearly as long as first three funicle segments combined; pedicel distinctly longer than wide, about as long as first funicle segment. Flagellum about as long as width of head; anellus small, a little wider than long; funicle segments about equal in length, first longer than wide, second quadrate or slightly wider than long, seventh wider than long (6:4); club a little shorter than scape, much longer than two preceding segments combined; first and second segments of club not oblique at apex. Sensillae rather numerous, disposed in one row upon each funicle segment.

Thorax nearly 1.9 times as long as wide, not strongly convex in lateral aspect. Pronotum 0.67 times as long as mesoscutum, subparallel-sided, strongly wrinkled, with anterior flange well developed. Mesoscutum transversely wrinkled, with hind margin



Figs. 1-3. *Lissotorymus laevigatus*, sp. nov.

1. Dorsal view of gaster of female.
2. Lateral view of gaster of female.
3. Dorsal view of gaster of male.

moderately sinuate. Posterior area of mesoscutum, axillae and scutellum indistinctly and feebly sculptured, polished. Notaulices moderate in depth. Scutellum weakly convex, as long as mesoscutum, much longer than wide (31:23), sharply narrowed anteriorly; frenum smooth, shining. Metanotum moderately overlapped by flange of scutellum. Prepectus with triangular area smooth; its upper margin about as long as tegula. Propodeum 0.38 times as long as scutellum, convex, with several strong, longitudinal carinae; spiracles large, separated by half their own length from posterior margin of metanotum. Legs slender. Hind leg: coxa stout, with posterior margin very sharply margined throughout; inner spur of hind tibia much longer than maximum width of tibia; basitarsus twice as long as second segment.

Wings hyaline. Fore wing: basal cell only with a few hairs basally, almost open below; upper surface of costal cell with a row of hairs which becomes double distally,

while lower surface with hairs anteriorly and distally; speculum well developed, rather broadly open below; relative length of  $sm:m:p:s$  as 57:39:10:5; stigma petiolate.

Gaster a little shorter than thorax. First tergite smooth, extending beyond apex of second, with hind margin weakly incised medially; third tergite nearly smooth dorsally, fourth alutaceous on anterior two-thirds, smooth posteriorly. Ovipositor sheath a little shorter than gaster.

Bluish green: scape brownish yellow; pedicel and flagellum blackish; tegulae brownish yellow. Legs pale brownish yellow: coxae concolorous with thorax; fore and middle femora dark brown in greater part, sometimes with metallic reflections; hind femora dark green with basal and apical tips yellowish brown; hind tibiae sometimes darker at middle.

Male. Length 2.1 mm. Eyes less prominent, with sparse and short hairs, separated by 1.1 times their own length; inner orbits subparallel. Ocellular line nearly as long as diameter of lateral ocellus. Scape equal to combined length of first and second funicle segments; pedicel a little shorter than first funicle segment; flagellum 1.2 times as long as width of head, stout, not increasing in width distally, covered with rather short, dense hairs; anellus thinner; first funicle segment about as long as wide, following segments wider than long. Gaster depressed; first tergite strongly extending beyond apex of second, smooth, not incised at apex, with several transverse rugae on anterior half area; third tergite smooth dorsally; fourth with hind margin straight.

Bluish green with a bronzy tinge on mesopleura and on pronotum, mesoscutum and scutellum medially. Scape dark green. Legs pale brownish yellow: coxae and hind femora dark green with a bronzy tinge; fore and middle femora, and hind tibiae darker in greater part, with feeble greenish reflections. Gaster bronzy with first tergite bluish green in greater part.

Holotype (♀).—Aizankei, Hokkaido, 23. VII. 1957, T. Kumata. Paratypes (4♀, 1♂).—Hokkaido: Sapporo, 1♀ 13. VII. 1915, S. Matsumura; Kotoni, Sapporo, 1♀ (head and gaster missing), 19. VII. 1915, T. Okuni; Esashi, Hiyama Prov., 1♀ 9. VII. 1958, K. Kamijo; Tomakomai, 1♂ 23. VI. 1959, K. Kamijo. Kyushu: Hikosan, 1♀ 20. V. 1959, K. Kamijo. Deposited in the collection of the Entomological Institute, Hokkaido University, Sapporo.

Host.—Unknown.

Distribution.—Japan (Hokkaido; Kyushu).

#### Acknowledgements

The author wishes gratefully to thank Prof. T. Uchida and Prof. C. Watanabe for their valuable advice and encouragement.