



Title	A new species of the genus <i>Toxares</i> Haliday from Japan (Hymenoptera : Aphidiidae)
Author(s)	Takada, Hajimu
Citation	<i>Insecta matsumurana</i> , 28(1), 17-18
Issue Date	1965-08
Doc URL	https://hdl.handle.net/2115/9726
Type	departmental bulletin paper
File Information	28(1)_p17-18.pdf



Plate II. Petiole of female. Fig. 10, *Pauesia abietis*; 11, *P. pini*; 12, *P. infulata*; 13, *P. soranumensis*; 14, *P. yezoensis*; 15, *P. laricis*; 16, *P. momicola*; 17, *P. inouyei*; 18, *P. salignae*; 19, *P. unilachni*.

Plate III. Propodeum of female. Fig. 20, *Pauesia salignae* (a, ante-median longitudinal carina; b, oblique carina; c, transverse carina; d, post-median longitudinal carina; e, lateral longitudinal carina); 21, *P. konoii*; 22, *P. nopporensis*; 23, *P. pini*; 24, *P. abietis*; 25, *P. inouyei*; 26, *P. infulata*; 27, *P. soranumensis*; 28, *P. yezoensis*; 29, *P. momicola*; 30, *P. laricis*; 31, *P. japonica*; 32, *P. unilachni*.

Plate IV. Fore wing of female. Fig. 33, *Pauesia inouyei* (An_1 , first abscissa of anal vein; An_2 , second abscissa of anal vein; B, basal vein; C_2 , second abscissa of cubitus; C_3 , third abscissa of cubitus; Co, costa; IC_2 , second intercubitus; M_1 , first abscissa of median; M_2 , second abscissa of median; Mc, metacarpus; N, nervulus; P, parallel vein; R_1 , first abscissa of radius; R_2 , second abscissa of radius; Rc, recurrent vein; SC, subcosta; St, stigma); 34, *P. nopporensis*; 35, *P. pini*; 36, *P. abietis*; 37, *P. infulata*; 38, *P. soranumensis*; 39, *P. japonica*; 40, *P. salignae*; 41, *P. unilachni*; 42, *P. yezoensis*; *P. konoii*.

Plate V. Fore wing of female (fig. 44-45); female genitalia (46-51). Fig. 44, *Pauesia momicola*; 45, *P. laricis*; 46, *P. konoii*; 47, *P. nopporensis*; 48, *P. pini*; 49, *P. infulata*; 50, *P. inouyei*; 51, *P. abietis*.

Plate VI. Female genitalia. Fig. 52, *Pauesia soranumensis*; 53, *P. yezoensis*; 54, *P. momicola*; 55, *P. salignae*; 56, *P. laricis*; 57, *P. japonica*; 58, *P. unilachni*.

A NEW SPECIES OF THE GENUS *TOXARES* HALIDAY FROM JAPAN (HYMENOPTERA : APHIDIIDAE)

By HAJIMU TAKADA

In the present paper is described a new species of the genus *Toxares* Haliday, which has hitherto been considered as a monotypic genus, being represented by *T. deltiger* Haliday from Europe. On this occasion I wish to express my sincere thanks to Mr. M. Shiga, the Entomological Laboratory of Kyushu University for his kindness in offering the valuable specimens.

Toxares shigai, sp. nov.

♀. Dark brown. Mouth parts, palpi, scapes, pedicels and first three flagellar segments yellowish brown; clypeus, 4th flagellar segment and prosternum somewhat pale. Abdomen brown; petiole, 5th and succeeding segments yellowish brown. Wings hyaline; stigma and veins brown. Legs yellowish brown.

Body 2.0 mm., antennae 1.5 mm. in length. Head transverse dorsally, broader than thorax at tegulae, smooth and shining, with moderate hairs; temples as long as dorsal length of an eye, rather parallel behind eyes. Ocelli oval; distance between posterior ocelli 2 times as long as the diameter. Face moderately haired, 2 times as broad as long and a little less than 2 times as long as frontal breadth of an eye; clypeus 2 times as broad as long; malar space one-fourth as broad as mandible at base. Antennae filiform, 17-jointed, becoming stouter towards apex, with dense hairs; 1st flagellar segment 4 times as long as broad and a little longer than the 2nd, and the 9th 2.5 times as long as broad and the apical 4 times so and more than 1.5 times as long as the preceding.

Thorax smooth and shining, with sparse hairs; notaulices obsolete, only at anterior one-third distinct and deep. Propodeum (fig. 1, A) smooth and shining, scatteredly haired medially and moderately laterally, completely areolated, with broad pentagonal areola just before petiole. Abdomen lanceolate, longer than head and thorax together; petiole (fig. 1, B) 3 times as long as broad at spiracles, 2.5 times at apex, longitudinally striate, flat as seen laterally, and excavated basally, with scattered hairs, the lateral margins being weakly bowed concavely to spiracular tubercles which are situated at basal one-third and from tubercles weakly bowed convexly towards apex; 2nd and succeeding tergites smooth and shining, with sparse hairs. Genitalia (fig. 1, D): ovipositor sheath trapezoid, becoming broader towards apex, weakly curved downwards, with dense hairs apically, the apex being trifoliate; 1st and 2nd valvulae strongly curved downwards. Wings (fig. 1, C): stigma narrow, 7 times as long as broad; 2nd abscissa of radius three-fourths as long as

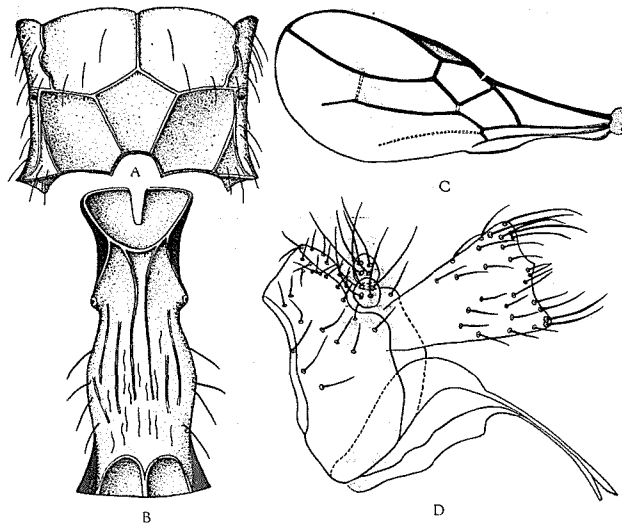


Fig. 1. *Toxares shigai*, sp. nov., female.

A, propodeum; B, petiole; C, fore wing; D, genitalia.

the 3rd and 1.7 times as long as 1st intercubitus; 2nd abscissa of cubitus 3 times as long as the 1st and 3.5 times as long as 2nd intercubitus which is obsolete.

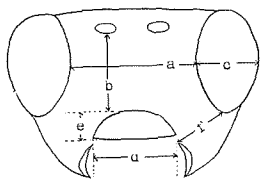
♂. Closely resembles the female, from which it differs in the following characters:— Body and legs darker in colour. Antennae 1.8 mm. in length, 20-jointed; 1st flagellar segment a little longer than the 2nd, 3 times as long as broad; 2nd and succeeding segments about equal in length, 2 times as long as broad. Body 1.9 mm. in length.

Holotype ♀ and paratype 1♂: 28-v-62, Kikuchi, Kumamoto-ken, Kyushu, M. Shiga leg. The types are deposited in the collection of the Entomological Laboratory of Kyushu University.

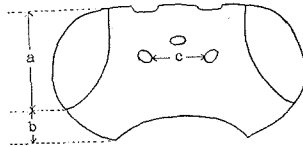
Hosts: Unknown.

Distribution: Japan (Kyushu).

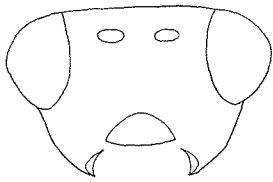
Judging from Stary's redescription of *Toxares deltiger* (Acta Faun. Ent. Mus. Nat. Pragae 3: 58-61, 1958), this species is easily distinguished from the latter by the following aspects:— (1) Petiole slenderer, 3 times as long as broad at spiracles. (2) Second abscissae of both radius and cubitus longer correlatively.



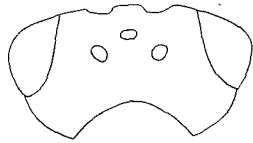
1



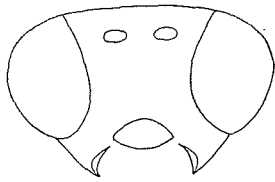
4



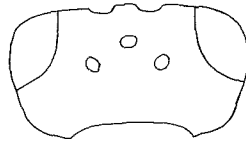
2



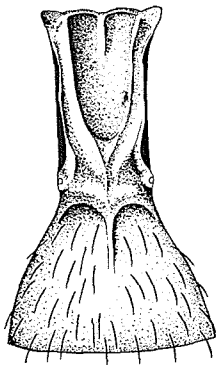
5



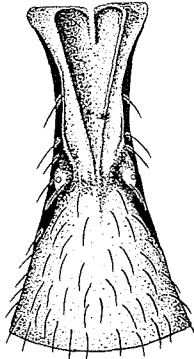
3



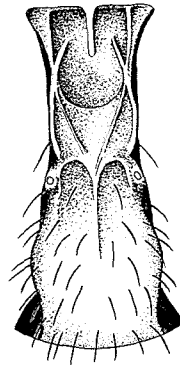
6



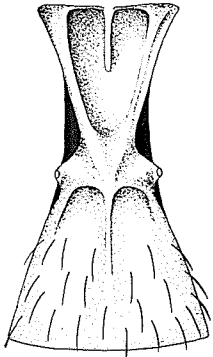
7



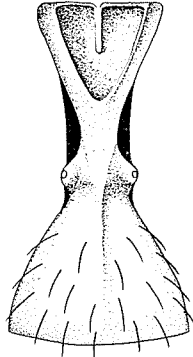
8



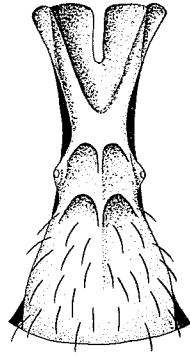
9



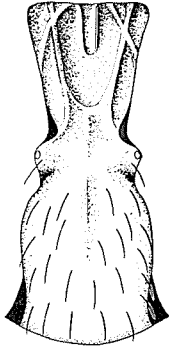
10



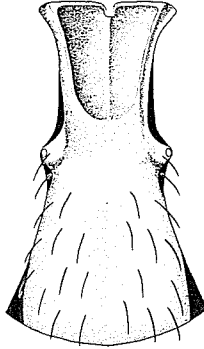
11



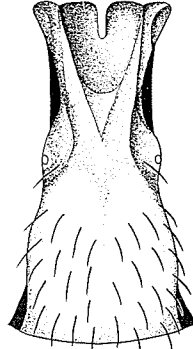
12



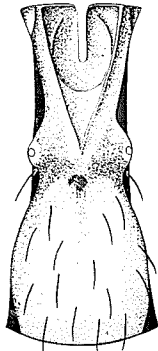
13



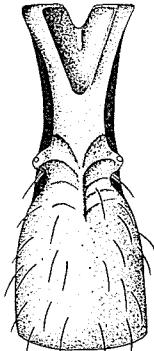
14



15



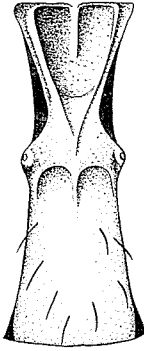
16



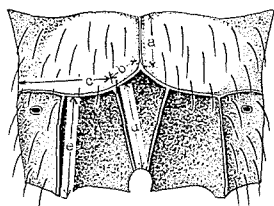
17



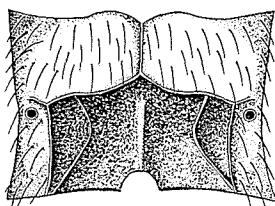
18



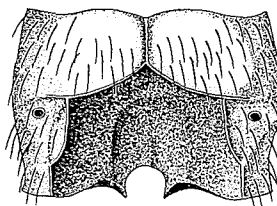
19



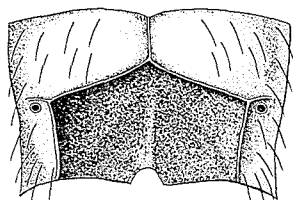
20



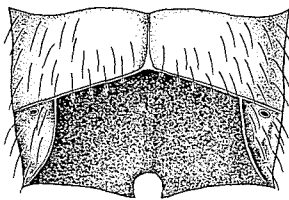
21



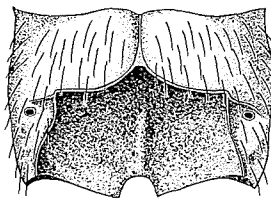
22



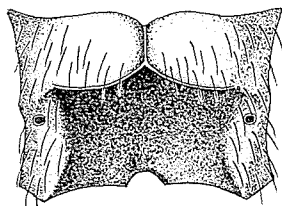
23



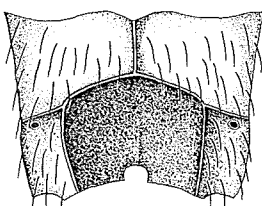
24



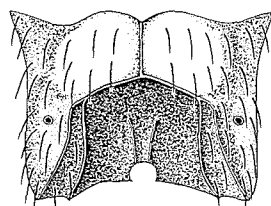
25



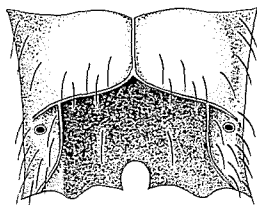
26



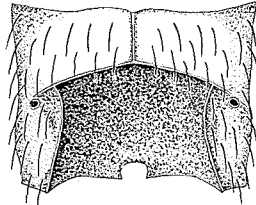
27



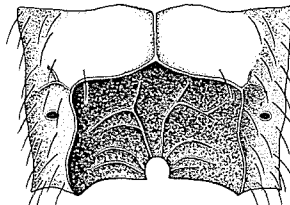
28



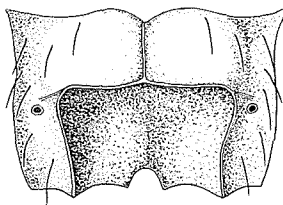
29



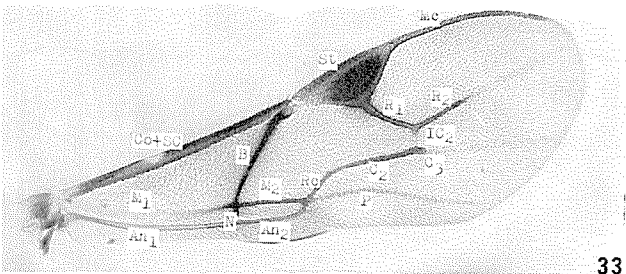
30



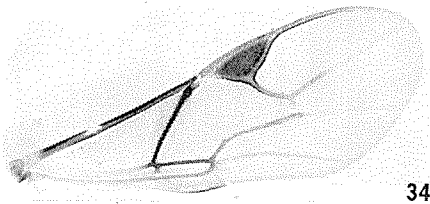
31



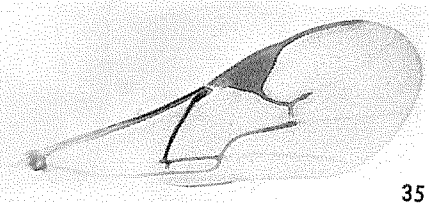
32



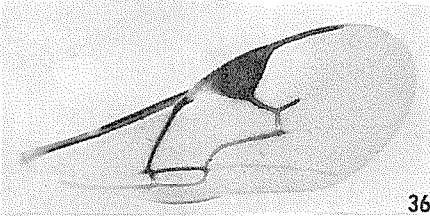
33



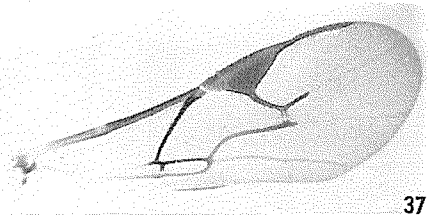
34



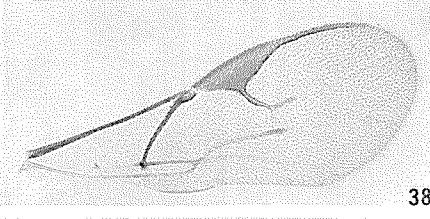
35



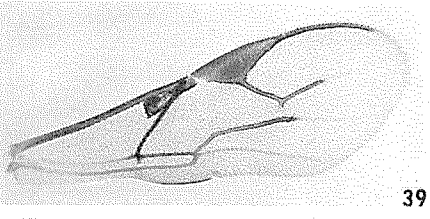
36



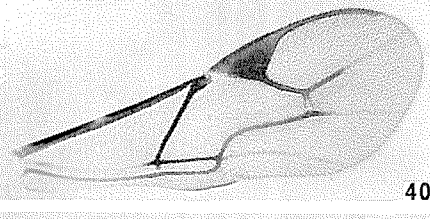
37



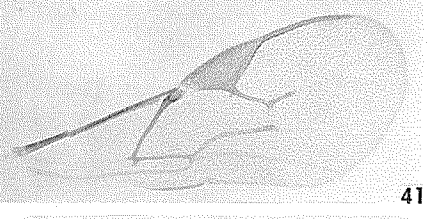
38



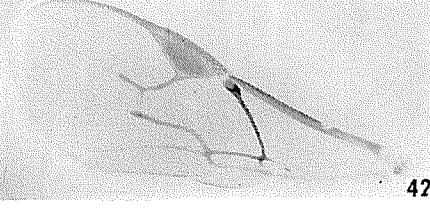
39



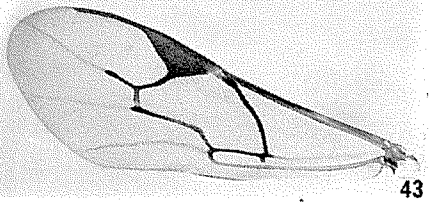
40



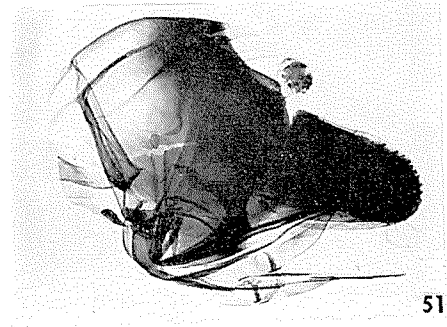
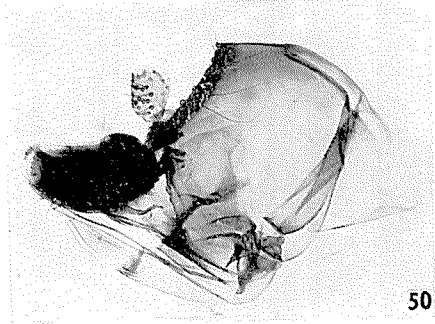
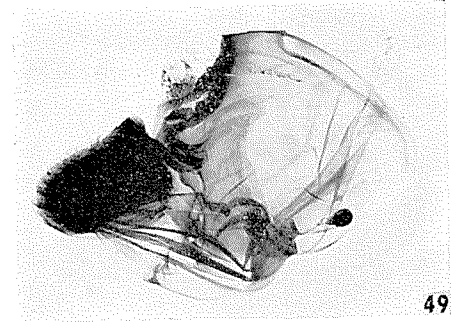
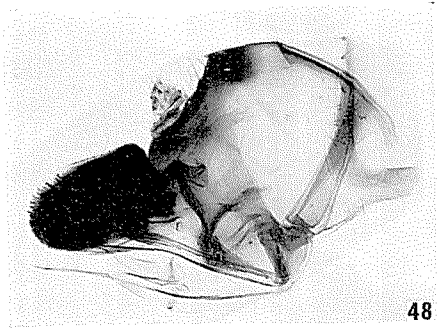
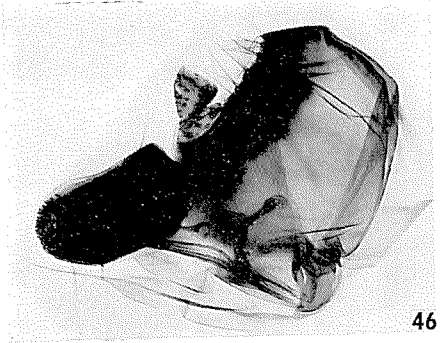
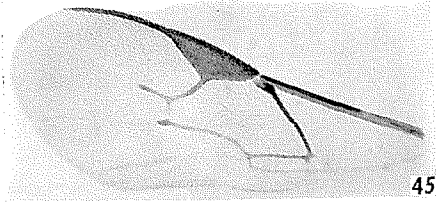
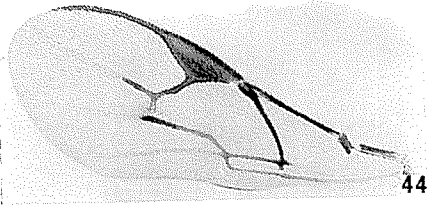
41

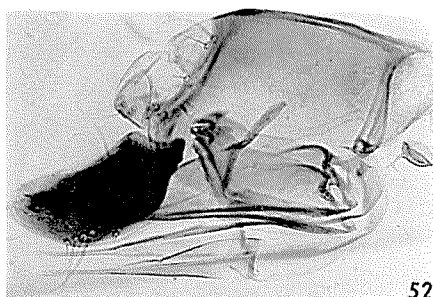


42

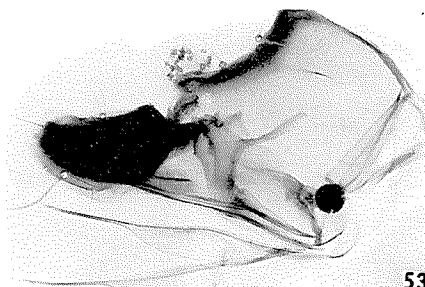


43

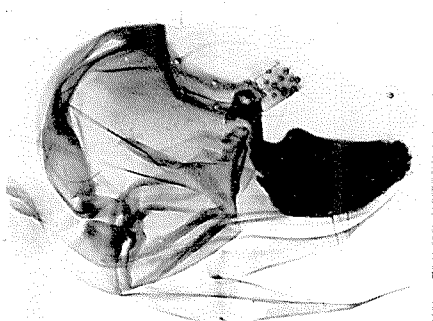




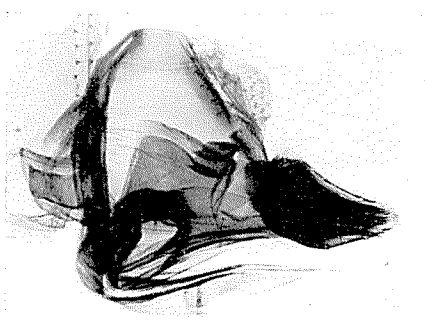
52



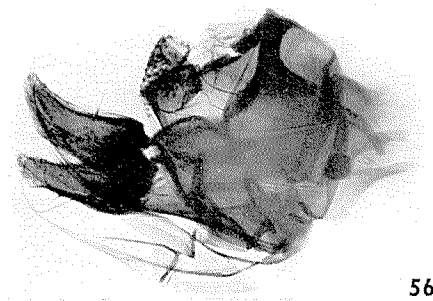
53



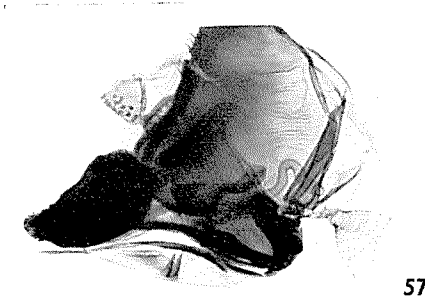
54



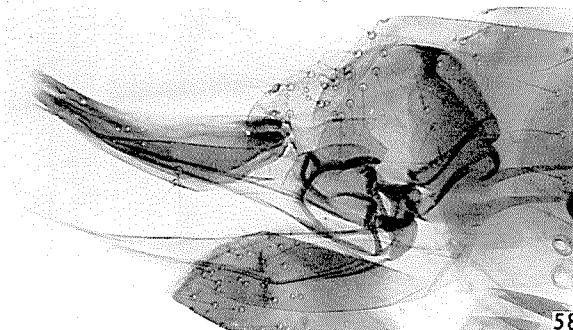
55



56



57



58