



Title	Notes on some Lithocolletis-moths occurring in Japan (Lep., Gracillariidae)
Author(s)	Kumata, Tosio
Citation	Insecta matsumurana, 29(1), 21-22
Issue Date	1966-11
Doc URL	https://hdl.handle.net/2115/9740
Type	departmental bulletin paper
File Information	29(1)_p21-22.pdf



and *C. schisandrae* Kumata in the genital structure. In the structure of the labial palpus, it resembles *C. metadoxa* (Meyrick, 1908), from which it is immediately distinguished by the absence of the raised scale-projections of the fore wing as well as the very different colour markings.

Explanation of plates

Plates I-III (Figures 1-24). Wings. Fig. 1, *Caloptilia aceris*, sp. nov. (holotype); 2, *C. acericola*, sp. nov. (paratype); 3, *C. heringi*, sp. nov. (holotype); 4, *C. hidakensis*, sp. nov. (holotype); 5, *C. wakayamensis*, sp. nov. (paratype); 6, *C. semifasciella*, sp. nov. (holotype); 7, ditto (paratype); 8, *C. kurokoi*, sp. nov. (holotype); 9, *C. monticola*, sp. nov. (holotype); 10, *C. gloriosa*, sp. nov. (paratype); 11, *C. geminata*, sp. nov. (holotype); 12, *C. ryukyuensis*, sp. nov. (paratype); 13, *C. alni*, sp. nov. (paratype); 14, ditto (holotype); 15, *C. pulverea*, sp. nov. (holotype); 16, ditto (paratype, a variation); 17, *C. cecidophora*, sp. nov. (holotype); 18, *C. solaris*, sp. nov. (paratype); 19, *C. heliciae*, sp. nov. (holotype); 20, *C. magnoliae*, sp. nov. (holotype); 21, *C. schisandrae*, sp. nov. (holotype); 22, ditto (paratype, a melanic form); 23, *C. kadsurae*, sp. nov. (paratype); 24, *C. illicii*, sp. nov. (holotype).

Plates IV-XII (Figures 25-44). Male genitalia. Fig. 25, *C. aceris*, sp. nov.; 26, *C. acericola*, sp. nov.; 27, *C. heringi*, sp. nov.; 28, *C. wakayamensis*, sp. nov.; 29, *C. semifasciella*, sp. nov.; 30, *C. kurokoi*, sp. nov.; 31, *C. geminata*, sp. nov.; 32, *C. monticola*, sp. nov.; 33, *C. gloriosa*, sp. nov.; 34, *C. alni*, sp. nov.; 35, *C. elongella* (Linné); 36, *C. ryukyuensis*, sp. nov.; 37, *C. pulverea*, sp. nov.; 38, *C. cecidophora*, sp. nov.; 39, *C. solaris*, sp. nov.; 40, *C. heliciae*, sp. nov.; 41, *C. magnoliae*, sp. nov.; 42, *C. schisandrae*, sp. nov.; 43, *C. kadsurae*, sp. nov.; 44, *C. illicii*, sp. nov.

Plates XIII-XX (Figures 45-65). Female genitalia. Fig. 45, *C. aceris*, sp. nov.; 46, *C. acericola*, sp. nov.; 47, *C. heringi*, sp. nov.; 48, *C. wakayamensis*, sp. nov.; 49, *C. semifasciella*, sp. nov.; 50, *C. kurokoi*, sp. nov.; 51, *C. monticola*, sp. nov.; 52, *C. ryukyuensis*, sp. nov.; 53, *C. gloriosa*, sp. nov.; 54, *C. geminata*, sp. nov.; 55, *C. hidakensis*, sp. nov.; 56, *C. alni*, sp. nov.; 57, *C. elongella* (Linné); 58, *C. pulverea*, sp. nov.; 59, *C. solaris*, sp. nov.; 60, *C. cecidophora*, sp. nov.; 61, *C. magnoliae*, sp. nov.; 62, *C. schisandrae*, sp. nov.; 63, *C. heliciae*, sp. nov.; 64, *C. kadsurae*, sp. nov.; 65, *C. illicii*, sp. nov.

NOTES ON SOME LITHOCOLLETIS-MOTHS OCCURRING IN JAPAN (LEP., GRACILLARIIDAE)

By TOSIO KUMATA

As a supplement to my previous paper published in 1963, "Taxonomic Studies on the Lithocolletinae of Japan" (part I, *Ins. Mats.* 25(2): 53-90; part II, 26(1): 1-48; part III, 26(2): 69-88), some notes on localities or host plants of Japanese *Lithocolletis*-species will be given hereinafter.

Lithocolletis nipponicella Issiki

Issiki, 1930, *Ann. Mag. Nat. Hist.* 6: 430 [Hokkaido and Honsyu]. Kumata, 1963, *Ins. Mats.* 25: 79, f. 19 [Hokkaido, Honsyu, Sikoku and Kyusyu. Host plants: *Quercus dentata*, *Q. serrata*, *Q. mongolica* var. *grosseserrata* and *Q. acutissima*].

Material examined: 1♂ & 2♀♀, 21/VI-1/VII, 1956, Nisinoomote, Tanega-sima, near Kyusyu, ex *Quercus dentata*.

Although this species has been known to be widely distributed in Japan, in this paper is given Tanega-sima as a locality of the species for the first time.

***Lithocolletis kamijoi* Kumata**

Kumata, 1963, Ins. Mats. 25: 82, f. 21 [Honsyu and Kyusyu. Host plants: *Quercus acutissima*].

Material examined: 3♀♀, 15-21/VI, 1965, Nisinoomote, Tanega-sima, near Kyusyu, ex *Castanea crenata* (new host record).

The material examined are slightly different from the type series as follows:— antenna ochre-white, annulated slightly with dark brown on upper side; tuft of head wholly snow-white. However, the genitalia agree well enough with those of the type.

***Lithocolletis pygmaea* Kumata**

Kumata, 1963, Ins. Mats. 25: 86, f. 23 [Hokkaido, Sikoku and Kyusyu. Host plants: *Castanea crenata*, *Quercus acutissima* and *Q. mongolica* var. *grosseserrata*].

Material examined: 1♀, 1/VII, 1965, Sasayama, Hyōgo-ken, Honsyu, ex *Quercus acutissima*.

***Lithocolletis viburni* Kumata**

Kumata, 1963, Ins. Mats. 26: 42, f. 24 [Sikoku and Kyusyu. Host plants: *Viburnum erosum*, *V. wrightii* and *V. dilatatum*].

Material examined: 5♂♂ & 1♀, 1-7/VII, 1965, Sasayama, Hyōgo-ken, Honsyu, ex *Viburnum erosum*.

***Lithocolletis lyoniae* Kumata**

Kumata, 1963, Ins. Mats. 26: 38, f. 22 [Sikoku and Kyusyu. Host plants: *Lyonia ovalifolia* var. *elliptica*].

Material examined: 2♂♂ & 1♀, 2-6/VII, 1965, Sasayama, Hyōgo-ken, and 1♂ & 1♀, 1-6/VI, 1964, Kii-Osima, Wakayama-ken, Honsyu, ex *Lyonia ovalifolia* var. *elliptica*.

***Lithocolletis pulchra* Kumata**

Kumata, 1963, Ins. Mats. 26: 9, f. 6 [Kyusyu. Host plants: *Rubus illecebrosus*].

Material examined: 2♀♀, 8-9/VI, 1964, Kii-Osima, Wakayama-ken, Honsyu, ex *Rubus palmatus* var. *coptophyllus* (new host record).

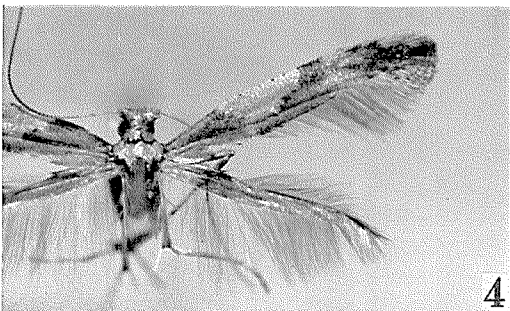
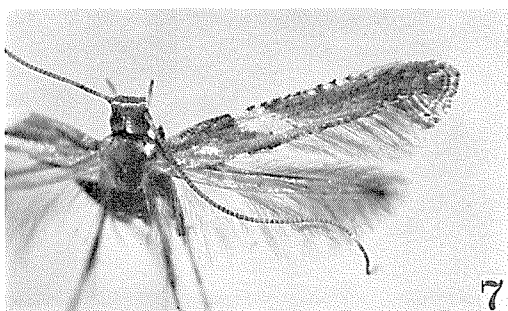
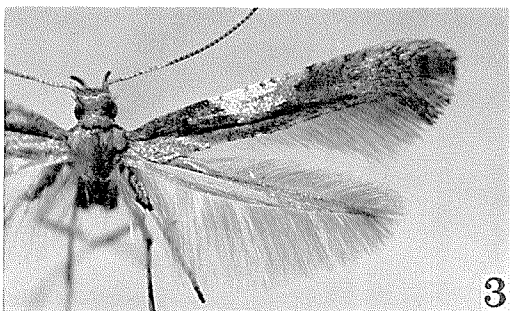
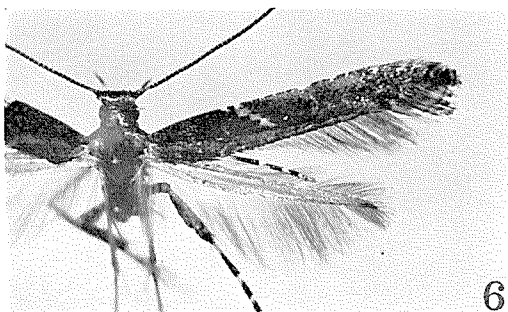
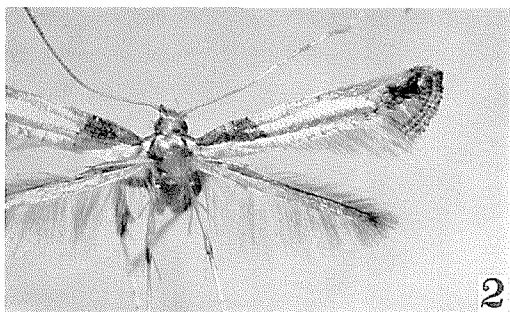
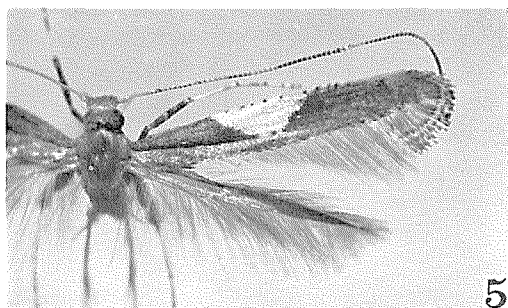
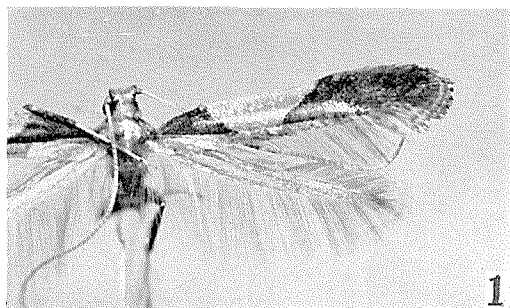
The preceding four species, *pygmaea viburni*, *lyoniae* and *pulchra*, are new to Honsyu.

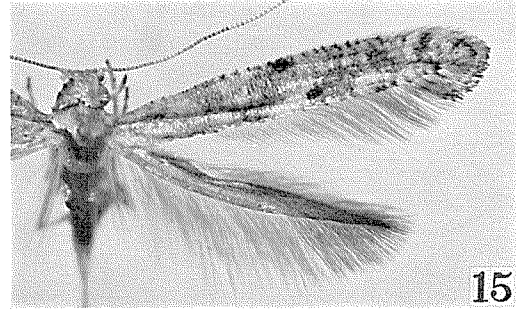
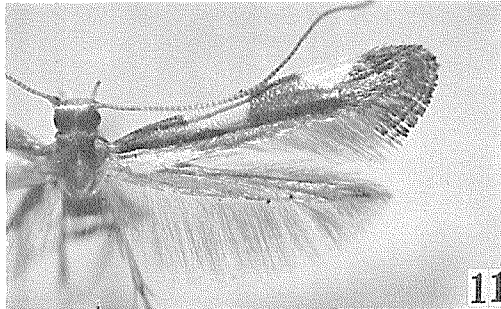
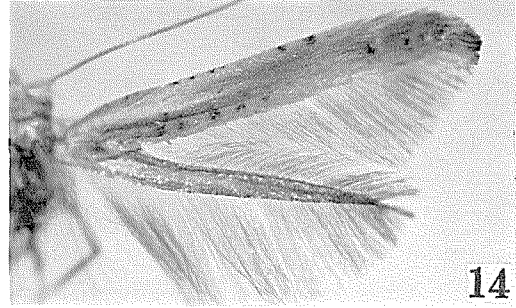
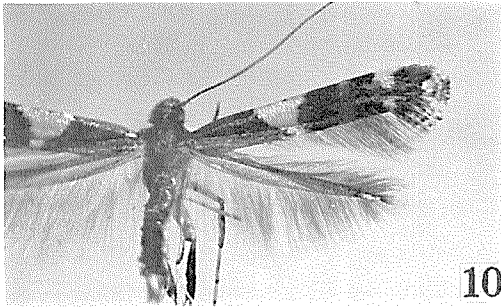
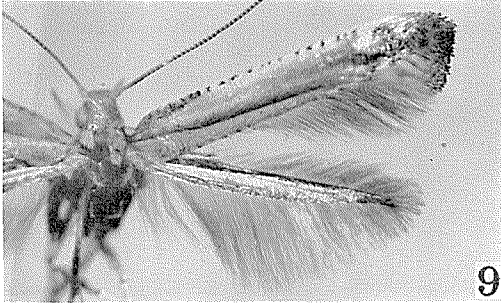
***Lithocolletis turugisana* Kumata**

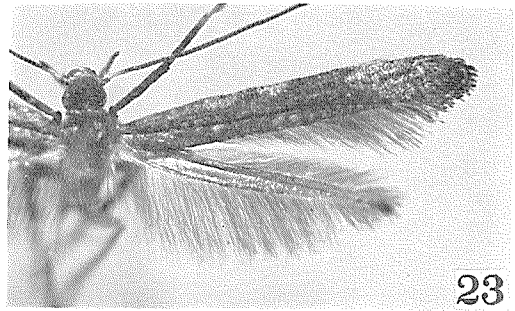
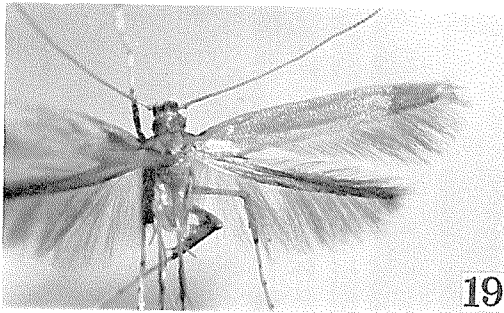
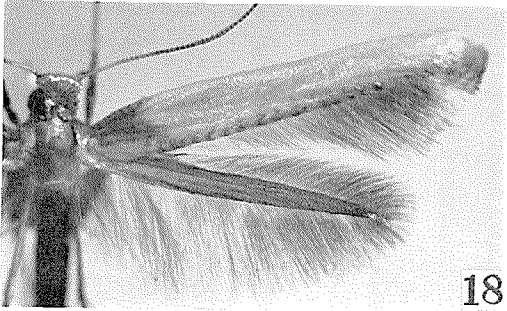
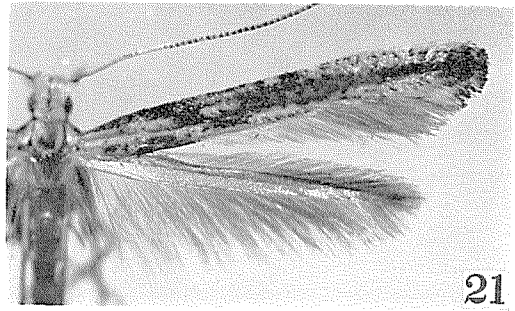
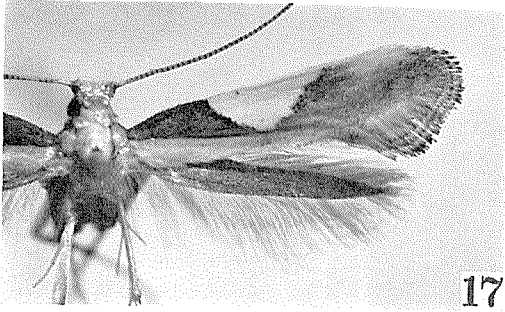
Kumata, 1963, Ins. Mats. 26: 45, f. 26 [Sikoku].

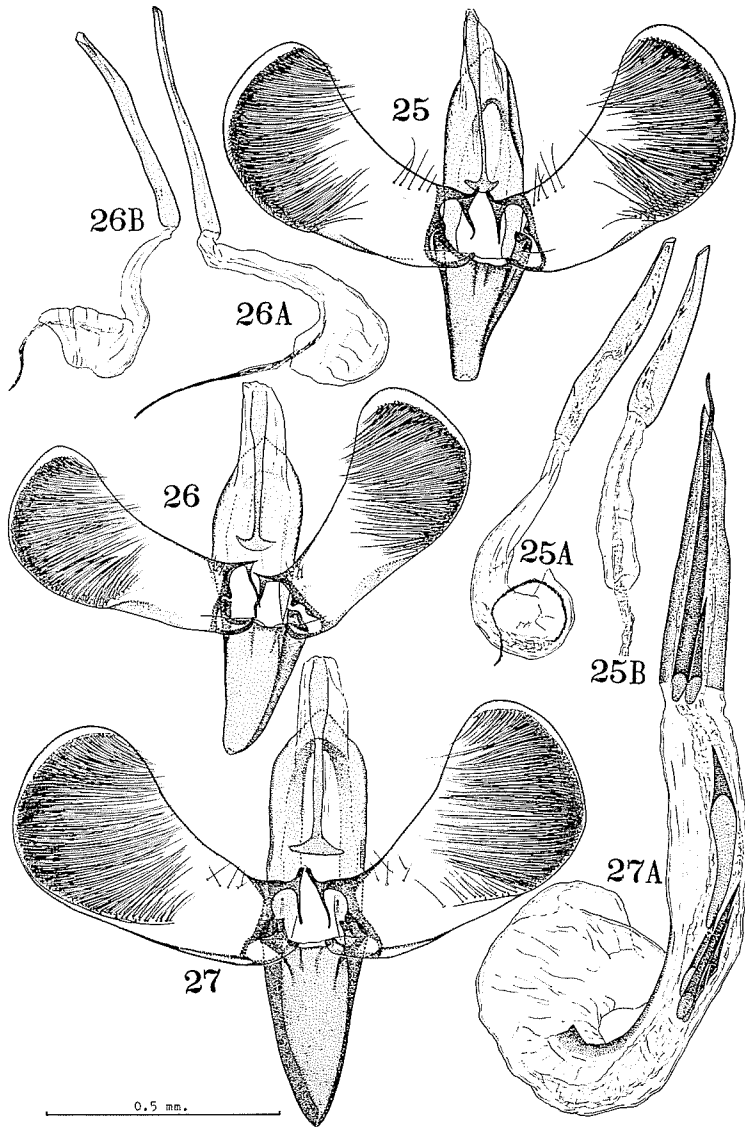
Material examined: 1♂, 17/V, 1956, Hikosan, Kyusyu, H. Kuroko leg.

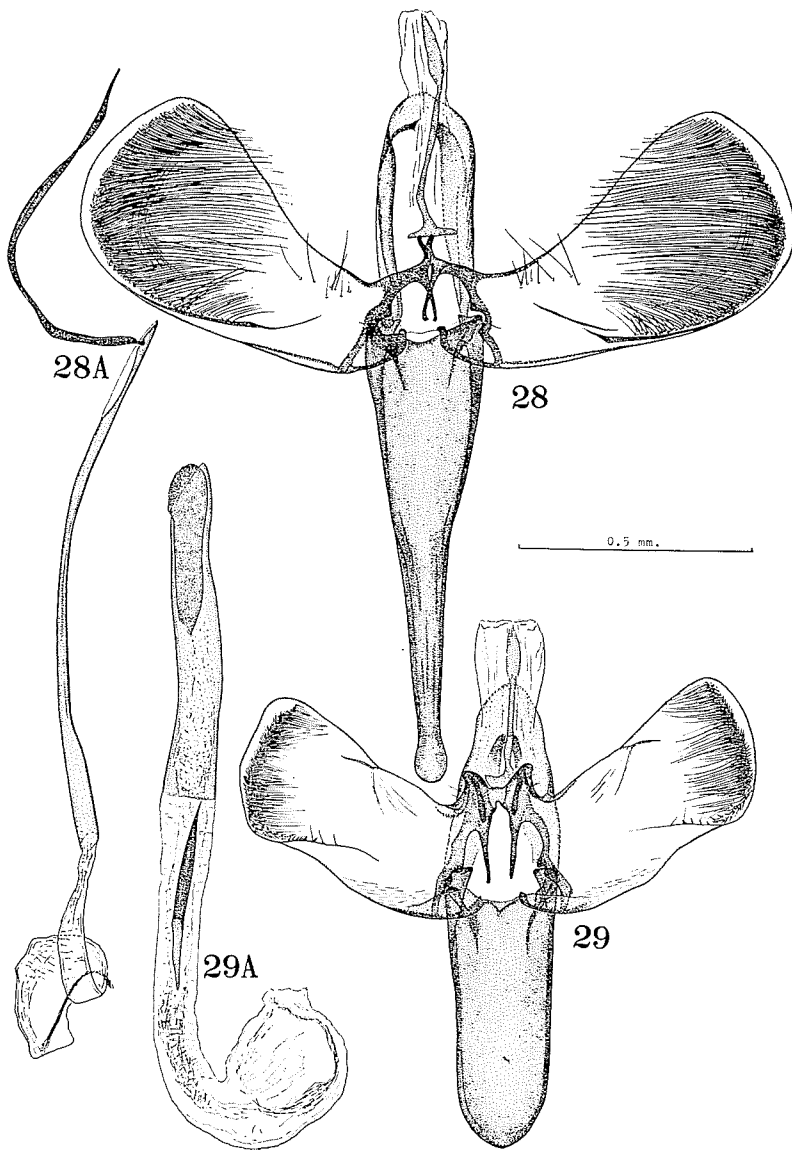
This species was originally described by a male. Through the kindness of Dr. H. Kuroko I have examined another male specimen collected from Kyusyu. The female of this species has not yet been described.

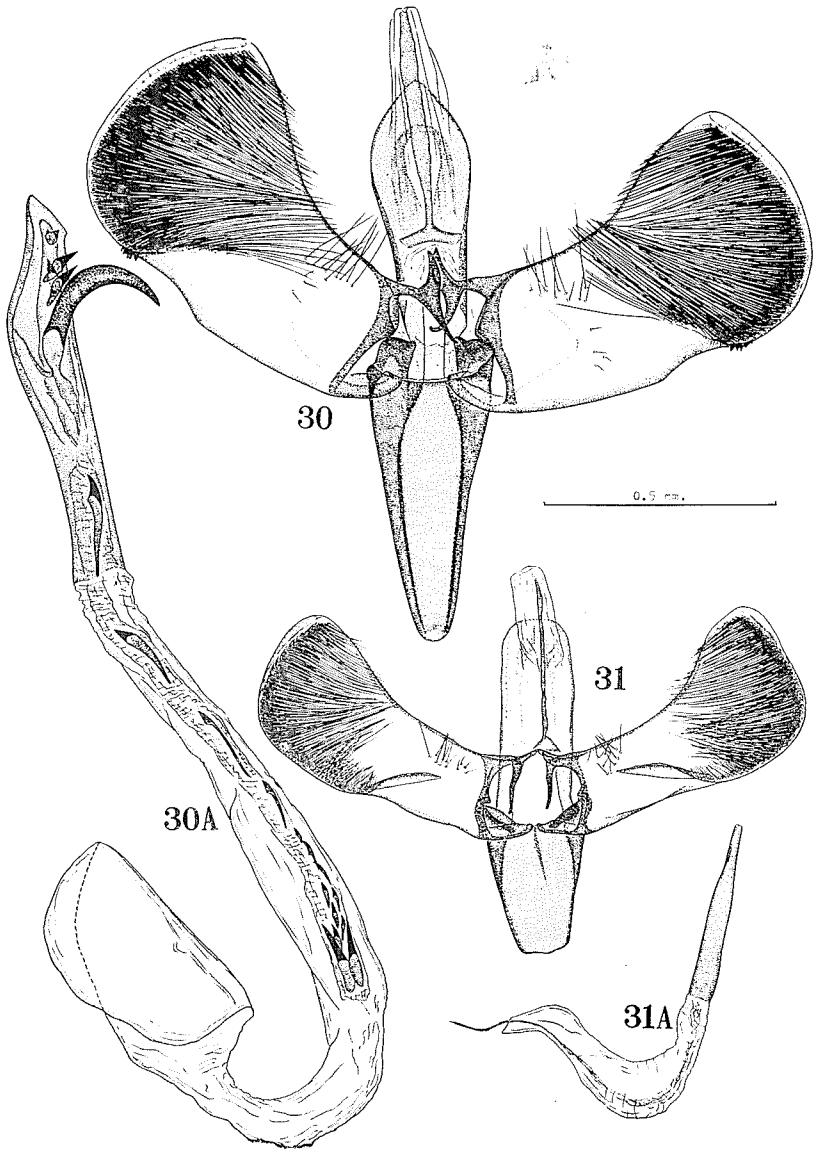


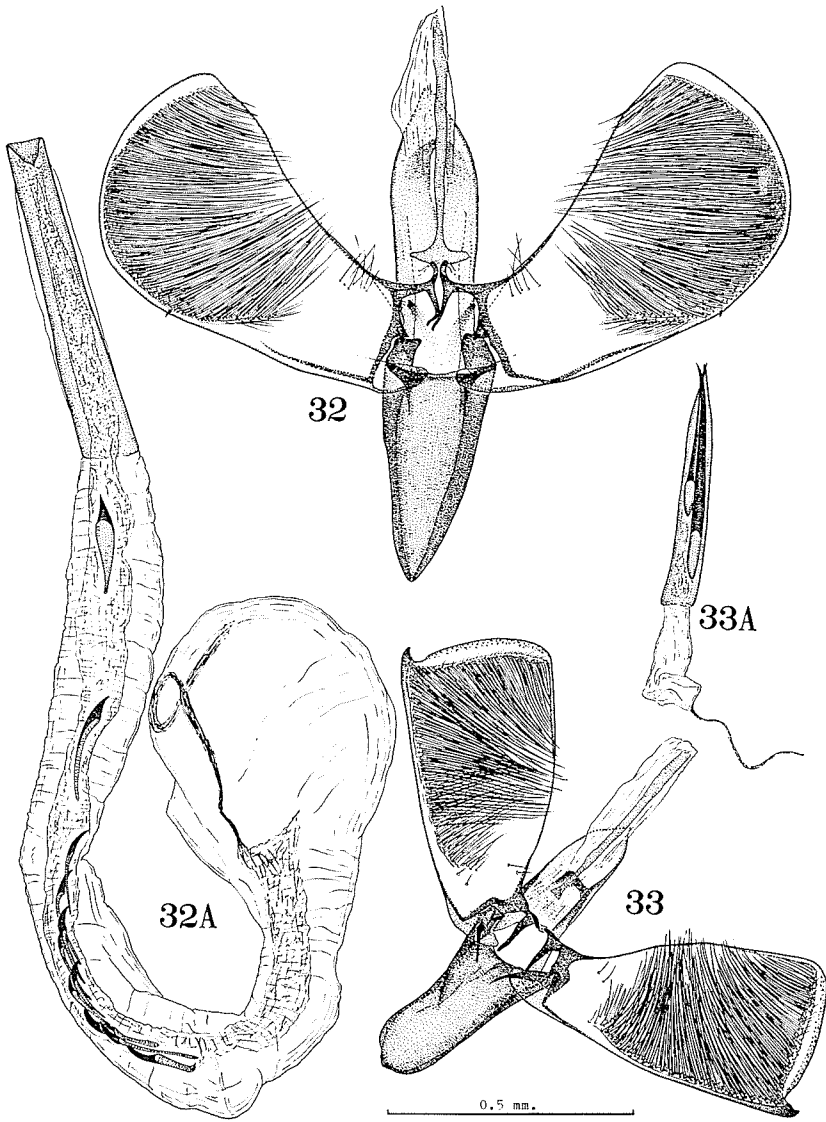


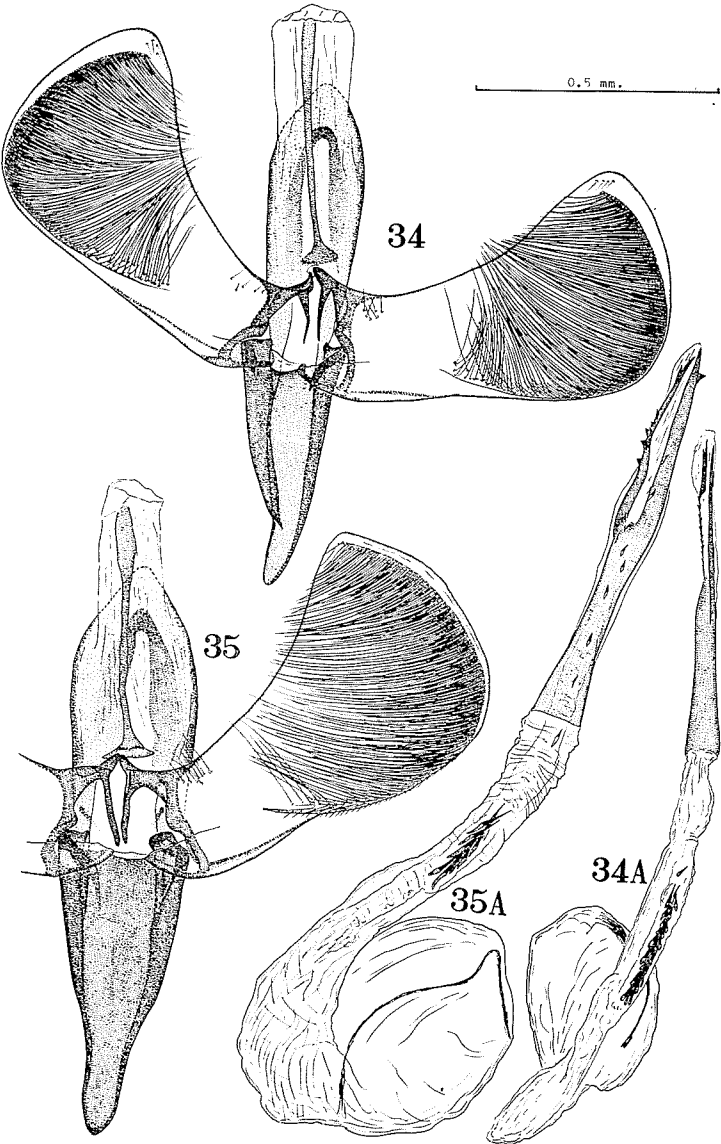


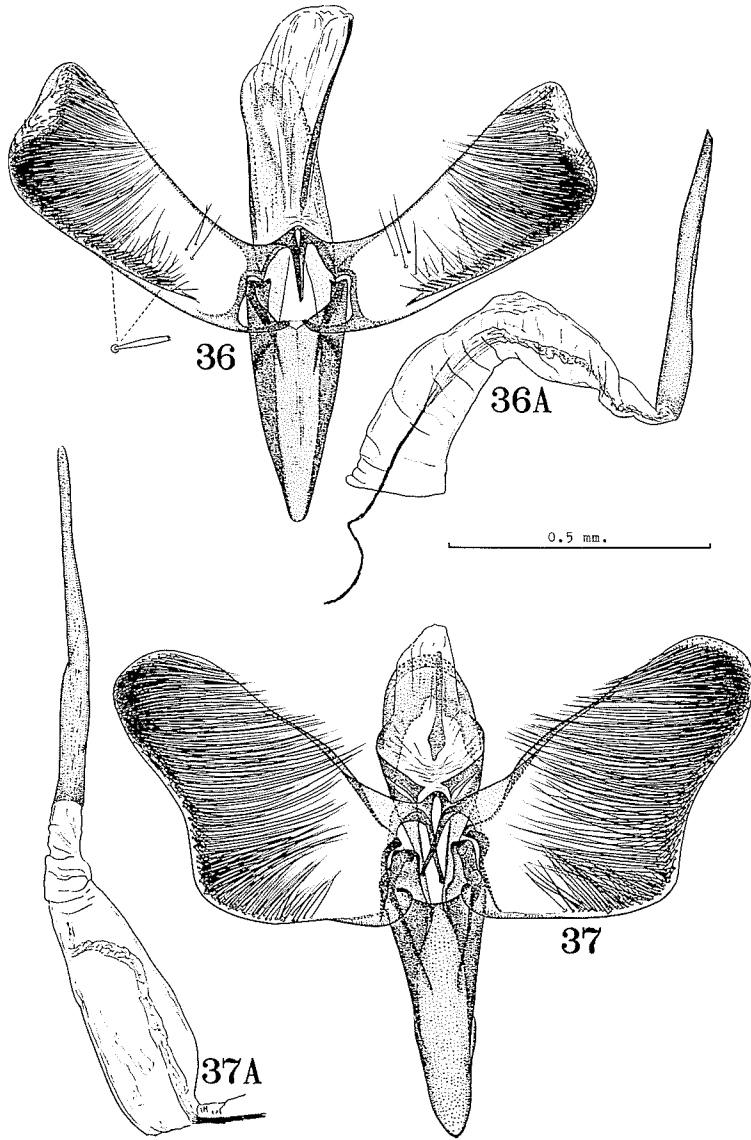


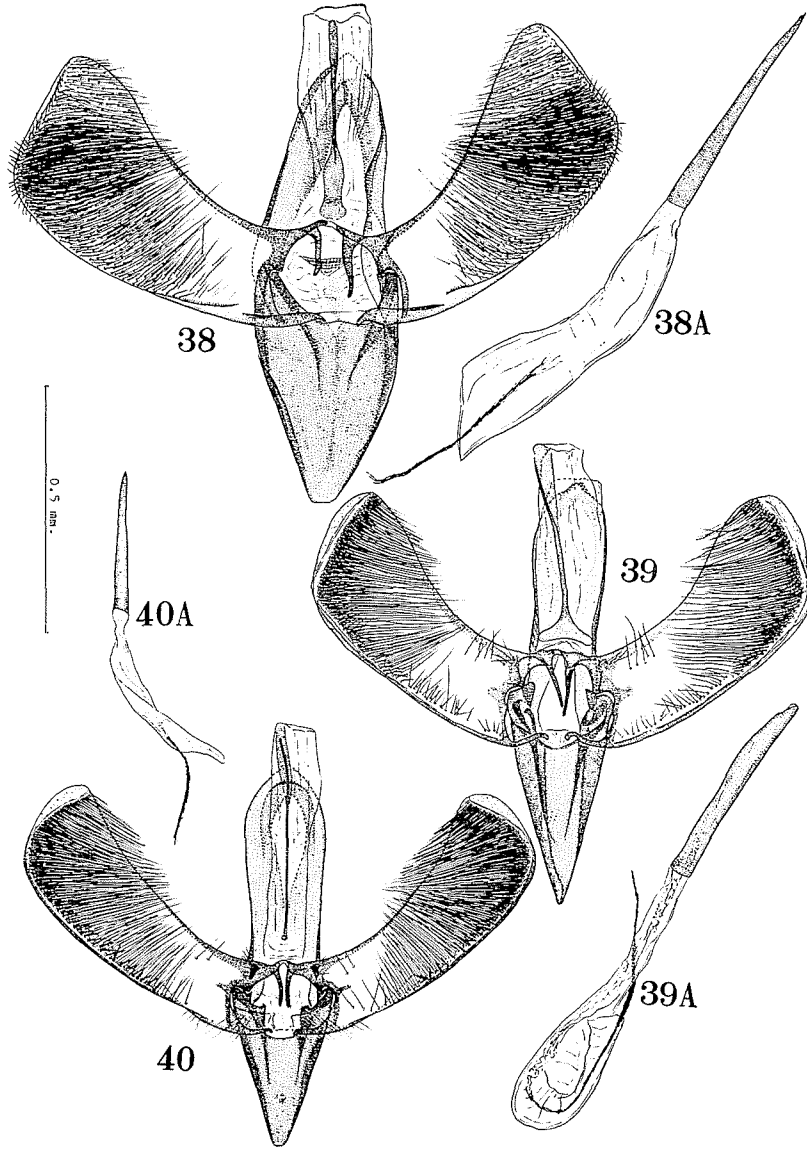


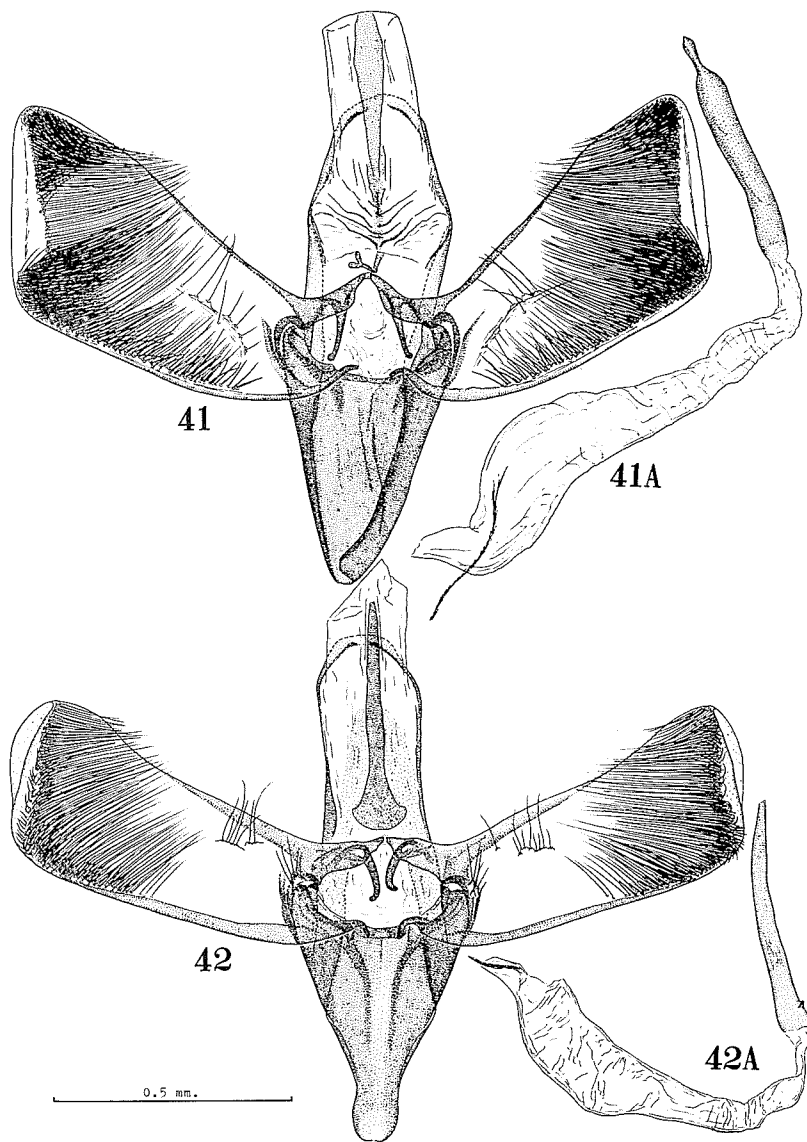


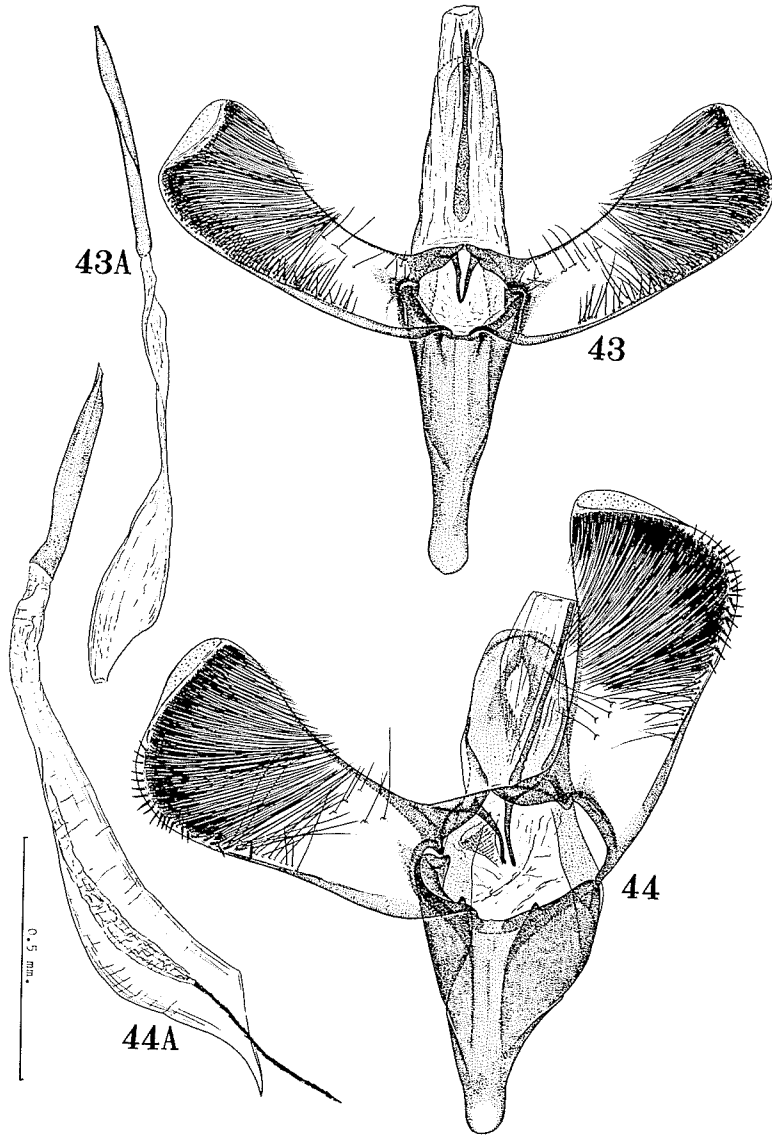


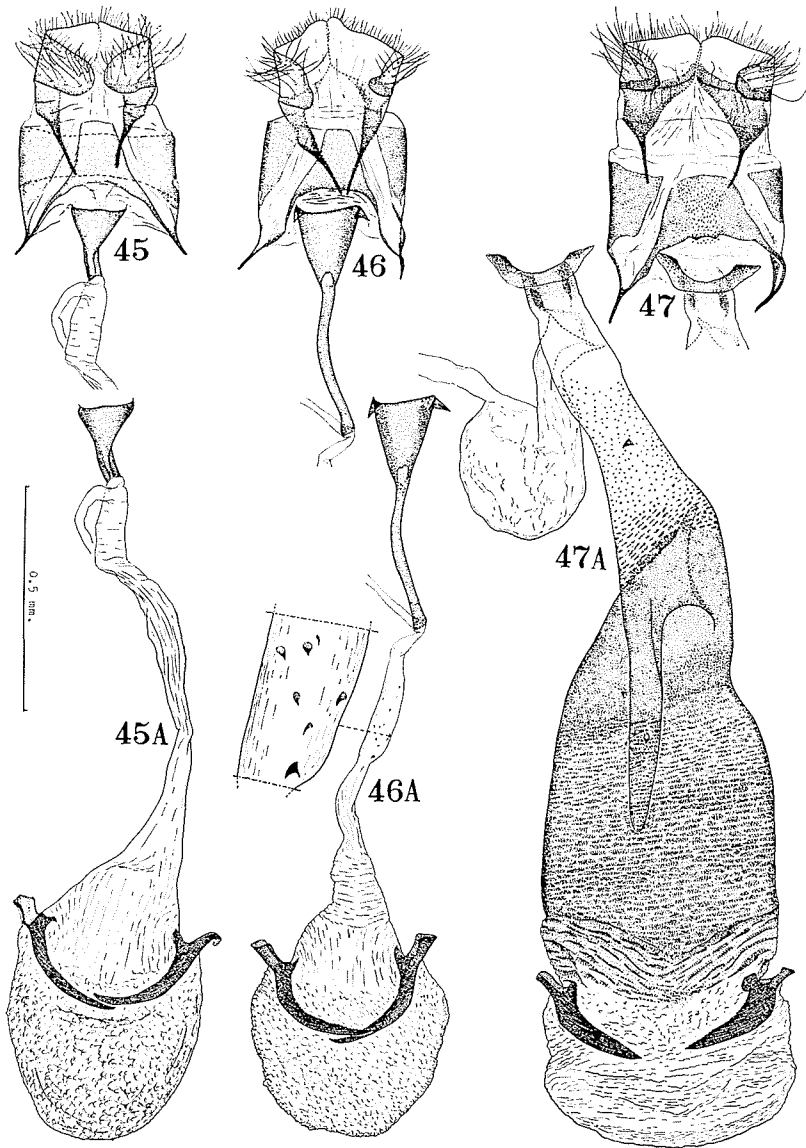


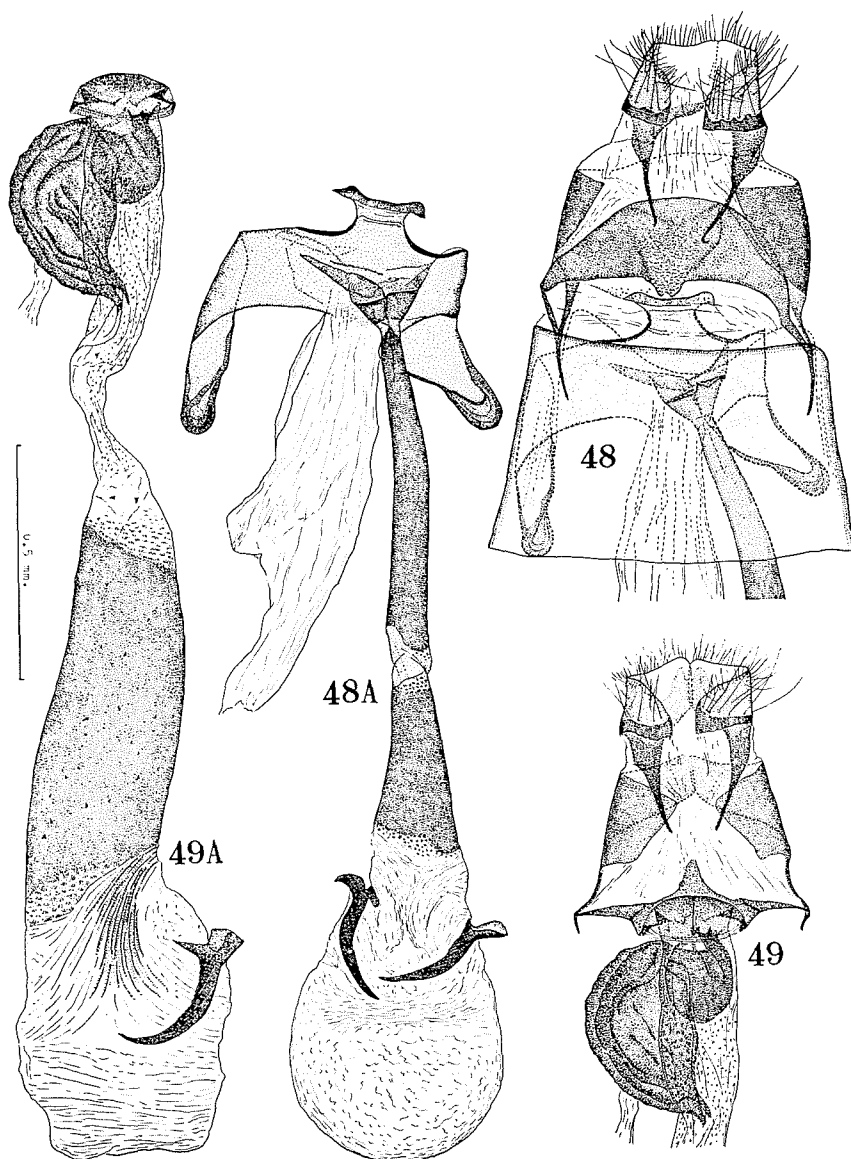


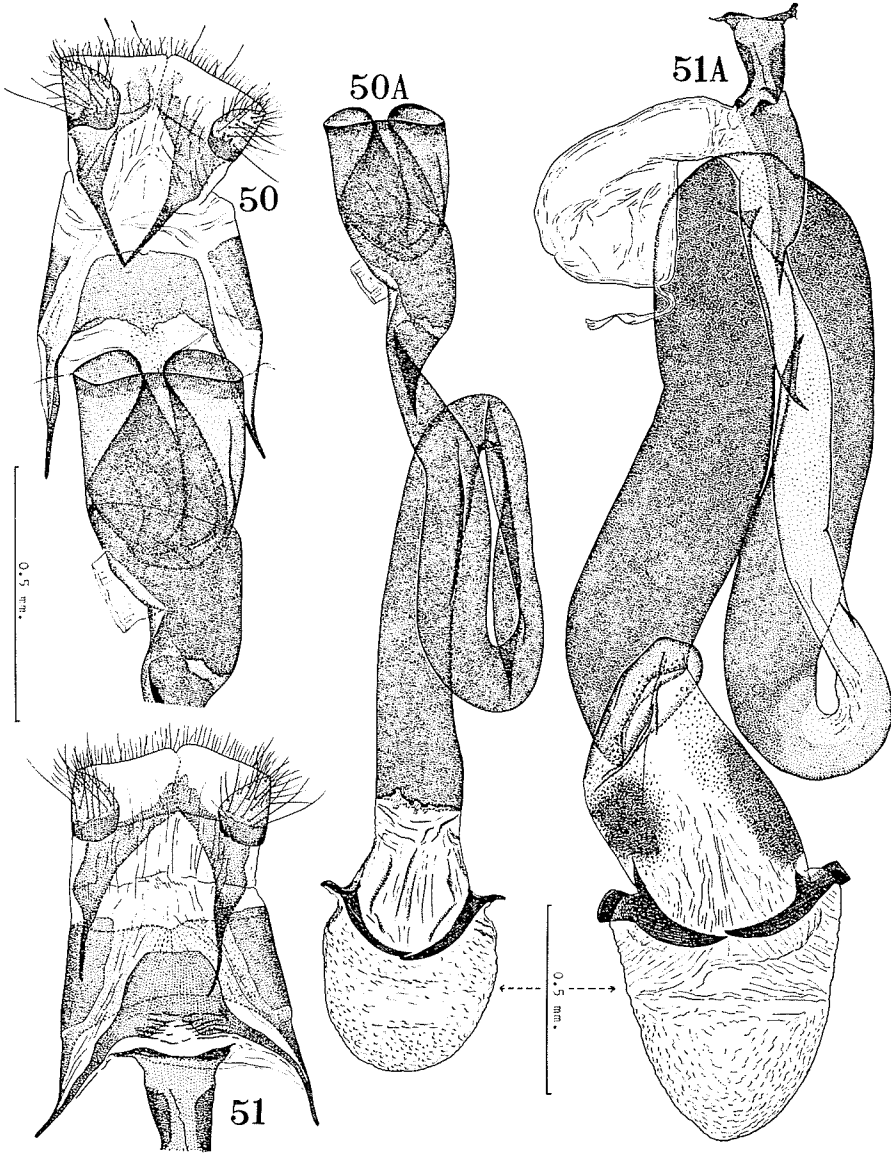


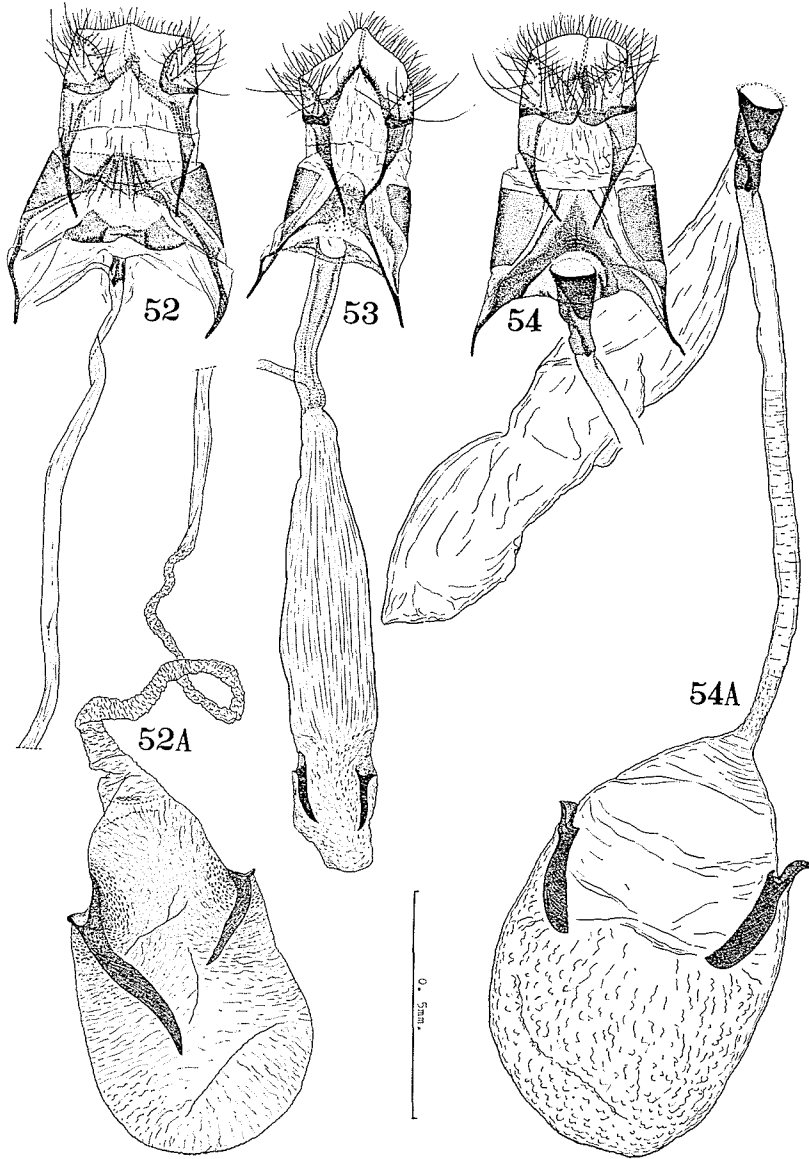


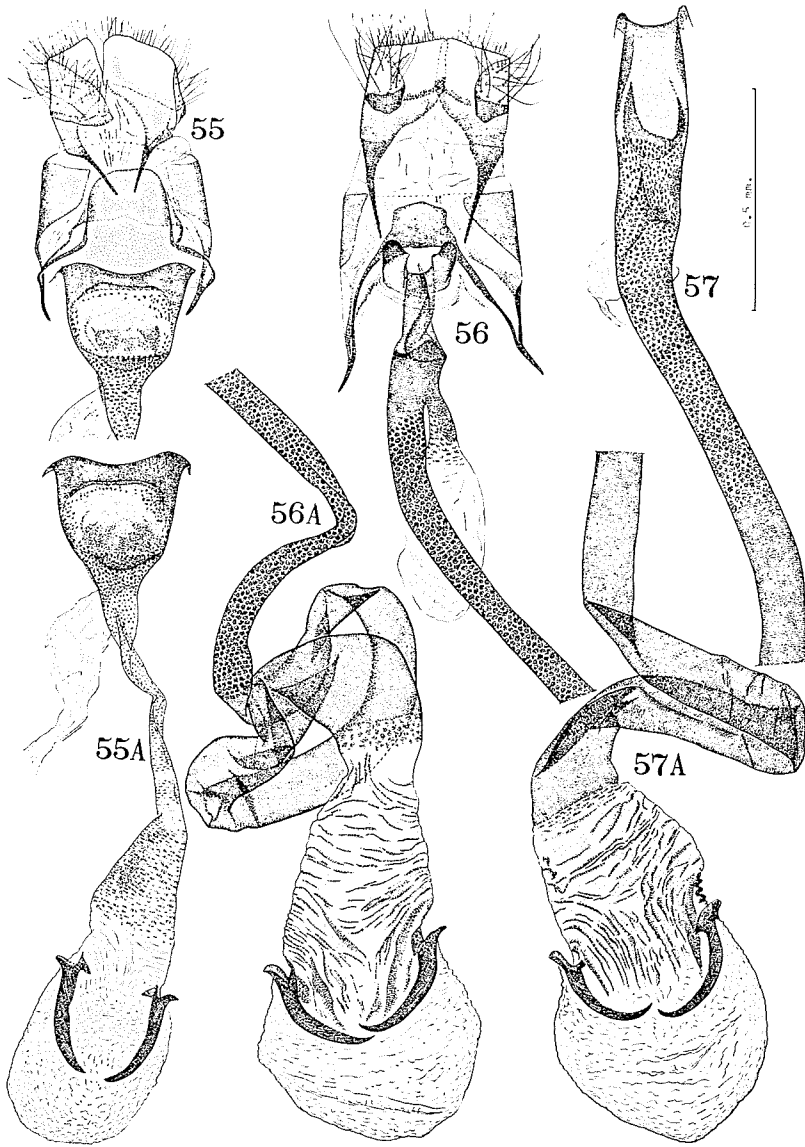


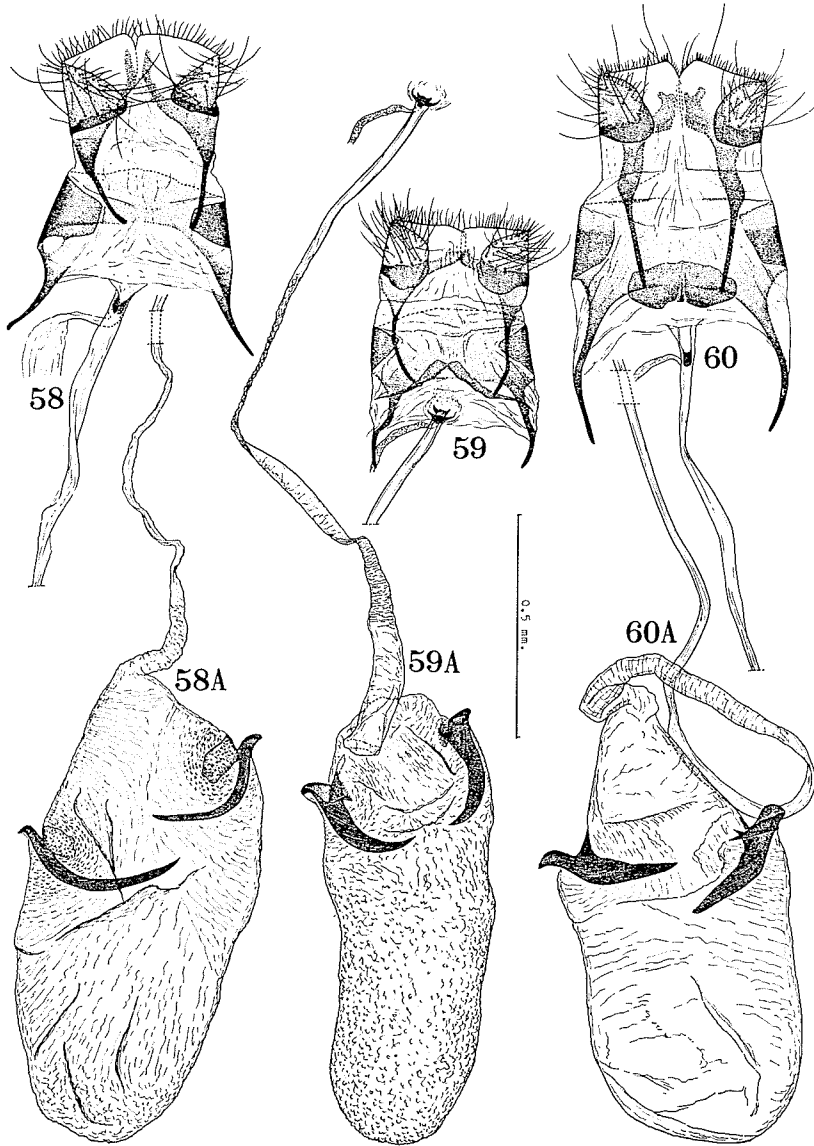


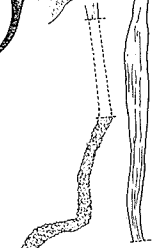
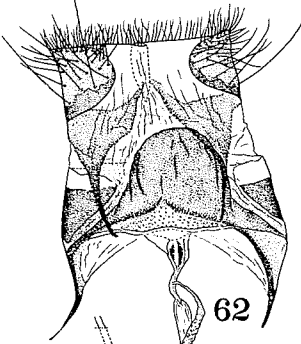
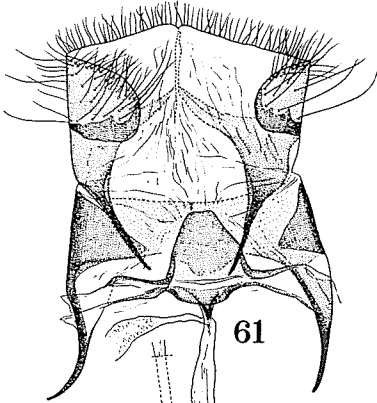








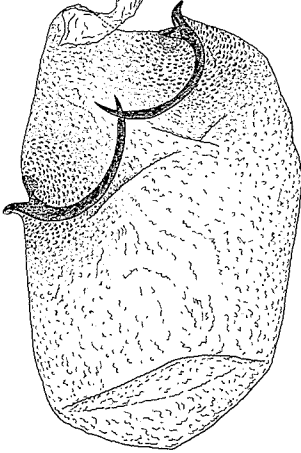
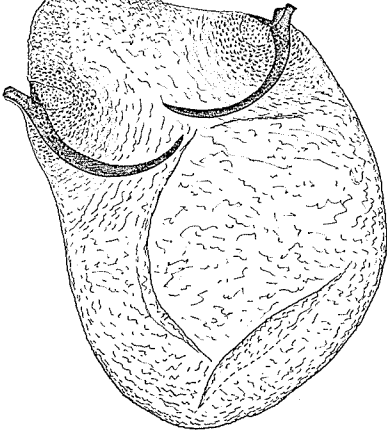


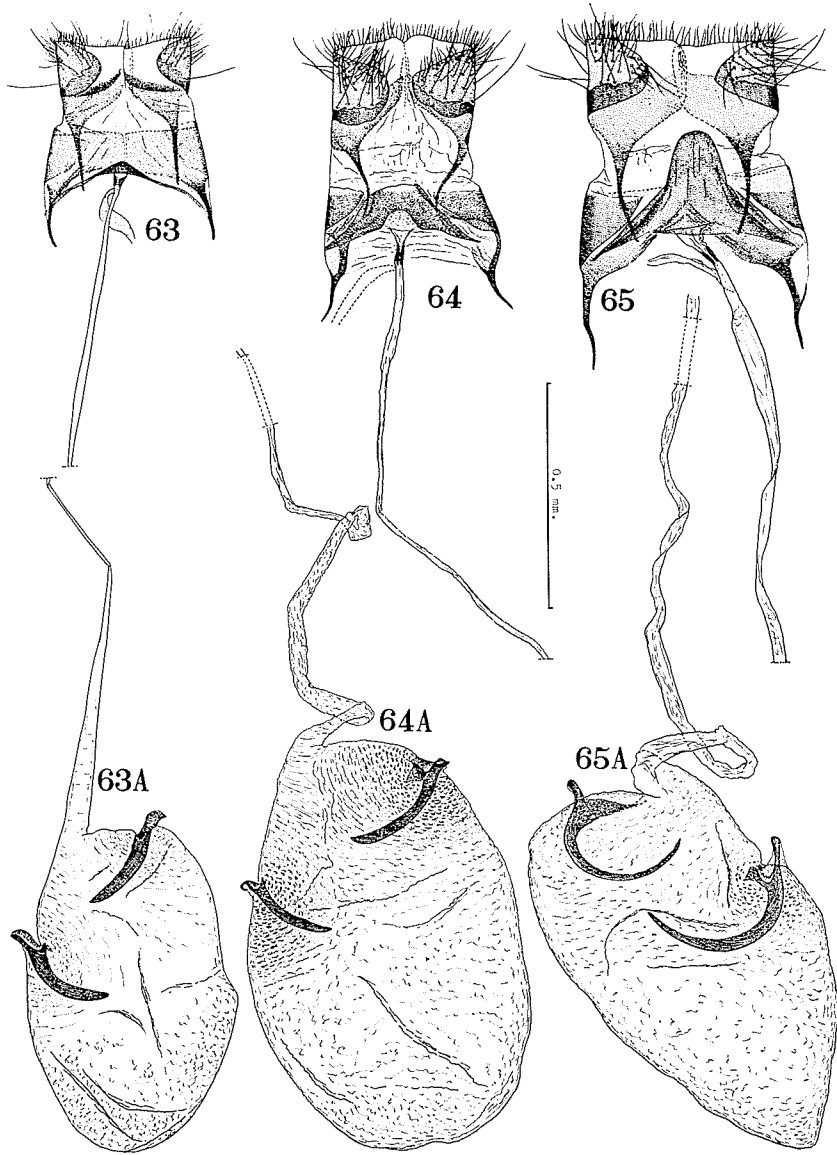


0.5 mm

61A

62A





Errata

Vol. 26, No. 1, 1963, p. 19, line 13 from top; p. 26, line 5 from top; p. 36, line 11 from top; p. 37, line 5 from bottom; p. 41, line 15 from bottom; and p. 42, line 9 from bottom, for "hardly" read "strongly".

Vol. 29, No. 1, 1966, p. 4, line 9 from top and line 4 from bottom; p. 5, lines 11 and 12 from bottom; p. 6, line 23 from top; p. 12, lines 5 and 7 from bottom; and p. 16, line 11 from bottom, for "hardly" read "strongly".

Vol. 29, No. 1, 1966, p. 7, line 8 from top, for "borwn" read "brown"; p. 8, line 19 from top, for "Fig. 30" read "Fig. 32"; p. 13, line 15 from top, for "XVIII" read "XVII"; and p. 17, line 17 from bottom, for "posterior" read "anterior".

Vol. 29, No. 1, 1966, p. 22, line 6 from bottom, for "*Ltihocolletis*" read "*Lithocolletis*".