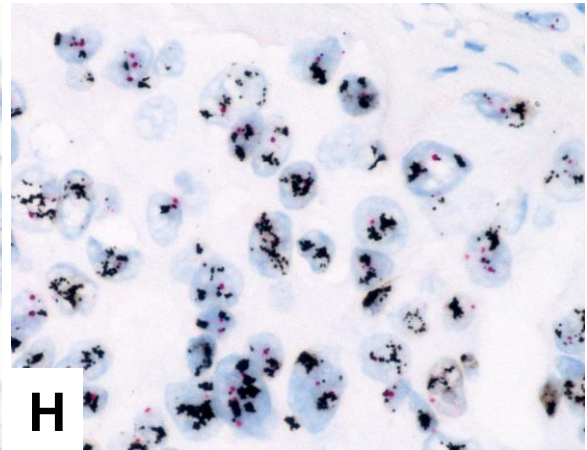
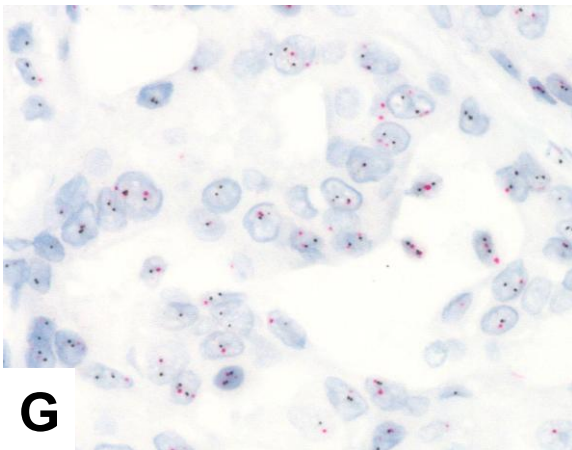
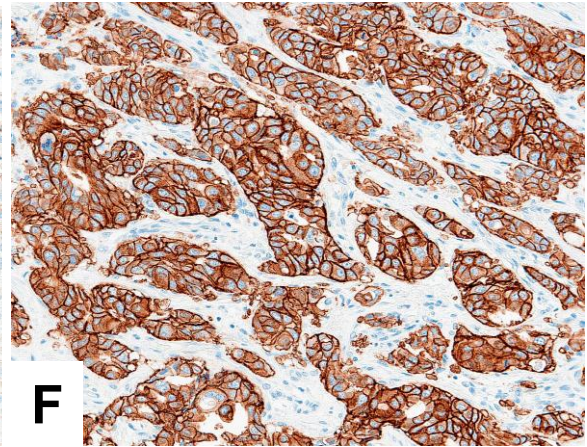
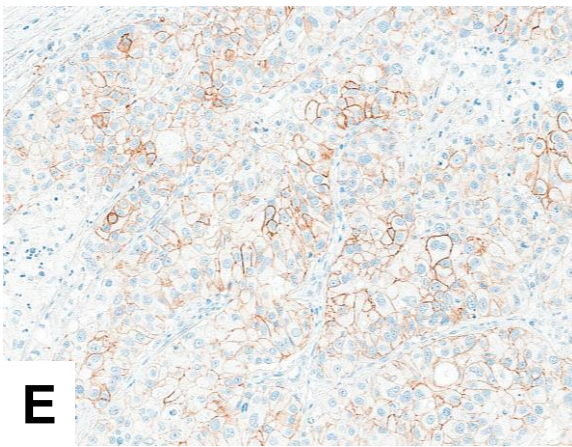
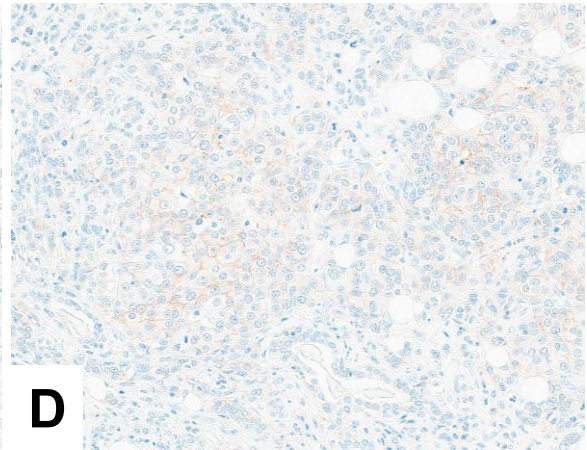
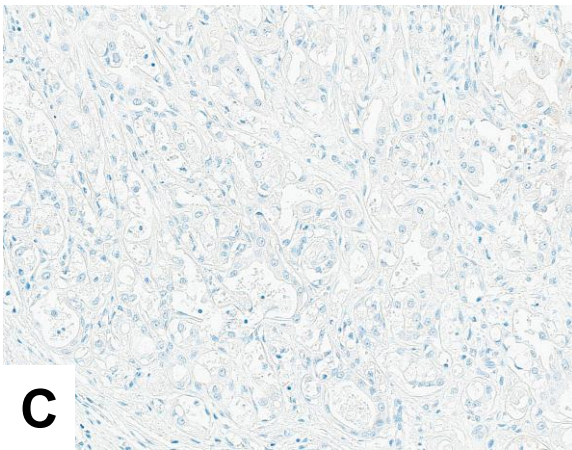
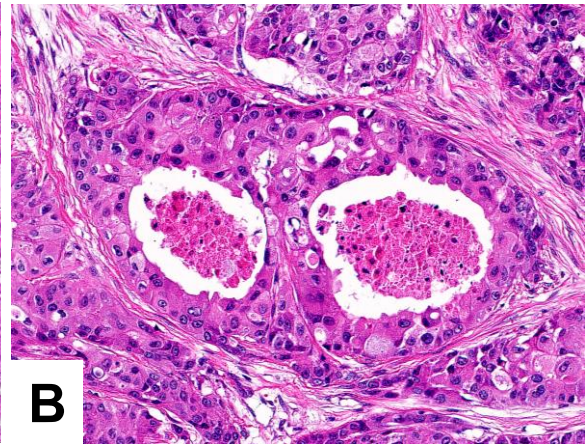
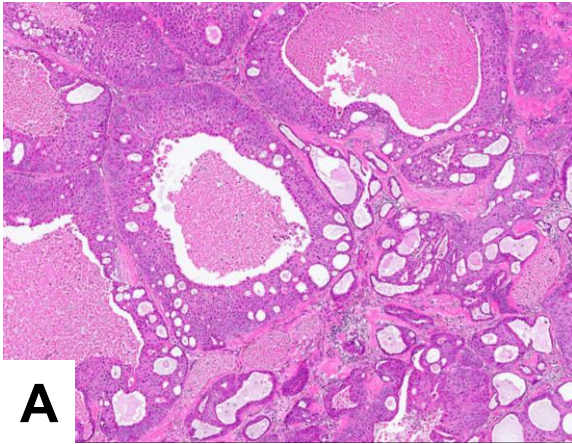




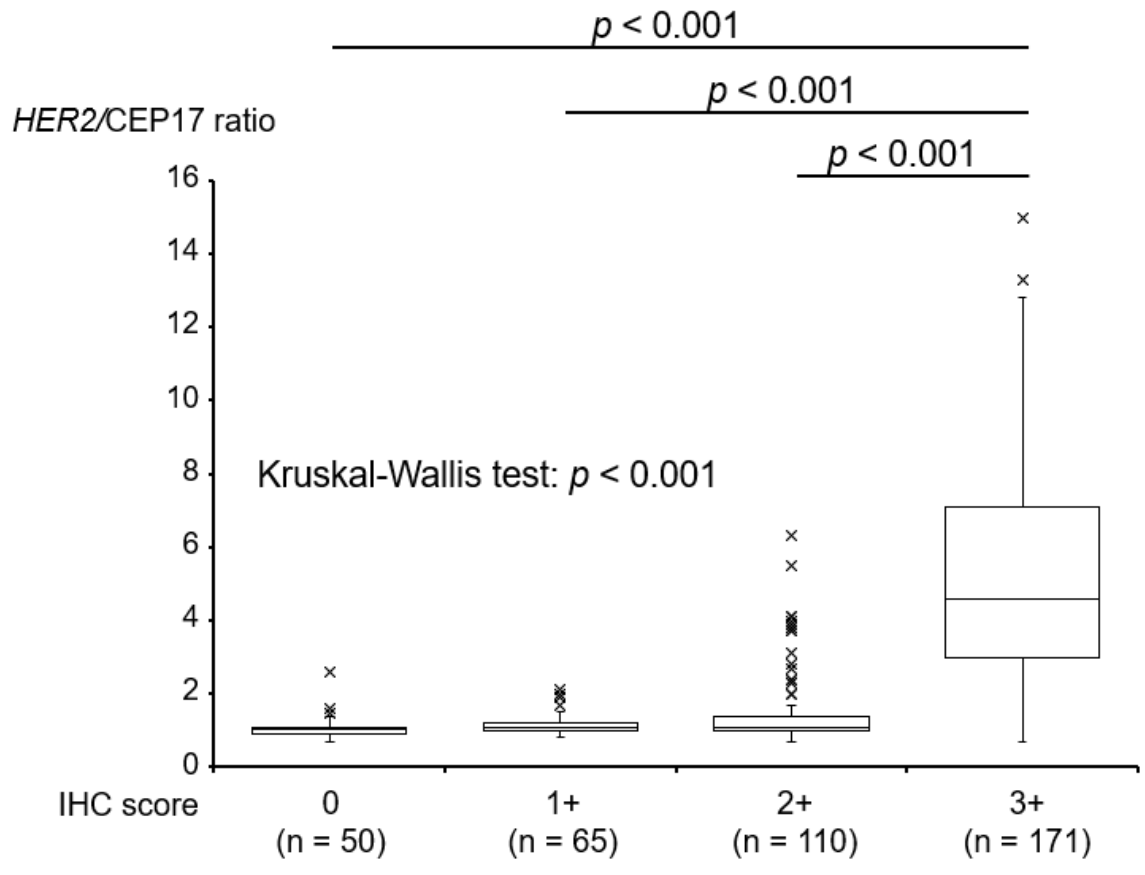
Title	The impact of HER2-Low expression in salivary duct carcinoma : Clinicopathologic features, survival outcomes, and association with androgen receptor-targeted therapy
Author(s)	Kano, Satoshi; Kawakita, Daisuke; Honma, Yoshitaka et al.
Citation	Oral oncology, 165, 107280 https://doi.org/10.1016/j.oraloncology.2025.107280
Issue Date	2025-04-18
Doc URL	https://hdl.handle.net/2115/97759
Rights	© 2025. This manuscript version is made available under the CC-BY-NC-ND 4.0 license http://creativecommons.org/licenses/by-nc-nd/4.0/
Type	journal article
File Information	Supplemental Figure 0705.pdf



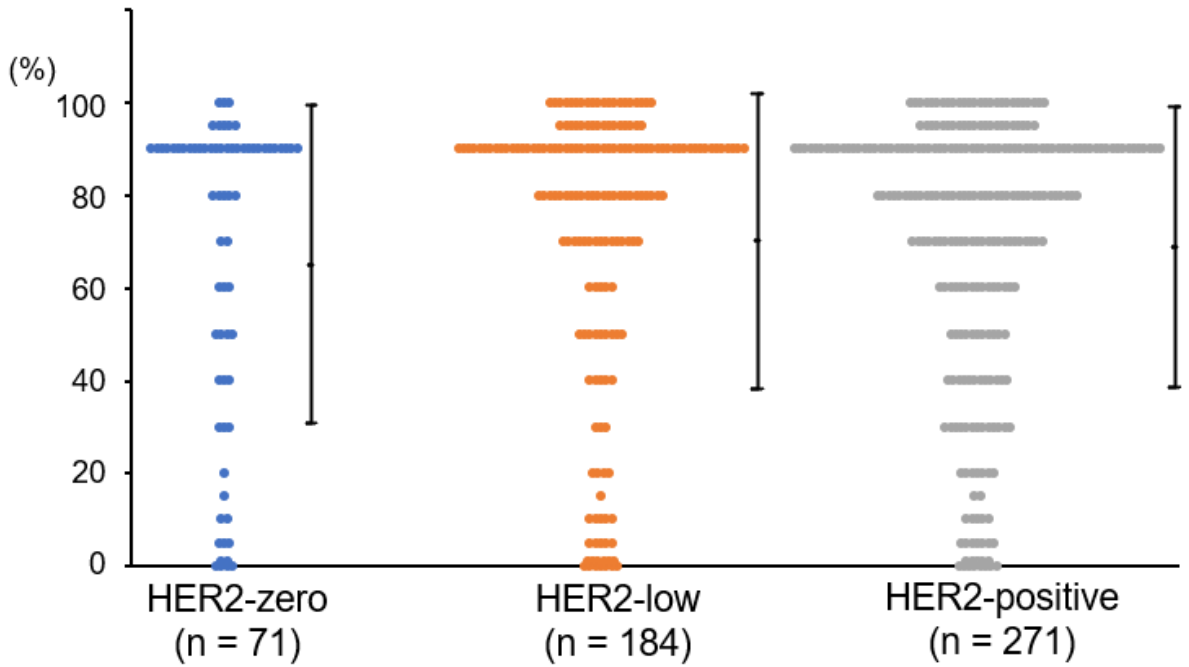
Supplemental Figure S1.



Supplemental Figure S2



Supplemental Figure S3



Kruskal-Wallis test: $p = 0.512$