



HOKKAIDO UNIVERSITY

Title	RECORDS OF SIX SPECIES OF CICADIDAE FROM NEPAL, WITH DESCRIPTION OF A NEW SPECIES (HOMOPTERA)
Author(s)	Naruse, Kan'ya; Takagi, Sadao
Citation	Insecta matsumurana. New series : journal of the Faculty of Agriculture Hokkaido University, series entomology., 11, 73-80
Issue Date	1977-07
Doc URL	https://hdl.handle.net/2115/9791
Type	departmental bulletin paper
File Information	11_p73-80.pdf



RECORDS OF SIX SPECIES OF CICADIDAE FROM
NEPAL, WITH DESCRIPTION OF A NEW
SPECIES (HOMOPTERA)

Scientific Results of Hokkaidô University Expeditions
to the Himalaya, Entomology No. 27

By KAN'YA NARUSE and SADAÔ TAKAGI

Abstract

NARUSE, K. and TAKAGI, S. 1977. Records of six species of Cicadidae from Nepal, with description of a new species (Homoptera). *Ins. matsum. n. s.* 11: 73-80, 4 figs.

Six species of Cicadidae are recorded from Central Nepal. *Pycna repanda* (Linné) and *Mata kama* (Distant) are newly recorded from Nepal. *Suisha himalayana* Naruse, n. sp. is described. A list of Cicadidae known to occur in Nepal is given.

Authors' addresses. NARUSE, K.: Higashi-Sugano 2-7-14, Ichikawa-shi, Chiba-ken, 272 Japan. TAKAGI, S.: Entomological Institute, Faculty of Agriculture, Hokkaidô University, Sapporo, 060 Japan.

Contents

Introduction	75
Enumeration	75
<i>Polyneura ducalis</i> Westwood.....	75
<i>Pycna repanda</i> (Linné)	75
<i>Suisha himalayana</i> Naruse, n. sp.	75
<i>Mata kama</i> (Distant)	78
<i>Platylomia saturata</i> (Walker)	78
<i>Cicadetta zenobia</i> (Distant)	79
A list of Nepalese Cicadidae	80

INTRODUCTION

Records of cicadas here are based on a small collection made by S. Takagi during his stay in Central Nepal in 1975. The collection contains six species, of which two are newly recorded from Nepal and one is described as new to science. In 1973 (Proc. Jap. Soc. Syst. Zool. 9: 36-40) K. Naruse recorded 13 species of Cicadidae from Central Nepal on the basis of specimens collected in 1968. They belong to the vernal and aestival faunas, with only *Platylomia saturata* commonly found in the 1975 collection, which is composed of aestival and autumnal cicadas. Alpine autumnal cicadas are especially noticeable in the collection. Our knowledge of the cicada fauna of Nepal is still fragmentary. A list of Cicadidae known to occur in Nepal is given at the conclusion of this paper for a provisional survey. The collection including the holotype of the new species is deposited in the Entomological Institute, Hokkaidô University.

ENUMERATION

Polyneura ducalis Westwood

Polyneura ducalis Westwood, 1840, Int. Moder. Class. Ins.: 422.

1 ♂, near Syabru, Bagmati Zone, alt. ca. 2000 m, Sept. 19, 1975.

This species was named in 1840, but it was illustrated and described as late as 1845. This is a peculiar cicada, having reticulate-veined tegmina, and is the only known representative of the genus *Polyneura* Westwood. It has been recorded from India, Nepal, Sikkim, Assam, Burma, Szechwan and Tibet.

The specimen was found caught and struggling in a cobweb. The collecting site was an oak forest with *Quercus lanuginosa* dominant.

Pycna repanda (Linné)

Cicada repanda Linné, 1758, Syst. Nat.: 436.

1 ♂, Thare Pati, near Gosainkund, Bagmati Zone, alt. ca. 3600 m, Oct. 7, 1975.

1 ♂, Sundarijal, near Kathmandu, Bagmati Zone, alt. ca. 1600 m, Oct. 13, 1975.

This is a well-known cicada, first illustrated in 1776 by Houttuyn of Netherlands, and has been recorded from India, Bengal, Assam, Burma, Kashmir, Sikkim and China. Nevertheless, it has not been known from Nepal so far. The genus *Pycna* Amyot et Serville is close to *Platypleura* Amyot et Serville and *Suisha* Kato. Many species, including the type-species, of the genus are known from Africa and some others from Madagascar and Asia, attaining about a score in total. See also under *Suisha himalayana* n. sp.

Suisha himalayana Naruse, n. sp.

2 ♂♂ (holo- and paratype), Ghora Tobela, Langtang Valley, Bagmati Zone, alt. ca. 3000 m, Sept. 23, 1975.

Referable to *Suisha* Kato by the body hairy all over, the head including the eyes as broad as the base of the mesonotum, with the frontal margin gently and



Fig. 1. *Suisha himalayana* Naruse, n. sp., ♂ (holotype). Body.

roundly produced anteriorly, and the tegmina with the outer margin straight. Differing, however, from *Suisha formosana* (Kato), the type-species, and *Suisha coreana* (Matsumura) by the lateral area of the pronotum dilated in a delta-shape rather than convex, and the tegmina slender with the costal membrane scarcely dilated near the base. Further, it is readily distinguishable from the latter two by the tegmina apically with a large maculation crossing the longitudinal veins of radial area and the 1st to 3rd cross-veins and enclosing hyaline spots, and by the wings maculated dark apically but not on the vannus. These characters are shown in Fig. 1 and 2.

♂. Body thick and short, remarkably hairy. Head olive green, and hairy, with black in a transverse fascia confluent with a large spot covering the area of ocelli and the base of front, and between antenna and eye; these markings are more or less obscured by hair. Pronotum olive green, hairy, with following parts black: a median longitudinal fascia, abruptly widened beyond middle; incisures; and a broad anterior margin of dilated lateral area. Mesonotum glossy black and locally hairy, with following parts olive green: H-shaped marking; lateral and posterior parts including cruciform elevation and the margin of postalare. Abdo-

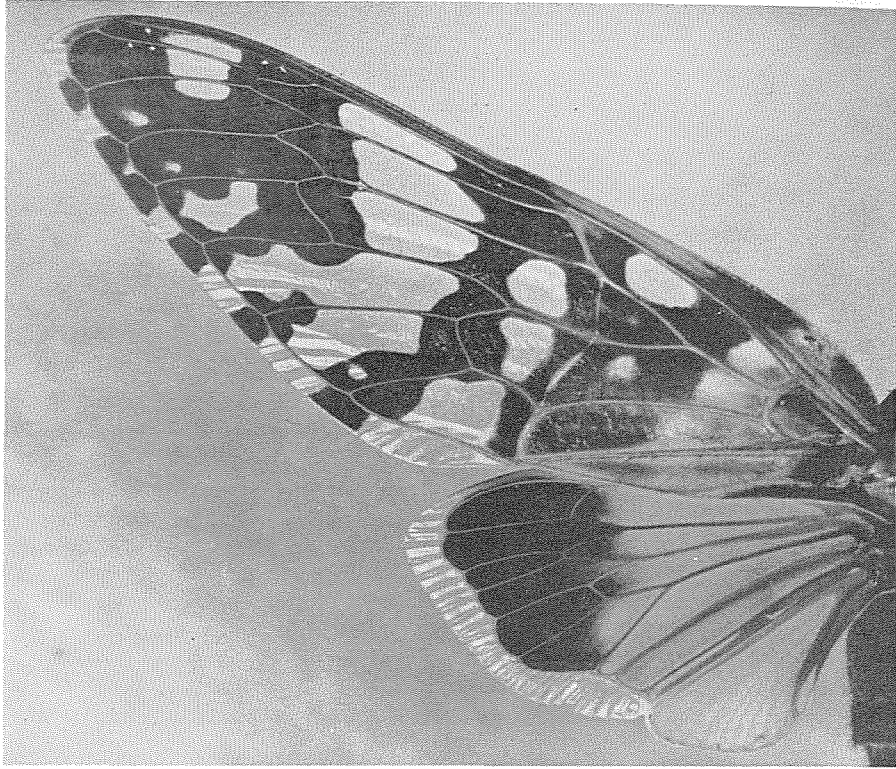


Fig. 2. *Suisha himalayana* Naruse, n. sp., ♂ (paratype). Tegmen and wing.

men above and beneath black, with black long hair, posterior margins of 3rd to 6th tergites narrowly castaneous. Head and thorax beneath thickly golden hairy, the longitudinal sulcation and transverse striations of front black. Legs castaneous, with long hair, femora with dark spots. Opercula broad, black, the outer margin rounded and narrowly ochreous. Rostrum extending beyond hind coxae, but not attaining edge of operculum. Tegmina hyaline, fasciated and spotted with dark fuscous brown (as shown in Fig. 2) except for base, which is opaque and ochreous; veins ochreous, more or less tinged with green especially on basal half of tegmen. Wings ochreous, apical area dark castaneous; outer margin hyaline; vannus ochreous, not maculated; jugum with basal part grey.

Body length, ca. 18–19 mm; length of tegmen, ca. 28–29 mm.

This species is at a glance very similar to *Pycna repanda*, which also is found in the collection, but it is referable to *Suisha* as mentioned above. Here the characters of the head and thorax acquire importance in accordance with Distant's system of classification. Its resemblance to *Pycna repanda*, however, may not be superficial and fortuitous, but may suggest some relationship between the two.

So far as known *Suisha* is a small group, including *Suisha formosana* from Taiwan and *Suisha coreana* from Korea and adjacent areas. These species are peculiar in emerging in late autumn or winter. *Suisha himalayana* was also collected under cool weather in the transitional zone between oak forest and



Fig. 3. Langtang Valley: Ghora Tobela, alt. ca. 3000 m. Habitat of *Suisha himalayana* Naruse, n. sp. *Quercus semecarpifolia* forest is succeeded by conifer forest of *Tsuga dumosa* and *Abies spectabilis*.

alpine conifer forest at an altitude of 3000 m (Fig. 3). *Pycna repanda* was collected in early October at Thare Pati (3600 m), in an alpine deciduous forest mixed with junipers and rhododendrons, as well as at Sundarijal (1600 m), in a temperate evergreen forest. Such a preference for a cool climate common in all these cicadas may be worth noticing in considering the relationship among them.

Mata kama (Distant)

Pomponia kama Distant, 1881, Trans. Roy. Ent. Soc. London: 643.

1 ♂, Sheopuri, near Kathmandu, Bagmati Zone, alt. ca. 2300 m, Aug. 30, 1975.
1 ♀, Sheopuri, alt. ca. 2000 m, Aug. 31, 1975.

The genus *Mata* Distant is close to *Oncotympana* Stål. It is represented by two species. *Mata kama* has been recorded from Northern India and Bengal and is here newly recorded from Nepal. (According to Distant this species was found in Signoret's collection from Java.) The other species *Mata rama* Distant occurs in Bhutan.

The collecting sites were in oak-laurel forest.

Platylomia saturata (Walker)

Dundubia saturata Walker, 1858, List. Sp. Homopt. Ins. Coll. Brit. Mus. Suppl.: 6.



Fig. 4. Langtang Valley: between Ghora Tobela (alt. ca. 3000 m) and Kyangjin Gompa (alt. ca. 3800 m). Habitat of *Cicadetta zenobia*, which was found on the south-facing slope.

3 ♂♂, Godavari, Phulchoki, near Kathmandu, Bagmati Zone, alt. ca. 1600 m, Aug. 20–21, 1975.

Godavari, the collecting site, is a humid valley, covered by warm-temperate evergreen forest with *Castanopsis indica* and *Schima wallichii* dominant.

Cicadetta zenobia (Distant)

Melampsalta zenobia Distant, 1912, Ann. Mag. Nat. Hist. (8) 9: 649.

16 ♂♂, 1 ♀, Ghora Tobela (ca. 3000 m) – Kyangjin Gompa (ca. 3800 m), Langtang Valley, Bagmati Zone, Sept. 23–24, 1975. 2 ♂♂, Syn Gompa, near Gosainkund, Bagmati Zone, alt. 3300–3500 m, October 2, 1975.

This species was originally described from Nepal and has not been recorded since that time. Here is made a second record of it.

This species is an alpine cicada, inhabiting sunny alpine meadows (Fig. 4). The specimens were collected together with *Parnassius hardwickei* Gray, *Colias electo*

Linné, and other alpine insects. They were on grass and the males were calling, but it was not easy to find them. When disturbed, they tended to drop down rather than to fly away.

A LIST OF NEPALESE CICADIDAE

1. *Polyneura ducalis* Westwood, 1840
2. *Pycna repanda* (Linné, 1758)
3. *Suissha himalayana* Naruse, n. sp.
4. *Terpnosia andersoni* Distant, 1892
5. *Terpnosia clio* (Walker, 1850)
6. *Terpnosia ganesa* Distant, 1904
7. *Euterpnosia crowfooti* (Distant, 1912)
8. *Leptopsaltria tuberosa* (Signoret, 1847)
9. *Rustia dentivitta* (Walker, 1862)
10. *Neotanna thalia* (Walker, 1850)
11. *Oncotympana expansa* (Walker, 1858)
12. *Mata kama* (Distant, 1881)
13. *Tosena mearesiana* (Westwood, 1842)
14. *Tosena melanopteryx* Kirkaldy, 1909
15. *Tosena melanopteryx* var. *albata* Distant, 1878
16. *Haphsa nicomache* (Walker, 1850)
17. *Gaeana sulphurea* (Westwood, 1839)
18. *Platylomia brevis* Distant, 1912
19. *Platylomia saturata* (Walker, 1858)
20. *Pomponia imperatoria* (Westwood, 1842)
21. *Pomponia linearis* (Walker, 1850)
22. *Mogannia conica* (Germar, 1830)
23. *Mogannia effecta* Distant, 1892
24. *Graptotettix guttatus* Stål, 1866
25. *Scieroptera splendidula* (Fabricius, 1775)
26. *Bijaurana typica* Distant, 1912
27. *Lemuriana apicalis* (Germar, 1830)
28. *Cicadetta zenobia* (Distant, 1912)